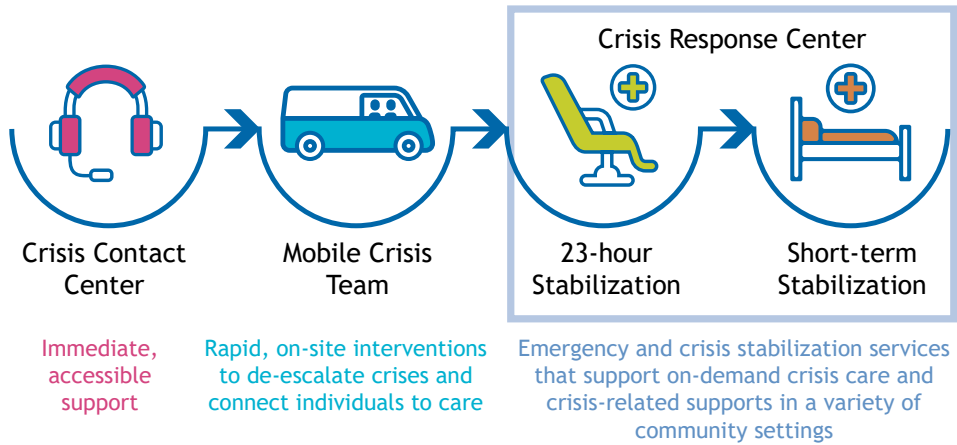


### What is the Crisis Now Framework?

Someone to Contact, Someone to Respond, and a Safe Place for Help



SAMSHA's [National Guidelines for a Behavioral Health Coordinated System of Crisis Care 2025](#), establishes overarching principles for behavioral health crisis systems, clarifies and expands upon essential elements of the crisis continuum and provides guidance on the coordination of the essential elements to create a true system of care. The National Guidelines provide flexibility to ensure crisis services meet unique community or regional needs and structure to establish a shared language and system framework.

### Why is Crisis Now needed in Alaska?

A well-coordinated behavioral health crisis continuum of care keeps individuals in their communities in the least restrictive environment.

- 2x** People with a behavioral health diagnosis are 2x as likely to have a 12+ hour stay and more than 2x likely to stay more than 24 hours in the Emergency Department compared to those without a behavioral health diagnosis.<sup>1</sup>
- \$\$** Alcohol misuse costs the state over \$3.4 billion in 2018 in productivity, traffic collisions, health care, social services and criminal justice services.<sup>2</sup>
- Fragmented care coordination** for youth and adults.<sup>3,4</sup>
- High rates of individuals with behavioral health conditions incarcerated or engaged in the criminal justice system.**<sup>5</sup>
- Inability to access timely and appropriate behavioral health stabilization and treatment services.**<sup>6</sup>
- Cycling through corrections, courts, psychiatric hospitalization, and emergency services.**<sup>7</sup>

<sup>1</sup>ASHNAA Acute BH Improvement Project, 2019; <sup>2</sup>Summary of the Economic Costs of Substance Use Disorders in Alaska: 2019 Update; <sup>3</sup>ASHNAA Acute Behavioral Health Improvement Project, 2019; <sup>4</sup>AHHA Child and Adolescent Behavioral Healthcare Improvement Project, 2022; <sup>5</sup>Trust Beneficiaries in Alaska's Department of Corrections, 2014; <sup>6</sup>HB 172 Psychiatric Patient Rights in Alaska, 2023; <sup>7</sup>Forensic Psychiatric Hospital Feasibility Study, 2019

Since 2018, the Alaska Mental Health Trust Authority and partners statewide have worked to implement the Crisis Now framework in Alaska. Organizations and communities across the state are working to adapt the essential elements to create systems of care that meet local needs.

The Crisis Now framework is more than creating individual services. It is about creating integrated, coordinated systems of care- from first contact to follow up.



### Someone to Contact

**988:** Established July 2022  
*Careline Crisis Services, Inc. began providing statewide, toll-free crisis line services in 2004*



### Someone to Respond

**Mobile Crisis:**  
 Anchorage: established 2021  
 Mat-Su: established 2023  
 Fairbanks: established 2021  
 Central Kenai: established 2025

**Mobile Integrated Health:**  
 Juneau: established 2020  
 Ketchikan: established 2024



### A Safe Place for Help

**Anchorage:**  
 Anticipated launch 2026

**Fairbanks:**  
 Anticipated launch late 2026

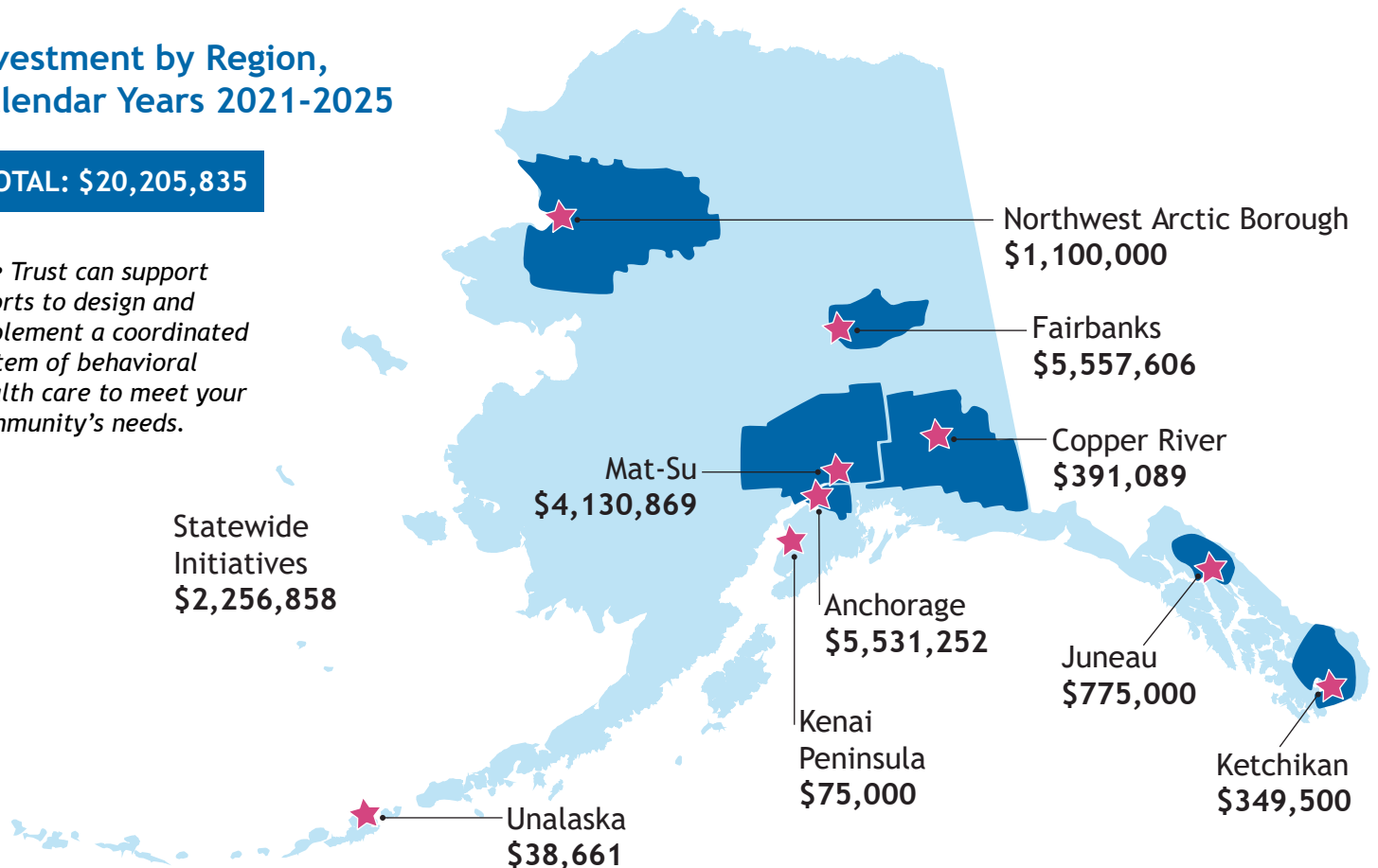
**Kotzebue:**  
 Anticipated launch 2027

**Unalaska:**  
 Planning - TBD

## Investment by Region, Calendar Years 2021-2025

**TOTAL: \$20,205,835**

*The Trust can support efforts to design and implement a coordinated system of behavioral health care to meet your community's needs.*



To learn more, visit the [Trust's website](#) or contact Eric Boyer at [eric.boyer@alaska.gov](mailto:eric.boyer@alaska.gov).

April 2026