

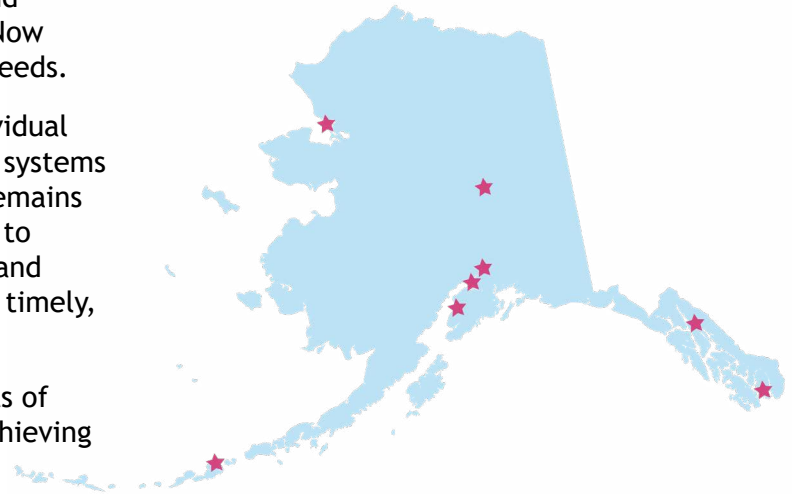
CRISIS NOW

ANNUAL IMPLEMENTATION REPORT 2025

Since 2018, the Trust has invested in organizations and communities statewide to adapt the essential Crisis Now elements to create systems of care that meet local needs.

The Crisis Now framework is more than creating individual services. It is about creating integrated, coordinated systems of care – from first contact to follow up. The Trust remains committed to investing in programs and partnerships to better meet Beneficiary needs by transforming local and statewide behavioral health care systems to be more timely, direct and compassionate.

This Annual Implementation Report includes highlights of efforts and outcomes during 2025 to work towards achieving this vision.



~\$25,000,000

Alaska Mental Health Trust Authority investments in the Crisis Now framework since 2018. Trust investments include foundational projects not captured in the component-level investments below.

Total Investments Since 2020, by Crisis Now Component





| | | | | |
|--|--|---|--|---------------------------------------|
| \$468,519 Someone to Contact | \$8,765,761 Someone to Respond | \$7,608,813 A Safe Place for Help | \$2,389,303 Community Coordination | \$1,274,339 System Support* |
|--|--|---|--|---------------------------------------|

*Includes funding for the Department of Family and Community Services Complex Care Coordinator and DES/DET Coordinator positions.

2025 Trust Investments in Behavioral Health Crisis Care

| Someone to Respond | A Safe Place for Help | Community Coordination |
|---|--|--|
| \$1,193,275 True North Recovery Mobile Crisis Team operations, <i>Mat-Su</i> | \$900,000 Maniilaq Association EmPATH unit, <i>Kotzebue</i> | \$38,003 Community Coordinator, <i>Mat-Su</i> |
| \$950,000 Alaska Behavioral Health Mobile Crisis Team operations, <i>Fairbanks</i> | \$2,955,983 Southcentral Foundation Peer Support Staff, <i>Anchorage</i> | \$138,000 Community Coordinator, <i>Fairbanks</i> |
| \$28,000 Capitol City Fire and Rescue Strategic Planning, <i>Juneau</i> | \$38,661 Iliuliuk Family & Health Services Crisis Stabilization Technical Assistance, <i>Unalaska</i> | \$135,000 Community Coordinator, <i>Ketchikan</i> |
| | \$366,745 Alaska Behavioral Health Below Fair Market Value Rent, <i>Fairbanks</i> | |
| | \$34,900 True North Recovery Feasibility Study, <i>Anchorage</i> | |

2025 Data & Outcomes

| Community | Someone to Contact  | | Someone to Respond  | | A Safe Place for Help   |
|--------------------------------|--|--|--|--|---|
| | <i>Calls Answered by Alaska Careline*</i> | <i>% of Calls Resolved with Contact Center</i> | <i>Mobile Responses**</i> | <i>% Resolved in Community (Average)</i> | |
| Anchorage | 11,147 | 99% | 8,532+^ | 90% | Southcentral Foundation anticipates opening crisis stabilization services in early summer 2026; Providence anticipates launching services in late 2026. |
| Fairbanks | 3,472 | 99% | 1,319^ | 98% | Alaska Behavioral Health continues to explore crisis stabilization. |
| Juneau | 2,625 | 99% | 333^ (MCT) 1,960- (MIH) | 62% [^] n/a- | A community work group continues efforts to explore crisis stabilization needs and opportunities. |
| Central Kenai Peninsula | 2,720 | 99% | 35 [^] <i>Data is from December 2025 through January 21, 2026.</i> | 80% | |
| Ketchikan | 271 | 99% | 1,000- | n/a | |
| Kotzebue | 18 | 100% | n/a | n/a | Maniilaq Association continues planning to develop an EmPATH unit adjacent to the emergency department. |
| Mat-Su | 2,753 | 99% | 476 [^] | | My House saw 133 unique clients; Mat-Su Regional Medical Center Behavioral Health Unit had 414 admissions. |
| Unalaska | 12 | 95% | n/a | n/a | Iliuliuk Family & Health Services, the City of Unalaska, and the Aleutian Pribilof Island Association completed collaborative work exploring a shared vision for potential crisis stabilization services. |
| Statewide | 47,826 | 99% | 13,655 | 82% | |

Data Notes:

* Callers can choose whether to share their location. The volume of calls from specific communities may be underrepresented.

** Includes in-person and telephonic responses.

+ Includes Anchorage Fire Department Mobile Crisis Team (MCT), Anchorage Police Department Mobile Intervention Team (MIT), and VOA Rapid Response Team.

[^] Denotes MCT data.

- Denotes Mobile Integrated Health (MIH) data.

| Highlights | | | | | | |
|---|--|---|--|--|---|--|
| Anchorage Anchorage Crisis Collaborative members refined data collection processes and definitions to continue alignment and mutual understanding of the crisis system. | Fairbanks Alaska Behavioral Health (AKBH) and Alaska State Troopers Detachment D signed agreements for AKBH MCT to provide support on Trooper calls outside of Fairbanks North Star Borough. | Juneau Polaris House received the Innovative Program Award at the Alaska Behavioral Health Association’s 2025 Fall Members’ and Affiliates’ Conference. | Central Kenai Peninsula Central Peninsula Hospital MCT launched in December. | Ketchikan The MIH program was named Alaska’s 2025 “Community Star” by the National Organization of State Offices of Rural Health and received the 2025 Alaska Hospital and Healthcare Association Annual Champion Award. | Kotzebue Maniilaq Association continues participation in SAMSHA-funded project to increase connectivity between 988 and Tribal communities. | Mat-Su 13 Mat-Su organizations signed a shared MOU to collaborate and coordinate for a unified behavioral health system. |

We can currently measure program outcomes about the volume of services provided and qualitative stories of impact from partners and Trust Beneficiaries. This is just a snapshot of how these services impact lives and systems across the state. The Trust is exploring the development of a comprehensive evaluation of Crisis Now investments, including how to leverage data from other sources, for a more holistic, in-depth understanding of the impact of crisis services across the state.

2025 Behavioral Health Crisis System Highlights

Alaska Department of Health

The Alaska Department of Health finalized subacute mental health facility licensing regulations, which are the culmination of a multi-year effort to develop and implement a regulatory framework supportive of crisis services accessible to all individuals outside of hospital settings. [Licensing regulations for subacute mental health facilities went into effect on January 8, 2026.](#)

Division of Behavioral Health

The Division of Behavioral Health (DBH) began a two-part effort to evaluate Medicaid payment rates within a possible continuum of behavioral health crisis services. In September 2025, Milliman released the report [Potential Enhancements to Alaska's Behavioral Health Crisis Continuum](#) and Guidehouse released public recommendations in their report [Alaska Rate Evaluations – Community Behavioral Health Services](#). Guidehouse continues work with the DBH to identify rates and fiscal impacts of the service array proposed by Milliman.

DBH published an RFP for the [Crisis Contact Center operator contract](#); contract award is anticipated for later this spring.

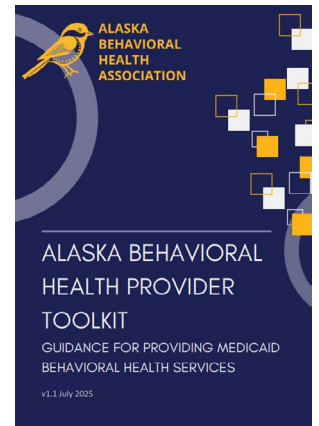
The DBH, Section of Prevention and Early Intervention in partnership with the Division of Public Health, Section of Epidemiology, with help from the Statewide Suicide Prevention Council developed the *Alaska Suicide Risk Surveillance* listserv. The *Alaska Suicide Risk Surveillance* team has created a protocol to identify suicide attempt clusters in Alaska using hospital emergency department data. When a cluster is identified, the *Alaska Suicide Risk Surveillance* channel will send a notification to subscribers via email and SMS (optional). [You can sign up to receive Alaska Suicide Risk Surveillance emails \(or SMS\) here.](#)

Department of Family and Community Services

The Department of Family and Community Services (DFCS) awarded six Crisis Services Institutional Readiness Grants, supporting community-based organizations to develop or provide place-based crisis stabilization services. Awards went to organizations in Anchorage, Fairbanks, Ketchikan, Kotzebue, Mat-Su, and Unalaska. Grant funds were flexible, intended to support programs with funding needs including, but not limited to, staff training, facility improvements, or program furniture.

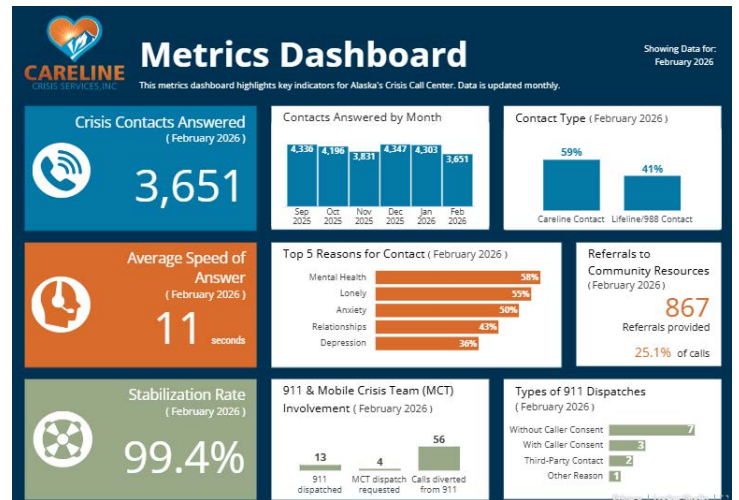
The Alaska Behavioral Health Association

ABHA released their [Behavioral Health Provider Enrollment Toolkit](#). This toolkit is intended as a resource for providers delivering Medicaid behavioral health services, and includes content on Medicaid regulation, billing, definitions and other resources. The toolkit is accessible without an ABHA membership.



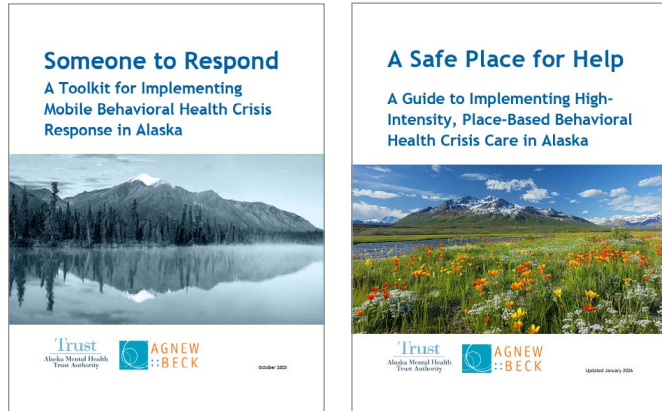
Careline

Alaska's Crisis Contact Center, operated by Careline, [published a data dashboard](#) and updates the data monthly.



The Trust

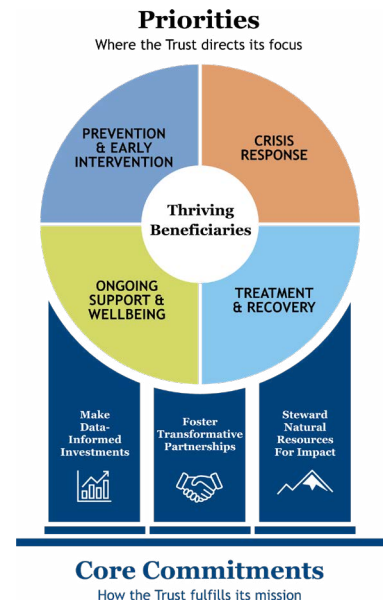
The Trust published [Someone to Respond: A Toolkit for Implementing Mobile Behavioral Health Crisis Response in Alaska](#) and completed [A Safe Place for Help: A Guide to Implementing High-Intensity, Place-Based Behavioral Health Crisis Care in Alaska](#).



The Trust also finalized updating key performance indicators (KPIs) for Mobile Crisis Team grantees and continues work to finalize potential KPIs for crisis stabilization programs.

The Trust's Strategic Plan for a Thriving Alaska

The Trust adopted a new [Strategic Framework](#) in December 2025. This plan affirms continued, shared commitment to advance efforts to improve the lives of Trust beneficiaries, while prudently managing the assets that make our work possible for generations to come. The Framework connects the Trust's financial and land assets with our core mission, ensuring both are managed for lasting, positive change across Alaska. Going forward, the Trust will put this plan into action, connecting its strategic intent to work across the plan's four priorities. Paired with the core commitments, the Trust will frame systems-change efforts and grant investments to align with its strategic priorities and continue progress in improving beneficiary outcomes.



2026 Priorities & System Needs

- Implementation of projects statewide through The Centers for Medicaid and Medicare Services [annual award of over \\$272 million dollars to the State of Alaska](#) as part of the Rural Health Transformation Program.
- Updating the Trust's Behavioral Health Crisis Response web pages to improve ease of navigation and resource sharing.
- Distribution of the Trust's resource: *A Safe Place for Help: A Guide to Implementing High-Intensity, Place-Based Behavioral Health Crisis Care in Alaska*.
- Consider and support braided funding mechanisms for mobile response services.
- Develop plans for long-term behavioral health crisis data sources and roles and responsibilities for analysis at the state and regional level.
- Investigate available resources and strategies to resolve challenges with reimbursement for behavioral health patient transportation and private payer engagement with mobile response and crisis stabilization services.
- Create clear pathways for behavioral health crisis workforce training, certification and supervision.