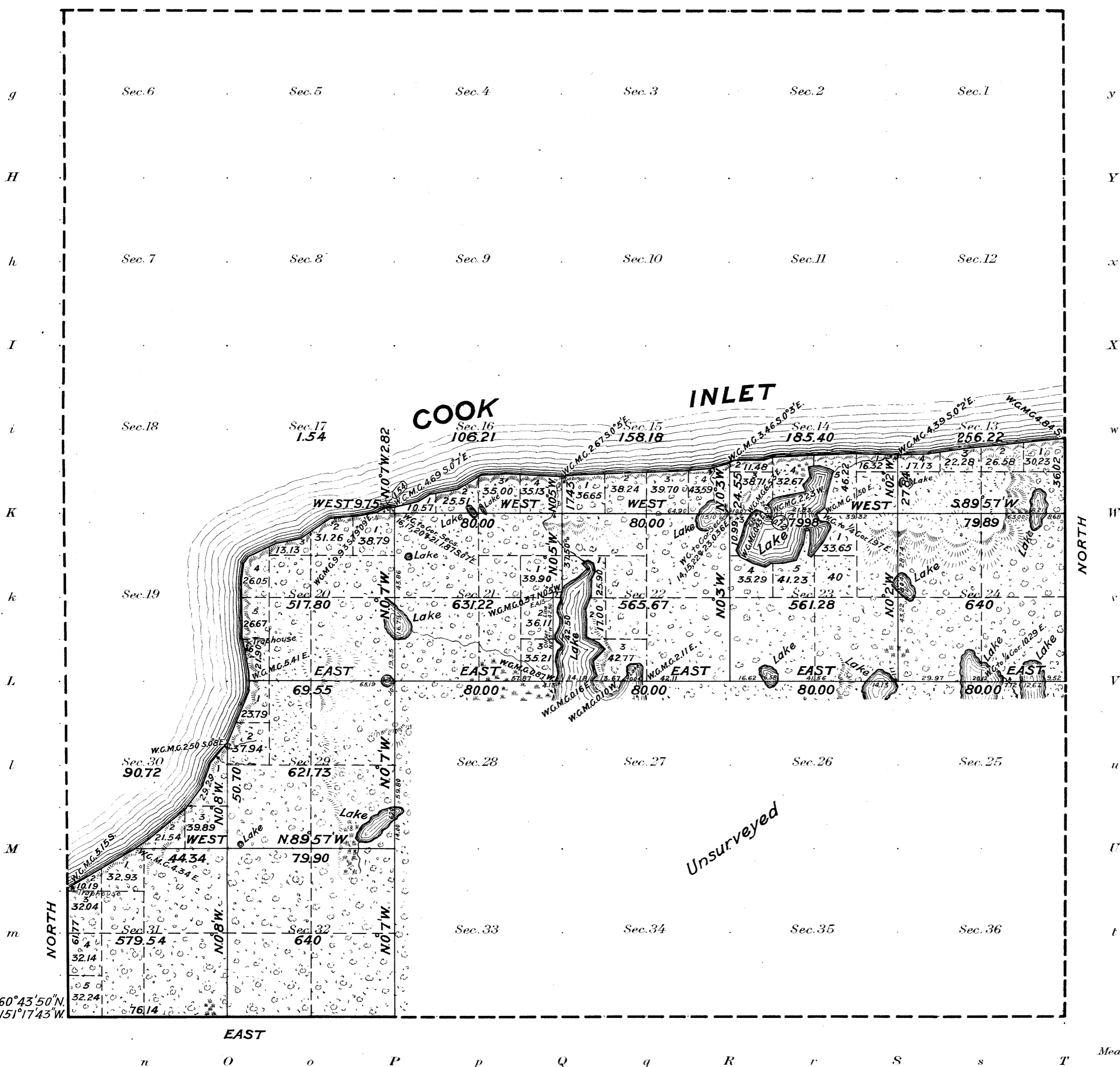


# Township No. 8 North Range No. 11 West of the Seward Meridian, Alaska

G f F e E d D c C b B a A



Areas in Acres	
Public Land	5,355.51
Indian Reservation	
Indian Allotments	
Mineral Claims	
Water Surface	196.27
<b>Total Area</b>	<b>5,751.78</b>

Lat. 60°43'50"N  
Long. 151°17'45"W

Scale 40 Chains to an inch  
Mean Magnetic Declination

Surveys Designated	By Whom Surveyed	Group		Amount of Surveys		When Surveyed		
		No.	Date of instructions	Mls.	chs.	lks.	Begun	Completed
South Bdy.	Fred Dahquist USGE	28	June 29, 1922	1	76	14	Aug. 14, 1922	Aug. 16, 1922
East "	" " "	"	" " "	1	36	02	Sept. 4, "	Sept. 6, "
West "	" " "	"	" " "	0	61	77	Aug. 11, "	Aug. 11, "
Subdivisions	" " "	"	" " "	19	06	78	" 12, "	Sept. 5, "
Meanders	" " "	"	" " "	11	66	38	" " "	" 8, "

The above map of Township No. 8 North Range No. 11 West of the Seward Meridian Alaska is strictly conformable to the field notes of the survey thereof on file in this office, which have been examined and approved

U.S. Surveyor General's Office.  
Juneau, Alaska June 26, 1923

*Carl Smith*  
Surveyor General.