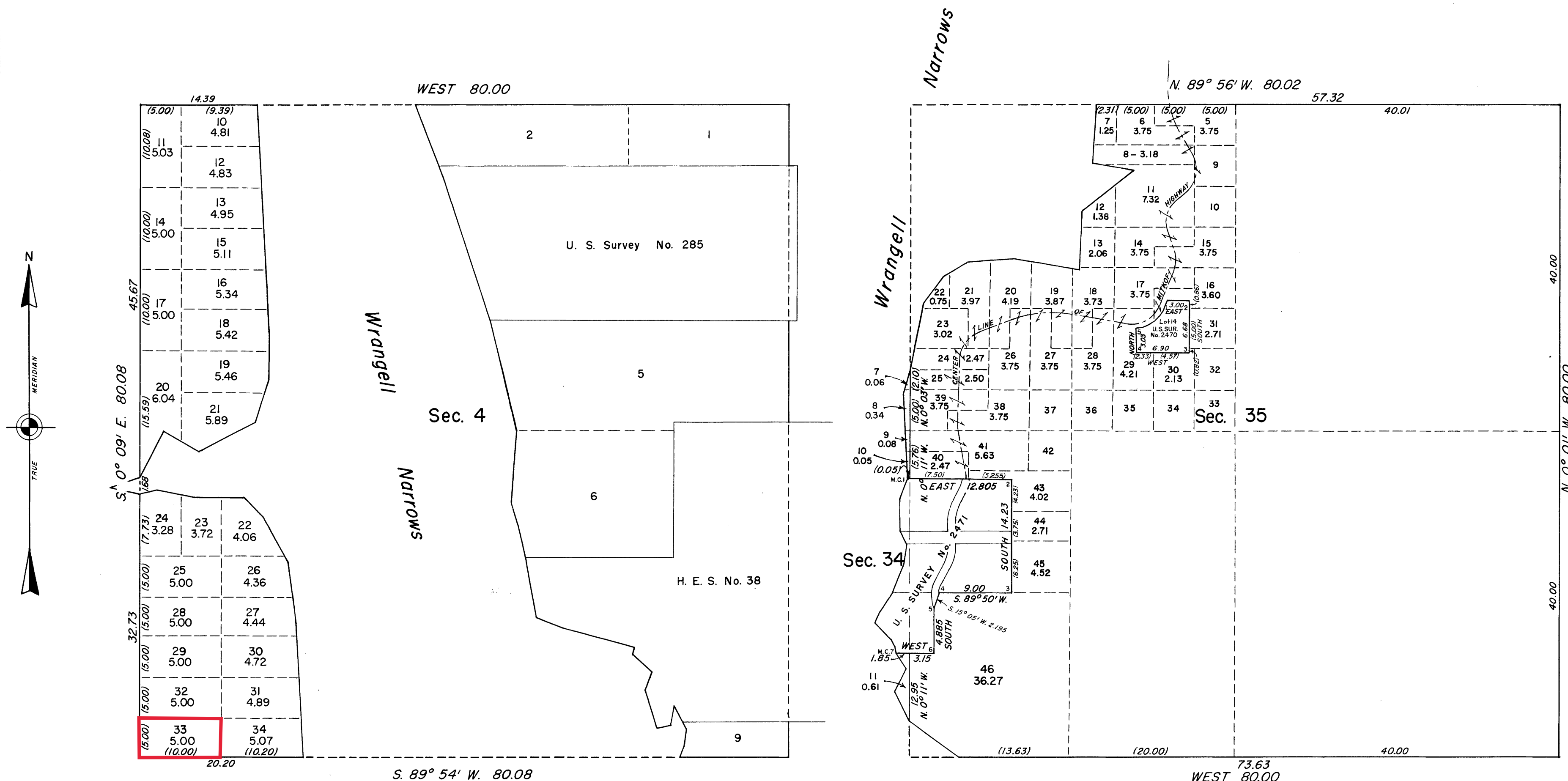


TOWNSHIP 59 SOUTH, RANGE 79 EAST, OF THE COPPER RIVER MERIDIAN, ALASKA
 SUPPLEMENTAL PLAT OF SECTION 35, WEST PORTION OF SECTION 4, AND EAST PORTION OF SECTION 34



This supplemental plat showing a segregation of U. S. Surveys Nos. 2470 and 2471 and a subdivision of original lots 3, 4, 7 and 8 of Section 4, original lots 3 and 4 of Section 34 and original lots 1 to 4 inclusive and NW $\frac{1}{4}$ SW $\frac{1}{4}$ of Section 35, Township 59 South, Range 79 East, Copper River Meridian, is based upon the plat accepted October 28, 1929 and the U. S. Survey records. The center line Mitkof Highway in Section 35, as shown hereon, for topography only, is based upon records of the Bureau of Public Roads.

All lots in Section 35 with no areas shown each contain 2 $\frac{1}{2}$ acres.

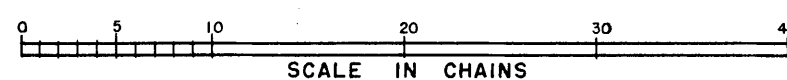
UNITED STATES DEPARTMENT OF THE INTERIOR
 BUREAU OF LAND MANAGEMENT
 Washington, D. C. June 15, 1954

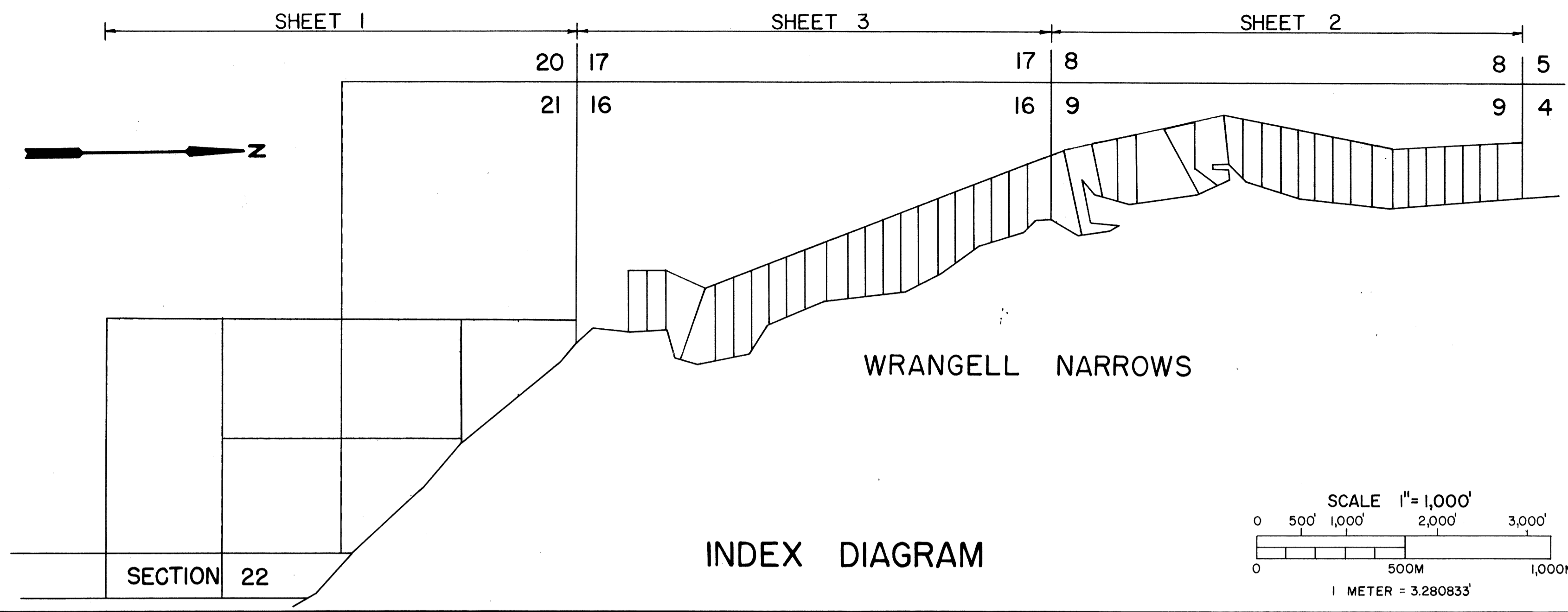
This plat showing amended lottings, having been correctly prepared in accordance with the regulations, is hereby accepted.

For the Director

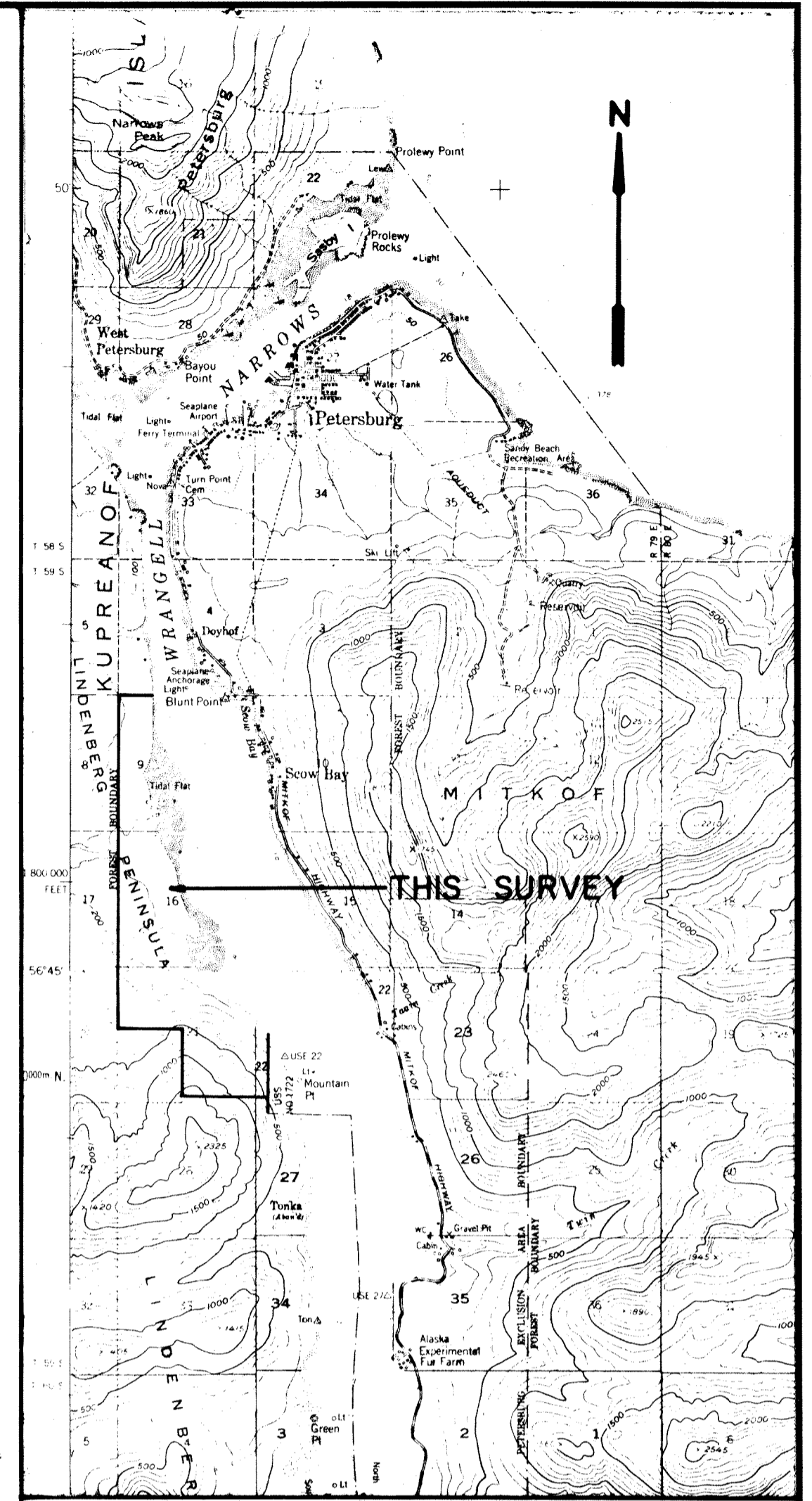
Donald B. Clement

Assistant Chief, Division of
 Cadastral Engineering





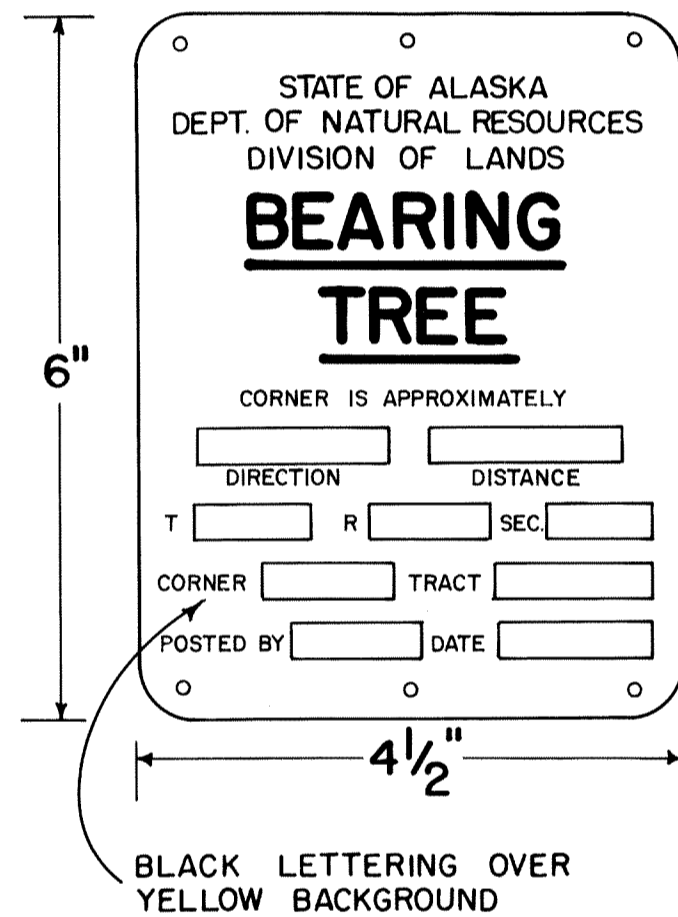
- MONUMENT LEGEND**
- ⊗ G.L.O. MONUMENT RECOVERED THIS SURVEY
 - ⊗ B.L.M. OR G.L.O. MONUMENT NOT RECOVERED
 - ⊙ PRIMARY MONUMENT SET THIS SURVEY
 - SECONDARY MONUMENT SET THIS SURVEY
 - EAGLE TREE



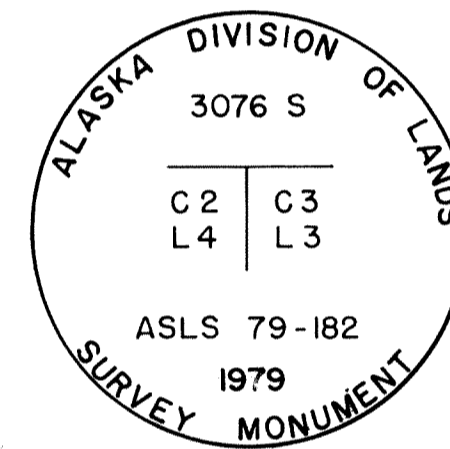
GENERAL NOTES

1. This survey was executed under the terms of contract number G.S.C. 183.
2. Bearings and distances shown hereon are true mean bearings and true distances. Bearings and distances shown within Sections 21 and 22 are record BLM or GLO data or computed from such record information as the case may be.
3. Primary monuments used this survey are Berntsen Federal Aluminum Monuments, Model A-1. Secondary monuments used are 5/8" x 3" re-bar with yellow plastic caps.
4. The U.T.M. and metric data is being shown hereon for information purposes only.
5. All lands encompassed by this survey are subject to a 50 foot wide easement along the mean high water or ordinary high water line of any water frontage of any sort.
6. All section lines are subject to a 50 foot easement each side of the section line, which is reserved to the State of Alaska for public highways under A. S. 19.10.010.
7. All easements shown are for public access.
8. The meanders shown hereon are for area computation purposes only and the true meanders of mean high water form the boundaries of the lots.
9. Bearing tree tags for primary monuments are as shown at right. Bearing tree tags for secondary monuments are unpainted 3" x 5" aluminum tags.
11. A section line easement vacation plat has been filed affecting certain lots within this subdivision.

TYPICAL BEARING TREE TAG



TYPICAL MONUMENT MARKING



SUMMARY OF AREAS

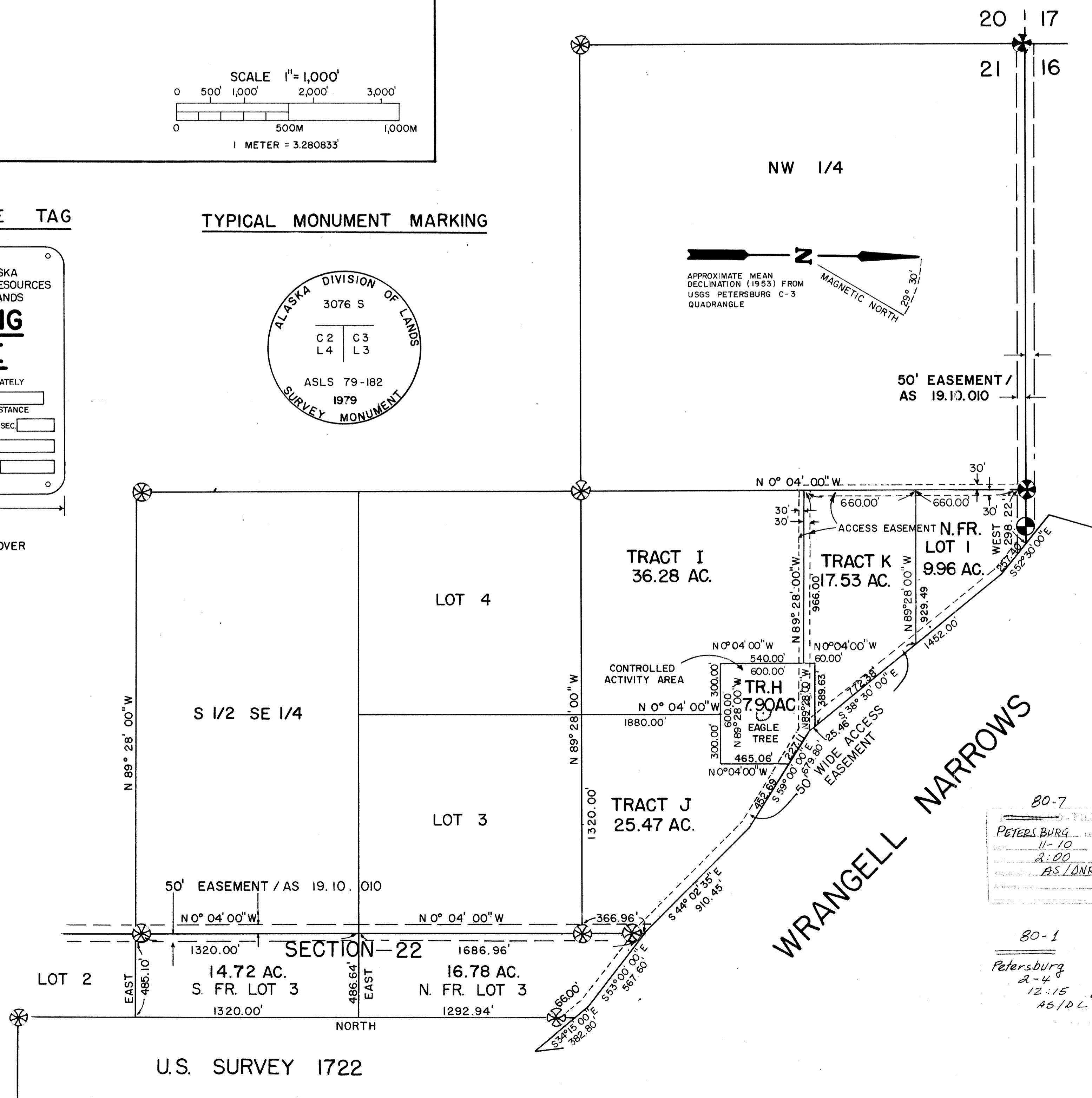
	Acres	Hectares
Lots 1 through 41	146.37	59.24
Tracts A through K	410.02	165.94
Section 21, Fr. Lot 1	9.96	4.03
Section 22, Lot 3	31.50	12.75
	597.85	241.96

SELECTION INFORMATION

Sections 9, 21 & 22:
 Mental Health - 84
 Tentative Approval dated 10/8/63
 Patent No. 1234437 dated 12/20/63
 Section 16:
 School - 133
 State Grant - 7/7/58
 Patent No. 1232161 dated 6/6/63

A.S.L.S. 79-182

WITHIN SEC. 9, LOTS 2, 3, 4, & 5; SEC. 16, W 1/2 W 1/2, LOTS 1, 2, 3, & 4; SEC. 21, LOTS 1 & 2; SEC. 22, LOT 3
 T.59S. R.79E. C.R.M. ALASKA
 CONTAINING 557.23 ACRES (225.51 HECTARES)

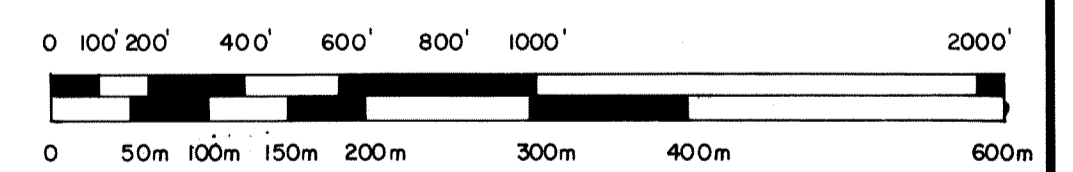


VICINITY MAP

SCALE 1" = 1 MILE

TAKEN FROM U.S.G.S. MAPS, PETERSBURG C-3 & D-3 (1953)

AMENDED PLAT



1 Meter = 3.280833 U.S. Survey Ft.
 1 Acre = 0.4047 Hectares

STATE OF ALASKA
 DEPARTMENT OF NATURAL RESOURCES
 DIVISION OF TECHNICAL SERVICES
 ANCHORAGE, ALASKA

ALASKA STATE LAND SURVEY NO. 79-182
 WITHIN TOWNSHIP 59 SOUTH, RANGE 79 EAST, C.R.M.
 SEC. 9, LOTS 2, 3, 4 & 5; SEC. 16, W1/2W1/2, LOTS 1, 2, 3 & 4; SEC. 21, LOTS 1 & 2; SEC. 22, LOT 3

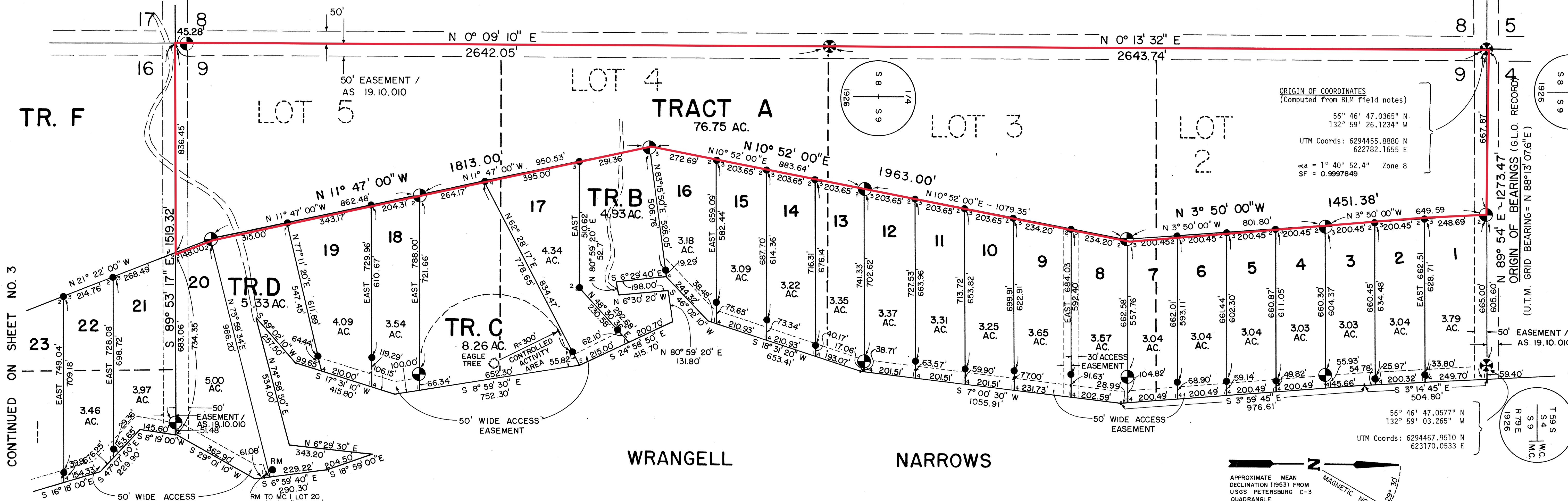
DRAWN BY: C.J.L.
 DATE: 11-79
 SCALE: 1" = 400'
 APPROVAL RECOMMENDED: [Signature]
 Chief Cadastral Surveyor
 DATE: 1/27/80
 CHECKED: 3
 FILE NO. 79-182

PLAT # 81-1
 RECORDED - FILED NC
 PETERSBURG REC. DIST.
 DATE: 3/19 19 81
 TIME: 11:57 P.M.
 Requested by: STATE OF ALASKA
 Dept. of Natural Resources
 103 W. Northern Ave., 2nd Fl.
 Anchorage, AK 99503

80-7
 PETERSBURG REC. DIST.
 DATE: 11-10 19 80
 TIME: 2:00 P.M.
 Requested by: AS/DNR

80-1
 Petersburg
 2-4 80
 12:15 P
 AS/DL

CONTINUED ON SHEET NO. 3



BEARING TREES FOR CORNERS SET THIS SURVEY

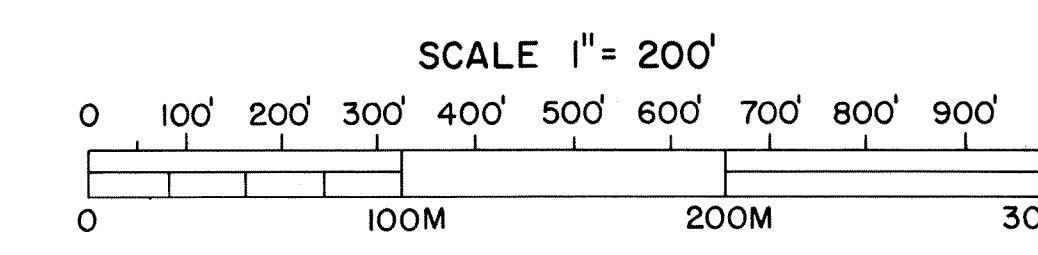
WCMC4 L1 and WCMC1 L2	S 46° 27' W, 5.06' to 6" spruce
WCMC4 L2 and WCMC1 L3	S 62° 43' W, 9.54' to 5" spruce
WCMC4 L3 and WCMC1 L4	S 1° 06' E, 14.35' to 12" hemlock S 68° 07' W, 27.15' to 24" hemlock N 8° 46' W, 13.07' to 8" hemlock
WCMC4 L4 and WCMC1 L5	S 89° 12' W, 17.90' to 12" spruce
WCMC4 L5 and WCMC1 L6	N 63° 41' W, 3.60' to 5" spruce
WCMC4 L6 and WCMC1 L7	N 75° 16' W, 12.73' to 6" hemlock
WCMC4 L7 and WCMC1 L8	S 15° 45' E, 5.20' to 24" spruce S 85° 08' W, 14.48' to 7" hemlock N 18° 25' W, 6.18' to 20" spruce
WCMC4 L8 and WCMC1 L9	N 78° 17' W, 22.25' to 14" hemlock
WCMC4 L9 and WCMC1 L10	N 88° 54' W, 6.36' to 28" spruce
WCMC4 L10 and WCMC1 L11	S 84° 43' W, 17.94' to 12" spruce
WCMC4 L11 and WCMC1 L12	S 70° 49' W, 11.94' to 6" hemlock
WCMC4 L12 and WCMC1 L13	S 24° 57' W, 19.30' to 42" hemlock S 50° 42' W, 21.37' to 48" hemlock N 30° 21' W, 24.10' to 10" spruce
WCMC4 L13 and WCMC1 L14	S 81° 12' W, 8.05' to 36" spruce
WCMC4 L14 and WCMC1 L15	N 89° 17' W, 30.44' to 48" spruce
WCMC4 L15 and WCMC1 L16	S 86° 09' W, 18.83' to 18" spruce
WCMC4 L16	S 83° 21' E, 3.02' to 9" hemlock
WCMC1 L17	S 35° 32' E, 8.21' to 6" hemlock
C2 L17	N 41° 20' E, 4.59' to 30" hemlock
WCMC5 L17	N 66° 15' E, 3.09' to 4" spruce
WCMC1 L18	N 49° 57' E, 14.71' to 9" alder S 26° 20' E, 13.90' to 10" spruce West, 6.20' to 4" hemlock
WCMC4 L18 and WCMC1 L19	S 70° 22' E, 8.21' to 10" spruce
WCMC4 L19	N 88° 26' E, 12.61' to 6" hemlock
RMCM1 L20	S 67° 00' W, 5.41' to 20" hemlock

WCMC4 L20 and WCMC1 L21	N 18° 37' W, 14.01' to 20" hemlock N 48° 37' E, 28.71' to 10" alder N 70° 07' E, 25.20' to 14" spruce
WCMC4 L21 and WCMC1 L22	N 49° 48' W, 15.48' to 9" spruce
WCMC4 L22 and WCMC1 L23	West, 29.81' to 22" spruce
WCMC4 L23 and WCMC1 L24	N 59° 44' W, 5.94' to 18" spruce
WCMC4 L24 and WCMC1 L25	S 82° 36' W, 19.18' to 8" hemlock
WCMC4 L25 and WCMC1 L26	S 76° 41' E, 5.21' to 18" hemlock S 45° 45' W, 14.49' to 15" hemlock N 33° 40' W, 13.40' to 8" hemlock
WCMC4 L26 and WCMC1 L27	S 17° 48' W, 7.05' to 5" hemlock
WCMC4 L27 and WCMC1 L28	N 41° 28' W, 11.95' to 36" hemlock
WCMC4 L28 and WCMC1 L29	S 67° 48' W, 7.06' to 16" spruce
WCMC4 L29 and WCMC1 L30	West, 10.60' to 10" hemlock
WCMC4 L30 and WCMC1 L31	S 51° 41' W, 4.98' to 12" spruce
WCMC4 L31 and WCMC1 L32	S 18° 16' E, 15.71' to 16" spruce S 46° 48' W, 33.98' to 48" spruce N 12° 00' E, 28.90' to 48" spruce
WCMC4 L32 and WCMC1 L33	West, 4.83' to 16" spruce
WCMC4 L33 and WCMC1 L34	N 85° 31' W, 4.17' to 10" spruce
WCMC4 L34 and WCMC1 L35	S 75° 08' W, 6.89' to 12" hemlock
WCMC4 L35 and WCMC1 L36	S 52° W, 17.06' to 16" hemlock N 81° 06' W, 23.31' to 12" hemlock N 4° 19' W, 17.30' to 30" hemlock
WCMC4 L36 and WCMC1 L37	N 65° 53' W, 7.71' to 12" hemlock
WCMC4 L37 and WCMC1 L38	S 86° 29' W, 15.10' to 12" spruce
RMCM4 L38 and RMCM1 L39	N 86° 23' W, 14.71' to 16" spruce
WCMC4 L39	S 41° 07' E, 10.00' to 30" hemlock S 18° 50' W, 31.00' to 10" spruce N 17° 11' W, 29.80' to 24" spruce
WCMC1 L40	West, 2.49' to 10" spruce
WCMC4 L40 and WCMC1 L41	N 87° 50' W, 37.95' to 24" hemlock

WCMC4 L41	S 33° 33' W, 22.44' to 18" spruce N 85° 55' W, 2.94' to 10" crab apple N 63° 56' W, 14.82' to 18" hemlock
WCMC Sec 16-21	S 49° 08' E, 19.35' to 18" spruce S 6° 01' E, 16.39' to 15" hemlock N 3° 51' E, 11.71' to 12" spruce
C2 L1	S 3° 58' W, 18.65' to 12" hemlock S 72° 17' W, 8.61' to 16" spruce N 55° 17' E, 21.65' to 12" hemlock
C3 L1 and C2 L2	S 52° 45' E, 17.96' to 12" hemlock
C3 L2 and C2 L3	N 21° 39' E, 6.47' to 6" hemlock
C3 L3 and C2 L4	S 36° 00' W, 51.72' to 4" jack pine N 6° 50' W, 20.09' to 4" jack pine N 65° 23' E, 18.51' to 3" jack pine
C3 L4 and C2 L5	S 85° 30' E, 35.17' to 8" jack pine
C3 L5 and C2 L6	S 79° 44' E, 13.41' to 6" jack pine
C3 L6 and C2 L7	S 72° 15' E, 3.98' to 8" cedar
C3 L7 and C2 L8	S 8° 56' E, 19.70' to 7" jack pine N 9° 55' W, 24.97' to 16" jack pine N 45° 02' E, 18.10' to 10" jack pine
C3 L8 and C2 L9	S 1° 39' W, 13.95' to 8" jack pine
C3 L9 and C2 L10	N 34° 53' W, 3.02' to 8" cedar
C3 L10 and C2 L11	S 88° 42' E, 11.94' to 5" jack pine
C3 L11 and C2 L12	S 75° 57' E, 13.00' to 6" jack pine
C3 L12 and C2 L13	S 74° 40' E, 59.73' to 8" jack pine S 52° 11' E, 67.73' to 8" jack pine S 22° 36' E, 68.15' to 7" jack pine
C3 L13 and C2 L14	S 88° 50' E, 11.70' to 6" jack pine
C3 L14 and C2 L15	S 45° 48' E, 14.39' to 5" hemlock
C3 L15 and C2 L16	S 49° 34' E, 16.44' to 14" jack pine
C3 L16	S 46° 24' W, 26.91' to 18" cedar N 77° 59' W, 5.61' to 7" hemlock N 38° 29' E, 11.80' to 5" cedar
C3 L17	N 69° 57' E, 26.72' to 10" jack pine

C4 L17	N 79° 17' E, 35.52' to 2" jack pine
C2 L18	N 72° 21' E, 44.65' to 8" jack pine S 65° 43' E, 64.20' to 8" jack pine S 25° 22' E, 36.60' to 10" jack pine
C3 L18 and C2 L19	N 17° 23' E, 34.71' to 6" jack pine
C3 L19	S 80° 27' E, 8.01' to 14" spruce
C2 L20	N 27° 49' E, 13.99' to 10" cedar S 2° 40' W, 10.45' to 12" hemlock S 86° 02' W, 15.94' to 9" hemlock
C3 L20 and C2 L21	N 67° 47' W, 5.49' to 12" jack pine
C3 L21 and C2 L22	S 87° 48' E, 16.88' to 10" hemlock
C3 L22 and C2 L23	S 82° 04' W, 4.43' to 6" jack pine
C3 L23 and C2 L24	S 67° 39' E, 8.13' to 6" jack pine
C3 L24 and C2 L25	N 38° 54' E, 10.71' to 12" jack pine
C3 L25 and C2 L26	N 7° 27' W, 12.53' to 6" hemlock S 10° 52' W, 35.74' to 8" hemlock S 45° 45' W, 19.40' to 10" hemlock
C3 L26 and C2 L27	S 35° 13' E, 15.24' to 8" jack pine
C3 L27 and C2 L28	S 37° 43' E, 4.95' to 16" hemlock
C3 L28 and C2 L29	S 16° 20' E, 4.33' to 24" hemlock
C3 L29 and C2 L30	N 66° 13' W, 14.88' to 12" hemlock
C3 L30 and C2 L31	S 35° 40' W, 8.13' to 6" jack pine
C3 L31 and C2 L32	N 33° 48' W, 25.54' to 6" jack pine N 16° 20' E, 3.40' to 4" jack pine S 19° 16' E, 25.99' to 14" hemlock
C3 L32 and C2 L33	S 0° 01' W, 17.74' to 6" hemlock
C3 L33 and C2 L34	N 5° 51' E, 14.49' to 18" cedar
C3 L34 and C2 L35	N 81° 47' E, 7.02' to 4" cedar
C3 L35 and C2 L36	S 81° 32' W, 38.98' to 6" jack pine N 36° 18' W, 53.22' to 14" jack pine S 24° 24' E, 46.46' to 4" jack pine
C3 L36 and C2 L37	S 33° 49' W, 7.58' to 12" hemlock

C3 L37 and C2 L38	N 24° 02' E, 2.82' to 5" jack pine
C3 L38 and C2 L39	N 65° 54' W, 24.60' to 18" hemlock
C3 L39	N 63° 26' W, 5.38' to 9" hemlock S 27° 51' E, 17.87' to 18" hemlock N 58° 46' E, 23.63' to 18" hemlock
C2 L40	N 1° 27' W, 12.31' to 12" hemlock N 61° 48' E, 8.58' to 4" cedar S 38° 49' W, 3.78' to 6" hemlock
C3 L40 and C2 L41	N 6° 43' E, 20.47' to 10" jack pine
C3 L41	N 49° 15' W, 21.99' to 10" jack pine N 7° 30' W, 4.55' to 6" cedar S 45° 29' W, 13.69' to 12" jack pine
WC Sec 8-9-16-17	N 76° 46' W, 4.02' to 24" hemlock N 22° 35' W, 6.87' to 24" cedar N 55° 26' E, 8.46' to 15" cedar



80-7
PETERSBURG
11-10-80
2:00 P.M.
AS/DNR

80-1
Petersburg
2-4-80
12:15 P
AS/DL

AMENDED PLAT

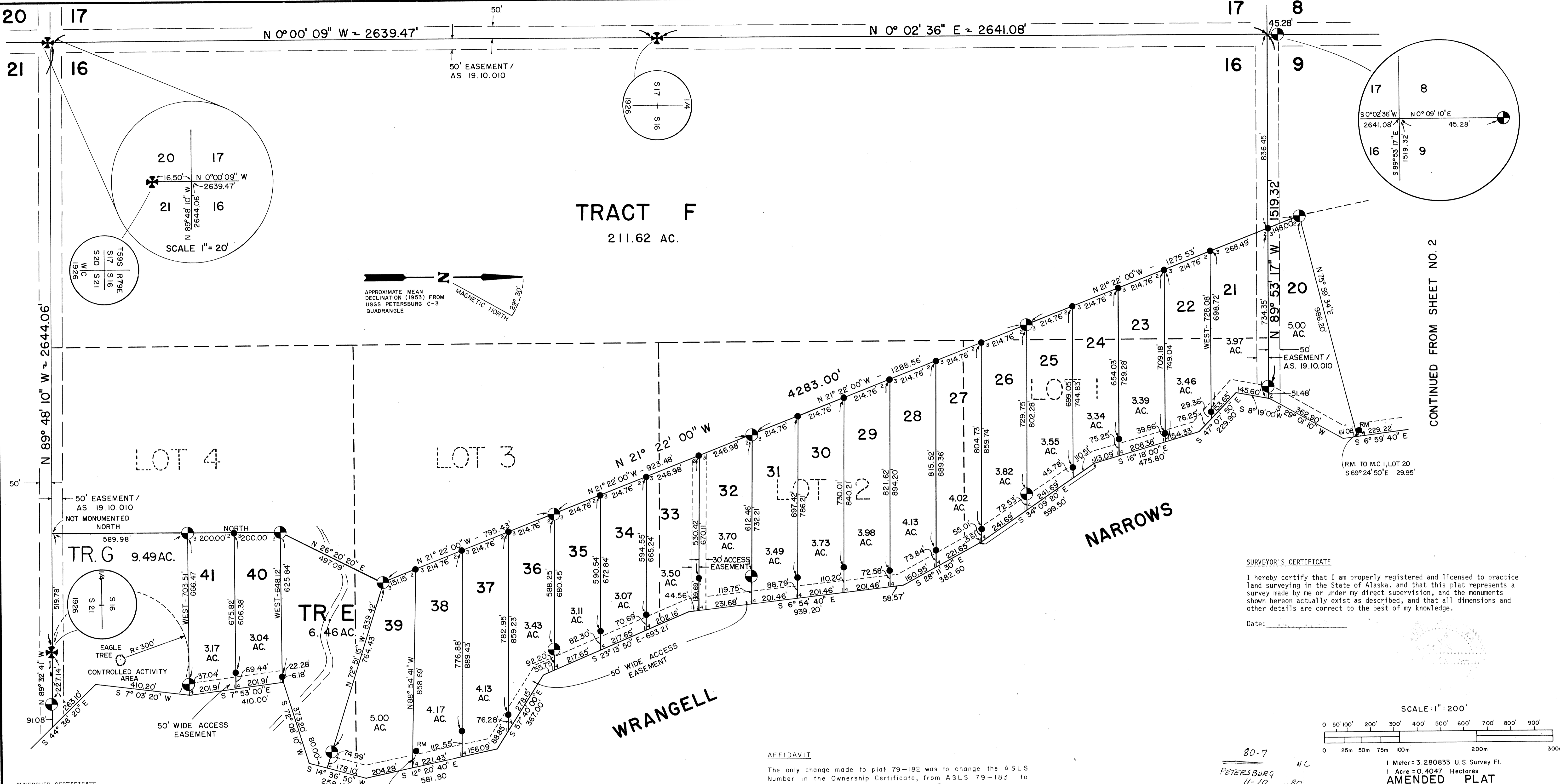
DATE OF SURVEY	NAME OF SURVEYOR
Beginning: 8-23-79	TONER & NORDLING
Ending: 10-10-79	REGISTERED ENGINEERS
	JUNEAU, ALASKA

STATE OF ALASKA
DEPARTMENT OF NATURAL RESOURCES
DIVISION OF TECHNICAL SERVICES
ANCHORAGE, ALASKA

ALASKA STATE LAND SURVEY NO. 79-182

WITHIN TOWNSHIP 59 SOUTH, RANGE 79 EAST, C.R.M.
SEC. 9, LOTS 2, 3, 4 & 5; SEC. 16, W1/2W1/2, LOTS 1, 2
3 & 4; SEC. 21, LOTS 1 & 2; SEC. 22, LOT 3

DRAWN BY	APPROVAL
C.J.L.	RECOMMENDED
DATE	Chief Cadastral Surveyor
SCALE: 1" = 200'	CHECKED: FILE NO. 79-182



TRACT F
211.62 AC.

LOT 4

LOT 3

NARROWS

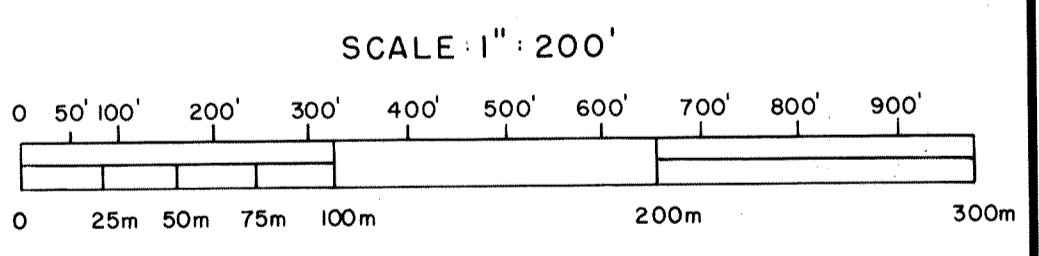
WRANGELL

CONTINUED FROM SHEET NO. 2

SURVEYOR'S CERTIFICATE

I hereby certify that I am properly registered and licensed to practice land surveying in the State of Alaska, and that this plat represents a survey made by me or under my direct supervision, and the monuments shown hereon actually exist as described, and that all dimensions and other details are correct to the best of my knowledge.

Date: _____



OWNERSHIP CERTIFICATE

I, the undersigned, hereby certify that I am the Director, Division of Technical Services, and that the State of Alaska is owner of the lands within Alaska State Land Survey 79-182 as shown hereon. I hereby approve this survey and plat for the State of Alaska.

Date: 1-25-80
Director
Division of Technical Services

NOTARY'S ACKNOWLEDGEMENT

Subscribed and sworn to before me this 25 day of Jan 1980.
Sherrill C. Tollett
Notary for Alaska
My commission expires: Dec 1980

DEDICATION OF EASEMENTS, PUBLIC UTILITIES AND RIGHTS-OF-WAY

I hereby dedicate for public or private use, as noted, all easements, public utility areas, rights-of-way as shown and described hereon.

Date: 1-25-80
Director
Division of Technical Services

AFFIDAVIT

The only change made to plat 79-182 was to change the ASLS Number in the Ownership Certificate, from ASLS 79-183 to ASLS 79-182.

Date: 3-9-81
Director
Division of Technical Services

AFFIDAVIT

The only change made to plat 79-182 was to remove note number 10 relating to the "Homeowners Association". No changes were made to any easements, public utility areas, rights-of-way or ownership.

Date: 11-2-80
Director
Division of Technical Services

DATE OF SURVEY Beginning <u>8-23-79</u> Ending <u>10-10-79</u>	NAME OF SURVEYOR <u>TONER & NORDLING</u> REGISTERED ENGINEERS JUNEAU, ALASKA
--	---

STATE OF ALASKA
DEPARTMENT OF NATURAL RESOURCES
DIVISION OF TECHNICAL SERVICES
ANCHORAGE, ALASKA

ALASKA STATE LAND SURVEY NO. 79-182
WITHIN TOWNSHIP 59 SOUTH, RANGE 79 EAST, C.R.M.
SEC. 9, LOTS 2, 3, 4 & 5; SEC. 16, W1/2W1/2, LOTS 1, 2, 3 & 4; SEC. 21, LOTS 1 & 2; SEC. 22, LOT 3

DRAWN BY C.J.L.	APPROVAL RECOMMENDED <u>[Signature]</u> Chief Cadastral Surveyor Date <u>1/22/80</u>
SCALE: 1" = 200'	CHECKED: _____ FILE NO. 79-182

80-7
PETERSBURG
11-10
2:00 P
AS/DNR

80-1
Petersburg
2-4
12:15 P
AS/DL

AFFIDAVIT

Name of map: A.S.L.S. 79-182
The above referenced map as filed in the Petersburg
Recording Office under map file number 80-7
has been revised as follows:

Changed the ASLS Number in the Ownership Certificate, from ASLS 79-183 to ASLS 79-182

The above revision constitutes the sole change made to the map aside from the notation above the title block on the map. The above revision does not affect any valid existing rights. I am therefore submitting this map for refiling as corrected.

Date 3-9-81 Registration Number 918


Registered Land Surveyor

Subscribed and sworn to before me this 9th day of March, 19 81.


Notary for Alaska

My commission expires:
12-10-84

STATE OF ALASKA
NOTARY PUBLIC
JAMIE L. JONES



