

U. S. SURVEY
No. 3312, ALASKA

Tracts A and B
(TRACTS C, D AND E ARE SHOWN
ON SHEETS 2, 3 AND 4)

AND
DEPENDENT RESURVEYS OF PORTIONS
OF AMENDED U. S. SURVEY NO. 176
AND U. S. SURVEYS NOS. 994, 1254, 1394, 1499, AND 2509

SITUATED
ON THE RIGHT BANK OF THE SKAGWAY RIVER
NEAR THE TOWN OF SKAGWAY

Area Tract A	6.85 Acres
Area Tract B	9.54 Acres
Area Tract C	59.35 Acres
Area Tract D	57.96 Acres
Area Tract E	<u>30.82 Acres</u>
Total Area	164.52 Acres

Geographic Position at Corner No. 1, Tract A
Latitude 59° 29' N. Longitude 135° 16' W.
(Approximate)

Surveyed By
John M. Short, Cartographer (Cadastral)
May 10, 1954 to June 15, 1954
Under Special Instructions
Dated April 5, 1954
And Approved May 3, 1954

UNITED STATES DEPARTMENT OF THE INTERIOR
BUREAU OF LAND MANAGEMENT
Washington, D.C. October 3, 1958

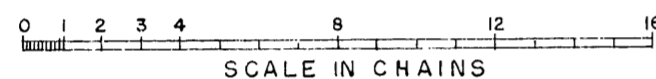
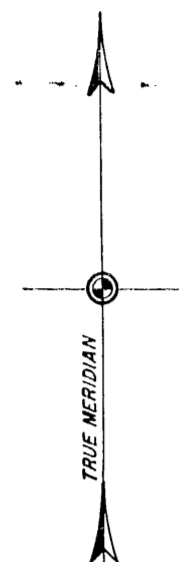
This plat is strictly conformable to the approved field notes, and the survey, having been correctly executed in accordance with the requirements of law and the regulations of this Bureau, is hereby accepted.

For the Director
Earl G. Harrington
Cadastral Engineering Staff Officer

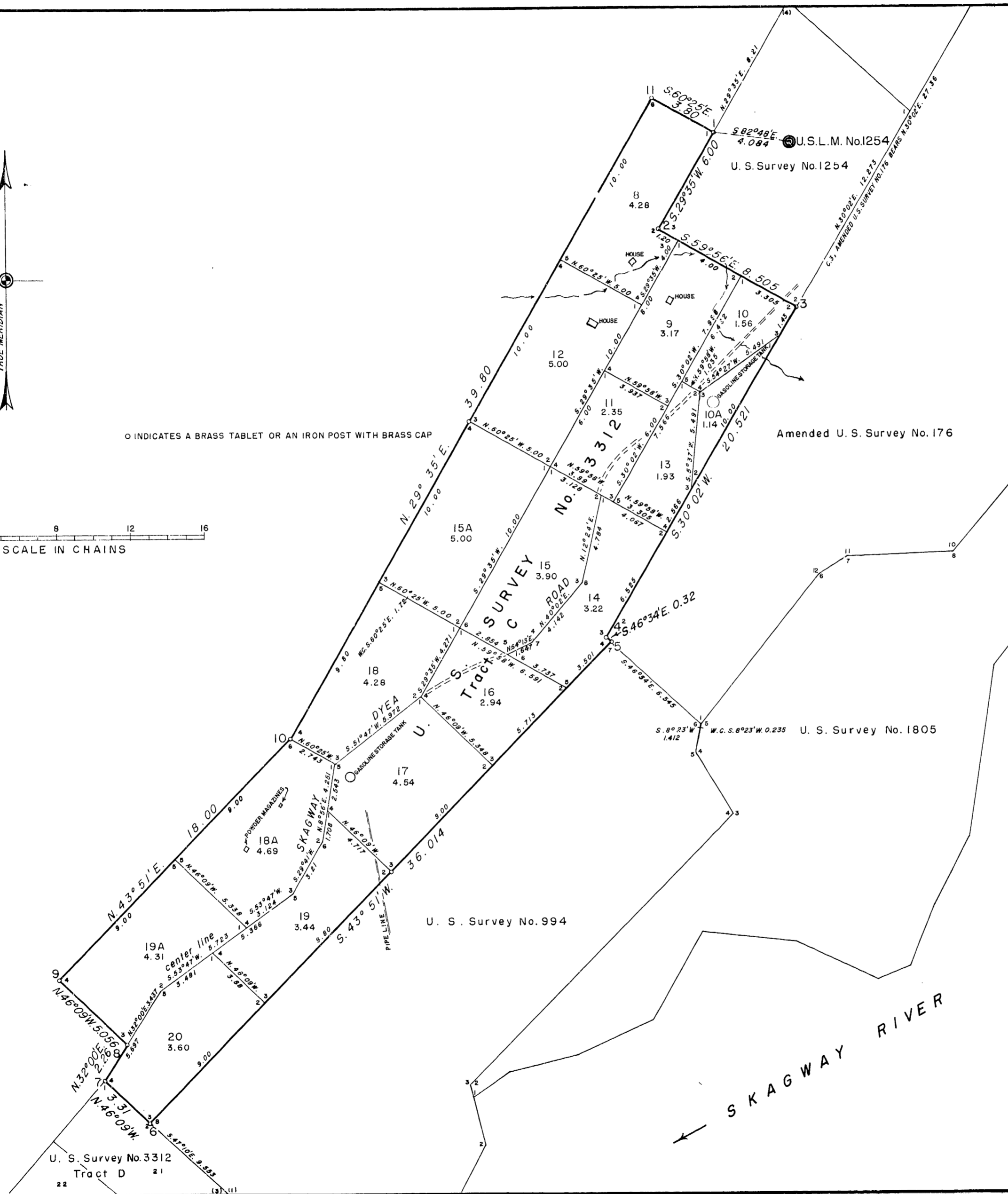
U. S. SURVEY
No. 3312, ALASKA

Tract C
(TRACTS A, B, D, AND E ARE
SHOWN ON SHEETS 1, 3 AND 4)

For Tract Areas and Survey Information
See Sheet No. 1



O INDICATES A BRASS TABLET OR AN IRON POST WITH BRASS CAP



UNITED STATES DEPARTMENT OF THE INTERIOR
BUREAU OF LAND MANAGEMENT
Washington, D.C. October 3, 1958

This plat is strictly conformable to the approved field notes, and the survey, having been correctly executed in accordance with the requirements of law and the regulations of this Bureau, is hereby accepted.

For the Director
Earl G. Harrington
Cadastral Engineering Staff Officer

U. S. SURVEY
No. 3312, ALASKA

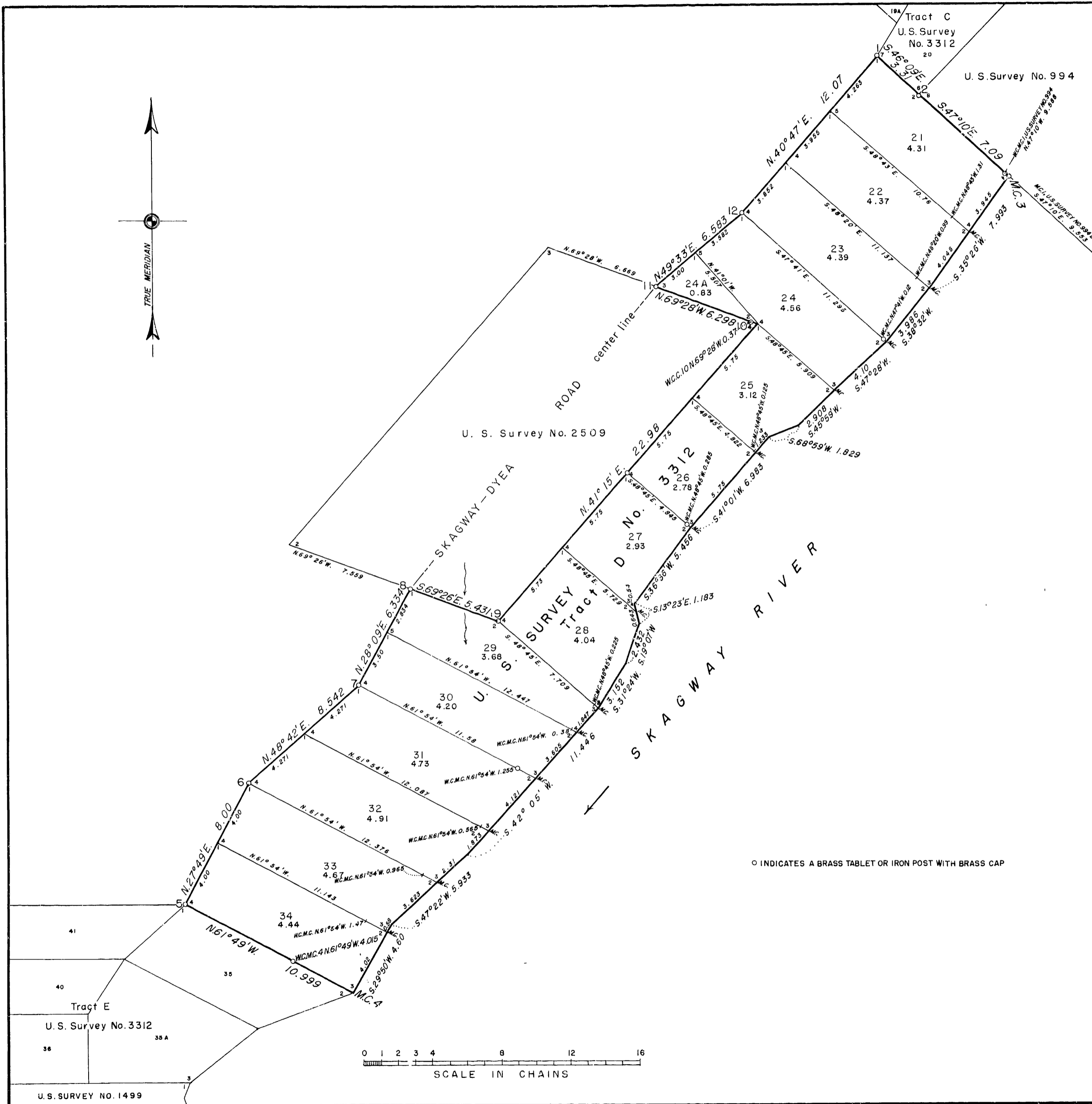
Tract D
(TRACTS A, B, C AND E ARE
SHOWN ON SHEETS 1, 2 AND 4)

For Tract Areas and Survey Information
See Sheet No. 1

UNITED STATES DEPARTMENT OF THE INTERIOR
BUREAU OF LAND MANAGEMENT
Washington, D.C. October 3, 1958

This plat is strictly conformable to
the approved field notes, and the survey,
having been correctly executed in accordance
with the requirements of law and the
regulations of this Bureau, is hereby
accepted.

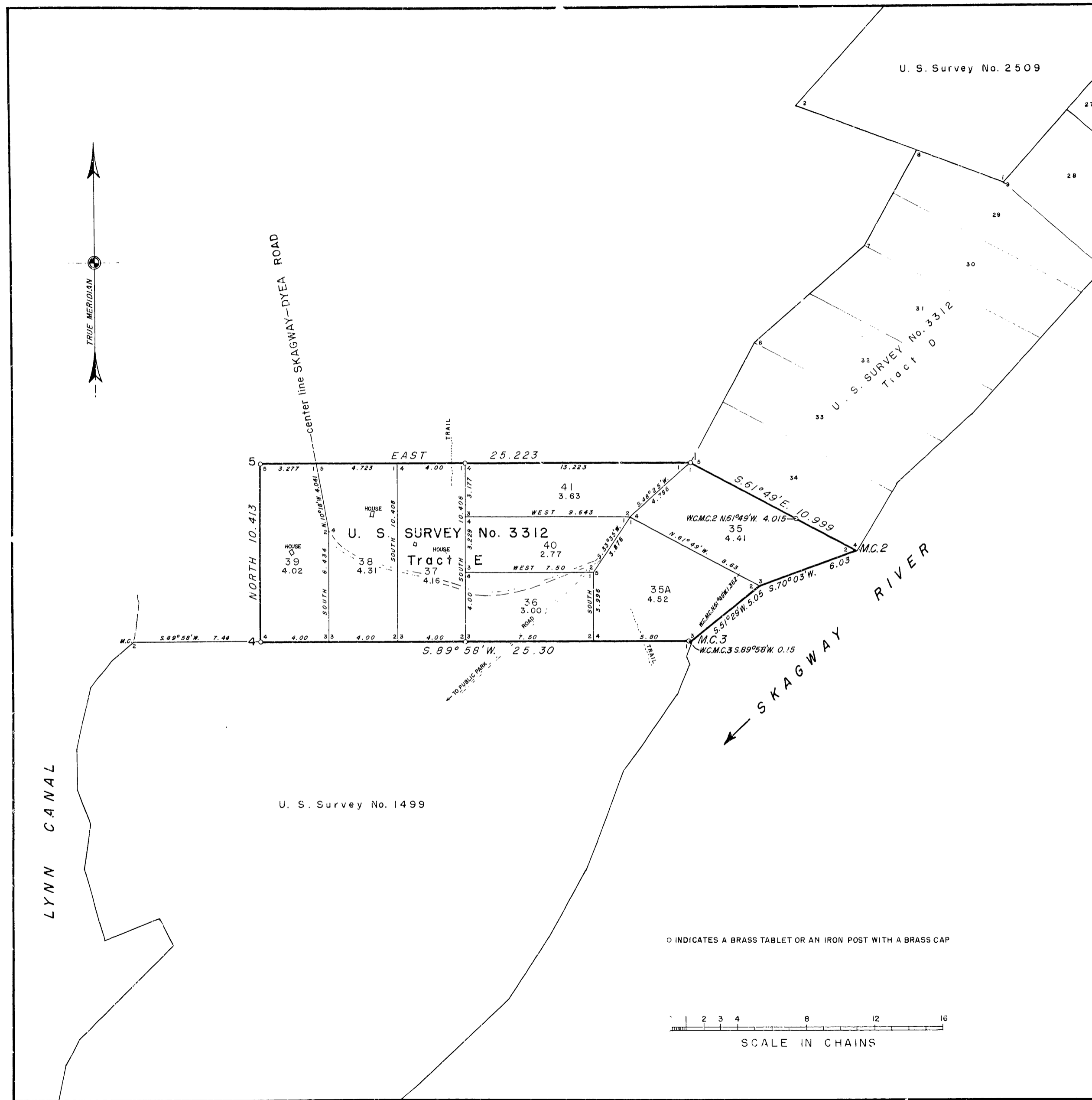
For the Director
Carl G. Harrington
Cadastral Engineering Staff Officer



U. S. SURVEY
No. 3312, ALASKA

Tract E
(TRACTS A, B, C AND D ARE
SHOWN ON SHEETS 1, 2 AND 3)

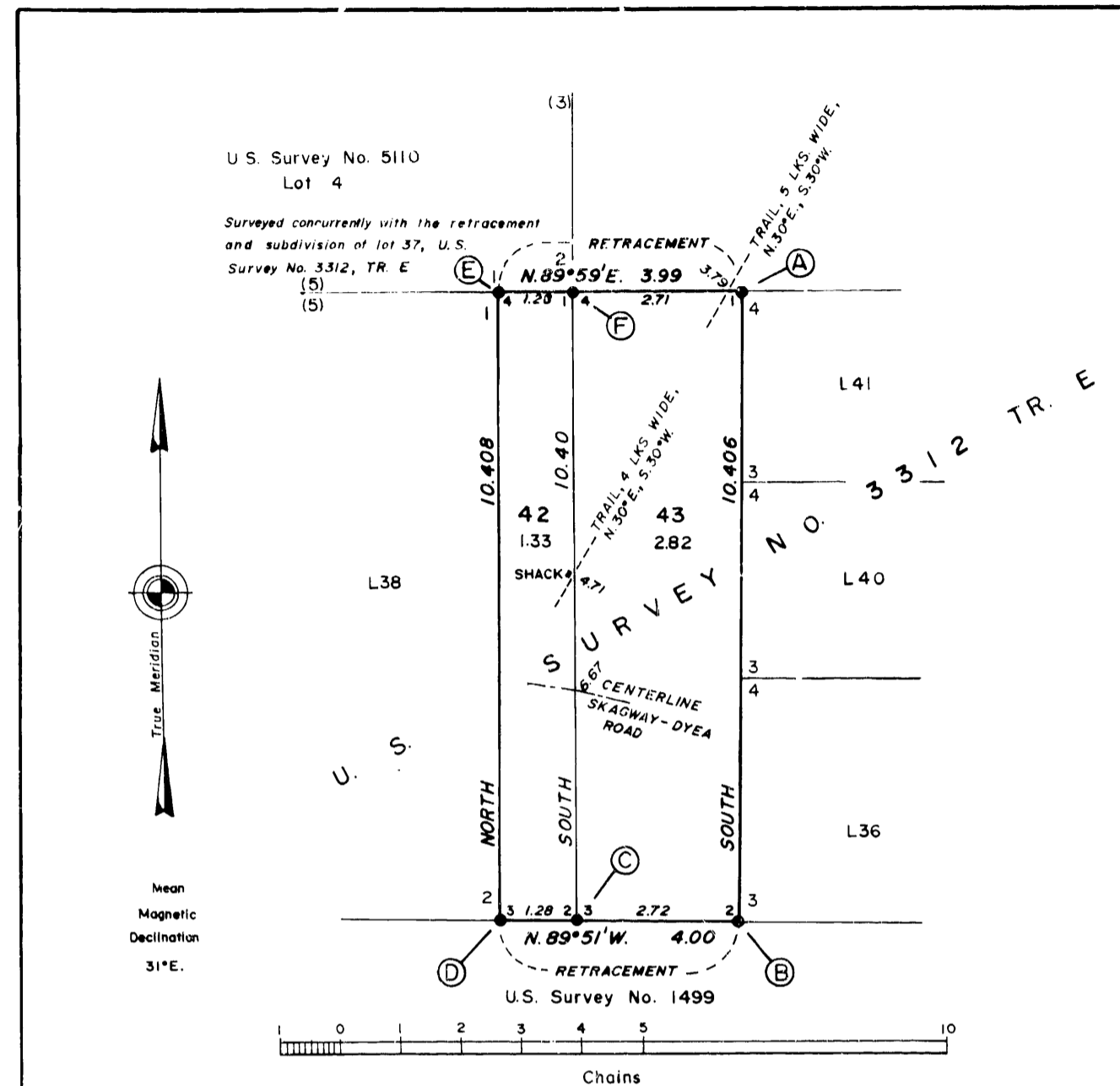
For Tract Areas and Survey Information
See Sheet No. 1



UNITED STATES DEPARTMENT OF THE INTERIOR
BUREAU OF LAND MANAGEMENT
Washington, D.C. October 3, 1958

This plat is strictly conformable to the approved field notes, and the survey, having been correctly executed in accordance with the requirements of law and the regulations of this Bureau, is hereby accepted.

For the Director
Earl G. Harrington
Cadastral Engineering Staff Officer



(E)
S5110
L4
C1 C4
L38 L42
S3312 TRE
1989

Monumented with hewn wood post, 36 ins. long, 2 1/2 ins. square, mkd. LOT 37 C4 on the East side, S3312 TRE on the South side, LOT 38 C1 on the West side.

At the corner point
Set an iron post, 28 ins. long, 2 1/2 ins. diam., 24 ins. in the ground, with brass cap mkd. as shown, from which

A pine, 12 ins. diam., bears N. 5° E., 70 lks. dist., mkd. C1 L4 S5110 BT.

A pine, 12 ins. diam., bears N. 5° E., 70 lks. dist., mkd. C1 L4 S5110 BT.

A pine, 8 ins. diam., bears S. 48° E., 43 lks. dist., mkd. C4 L42 S3312 TRE BT.

A pine, 9 ins. diam., bears S. 32° W., 33 lks. dist., mkd. C1 L38 S3312 TRE BT.

Deposit the hewn post alongside iron post.

Bury a clear DEEP-1 magnet at the base of the iron post.

(F)
S5110
L4
C1 C4
L42 L43
S3312 TRE
1989

Set an iron post, 28 ins. long, 2 1/2 ins. diam., 26 ins. in the ground, and in a collar of stone, with brass cap mkd. as shown, from which

A pine, 8 ins. diam., bears S. 66° E., 51 lks. dist., mkd. C4 L43 S3312 TRE BT.

A pine, 6 ins. diam., bears S. 42° W., 25 lks. dist., mkd. C1 L42 S3312 TRE BT.

A pine, 10 ins. diam., bears N. 19° W., 45 lks. dist., mkd. C2 L4 S5110 BT.

Bury a clear DEEP-1 magnet at the base of the iron post.

(A)
LOT 43 LOT 41
C1 C4
S3312 TRE
1954
1989

Monumented with an iron post, 2 1/2 ins. diam., firmly set in mound of stone 4 1/2 ft wide at the base, 2 ft. high, projecting 3 ins., with brass cap mkd. ASLS 8143 1981 LOT 37 C1 LOT 41 C4 S3312 TRE 1954, add mks. to read as shown, from which the original bearing trees

A pine, 5 ins. diam., bears S. 30° W., 36 lks. dist., mkd. with a healed blaze.

A pine, 12 ins. diam., bears N. 21° W., 32 lks. dist., mkd. S3312 TRE BT on a partially healed blaze.
(Record N. 22 1/2° W.)

(B)
S3312 TRE
LOT 43 LOT 36
C2 C3
S1499
1989
1954

Monumented with a brass tablet cemented flush in protruding bedrock, mkd. S3312 TRE LOT 37 C2 LOT 36 C3 S1499 1954, add mks. to read as shown, from which the original bearing trees

A pine, 8 ins. diam., bears N. 22° E., 24 lks. dist., mkd. S3312 TRE LOT 36 C3 BT on an open blaze. (Record N. 17 3/4° E.)

A pine, 6 ins. diam., bears N. 24° W., 19 lks. dist., mkd. S3312 TRE LOT 37 C2 on a partially healed blaze. (Record N. 31 1/4° W.)

(C)
S3312 TRE
L42 L43
C2 C3
S1499
1989

Cement a brass tablet flush with bedrock, mkd. as shown, from which

A pine, 13 ins. diam., bears N. 50° E., 134 lks. dist., mkd. C3 L43 S3312 TRE BT.

A spruce, 12 ins. diam., bears S. 72° E., 17 lks. dist., mkd. X BT.

A pine, 13 ins. diam., bears N. 52° W., 29 lks. dist., mkd. C2 L42 S3312 TRE BT.

Cement a clear DEEP-1 magnet at base of tablet.

(D)
S3312 TRE
L38 L42
C2 C3
S1499
1989

Monumented with hewn wood post, 36 ins. long, 2 1/2 ins. square, and in a mound of stone, mkd. S3312 TRE on the North side, LOT 37 C3 on the East side, S1499 on the South side, LOT 38 C2 on the West side

At the corner point
Cement an alum. rod, 19 ins. long, 3/4 ins. diam., 6 ins. into bedrock, and in a collar of stone, with alum. cap mkd. as shown, from which

A pine, 9 ins. diam., bears N. 53° E., 65 lks. dist., mkd. C3 L42 S3312 TRE BT

A pine, 7 ins. diam., bears S. 44° E., 51 lks. dist., mkd. X BT.

A pine, 8 ins. diam., bears N. 68° W., 96 lks. dist., mkd. C2 L38 S3312 TRE BT.

Deposit the marked post alongside the aluminum rod in the rock collar.

Cement a clear DEEP-1 magnet at the base of the alum. rod.

IMPROVEMENT

From cor. No. 1, lot 42
The northeast corner of a wood frame shack, 10 x 12 ft., bears S. 0°37' W., 4.63 chs. dist., long side extends S. 30° W.

**U. S. SURVEY
NO. 3312, ALASKA
TRACT E**

**RETRACEMENT AND SUBDIVISION OF LOT 37
CREATING LOTS 42 AND 43**

This plat contains the entire survey record.

U. S. Survey No. 1499 was surveyed by Fred Dahlquist, U.S. Cadastral Engineer, in 1923.

U. S. Survey No. 3312, Tracts A, B, C, D, and E and dependent resurvey of a portion of U.S. Survey No. 1499 were surveyed by John M. Short, Cadastral Cartographer, in 1954.

U.S. Survey No. 5110 was surveyed in 1972 by Frederick W. Ward, Cadastral Surveyor, in 1972.

This survey was executed by Roger Watt Imhoff, Registered Alaska Land Surveyor No. LS-5780, for Survey North, June 22 through June 28, 1989, in accordance with the specifications set forth in the Manual of Surveying Instructions, 1973, under Special Instructions dated April 5, 1954, approved May 3, 1954, and Supplemental Special Instructions dated June 6, 1988, approved July 20, 1988, Contract No. YA-651-CT9-340027 awarded March 24, 1989, and Notice to Proceed dated May 26, 1989.

Field Assistants were:
Douglas A. Popham, Party Chief
Timothy L. Mullikin, Instrument Man

Area: 4.15 Acres

The azimuth was obtained from line 1-2, lot 37, U.S. Survey No. 3312, Tract E, and refers to the true meridian.

The geographic position of corner No. 1, Lot 43, formerly cor. No. 1, Lot 37, U.S. Survey No. 3312, Tract E, as determined by the same control data used to establish cor. No. 8, U.S. Survey No. 5110, is:
Latitude: 59°27'39.81" North
Longitude: 135°19'35.90" West
NAD 27

The mean magnetic declination was taken from U.S. Geological Survey quadrangle map "SKAGWAY (B-1)," Alaska, 1949 edition, with limited revisions in 1978.

This survey is located at mile 2.1 of Skagway-Dyea Road.

The land is a moderately steep and broken southerly facing sideslope vegetated by pine and scattering spruce and birch, with little underbrush.

The soil is a thin layer of moss and duff over bedrock.

Access to this survey was by motor vehicle.

UNITED STATES DEPARTMENT OF THE INTERIOR
BUREAU OF LAND MANAGEMENT
Anchorage, Alaska

The survey represented by this plat, having been correctly executed in accordance with the requirements of law and the regulations of this Bureau, is hereby accepted.

For the Director

MARCH 12, 1990
Date

Ernest J. Imberton
Deputy State Director for Cadastral Survey, Alaska

I, Roger Watt Imhoff, Registered Alaska Land Surveyor, No. LS-5780, HEREBY CERTIFY upon honor that, in pursuance of Special Instructions dated April 5, 1954 and Supplemental Special Instructions dated June 6, 1988, and Contract No. YA-651-CT9-340027 awarded March 24, 1989, I have executed the survey depicted on this plat of survey, in strict conformity with said special instructions, the Manual of Instructions for the Survey of the Public Lands of the United States, 1973, and the specific manner described on this plat.

Feb 5, 1990 Date
[Signature] Signature

