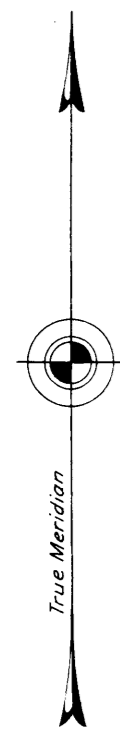
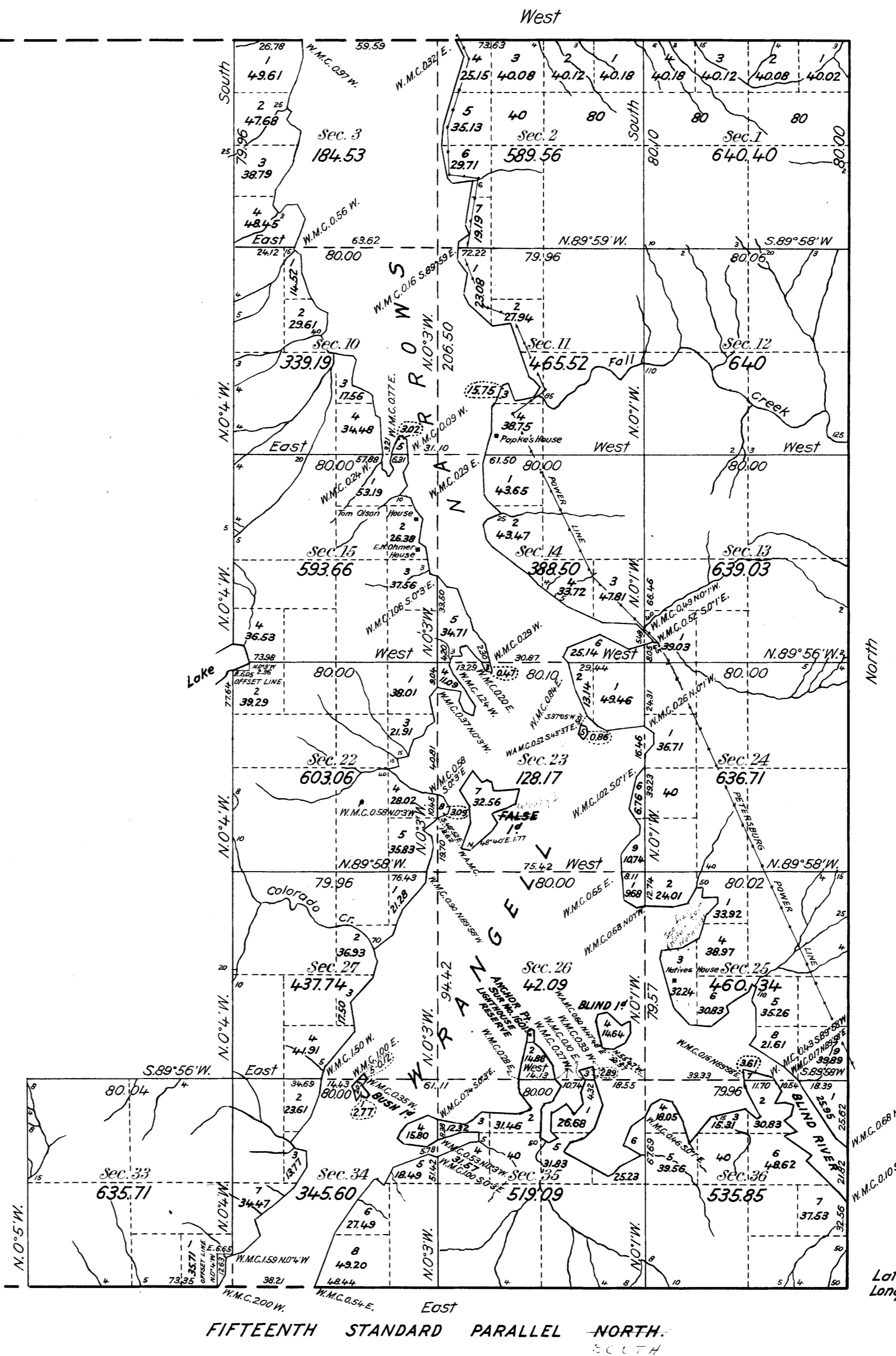


# TOWNSHIP N° 60 SOUTH, RANGE N° 79 EAST OF THE COPPER RIVER MERIDIAN, ALASKA.



UNSURVEYED



See supplemental plat  
Secs. 1, 15, 25

Lot 56° 37' 00" N.  
Long 132° 54' 22" W.  
53° 07' 03" 33"

New bearings taken for 1925 Datum  
of 1/4 sec. 41.

Mean Magnetic Declination, 31° 00' E. Scale: 40 Chains to an Inch. Area Surveyed, 8824.75 Acres.

LINES DESIGNATED	BY WHOM SURVEYED	No	GROUP DATE	MILEAGE MLS. CHS.	WHEN SURVEYED BEGUN COMPLETED
Exterior	E. G. Guerin U.S.C.E.	35	April 8, 1925	13 00	Aug. 10, 1925 Oct. 15, 1925
Subdivisional	"	"	" " "	35 27.85	July 28 " " 24. "
Meander	"	"	" " "	28 39.91	Aug. " " " 22. "
Topography	R. K. Lynt. Geol. Sur.	"	" " "		July 28 " " 24. "

Office of U.S. Supervisor of Surveys  
Denver, Colorado, Dec. 20, 1926.  
The above plat of Township No. 60 South Range No. 79 East  
of the Copper River Meridian, Alaska,  
is strictly conformable to the field notes of the survey  
thereof which have been examined and approved.

*Wm. H. Johnson*  
U.S. Supervisor of Surveys.

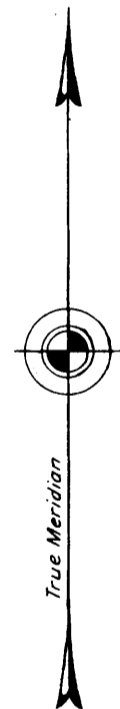
DEPARTMENT OF THE INTERIOR  
GENERAL LAND OFFICE  
Washington, D.C., January 25, 1928.  
The survey represented by this plat  
having been correctly executed in accordance  
with the requirements of law and the regulations  
of this office, is hereby accepted.

*W. H. Casswell*  
Assistant Commissioner.

FOR FIFTEENTH STANDARD PARALLEL, NORTH, SHOWN, SHOULD READ SOUTH. MEMO 504b 4/27/61

(4-675b)

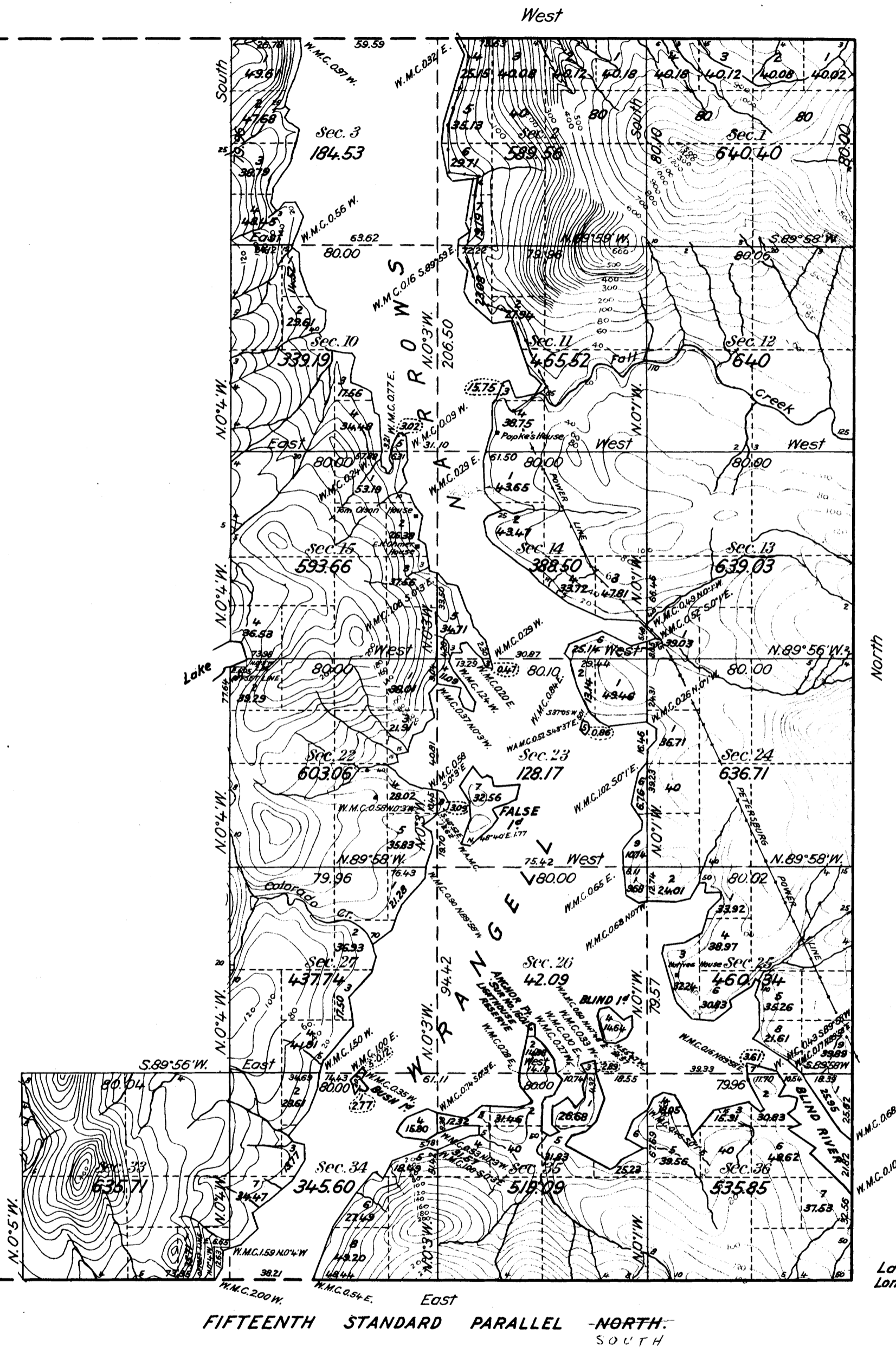
TOWNSHIP N<sup>o</sup> 60 SOUTH, RANGE N<sup>o</sup> 79 EAST OF THE COPPER RIVER MERIDIAN, ALASKA.



Contour interval 20 feet.

Note. Curved lines or contours are lines of equal elevation and represent approximately the form of the earth's surface and the altitude above sea level.

UNSURVEYED



- LEGEND
- Good motor road
  - Poor motor road
  - Road passable to wagon only
  - Trail
  - Telephone line
  - Telephone line along road
  - Telephone line along trail
  - Triangulation station
  - Timbered areas
  - Parks
  - Fence
  - Cabin
  - Bluffs (cliffs, ledges and rock outcrops)

Lat. 56° 37' 00" N.  
Long. 132° 54' 22" W.  
53° 00' 33"

Mean Magnetic Declination, 31° 00' E. Scale: 40 Chains to an Inch. Area Surveyed, 8824.75 Acres.

LINES DESIGNATED	BY WHOM SURVEYED	N <sup>o</sup>	GROUP DATE	MILEAGE MLS. CHS.	WHEN SURVEYED BEGUN COMPLETED
Exterior	E. C. Guerin U.S.C.E.	35	April 8, 1925	13 00	Aug. 10, 1925 Oct. 15, 1925
Subdivisional	"	"	" " "	35 27.85	July 28 " " 24, "
Meander	"	"	" " "	28 39.91	Aug. " " " 22, "
Topography	R. K. Lynt. Geol. Sur.	"	" " "		July 28 " " 24, "

Office of U.S. Supervisor of Surveys  
Denver, Colorado, Dec. 20, 1926.  
The above plat of Township No. 60 South Range No. 79 East  
of the Copper River Meridian, Alaska,  
is strictly conformable to the field notes of the survey  
thereof which have been examined and approved.

*Wm. H. Johnson*  
U.S. Supervisor of Surveys.

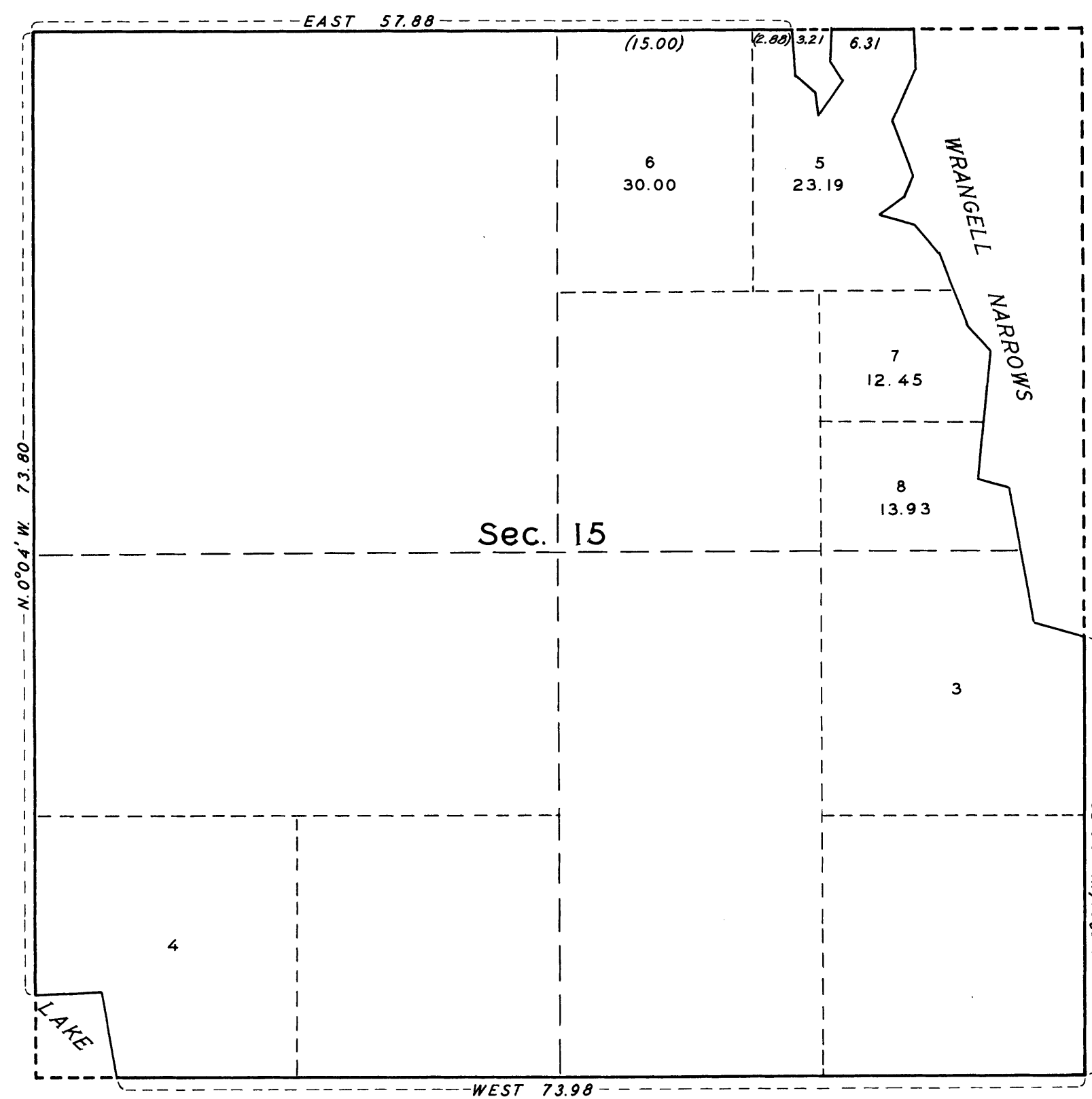
DEPARTMENT OF THE INTERIOR  
GENERAL LAND OFFICE  
Washington, D.C., January 25, 1928.  
The survey represented by this plat  
having been correctly executed in accordance  
with the requirements of law and the regulations  
of this office, is hereby accepted.

*Thos. C. Howell*  
Assistant Commissioner.

## TOWNSHIP NO. 60 SOUTH, RANGE NO. 79 EAST, COPPER RIVER MERIDIAN, ALASKA.

## SUPPLEMENTAL PLAT OF SECTION 15.

SCALE: 10 CHAINS TO AN INCH.



DEPARTMENT OF THE INTERIOR  
GENERAL LAND OFFICE  
WASHINGTON, D. C., OCTOBER 2, 1936.

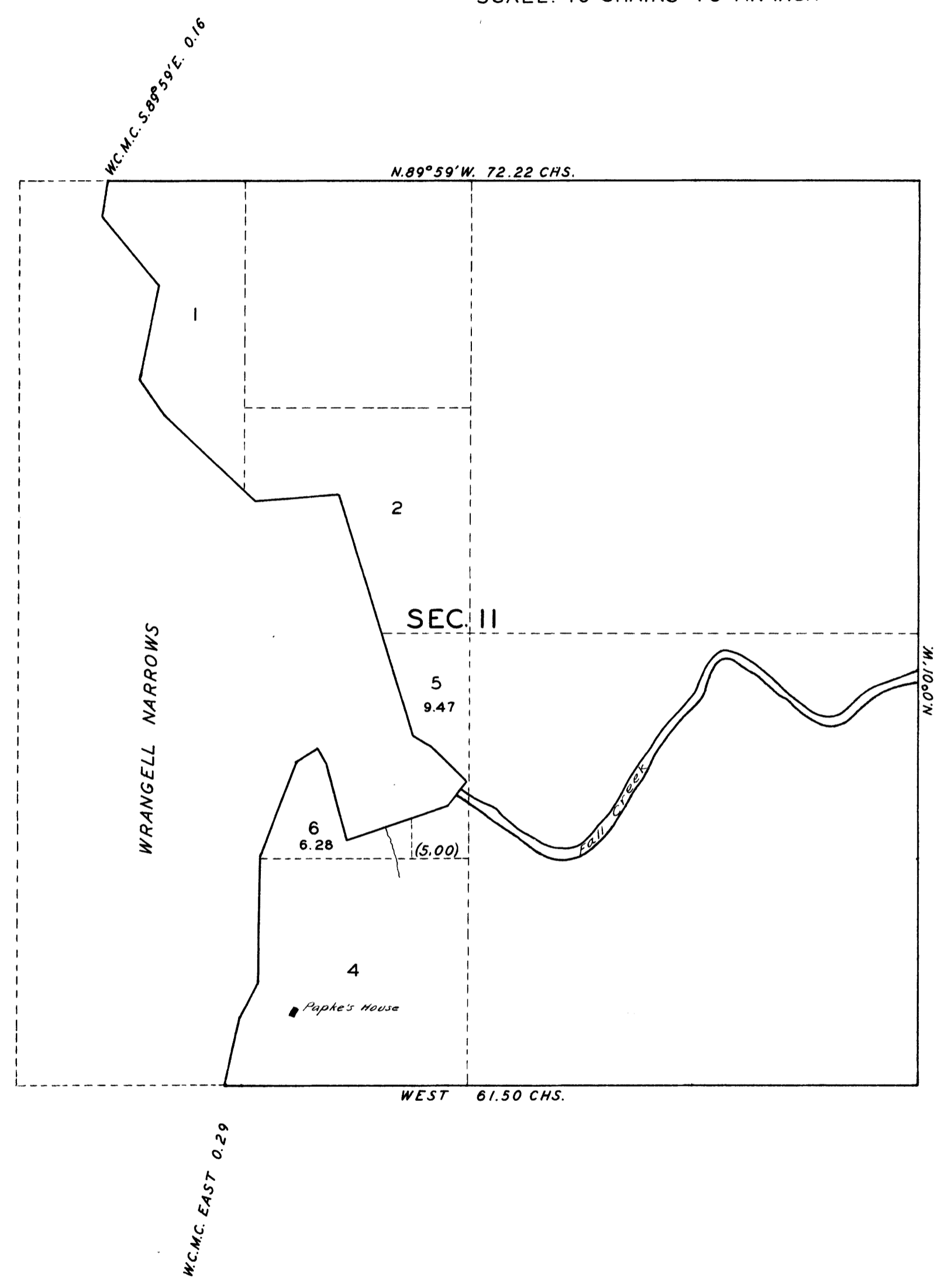
THE ABOVE SUPPLEMENTAL PLAT OF SECTION 15, TOWNSHIP NO. 60 SOUTH, RANGE NO. 79 EAST, OF THE COPPER RIVER MERIDIAN, ALASKA, BASED UPON THE PLAT APPROVED DECEMBER 20, 1926, SHOWING A SUBDIVISION OF ORIGINAL LOTS 1 AND 2, TO ACCOMMODATE HOMESTEAD ENTRY ANCHORAGE 07458, HAVING BEEN CORRECTLY PREPARED IN ACCORDANCE WITH THE REGULATIONS OF THIS OFFICE, IS HEREBY APPROVED.

*Antoinette F. Furr*  
ASSISTANT COMMISSIONER.

TOWNSHIP NO. 60 SOUTH, RANGE NO. 79 EAST, COPPER RIVER MERIDIAN, ALASKA.

SUPPLEMENTAL PLAT OF SECTION II

SCALE: 10 CHAINS TO AN INCH



UNITED STATES  
DEPARTMENT OF THE INTERIOR  
GENERAL LAND OFFICE  
WASHINGTON, D.C. SEPTEMBER 12, 1940.

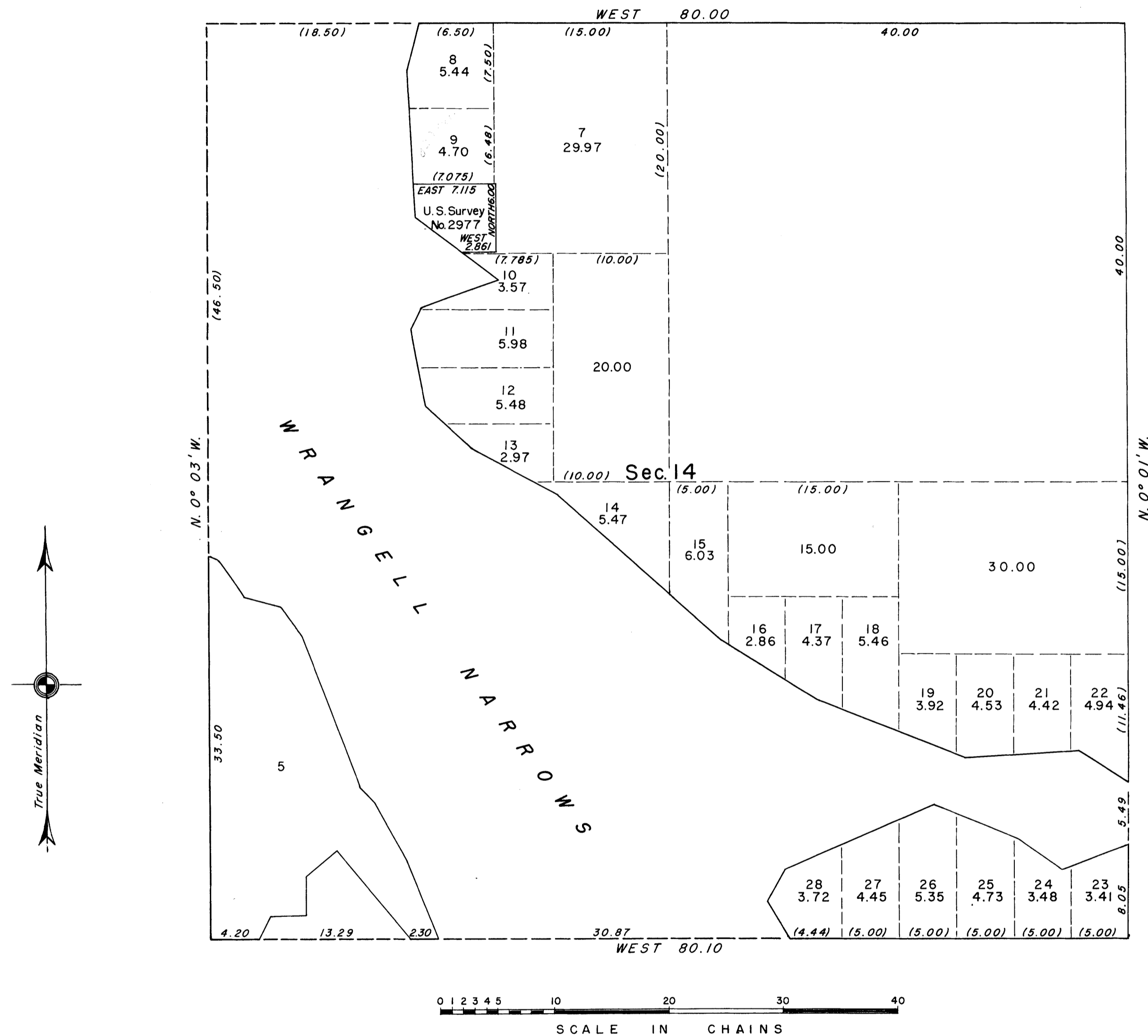
THE ABOVE SUPPLEMENTAL PLAT OF SECTION 11, TOWNSHIP NO. 60 SOUTH, RANGE NO. 79 EAST, OF THE COPPER RIVER MERIDIAN, ALASKA, BASED UPON THE PLAT APPROVED DECEMBER 20, 1926, SHOWING A SUBDIVISION OF ORIGINAL LOT 3 TO ACCOMMODATE FOREST HOMESTEAD ENTRY ANCHORAGE 07588, HAVING BEEN CORRECTLY PREPARED IN ACCORDANCE WITH THE REGULATIONS OF THIS OFFICE, IS HEREBY APPROVED.

*Joel David Wolfson*  
ACTING ASSISTANT COMMISSIONER

*J.R.H.*  
*6/50*

## TOWNSHIP 60 SOUTH, RANGE 79 EAST, OF THE COPPER RIVER MERIDIAN, ALASKA

## SUPPLEMENTAL PLAT OF SECTION 14



This supplemental plat of sec. 14, T. 60 South, R. 79 East, Copper River Meridian, Alaska, based upon the plat accepted January 25, 1928 and the record of U. S. Survey No. 2977, is prepared to show the segregation of U. S. Survey No. 2977 from original Lot 1 and the subdivision of original Lots 1, 2, 3, 4 and 6 into new Lots 7 to 28 inclusive.

UNITED STATES DEPARTMENT OF THE INTERIOR  
BUREAU OF LAND MANAGEMENT  
Washington, D. C., April 30, 1952

This plat showing amended lottings, having been correctly prepared in accordance with the regulations, is hereby accepted.

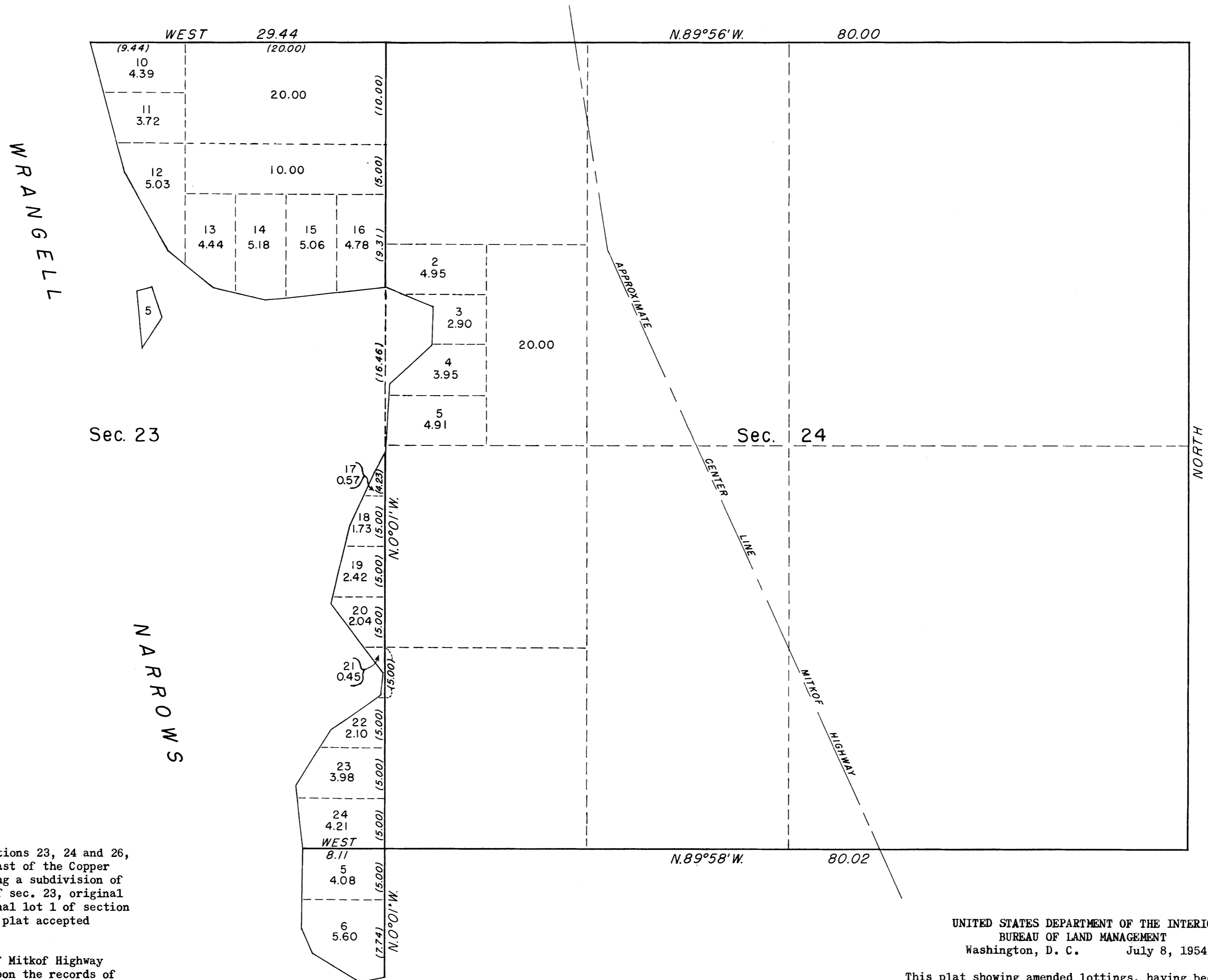
For the Director

*William F. Richards*

Chief, Branch of Surveys

TOWNSHIP 60 SOUTH, RANGE 79 EAST, OF THE COPPER RIVER MERIDIAN, ALASKA.

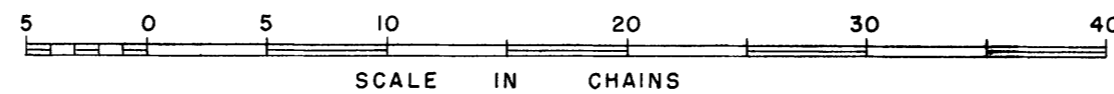
SUPPLEMENTAL PLAT OF SECTIONS 23, 24, & 26.



This supplemental plat of sections 23, 24 and 26, Township 60 South, Range 79 East of the Copper River Meridian, Alaska, showing a subdivision of original lots 1, 2, 6 and 9 of sec. 23, original lot 1 of section 24 and original lot 1 of section 26 is based upon the township plat accepted January 25, 1928.

The approximate center line of Mitkof Highway through section 24 is based upon the records of the Bureau of Public Roads and is shown as an item of topography only.

Sec. 26



UNITED STATES DEPARTMENT OF THE INTERIOR  
BUREAU OF LAND MANAGEMENT  
Washington, D. C. July 8, 1954

This plat showing amended lottings, having been correctly prepared in accordance with the regulations, is hereby accepted.

For the Director

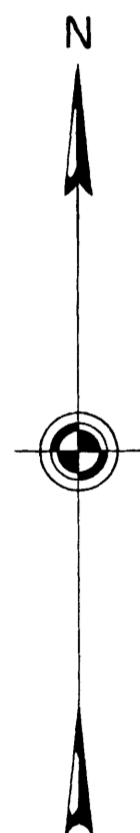
*Donald B. Clement*

Acting Cadastral Engineering Officer

TOWNSHIP 60 SOUTH, RANGE 79 EAST, OF THE COPPER RIVER MERIDIAN, ALASKA.  
SUPPLEMENTAL PLAT OF SECTION 25

WRANGELL

NARROWS



This supplemental plat of sec. 25, T. 60 S., R. 79 E., C. R. M., Alaska, showing the segregation of U. S. Survey No. 2609 and the subdivision of original lots 1 to 9, inclusive, and the SW $\frac{1}{4}$ NE $\frac{1}{4}$ , is based on plat accepted January 25, 1928 and the record of U. S. Survey No. 2609 for meanders in this section.

The approximate center line Mitkof Highway in section 25 is based upon the records of the Bureau of Public Roads and is shown as an item of topography only.

UNITED STATES  
DEPARTMENT OF THE INTERIOR  
Bureau of Land Management  
Washington, D. C.  
July 12, 1954

This plat showing amended lottings, having been correctly prepared in accordance with the regulations, is hereby accepted.

For the Director

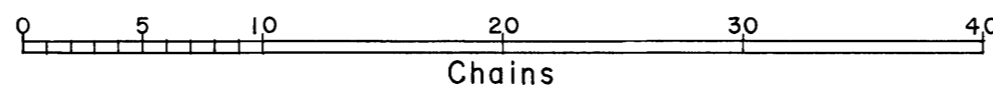
*Gonzalez Clement*

Acting Cadastral Engineering Officer

5 0 5 10 15 20  
SCALE IN CHAINS

WRANGELL

NARROWS

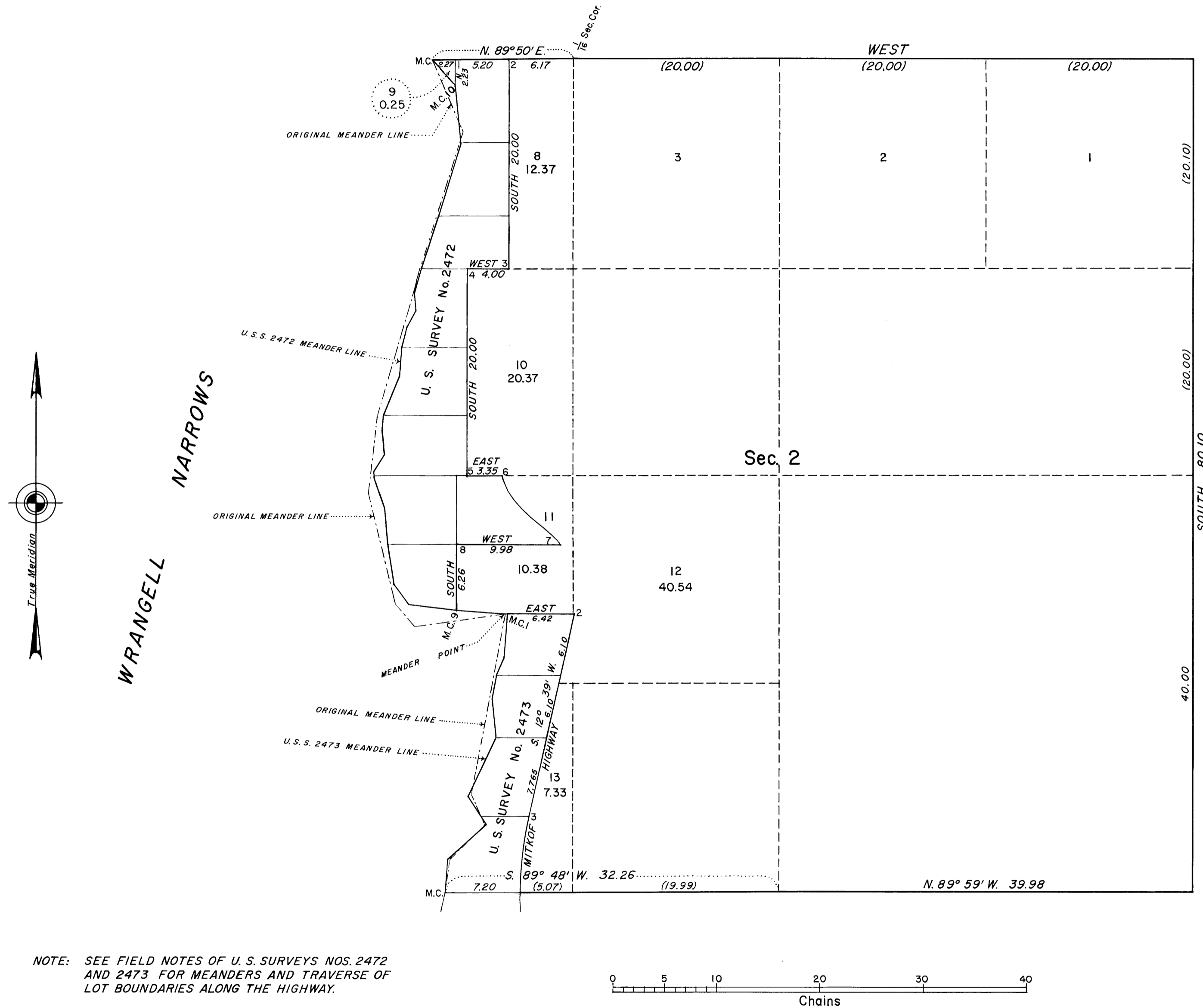


UNITED STATES DEPARTMENT OF THE INTERIOR  
BUREAU OF LAND MANAGEMENT  
Washington, D.C. December 13, 1960

For the Director

Cadastral Engineering Staff Officer

TOWNSHIP 60 SOUTH, RANGE 79 EAST, OF THE COPPER RIVER MERIDIAN, ALASKA  
SUPPLEMENTAL PLAT OF SECTION 2



NOTE: SEE FIELD NOTES OF U. S. SURVEYS NOS. 2472 AND 2473 FOR MEANDERS AND TRAVERSE OF LOT BOUNDARIES ALONG THE HIGHWAY.

This plat shows amended lottings created by the segregation of U. S. Surveys Nos. 2473 and 2472 and is based upon the township plat accepted January 25, 1928, and the plats of U.S. Surveys Nos. 2472 and 2473 accepted June 19, 1941.

The area of lot 9 was computed using the meander course between a meander corner of sec. 2 and a meander corner of U. S. Survey No. 2472, and the area of lot 11 was computed using the meander courses, between a meander corner of U.S. Survey No. 2472 and an angle point of lot 11 or original lot 6 and between a meander corner of U.S. Survey No. 2473 and the same angle point of lot 11 or original lot 6.

UNITED STATES DEPARTMENT OF THE INTERIOR  
BUREAU OF LAND MANAGEMENT  
Washington, D.C. February 14, 1961

This plat, showing amended lottings, is based upon the official records, and having been correctly prepared in accordance with the regulations, is hereby accepted.

For the Director

*Donald O. Clement*

Cadastral Engineering Staff Officer

TOWNSHIP 60 SOUTH, RANGE 79 EAST, OF THE COPPER RIVER MERIDIAN, ALASKA

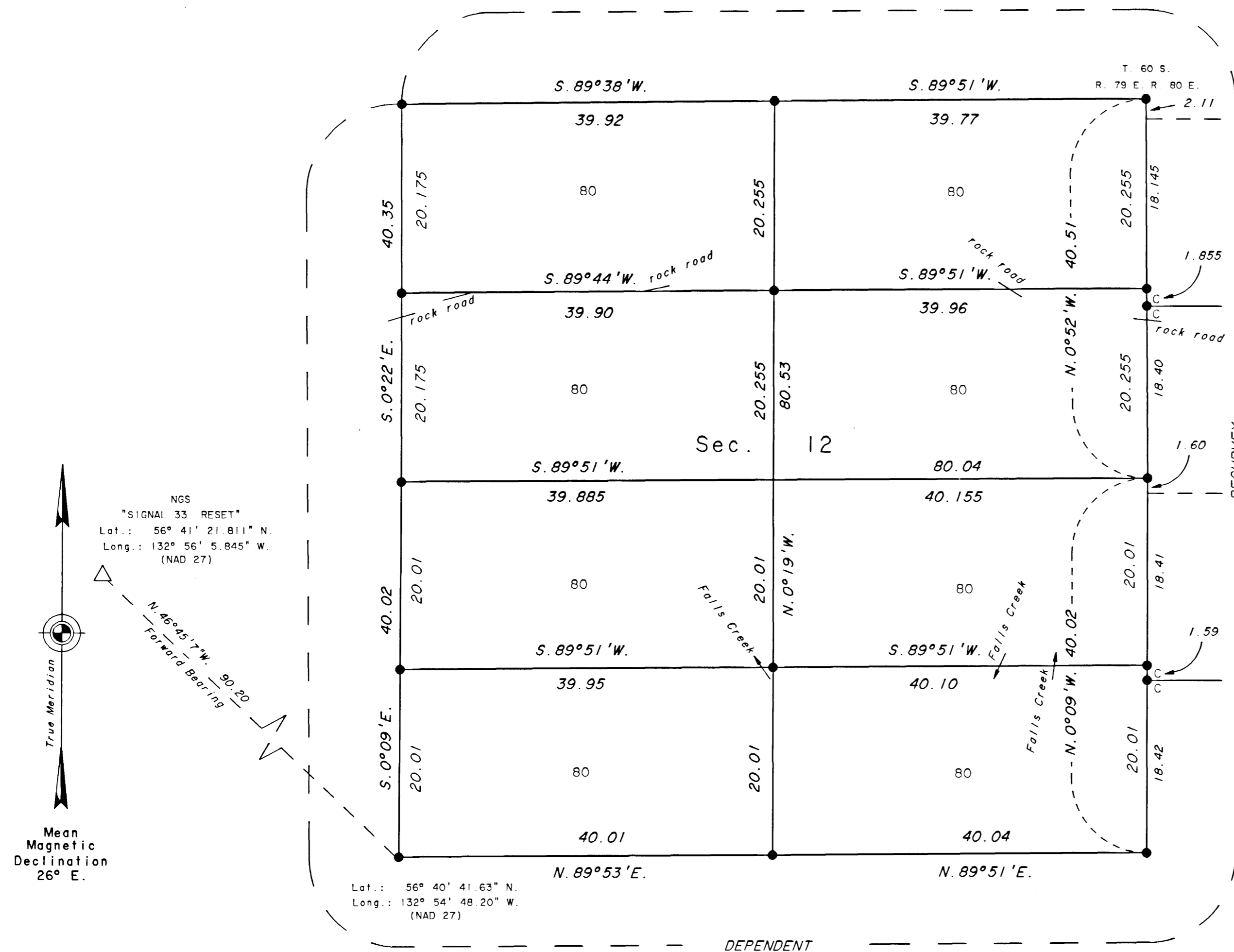


This survey was executed by Wm. Samuel Bunge, Cadastral Surveyor, U.S. Forest Service, April 11 through June 22, 1988, in accordance with the Special Instructions set forth in the Manual of Surveying Instructions, 1973, Special Instructions for Group No. 451, Alaska, dated June 26, 1987, approved July 31, 1987, and Assignment Instructions dated July 31, 1987.

Deputy State Director for Cadastral Survey,  
Alaska

PROT: CR 14-12 T60S R79E CRM  
PETERSBURG C-4

TOWNSHIP 60 SOUTH, RANGE 79 EAST, OF THE COPPER RIVER MERIDIAN, ALASKA



The history of surveys is contained in the field notes.

This survey and the field notes represent the dependent resurvey of a portion of the East boundary and a portion of the subdivisional lines and the survey of a portion of the subdivision of section lines of section 12, of Township 60 South, Range 79 East, Copper River Meridian, Alaska. This survey was executed by Wm. Samuel Bunge, RLS, Cadastral Surveyor, U.S. Forest Service, April 19, 2000 through May 24, 2001, in accordance with the Manual of Surveying Instructions, 1973, Special Instructions for Group No. 751, Alaska, dated February 29, 2000, approved March 16, 2000, and Assignment Instructions dated March 16, 2000.

Acceptance of this survey does not purport to transfer any interest in submerged lands to which the State of Alaska is entitled under the Equal Footing Doctrine and Section 6(m) of the Alaska Statehood Act, P.L. 85-508, notwithstanding the use, location, or absence of meander lines to depict water bodies.

UNITED STATES DEPARTMENT OF THE INTERIOR  
BUREAU OF LAND MANAGEMENT  
Anchorage, Alaska

This plat is strictly conformable to the approved field notes, and the survey, having been correctly executed in accordance with the requirements of law and the regulations of this Bureau, is hereby accepted.

For the Director

*George D. Chua* 22 MARCH 2002  
Date

Deputy State Director for Cadastral Survey, Alaska

PRO