

AFFIDAVIT

Name of map: Nenana South
The above referenced map as filed in the Nenana
Recording Office under map file number .81-3
has been revised as follows:

Note No. 4 has been changed by removing "such lots or tracts" and inserting the words "Easements in notes 1 & 2".

81-4

RECORDED - FILED <i>NE</i>	
NENANA	
DATE <i>4-13</i>	<i>81</i>
TIME <i>9:13</i>	<i>A</i>
Submitted by <i>AS/DNR</i>	
Address <i>AS/DNR</i>	

The above revision constitutes the sole change made to the map aside from the notation above the title block on the map. The above revision does not affect any valid existing rights. I am therefore submitting this map for refileing as corrected.

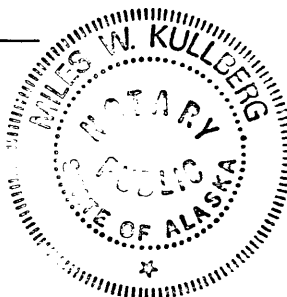
Date April 9, 1981 Registration Number 918

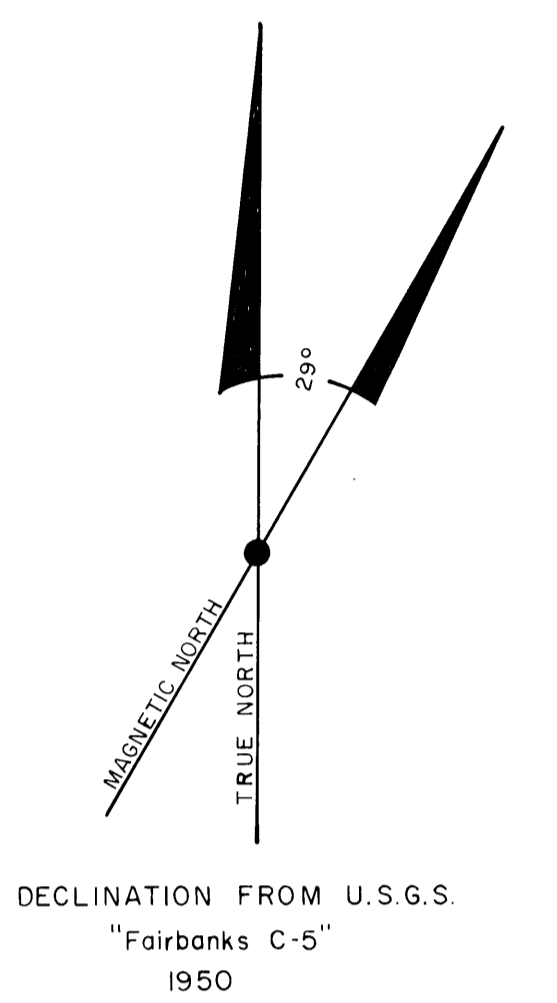
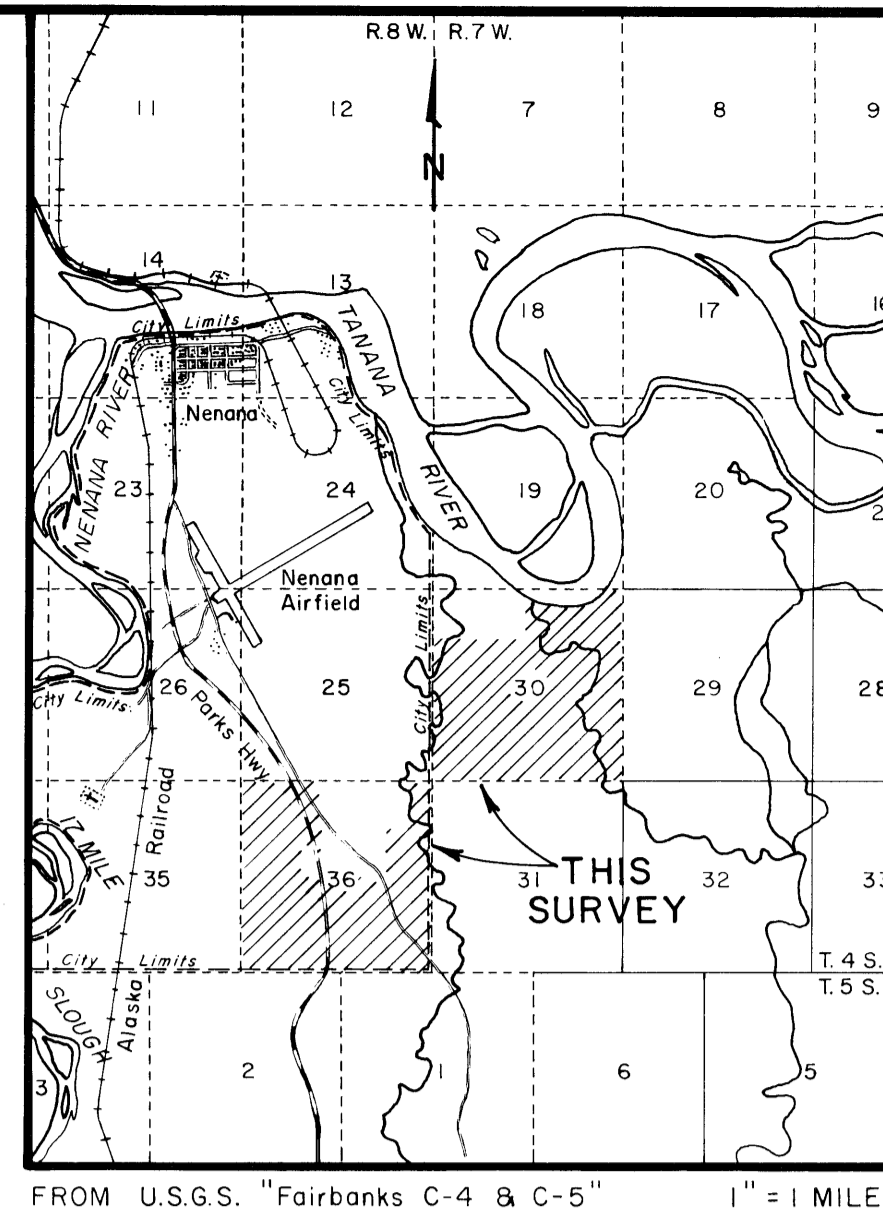
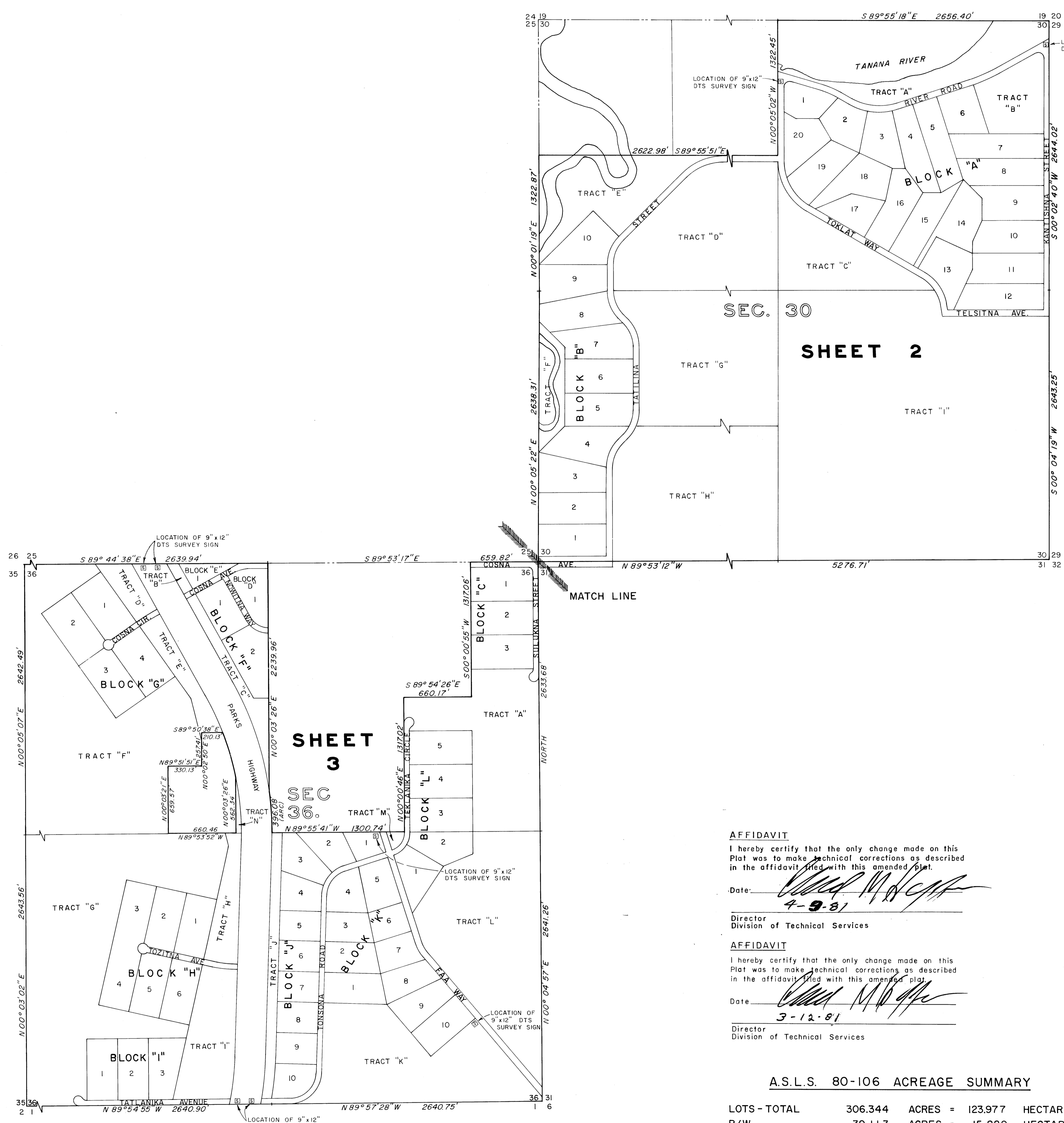
[Signature]
Registered Land Surveyor

Subscribed and sworn to before me this 9th day of April, 1981,

Miles W. Kulleberg
Notary for Alaska

My commission expires:
12-10-84





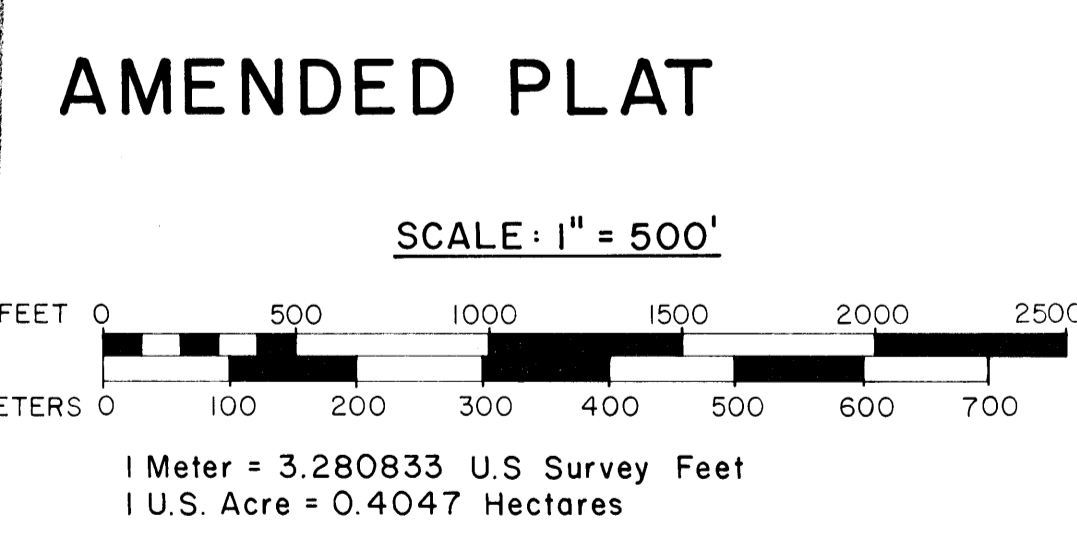
AFFIDAVIT
 I hereby certify that the only change made on this Plat was to make technical corrections as described in the affidavit filed with this amended plat.
 Date: 4-9-81
 Director
 Division of Technical Services

AFFIDAVIT
 I hereby certify that the only change made on this Plat was to make technical corrections as described in the affidavit filed with this amended plat.
 Date: 3-12-81
 Director
 Division of Technical Services

A.S.L.S. 80-106 ACREAGE SUMMARY

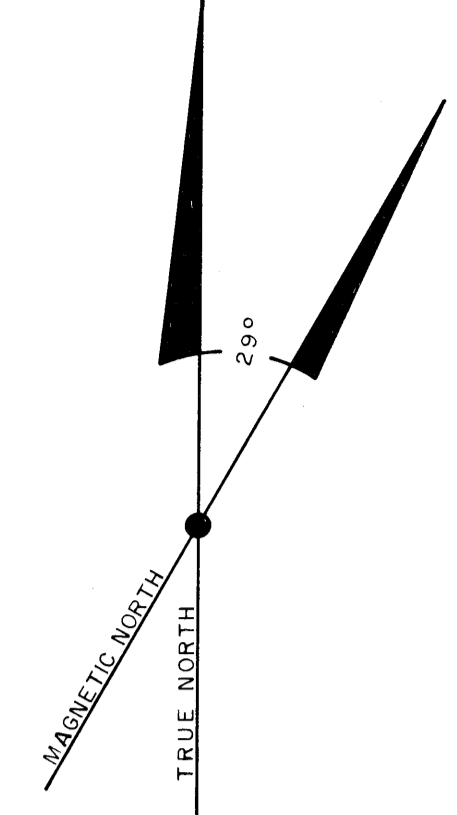
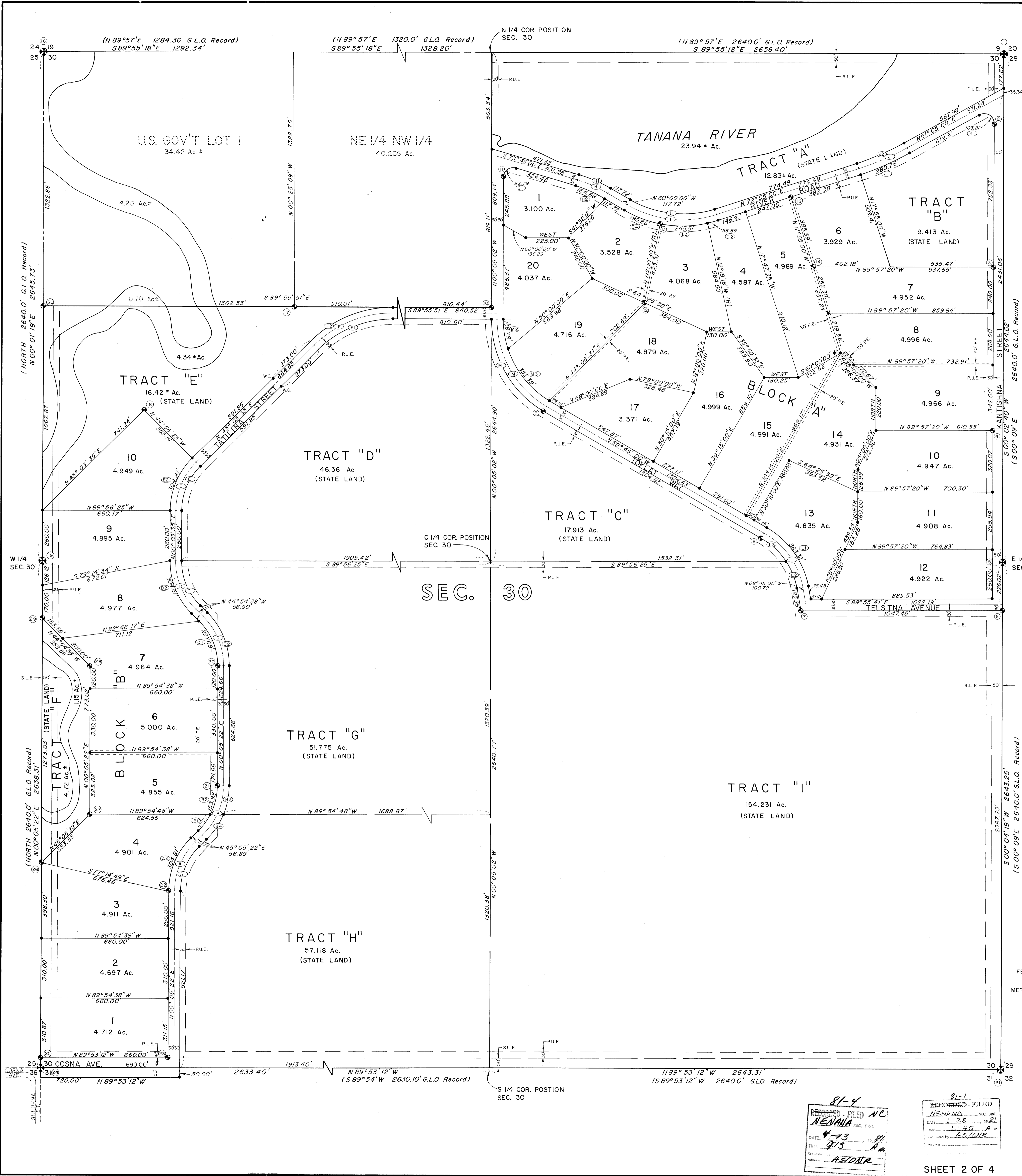
LOTS - TOTAL	306.344	ACRES =	123.977	HECTARES
R/W	39.113	ACRES =	15.829	HECTARES
PARKS HWY. R/W	37.963	ACRES =	15.364	HECTARES
TRACTS	677.088	ACRES =	274.018	HECTARES
WATER BODIES	29.43±	ACRES =	11.910	HECTARES
TOTAL GROSS	1089.938	ACRES =	441.098	HECTARES
TOTAL NET	1022.545	ACRES =	413.824	HECTARES

- LEGEND**
- ⊗ G.L.O. AND/OR B.L.M. MONUMENT RECOVERED
 - ⊕ D.N.R. OFFICIAL OR PRIMARY BRASS CAP MONUMENT SET
 - ⊙ D.N.R. OFFICIAL OR PRIMARY BRASS CAP MONUMENT RECOVERED
 - COPPERWELD OR EQUIVALENT SECONDARY MONUMENT SET
 - ⊗ 3/4" IRON PIPE SET
 - ⊙ U.S.G.S., U.S.C&G.S., U.S.C.E. AND B.L.M. E.T. POINTS
 - REBAR WITH CAP RECOVERED
 - ⊕ STATE OF ALASKA D.O.T. R/W MONUMENT RECOVERED
 - ⊕ MONUMENT AND BEARING TREE IDENTIFICATION NUMBER
 - ⊕ STREET CENTERLINE CURVE DESIGNATIONS
 - ⊕ LOT LINE CURVE DESIGNATIONS
 - SECTION LINE EASEMENT - 50.00' (S.L.E.)
 - PUBLIC UTILITY EASEMENT - 30.00' (P.U.E.)
 - PEDESTRIAN EASEMENT - 20.00' (P.E.)
 - ⊕ LOCATION OF 9"x12" DTS SURVEY SIGN



81-4
 FILED
 NENANA REC. DIST.
 DATE: 4-13-81
 2:13 A
 REGISTERED BY: ASTOUR

DATE OF SURVEY Beginning July, 1980 Ending Sept. 1980	NAME OF SURVEYOR Stutzmann Engineering Associates P.O. Box 1429, Fairbanks, Ak. 99707
STATE OF ALASKA DEPARTMENT OF NATURAL RESOURCES DIVISION OF TECHNICAL SERVICES ANCHORAGE, ALASKA	
L.A.D.S. NO. 0153-81-1-3 ALASKA STATE LAND SURVEY NO. 80-106 WITHIN: SECTION 30 T. 4 S., R. 7 W. SECTION 36 T. 4 S., R. 8 W. FAIRBANKS MERIDIAN, ALASKA	
DRAWN BY J. Keller Date: Sept. 1980	APPROVAL RECOMMENDED [Signature] Chief Cadastral Surveyor Date
SCALE 1" = 500'	CHECKED [Signature] FILE NO. 80-106

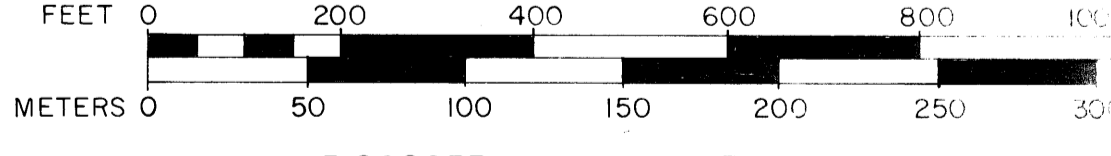


DECLINATION FROM U.S.G.S.
"Fairbanks C-5"
1950

- LEGEND**
- ⊕ G.L.O. AND/OR B.L.M. MONUMENT RECOVERED
 - ⊙ D.N.R. OFFICIAL OR PRIMARY BRASS CAP MONUMENT SET
 - ⊙ D.N.R. OFFICIAL OR PRIMARY BRASS CAP MONUMENT RECOVERED
 - COPPERWELD OR EQUIVALENT SECONDARY MONUMENT SET
 - ⊙ 3/4" IRON PIPE SET
 - ⊙ U.S.G.S., U.S.C.B.G.S., U.S.C.E. AND B.L.M. E.T. POINTS
 - REBAR WITH CAP RECOVERED
 - ⊙ STATE OF ALASKA D.O.T. R/W MONUMENT RECOVERED
 - ⊙ MONUMENT AND BEARING TREE IDENTIFICATION NUMBER
 - ⊙ STREET CENTERLINE CURVE DESIGNATIONS
 - ⊙ LOT LINE CURVE DESIGNATIONS
 - SECTION LINE EASEMENTS - 50.00' WIDE (S.L.E.)
 - PUBLIC UTILITY EASEMENTS - 30.00' WIDE (P.U.E.)
 - PEDESTRIAN EASEMENT - 20.00' WIDE (P.P.E.)

AMENDED PLAT

SCALE: 1" = 200'



DATE OF SURVEY Beginning July, 1980 Ending Sept. 1980	NAME OF SURVEYOR Stutzmann Engineering Associates P.O. Box 1429, Fairbanks, AK 99701
---	--

STATE OF ALASKA
DEPARTMENT OF NATURAL RESOURCES
DIVISION OF TECHNICAL SERVICES
ANCHORAGE, ALASKA

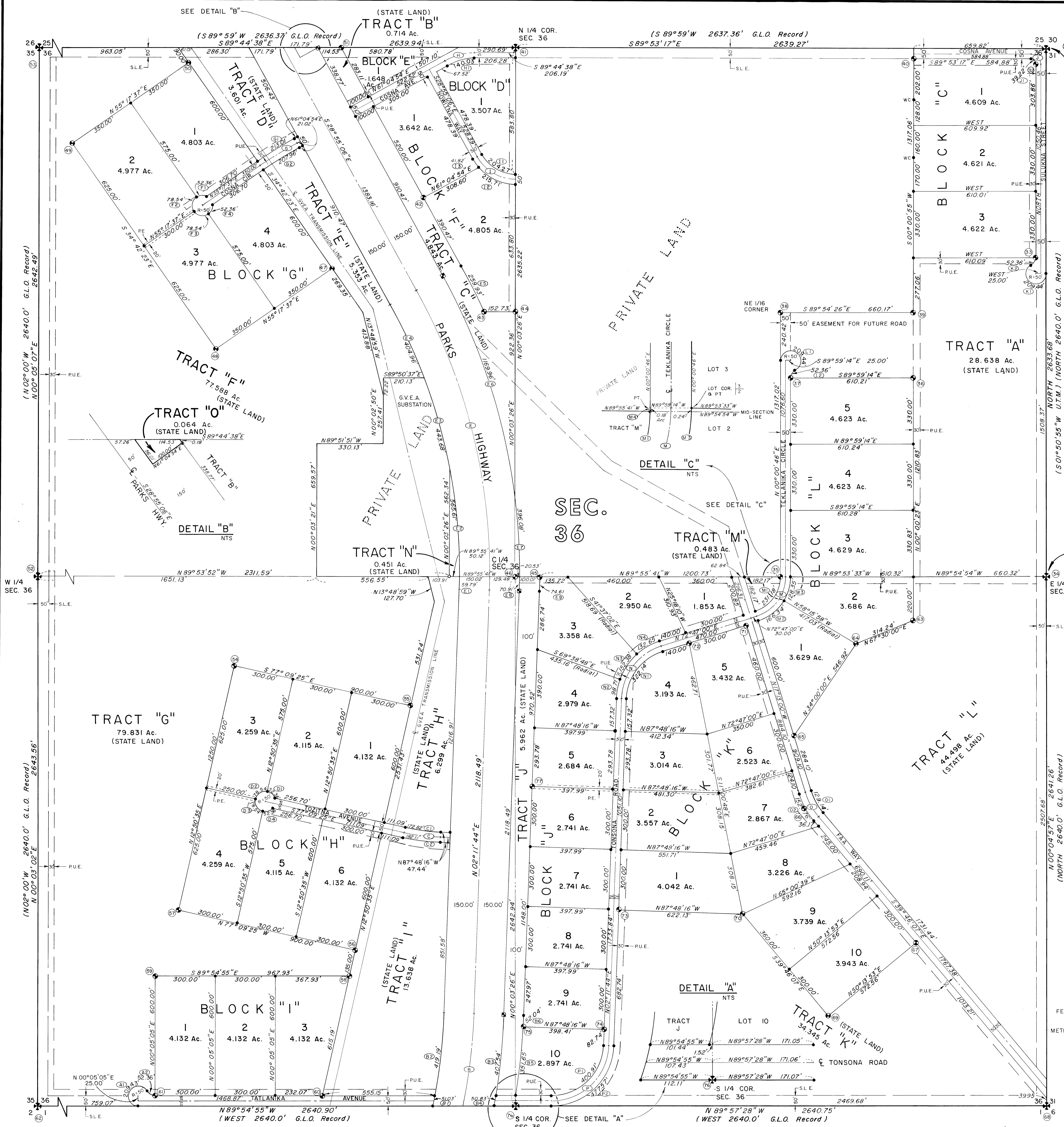
L.A.D.S. NO. 0153-81-1-3
ALASKA STATE LAND SURVEY NO. 80-106
WITHIN: SECTION 30 T 4 S, R 7 W,
SECTION 36 T 4 S, R 8 W,
FAIRBANKS MERIDIAN, ALASKA

DRAWN BY J. Keller	APPROVAL RECOMMENDED <i>[Signature]</i>
Date: Sept. 1980	Address: Alaska State Land Survey
SCALE: 1" = 200'	CHECKED: <i>[Signature]</i>
	FILE NO. 80-106

81-4
RECORDED - FILED
NENANA REC. DIST.
DATE: 4-13-81
TIME: 9:15 P.M.
Requested by: AS/DNR

81-1
RECORDED - FILED
NENANA REC. DIST.
DATE: 1-28-81
TIME: 11:45 A.M.
Requested by: AS/DNR

SHEET 2 OF 4



DECLINATION FROM U.S.G.S.
"Fairbanks C-5"
1950

BASIS OF COORDINATES

CM-HV-8 (IDENTICAL WITH SEC. COR. 24.30 36.51)
LAT. = 64° 31' 28.811" N
LONG. = 149° 02' 51.317" W
Y = 3,849,390.06
X = 649,971.12
ZONE 4, Feet
DELTA ALPHA = 0° 51' 36"
S.F. = 0.99992557

U.T.M. COORDINATES

N = 7,157,674.51
E = 401,765.18
ZONE 6, Meters
CONVERGENCE = -01° 50' 56"
S.F. = 0.99971815

COORDINATE DATA

1/4 COR. 36+31
LAT. = 64° 31' 28.811" N
LONG. = 149° 02' 51.317" W
Y = 3,847,356.87
X = 650,010.69
ZONE 4, Feet
DELTA ALPHA = 0° 51' 35"
S.F. = 0.99992556

U.T.M. COORDINATES

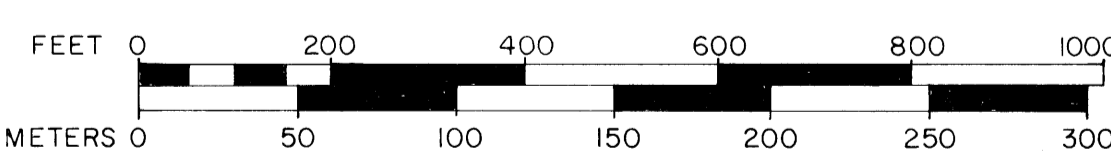
N = 7,156,872.409
E = 401,739.311
ZONE 6, Meters
CONVERGENCE = -01° 50' 55"
S.F. = 0.9997183

LEGEND

- ⊕ G.L.O. AND/OR B.L.M. MONUMENT RECOVERED
- ⊙ D.N.R. OFFICIAL OR PRIMARY BRASS CAP MONUMENT SET
- ⊙ D.N.R. OFFICIAL OR PRIMARY BRASS CAP MONUMENT RECOVERED
- COPPERWELD OR EQUIVALENT SECONDARY MONUMENT SET
- ⊙ 3/4" IRON PIPE SET
- ⊙ U.S.G.S., U.S.C.B.G.S., U.S.C.E. AND B.L.M. ET. POINTS
- ⊙ REBAR WITH CAP RECOVERED
- ⊙ STATE OF ALASKA D.O.T. R/W MONUMENT RECOVERED
- ⊙ MONUMENT AND BEARING TREE IDENTIFICATION NUMBER
- ⊙ STREET CENTERLINE CURVE DESIGNATIONS
- ⊙ LOT LINE CURVE DESIGNATIONS

AMENDED PLAT

SCALE: 1" = 200'



1 Meter = 3.280833 U.S. Survey Feet
1 U.S. Acre = 0.4047 Hectares

DATE OF SURVEY Beginning July, 1980 Ending Sept, 1980	NAME OF SURVEYOR Stutzmann Engineering Associates P.O. Box 1429, Fairbanks, Ak 99707
---	--

STATE OF ALASKA
DEPARTMENT OF NATURAL RESOURCES
DIVISION OF TECHNICAL SERVICES
ANCHORAGE, ALASKA
L.A.D.S. NO. 0153-81-1-3
ALASKA STATE LAND SURVEY NO. 80-106
WITHIN: SECTION 30 T.4S., R.7W.
SECTION 36 T.4S., R.8W.
FAIRBANKS MERIDIAN, ALASKA

DRAWN BY J. Keller Date Sept, 1980 SCALE: 1" = 200'	APPROVAL RECOMMENDED [Signature] Date CHECKED [Signature] FILE NO. 80-106
--	--

81-4
RECORDED - FILED
NENANA REC. DEPT.
DATE 4-13-81
TIME 9:13 A
ASIPUL

81-1
RECORDED - FILED
NENANA REC. DEPT.
DATE 1-28-81
TIME 11:45 A
Requested by AS/DNR
Address

BEARING TREE DATA

Table with columns: MON. NO., B.T. NO., DESCRIPTION, BEARING, DISTANCE. Lists tree locations and measurements for various plots.

CURVE TABLES

Table with columns: CURVE NO., LOCATION, DELTA, DEGREE, RADIUS, TANGENT, ARC, CHORD BEARING, CHORD. Contains data for SHEET 2 - SECTION 30 and SHEET 3 - SECTION 36.

NOTES

Notes regarding utility easements, monument types (Primary and Secondary Bearing Tree Tag), and ownership information.

Ownership Certificate section containing the signature of the Director and the undersigned.

Notary's Acknowledgement section with the notary's signature and commission expiration date.

Surveyor's Certificate section with the surveyor's signature and registration details.

Amended Plat section including selection information, state of Alaska seal, and recording details.