



Yakutat Community Update: The Icy Cape Gold and Industrial Heavy Minerals Project

April 5, 2023
6-7:30PM

The Team

Jusdi Warner: Executive Director, Trust Land Office

Dr. Karsten Eden: Chief Geologist, Trust Land Office

Allison Biastock: Chief Communications Officer, Trust Authority





Trust

Alaska Mental Health Trust Authority

It is the duty of the Alaska Mental Health Trust Authority to provide leadership in the advocacy, planning, implementing and funding of services and programs for Trust beneficiaries.

The Trust operates much like a private foundation, using its resources to fund system change, demonstration projects, funding partnerships, technical assistance and Trust-initiated projects.

The Trust is fully self-funded and is overseen by a seven-member board of trustees.

Trust Beneficiaries

Beneficiaries include Alaskans who experience:

- Mental illnesses
- Intellectual and developmental disabilities
- Alzheimer's disease and related dementias
- Traumatic brain injuries
- Substance use disorders

The Trust also works in prevention and early intervention services for individuals at risk of becoming beneficiaries.





The Work of the Trust

Advocating for and providing grants to programs and initiatives that serve Alaska's most vulnerable populations.

- Disability Justice
- Housing & Home and Community-Based Services
- Employment & Engagement
- Mental Health & Addiction Interventions
- Workforce Development
- Early Childhood Intervention and Prevention



Grant Making

Trust
Alaska Mental Health
Trust Authority

Trustees authorize around **\$20 million** in grants each year to nonprofits, service providers, state and local governments, and Tribal organizations.

Grants in Yakutat:

- Support for behavioral health services at the new Yakutat Community Health Center (Yakutat Tribal Health Board)
- Yakutat Tlingit Tribe Domestic Violence and Sexual Assault Shelter
- PPE for the City and Borough of Yakutat for COVID-19 response
- Behavioral health services and training for the Yakutat Tlingit Tribe

Learn more about our grants:
alaskamentalhealthtrust.org

The Trust Land Office (TLO)



The Trust Land Office (TLO) manages Alaska Mental Health Trust Authority lands to maximize revenues from those lands over time solely for the Trust and its beneficiaries. The revenue generated by the TLO is managed by the Trust to improve the lives and circumstances of Trust beneficiaries across Alaska.

The TLO protects & enhances the value of Alaska Mental Health Trust lands.



Trust Land Management Principles

- Maximize long-term revenue & productivity from Trust land
- Protect corpus
- Encourage diverse revenue-producing uses of Trust land
- Manage Trust land prudently, efficiently & with accountability to the Trust & its beneficiaries

Trust Lands Support Trust Beneficiaries


- TLO manages lands to maximize revenues over time
- Revenues support Trust's grantmaking and advocacy work on behalf of its beneficiaries
- In FY22 -170 grants totaling close to \$20M to partners across Alaska, including \$8M to State agencies.



Icy Cape

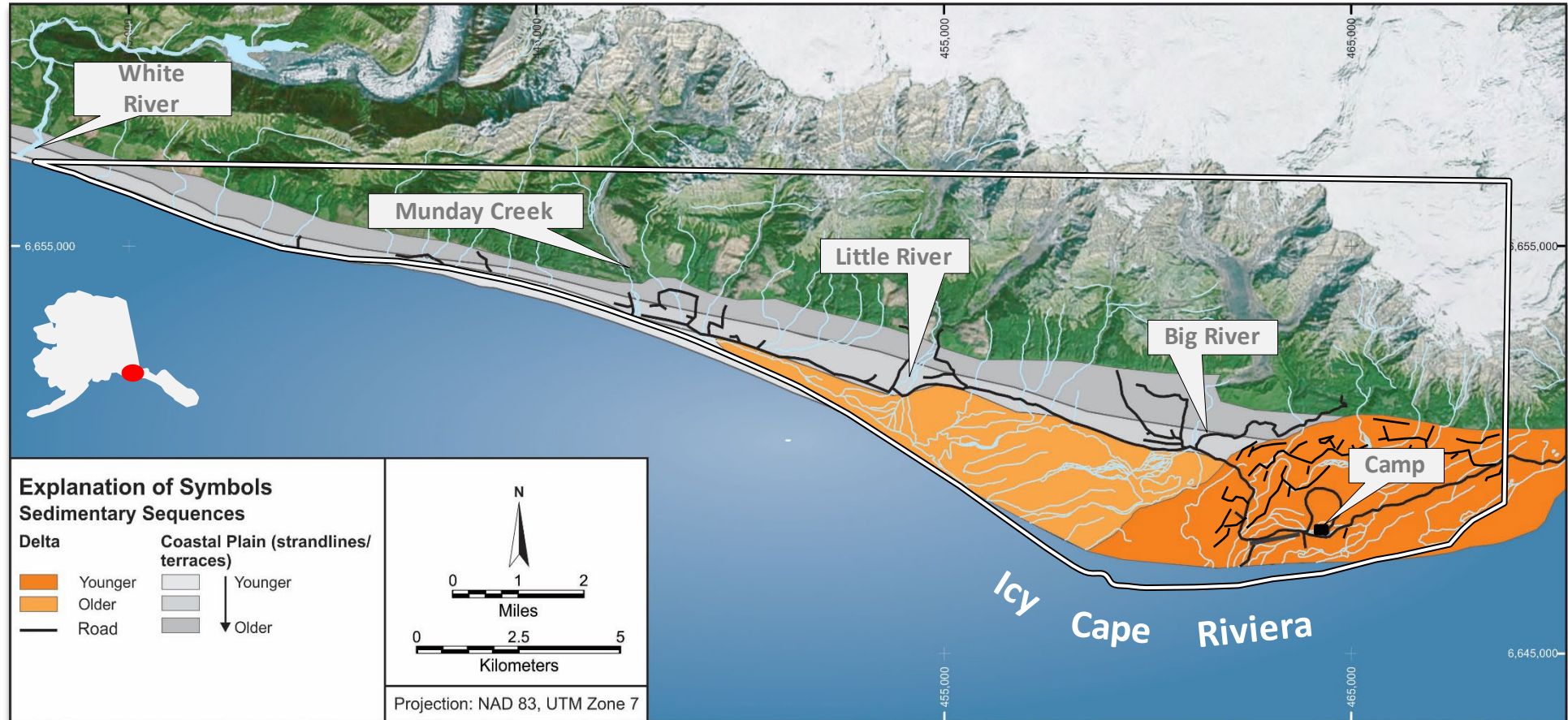


Mental Health
Trust Land
Near
Malaspina Glacier

 Mental Health
Trust Land



Setting



Milestones 2015 - 2020

- Aeromagnetic survey
- Drill target generation
- Stratigraphic framework and resource assessment drilling (13,000ft)
- Au and HM analyses
- First phase bulk sampling and industry testing HM concentrates
- Delineated four main large-volume prospects
- Resource estimates for main prospects
- Independent review and strategy study for the development of the Project. HATCH recommended resource definition drilling to upgrade the resource estimate of one prospect to the indicated category and to conduct a pre-feasibility study

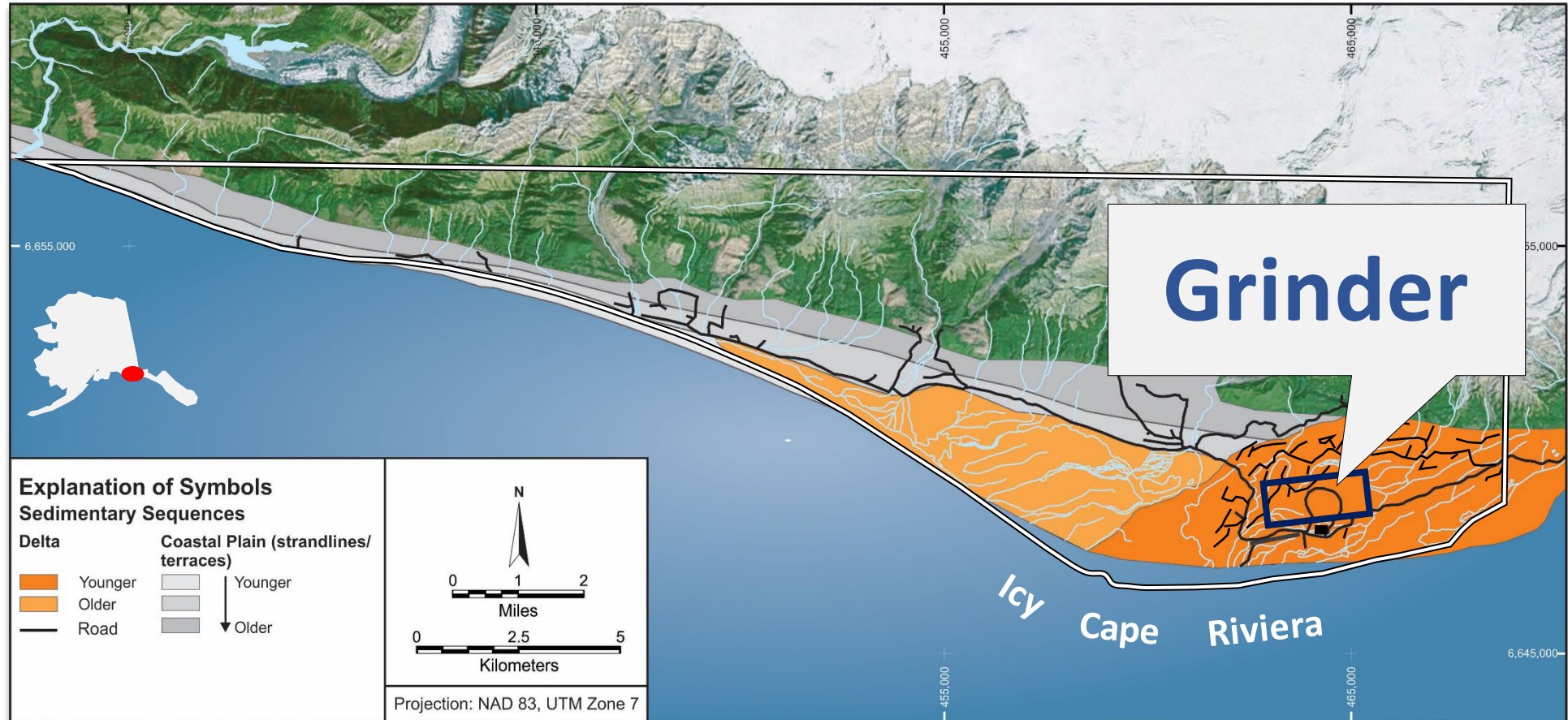


Milestones 2021 and 2022

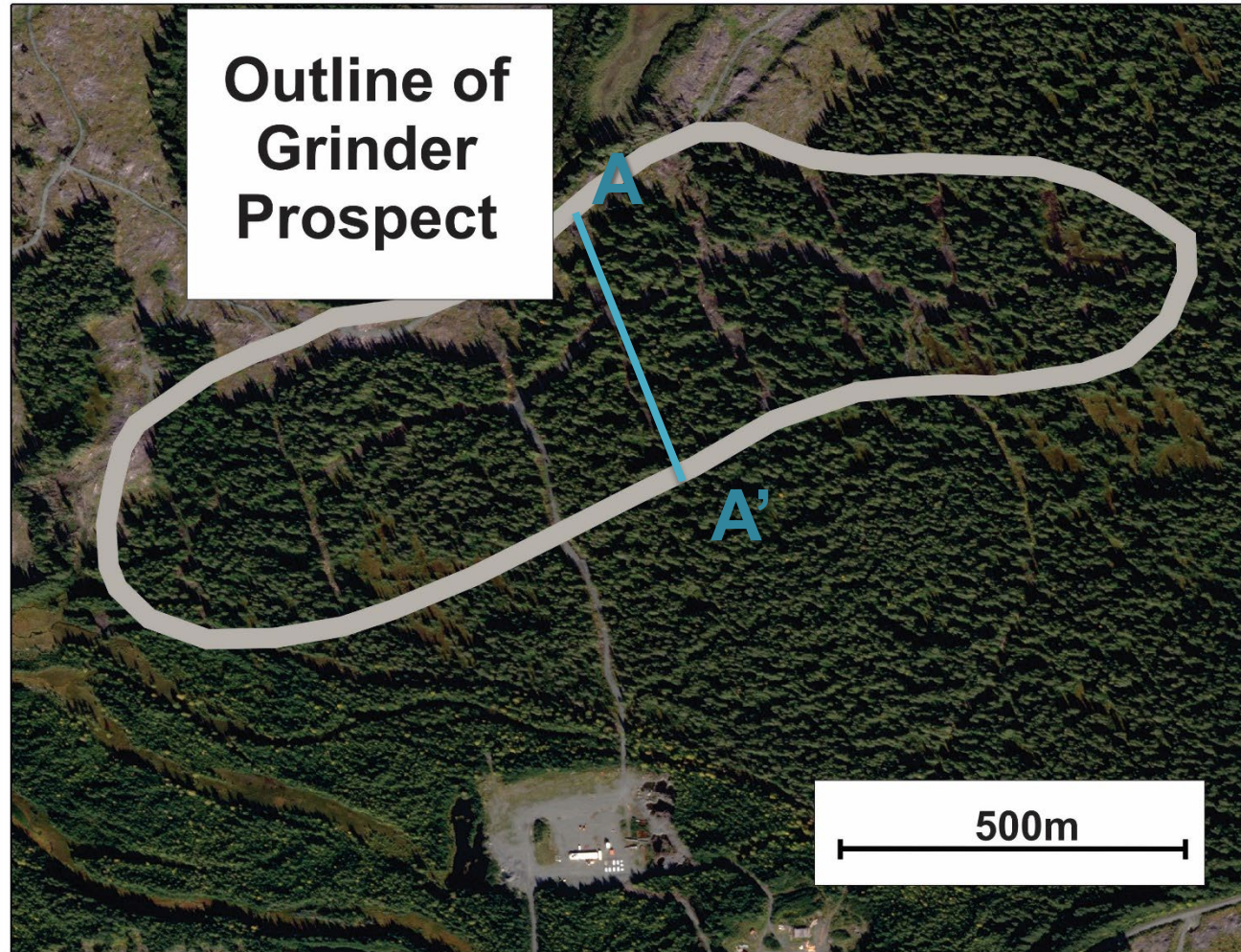
- Grinder was selected for resource definition drilling
- High resolution airborne gradient magnetic survey and 3D inversion
- New 24-person camp and second sample processing laboratory facility with state-of-the-art core-sample processing equipment
- Resource definition drilling (>10,000ft)
- Drill core/sample processing and Au and HM analyses



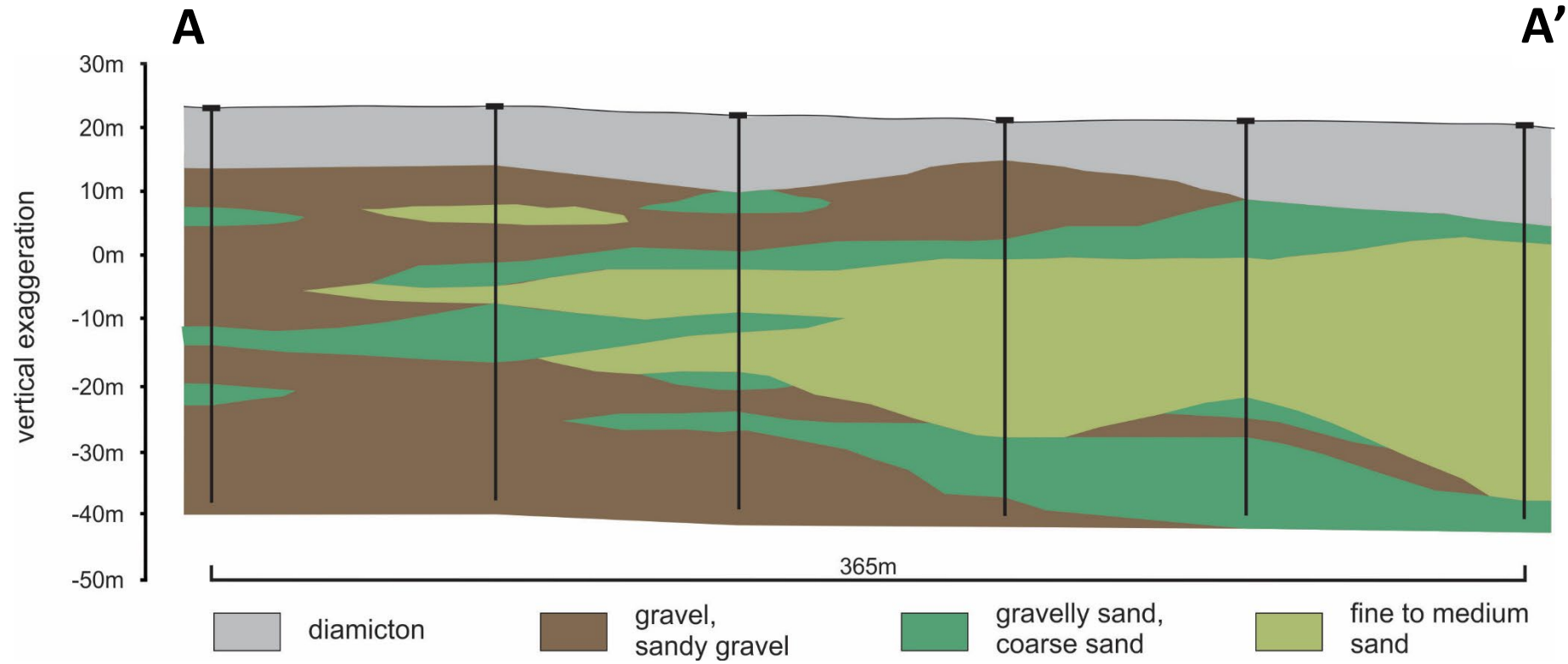
Grinder Location



Grinder Prospect



Grinder Section



New camp



Sonic Drill Rig



Sample processing



Sample processing



Sample processing



What's Next for Icy Cape?

- Continue resource definition drilling at Grinder Prospect
- Drill core/sample processing and Au and HM analyses
- Bulk sampling
- Metallurgical testing/industrial processing trials
- Material testing of mineral products
- Anticipate 24 people in camp in the summer of 2023



Environmental Impact

- Acquiring all required permits
- Following all pertinent state & federal regulations
- Maintaining long-term stewardship



Economic Opportunity

- Air service
- Supplies
- Room & board





Thank You

Questions?

Visit us at:

alaskamentalthtrust.org/icyscape