

U. S. SURVEY  
No. 4651, ALASKA

EMBRACING  
LOTS 1 THROUGH 12

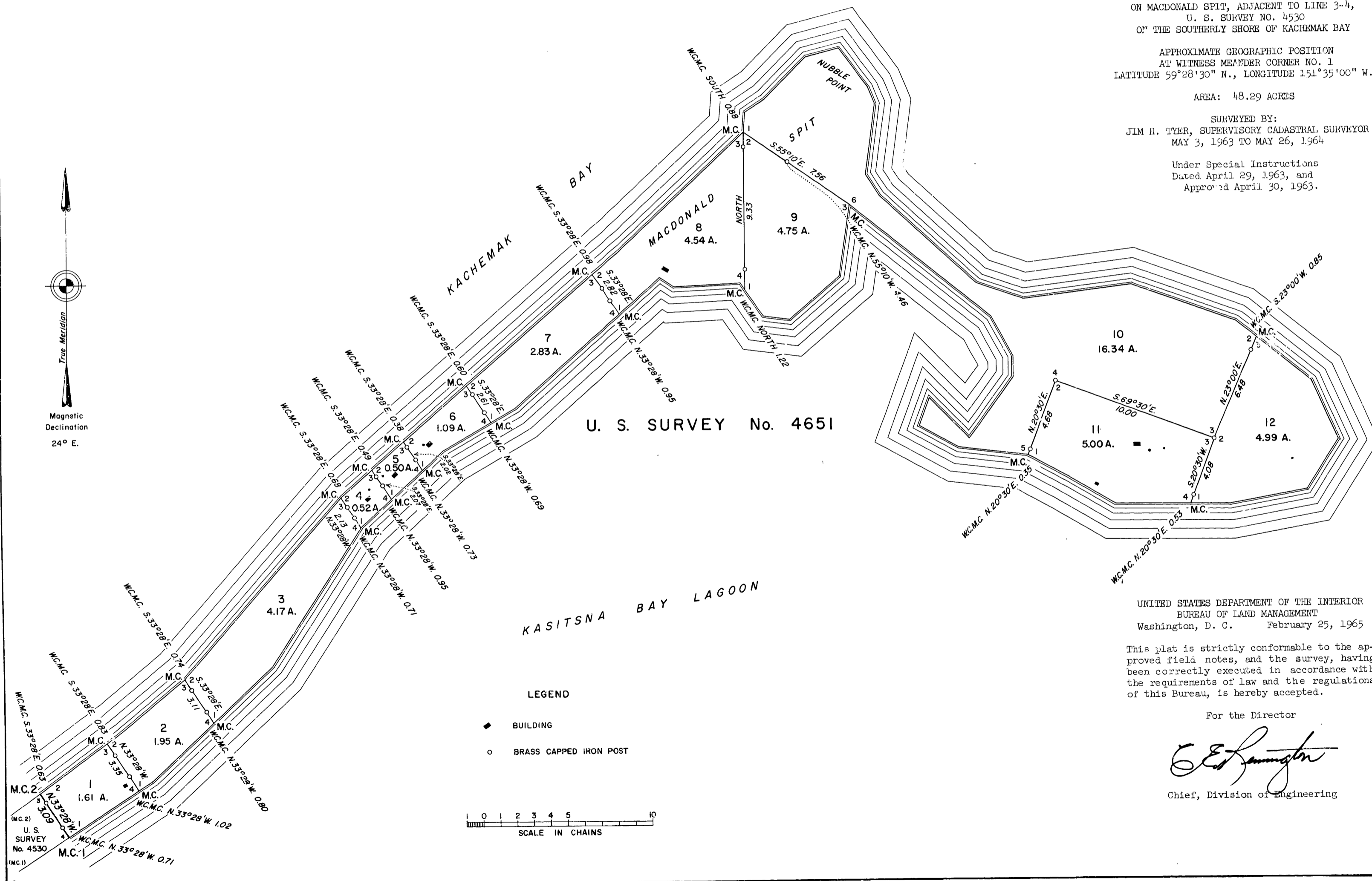
SITUATED  
ON MACDONALD SPIT, ADJACENT TO LINE 3-4,  
U. S. SURVEY NO. 4530  
OF THE SOUTHERLY SHORE OF KACHEMAK BAY

APPROXIMATE GEOGRAPHIC POSITION  
AT WITNESS MEANDER CORNER NO. 1  
LATITUDE 59°28'30" N., LONGITUDE 151°35'00" W.

AREA: 48.29 ACRES

SURVEYED BY:  
JIM H. TYER, SUPERVISORY CADASTRAL SURVEYOR  
MAY 3, 1963 TO MAY 26, 1964

Under Special Instructions  
Dated April 29, 1963, and  
Approved April 30, 1963.



U. S. SURVEY No. 4651

LEGEND

- ◆ BUILDING
- BRASS CAPPED IRON POST

SCALE IN CHAINS

0 1 2 3 4 5 10

UNITED STATES DEPARTMENT OF THE INTERIOR  
BUREAU OF LAND MANAGEMENT  
Washington, D. C. February 25, 1965

This plat is strictly conformable to the approved field notes, and the survey, having been correctly executed in accordance with the requirements of law and the regulations of this Bureau, is hereby accepted.

For the Director  
*CE Livingston*  
Chief, Division of Engineering