

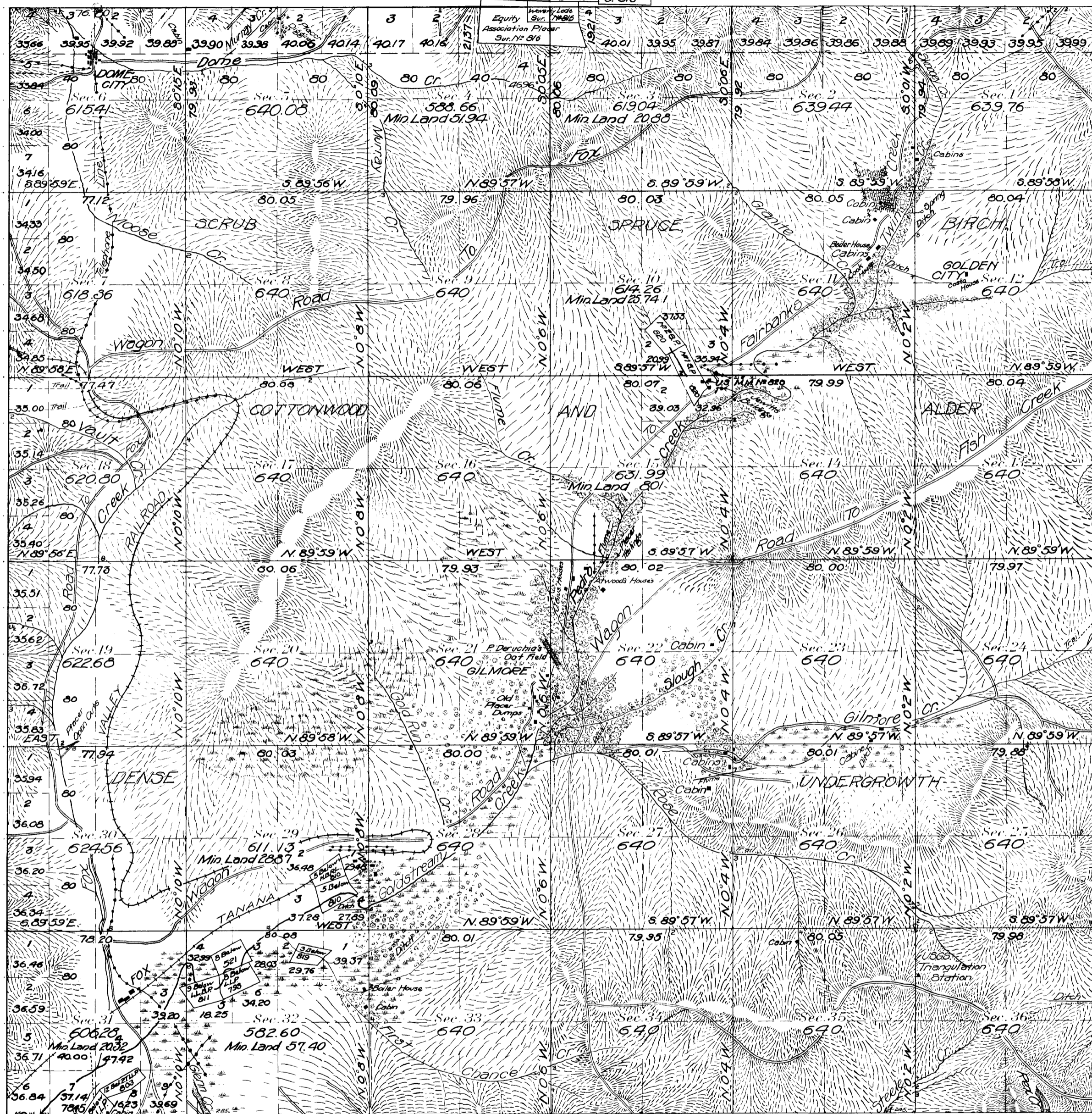
(4-675a)

Township No 2 North Range No 1 East of the Fairbanks Meridian, Alaska

G F E D C B A

S. 89° 59' W.

La Place 5.816	Mid Res 8.816	800 6.816	Waterbury 6.816	Cornation 8.816
-------------------	------------------	--------------	--------------------	--------------------



APPROVED MINERAL CLAIMS			
Surf No	Names	Areas	Remarks
	T. 2 N.		R. 1 E.
521	8 Below P.	15.682	In Sec. 32
793	8 Below LLP.	15.974	" " 32
803	12 Below TLLP.	10.665	" " 31
803	13 Below TLLP.	16.101	" " 31 and Tps.
810	5 Below RLP.	11.427	" " 29
810	5 Below P.	17.442	" " 29
811	9 Below LLP.	15.670	" Secs. 31 and 32
816	Waverly L.	20.392	" " 31 and 32
816	Equity P.	64.485	" " 31 and 32
819	3 Below P.	10.869	" Sec. 32
820	2 Steamboat PP.	14.593	" " 10
820	1 Steamboat PP.	19.162	" Secs. 10 and 15
		232.462	

Areas in Acres	
Public Land	22715.05
Indian Reservation	
Indian Allotments	
Mineral Claims	213.16
Water Surface	
<b>Total Area</b>	<b>22928.21</b>

Latitude 64° 57' 00.5" N.  
Longitude 146° 25' 21" W.  
Scale 40 Chains to an inch  
Mean Magnetic Declination - 31° 15' E.

Surveys Designated	By Whom Surveyed	Contract No.	Contract Date	Amount of Surveys			When Surveyed	
				Mls.	chs.	fks.	Begun	Completed
Subdivisions	Victor H. Wilhelm			59	68	75	June 27, 1912	July 30, 1912
E and N Boundaries	W.H. Thorn			11	76	80	June 27, 1912	July 9, 1912
W. Boundary	S.G. Lunde			6	00	00	Aug. 9, 1910	Sept. 2, 1910
South " "	W.N. Vance			5	78	45	Sept. 5, 1910	Sept. 14, 1910.

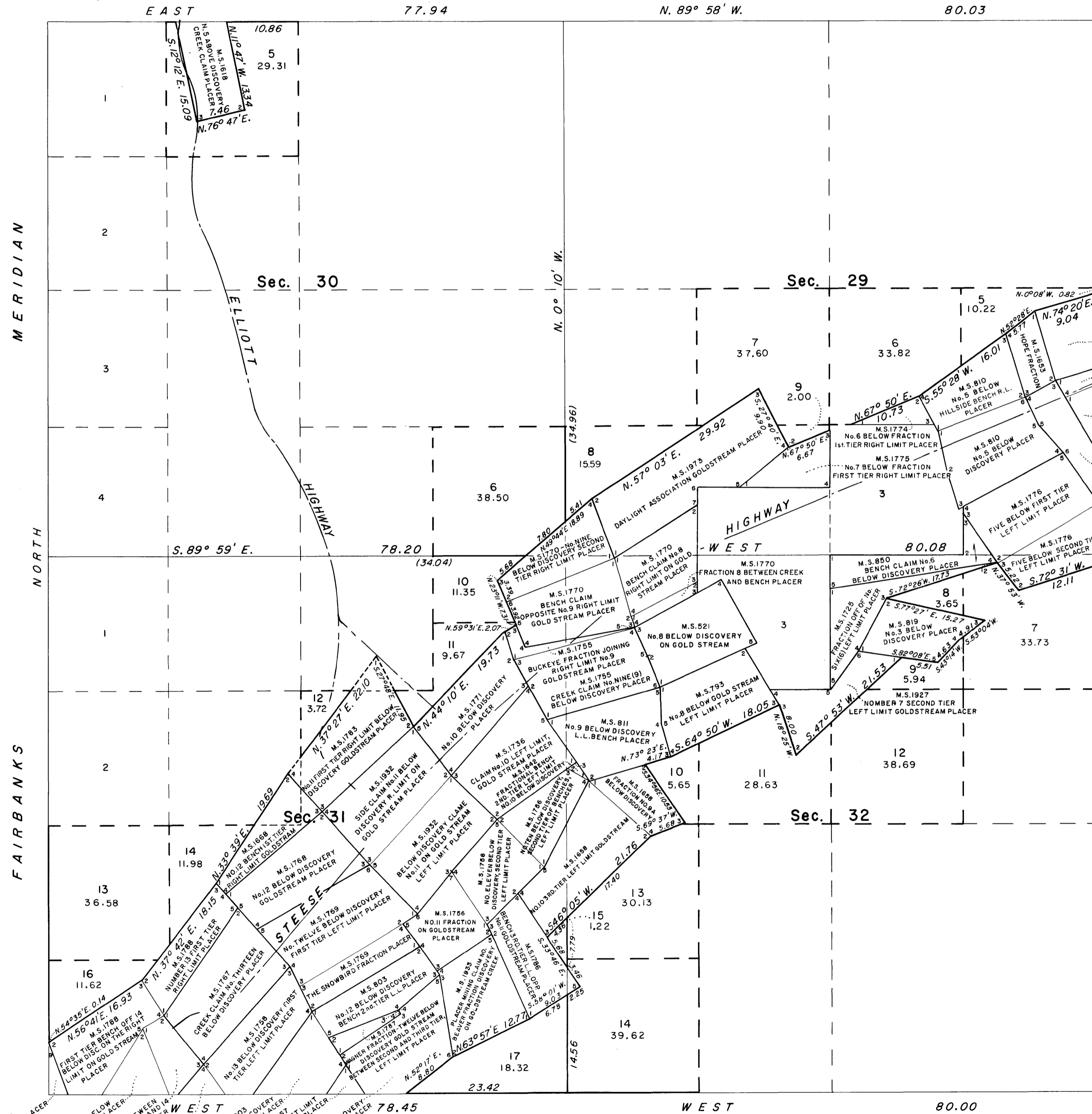
The above map of Township No 2 North Range No 1 East of the Fairbanks Meridian Alaska is strictly conformable to the field notes of the survey thereof on file in this office, which have been examined and approved

U. S. Surveyor General's Office.  
Juneau, Alaska, February 28, 1914.

Charles E. Davidson  
Surveyor General.

# TOWNSHIP 2 NORTH, RANGE 1 EAST, OF THE FAIRBANKS MERIDIAN, ALASKA

## SUPPLEMENTAL PLAT OF SECTIONS 29, 30, 31, 32



This supplemental plat of sections 29, 30, 31, and 32, of T. 2 N., R. 1 E., Fairbanks Meridian, Alaska, showing amended lottings resulting from the segregation of mineral surveys, is based on plat approved February 28, 1914.

UNITED STATES DEPARTMENT OF THE INTERIOR  
BUREAU OF LAND MANAGEMENT  
Washington, D. C. October 20, 1970

This plat, showing amended lottings, is based upon the official records, and having been correctly prepared in accordance with the regulations, is hereby accepted.

For the Director

*Clark J. Summ*

Chief, Division of Cadastral Survey

