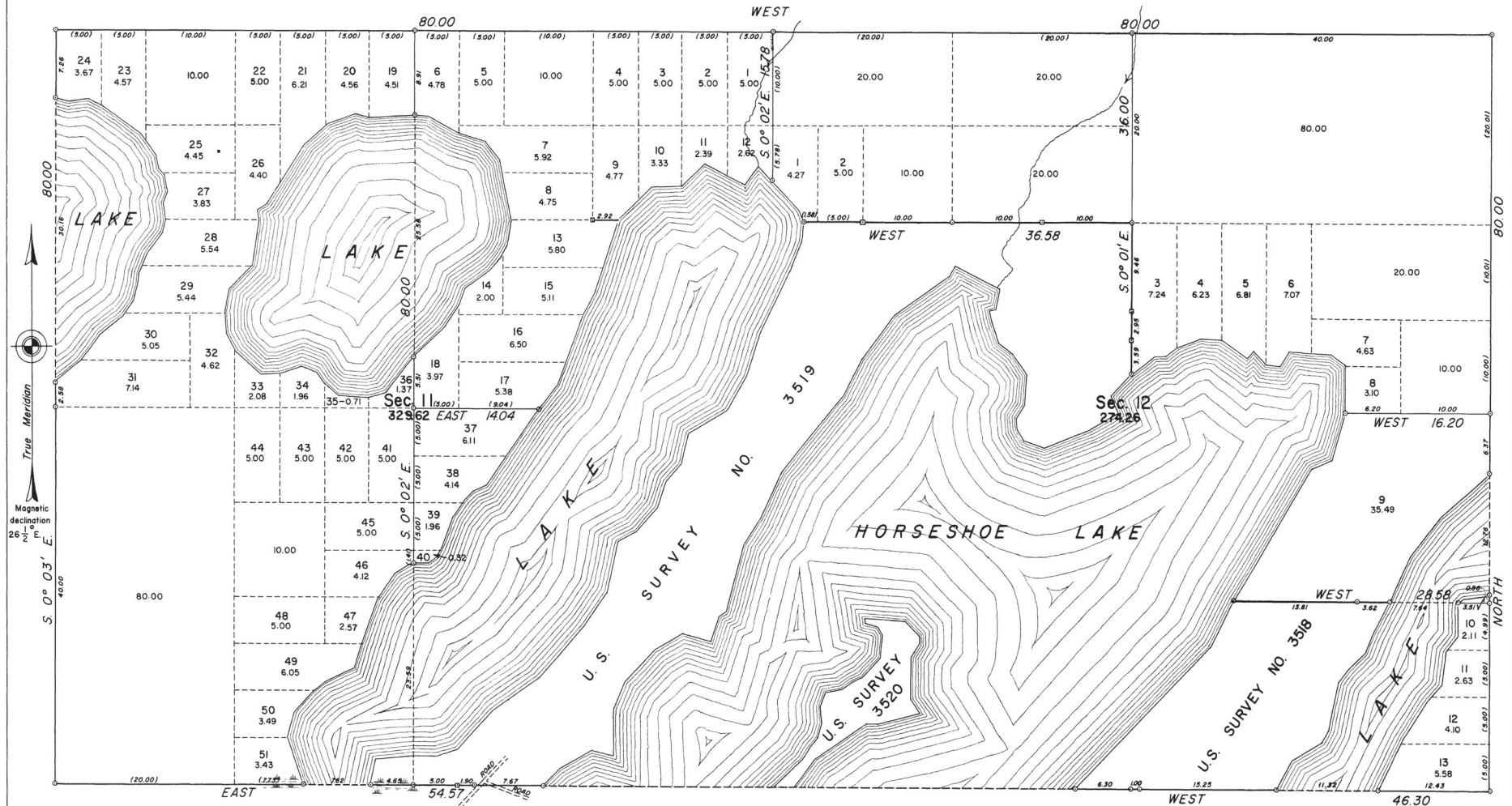


TOWNSHIP 17 NORTH, RANGE 4 WEST, OF THE SEWARD MERIDIAN, ALASKA



This plat represents a portion of the extension survey, the dependent resurvey of a portion of the East boundary of the township and the partial subdivision of secs. 11 and 12, executed by Hobart B. Hyatt, Cartographer (Cadastral), during the period August 15, 1955 to April 17, 1957, under Special Instructions for Group No. 75, Alaska, dated July 15, 1949.

U. S. Survey Nos. 3518, 3519, and 3520 were executed concurrently with the establishment of the rectangular surveys in secs. 11 and 12. The previous surveys in this township are shown upon the plats accepted March 27, 1952.



- INDICATES AN IRON POST WITH BRASS CAP
- INDICATES A WOODEN POST

Area Surveyed 603.88 Acres

UNITED STATES DEPARTMENT OF THE INTERIOR
BUREAU OF LAND MANAGEMENT
Washington, D. C. January 19, 1959

This plat is strictly conformable to the approved field notes, and the survey, having been correctly executed in accordance with the requirements of law and the regulations of this Bureau, is hereby accepted.

For the Director

Earl G. Harvington
Cadastral Engineering Staff Officer

Latitude 61°34' N.
Longitude 149°54' 1/2 W