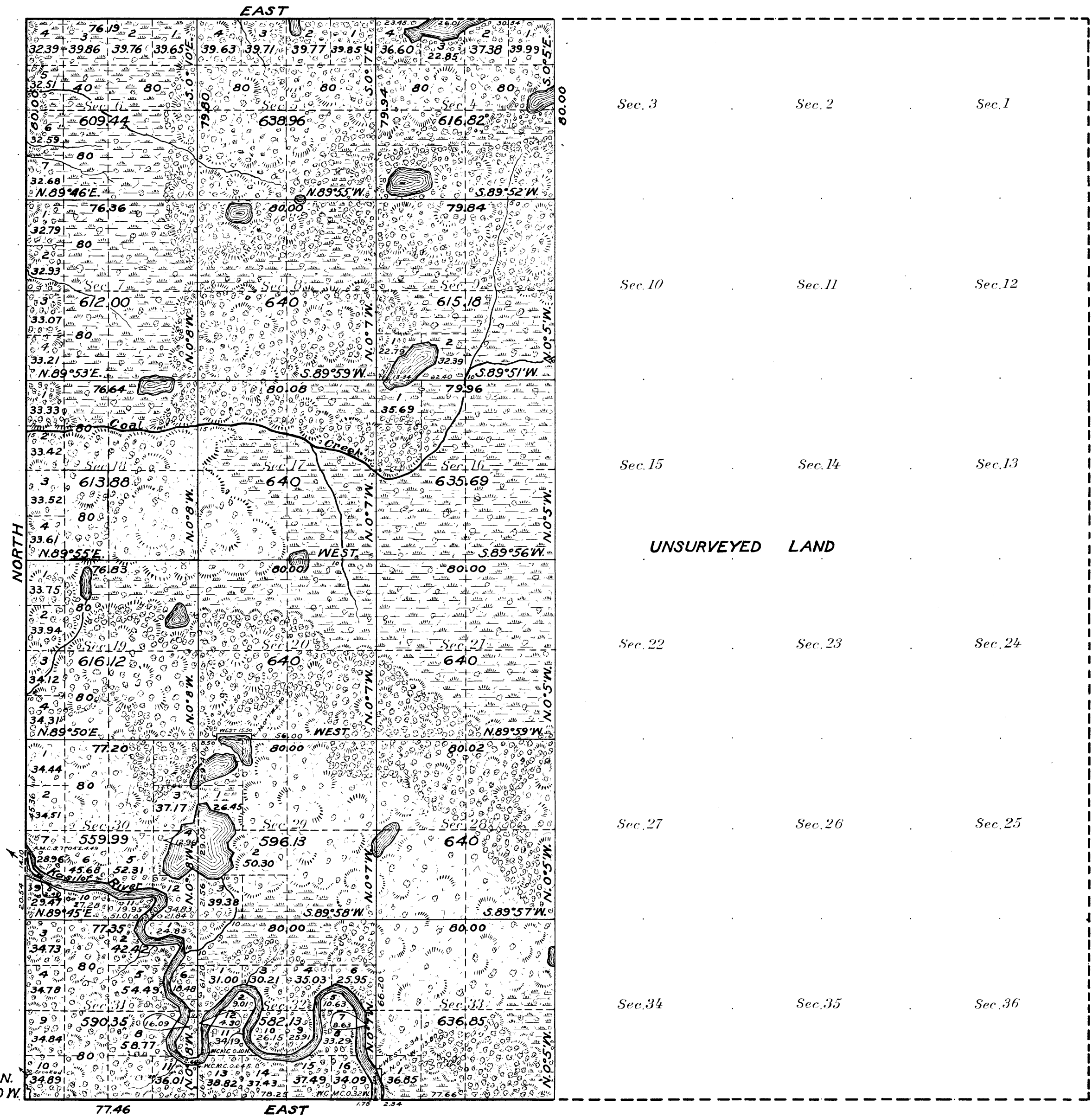


Township No. 3 North, Range No. 11 West of the Seward Meridian, Alaska.



Lat. 60°17'50"N.
Long. 151°16'30"W.

Areas in Acres	
Public Land	11123.54
Indian Reservation	
Indian Allotments	
Mineral Claims	
Water Surface	244.06
Total Area	11367.60

Scale 40 Chains to an inch
Mean Magnetic Declination 24°15'E.

Surveys Designated	By Whom Surveyed	No.	Group Date	Amount of Surveys			When Surveyed	
				Mls.	chs.	lks.	Begun	Completed
South Boundary	Otis Ross, U.S.S.	18	April 30, 1920	2	77	46	July 8, 1920	July 14, 1920
West Boundary	"	"	"	6	00	00	June 11, 1920	Aug. 17, 1920
North Boundary	"	"	"	2	76	19	Aug. 26, 1920	Aug. 27, 1920
Subdivisional Lines	"	"	"	32	64	02	July 9, 1920	Aug. 24, 1920
Meaders	"	"	"	12	70	71	July 10, 1920	July 20, 1920
Connections	"	"	"	0	04	49	Aug. 2, 1920	Aug. 2, 1920

The above map of Township No. 3 North Range No. 11 West of the Seward Meridian Alaska is strictly conformable to the field notes of the survey thereof on file in this office, which have been examined and approved

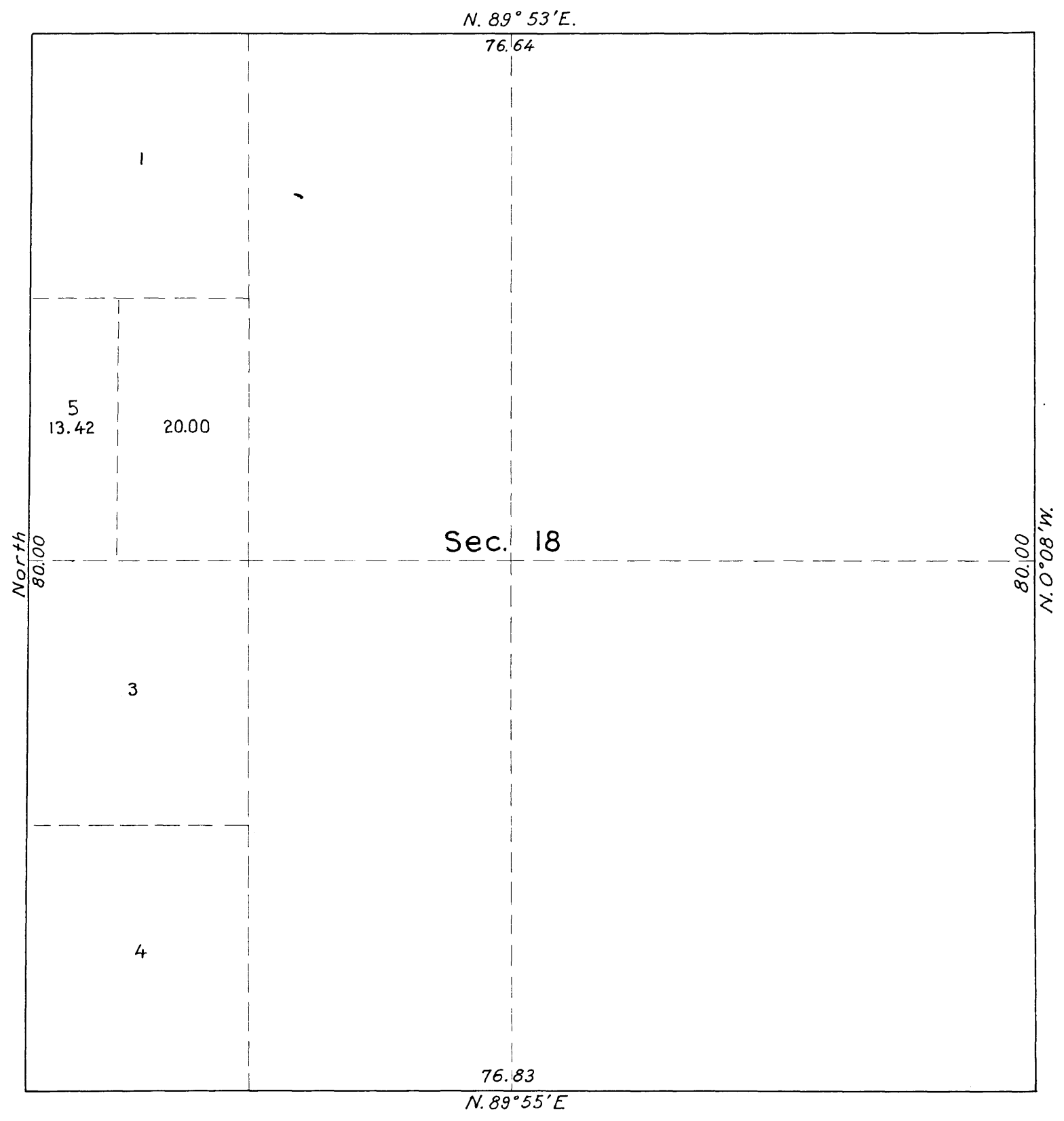
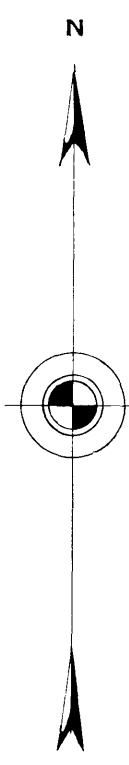
U. S. Surveyor General's Office.
Juneau, Alaska, May 23, 1921.

R. J. Dommer
Surveyor General.

TOWNSHIP No. 3 NORTH, RANGE No. 11 WEST SEWARD MERIDIAN, ALASKA

SUPPLEMENTAL PLAT OF SECTION 18

Scale: 10 chains = 1 inch



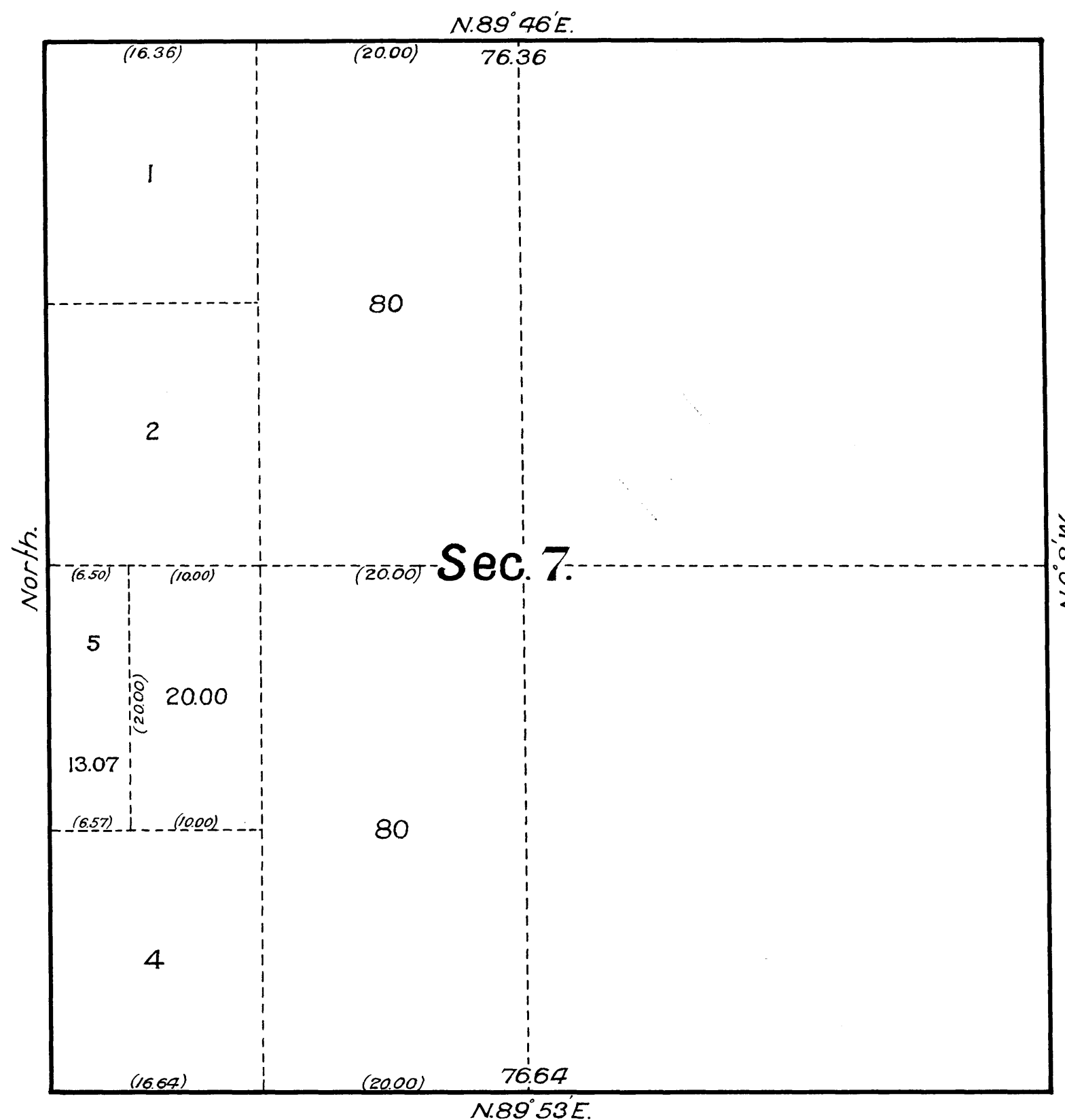
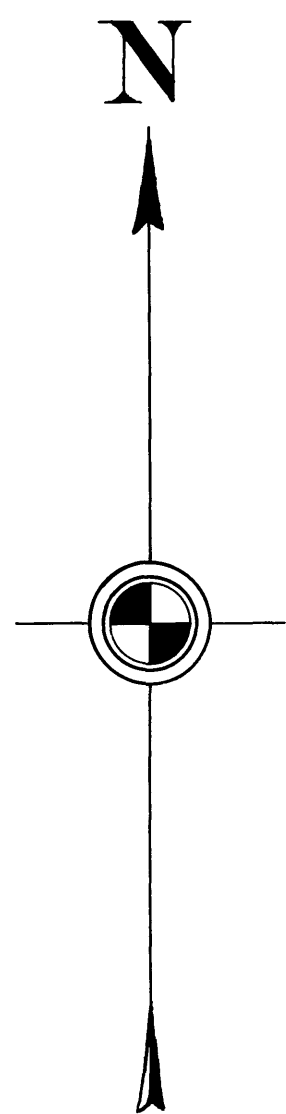
Department of the Interior
 General Land Office
 Washington, D.C., April 9, 1929.

This supplemental plat of Sec. 18, Township No. 3 North, Range No. 11 West, of the Seward Meridian, Alaska, based upon the plat approved May 23, 1921, showing a subdivision of original lot 2, to accommodate forest homestead Anchorage 05470, having been correctly prepared in accordance with the regulations of this office, is hereby approved.

Wm. C. Havell
 Assistant Commissioner.

Supplemental Plat of Section 7.
Township No. 3 North, Range No. 11 West of the Seward Meridian, Alaska.

Scale : 10 Chains = 1 inch



PUBLIC SURVEY OFFICE

Juneau, Alaska, October 7, 1931.

This supplemental plat of Section 7, Township 3 North, Range 11 West of the Seward Meridian, Alaska, based on plat of survey approved May 23, 1921, shows the subdivision by protraction of Lot 3 and the new lot and legal subdivision created thereby; said plat having been prepared in accordance with Commissioner's letter "E" dated September 14, 1931, for the purpose of accommodating Homestead Entry Anchorage 06373, of Allen H. Hardy, and the same is hereby approved.

E. Quinn
 Cadetful Engineer in Charge.

DEPARTMENT OF THE INTERIOR
 GENERAL LAND OFFICE

Washington, D. C., October 21, 1931.

The amended lottings represented by this supplemental plat having been correctly made in accordance with the regulations of this office, the plat is hereby accepted.

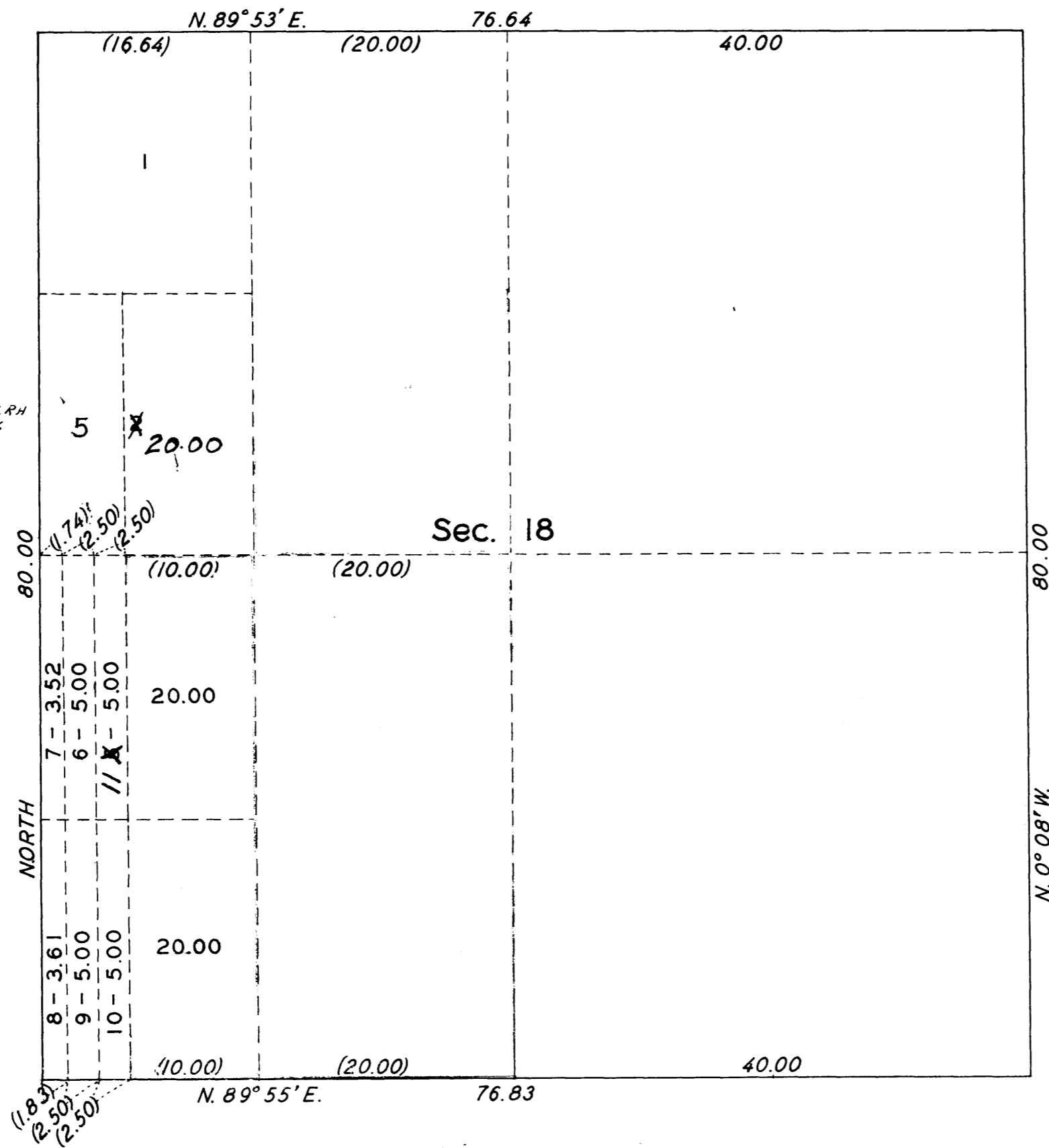
D. H. Parrott
 Acting Assistant Commissioner.

J. R. H.
 30

TOWNSHIP NO. 3 NORTH, RANGE NO. 11 WEST OF THE SEWARD MERIDIAN, ALASKA

SUPPLEMENTAL PLAT OF SECTION 18

SCALE: 10 CHAINS TO AN INCH



See Commissioners letter, Anch. 07345 E. L.R.H. Aug. 11, 1936

DEPARTMENT OF THE INTERIOR
GENERAL LAND OFFICE
WASHINGTON, D. C., MARCH 19, 1936.

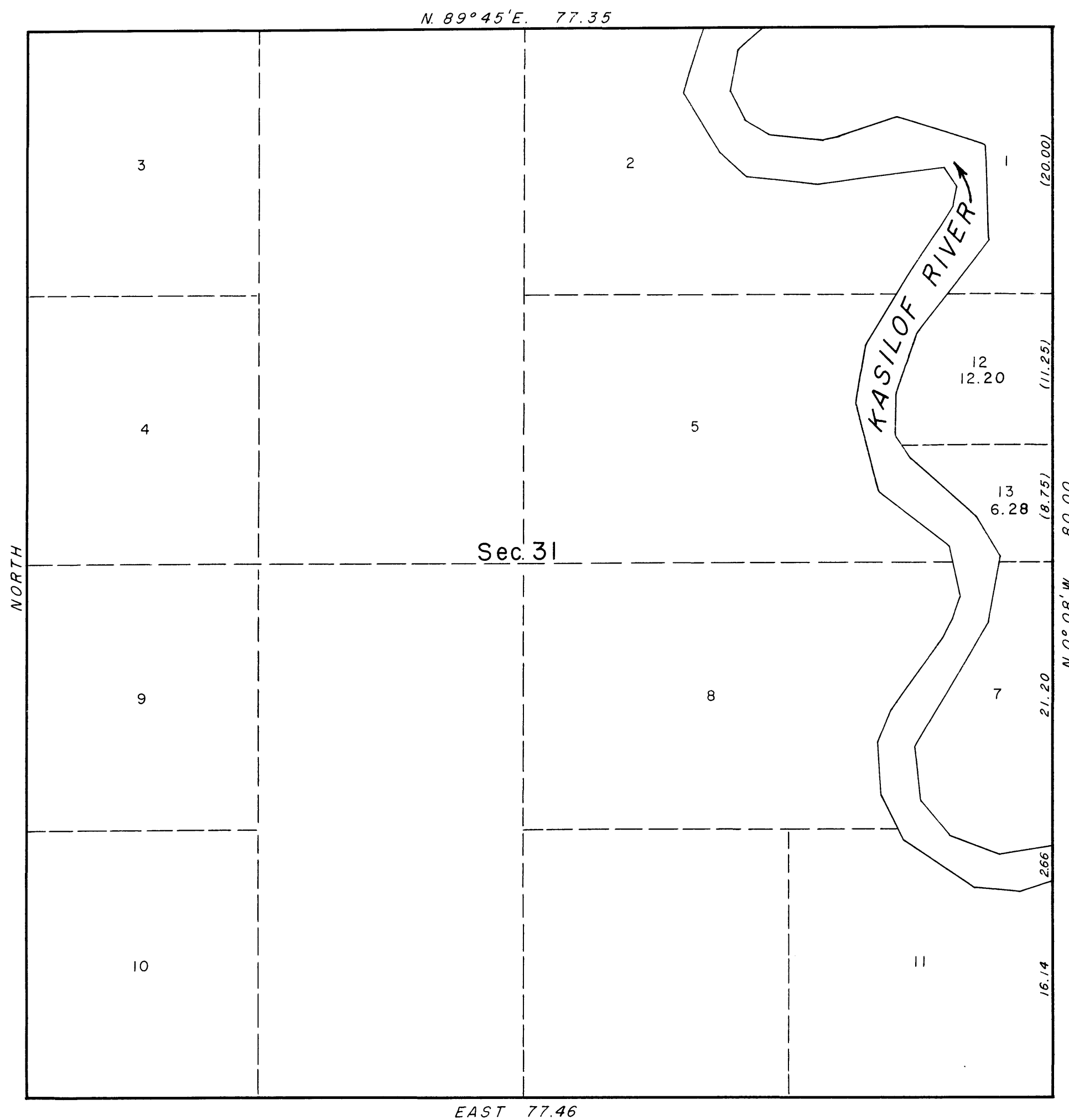
THE ABOVE SUPPLEMENTAL PLAT OF SECTION 18, TOWNSHIP NO. 3 NORTH, RANGE NO. 11 WEST, OF THE SEWARD MERIDIAN, ALASKA, BASED UPON THE PLAT APPROVED MAY 23, 1921, SHOWING A SUBDIVISION OF ORIGINAL LOTS 3 AND 4, TO ACCOMMODATE FOREST HOME-STEAD ENTRY ANCHORAGE 07345, HAVING BEEN CORRECTLY PREPARED IN ACCORDANCE WITH THE REGULATIONS OF THIS OFFICE, IS HEREBY APPROVED.

Antoinette Frank

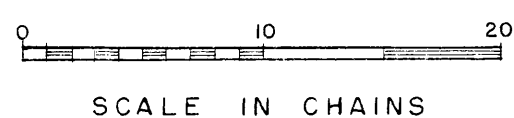
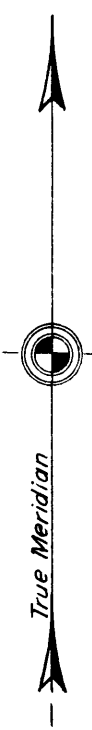
ASSISTANT COMMISSIONER.

TOWNSHIP 3 NORTH, RANGE II WEST OF THE SEWARD MERIDIAN, ALASKA

SUPPLEMENTAL PLAT OF SECTION 31



This supplemental plat showing a subdivision of original Lot 6 is based upon the plat approved May 23, 1921

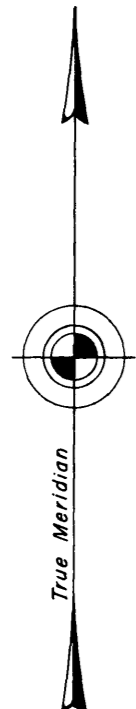
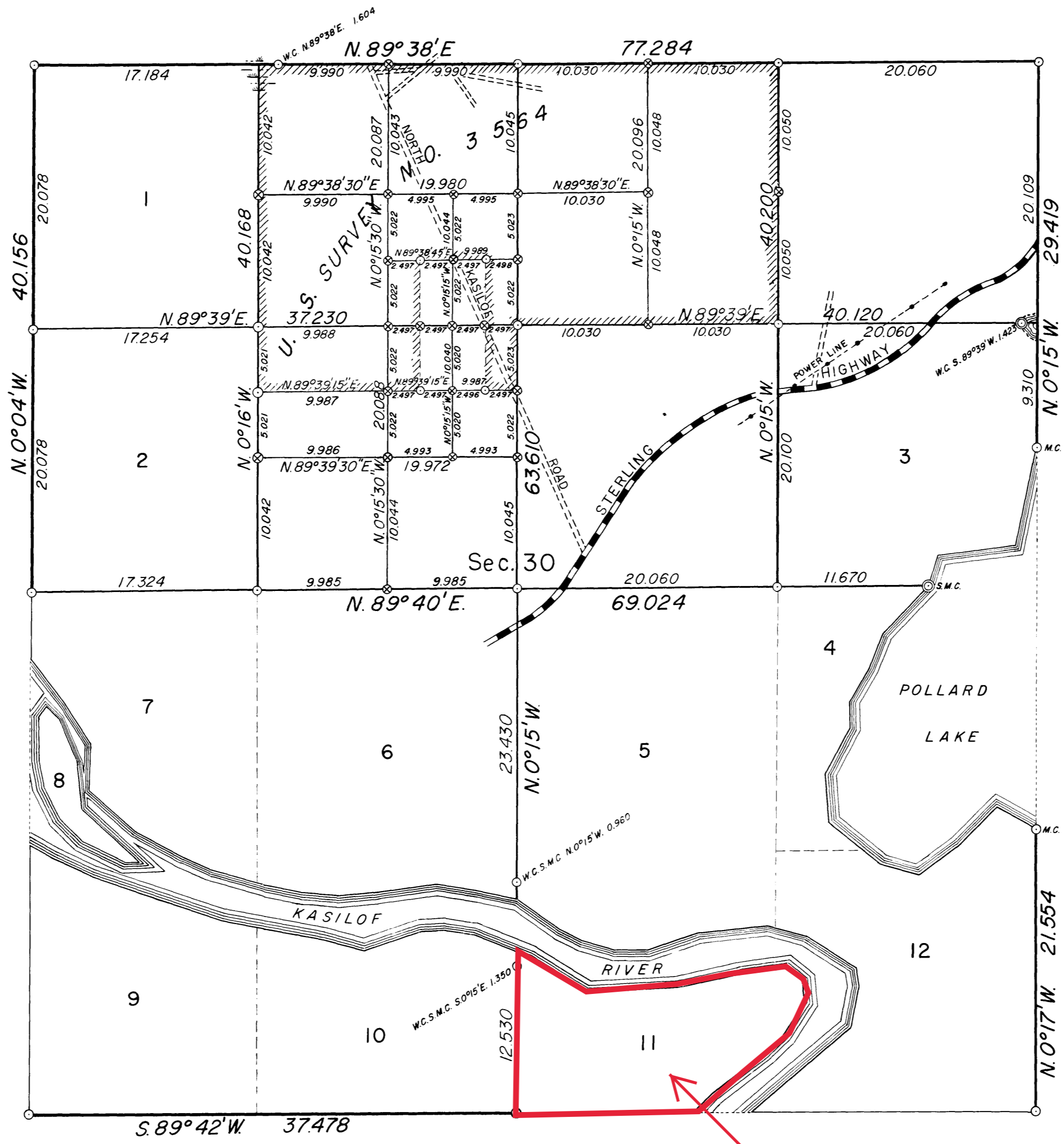


UNITED STATES
DEPARTMENT OF THE INTERIOR
BUREAU OF LAND MANAGEMENT
Washington, D. C., March 18, 1953

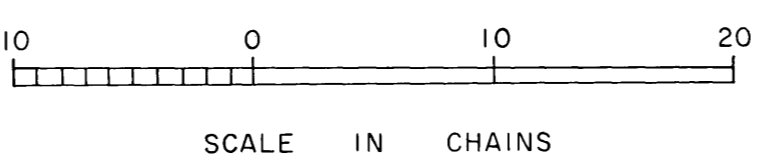
This plat showing amended lottings, having been correctly prepared in accordance with the regulations, is hereby accepted.

For the Director
Donald Clement
Assistant Chief, Division of
Cadastral Engineering

TOWNSHIP 3 NORTH, RANGE 11 WEST OF THE SEWARD MERIDIAN, ALASKA
DEPENDENT RESURVEY AND SUBDIVISION OF SECTION 30



Mean Magnetic Declination
25° E.



LEGEND

- IRON POST
- ⊗ BATHEY MONUMENT
- ⊙ BRASS TABLET

This plat represents the subdivisional survey of section 30, T. 3 N., R. 11 W., Seward Meridian, Alaska, as executed by Harold Radcliffe, Cadastral Surveyor, during the period July 15 to August 29, 1958, under Special Instructions for the establishment of the boundaries of the Townsite of Kasilof, U. S. Survey No. 3564, Alaska, dated July 7, 1958.

Previous surveys in this township are shown upon the plat accepted January 6, 1922.

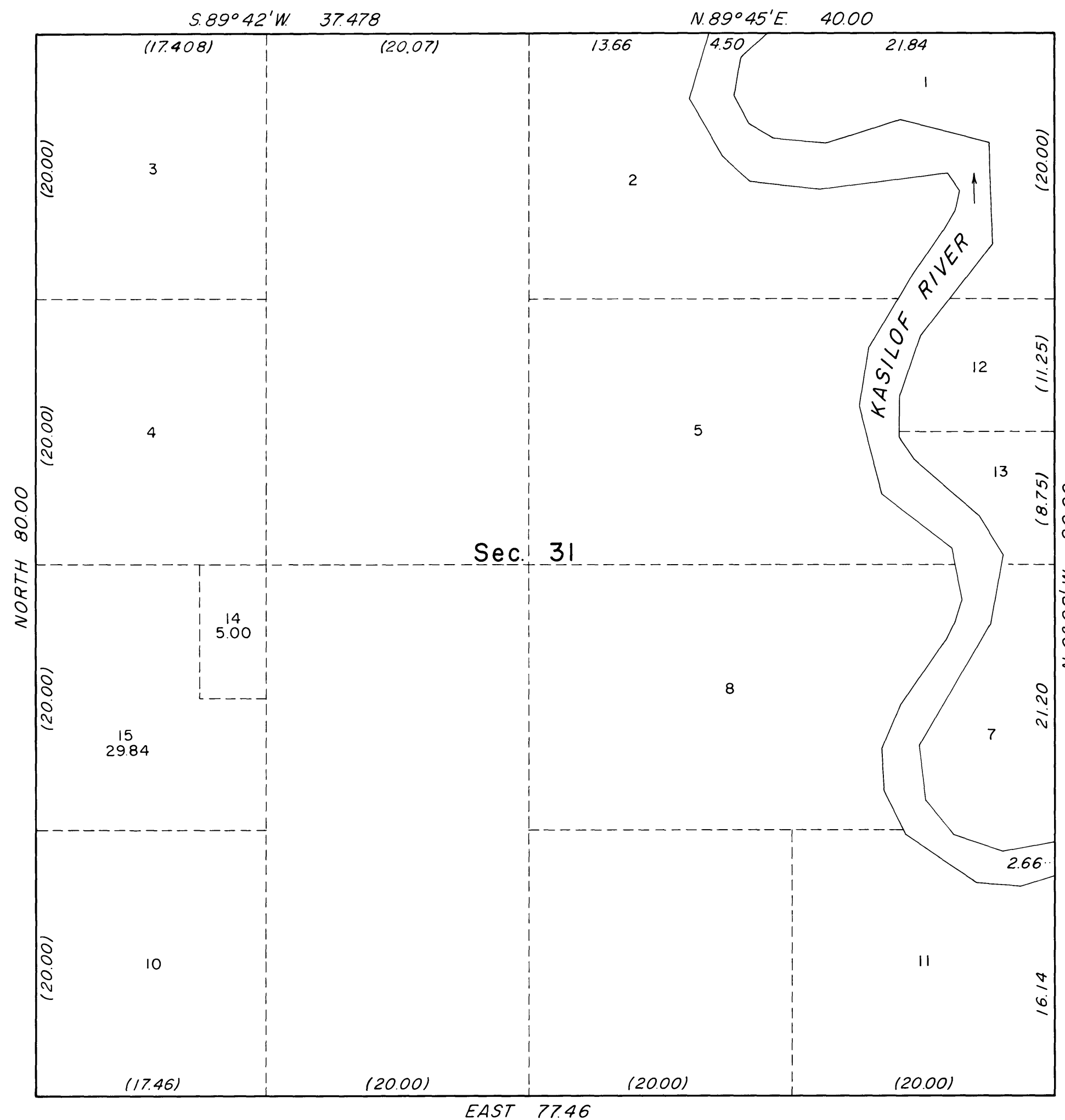
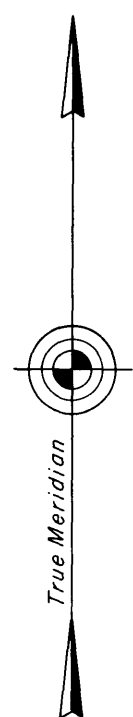
UNITED STATES DEPARTMENT OF THE INTERIOR
BUREAU OF LAND MANAGEMENT
Washington, D. C. July 27, 1960

This plat is strictly conformable to the approved field notes, and the survey, having been correctly executed in accordance with the requirements of law and the regulations of this Bureau, is hereby accepted.

For the Director

Cadastral Engineering Staff Officer

TOWNSHIP 3 NORTH, RANGE II WEST, OF THE SEWARD MERIDIAN, ALASKA
 SUPPLEMENTAL PLAT OF SECTION 31



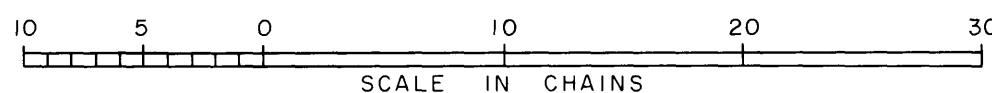
This supplemental plat of section 31, shows amended lottings in original lot 9 and is based upon the plat of original survey accepted January 6, 1922; supplemental plat of section 31 accepted March 18, 1953, and plat of a dependent resurvey of section 30 accepted July 27, 1960.

UNITED STATES DEPARTMENT OF THE INTERIOR
 BUREAU OF LAND MANAGEMENT
 Washington, D. C. October 8, 1965

This plat, showing amended lottings, is based upon the official records, and having been correctly prepared in accordance with the regulations, is hereby accepted.

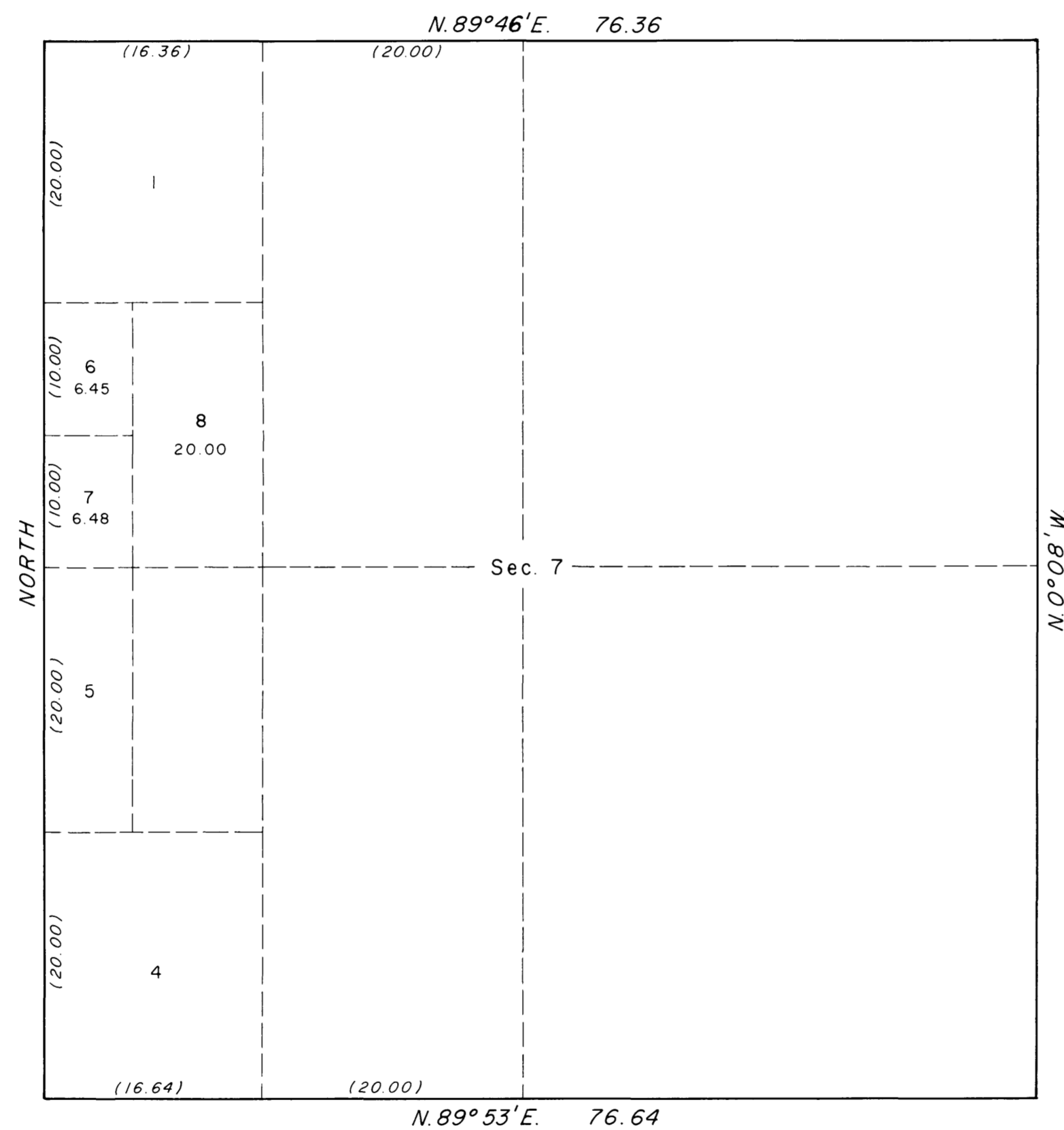
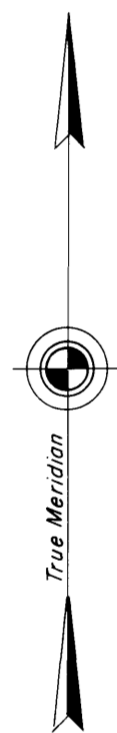
For the Director

E. J. Livingston
 Chief, Division of Engineering



TOWNSHIP 3 NORTH, RANGE II WEST, OF THE SEWARD MERIDIAN, ALASKA

SUPPLEMENTAL PLAT OF SECTION 7



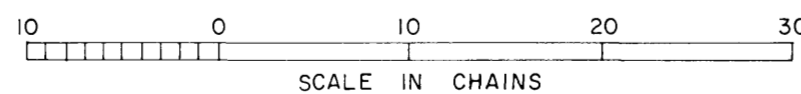
This plat shows a subdivision of original Lot 2, section 7, into Lots 6, 7, and 8, as based upon the plat accepted January 6, 1922.

UNITED STATES DEPARTMENT OF THE INTERIOR
BUREAU OF LAND MANAGEMENT
Washington, D. C. May 17, 1967

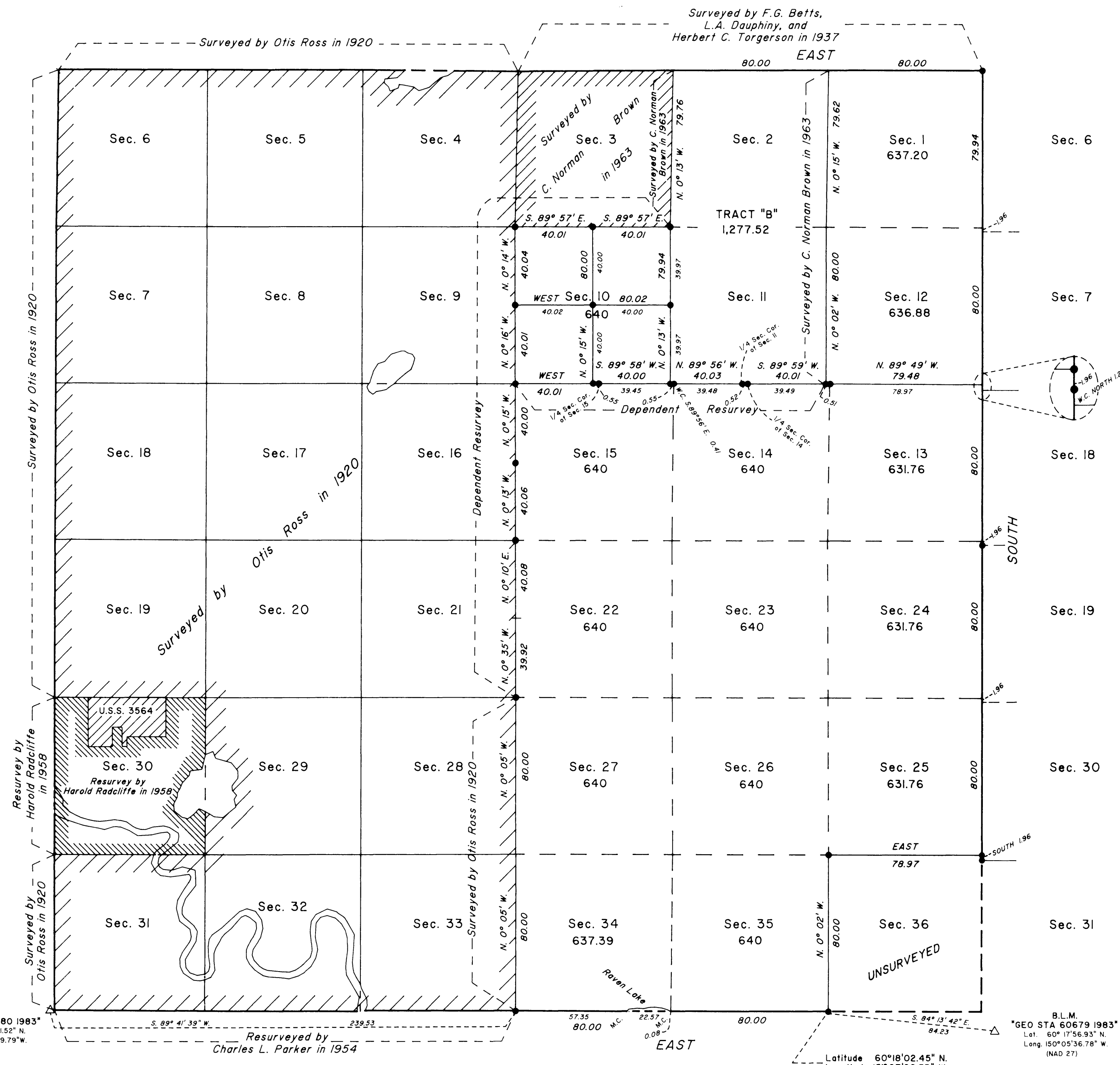
This plat, showing amended lottings, is based upon the official records, and having been correctly prepared in accordance with the regulations, is hereby accepted.

For the Director

E. J. Munro
Chief, Division of Engineering



TOWNSHIP 3 NORTH, RANGE 11 WEST, OF THE SEWARD MERIDIAN, ALASKA



The history of surveys is contained in the field notes.

This plat and the field notes represent the dependent resurvey of a portion of the subdivisional lines; the survey of portions of the south and east boundaries, a portion of the subdivisional lines, and meanders; and the subdivision of Tract A creating section 10 of Township 3 North, Range 11 West, Seward Meridian, Alaska. A portion of the subdivisional lines of the township were surveyed by protraction as shown on this plat.

The survey was executed by Paul J. Hickey, Cadastral Surveyor, September 5, 1986, through August 17, 1987, in accordance with the specifications set forth in the Manual of Surveying Instructions, 1973, Special Instructions for Group No. 412, Alaska, dated January 6, 1986, approved April 14, 1987, and Assignment Instructions dated April 20, 1987.

The hydrography on this plat was obtained by the Auto-Surveyor method.

Acceptance of this survey does not purport to transfer any interest in submerged lands to which the State of Alaska is entitled under the Equal Footing Doctrine and Section 6(m) of the Alaska Statehood Act, P.L. 85-508, notwithstanding the use, location, or absence of meander lines to depict water bodies.

UNITED STATES DEPARTMENT OF THE INTERIOR
BUREAU OF LAND MANAGEMENT
Anchorage, Alaska

This plat is strictly conformable to the approved field notes, and the survey, having been correctly executed in accordance with the requirements of law and the regulations of this Bureau, is hereby accepted.

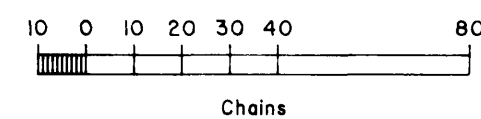
For the Director

Daniel W. Wall Dec. 17, 1991
(acting) Date

Deputy State Director for Cadastral Survey,
Alaska

B.L.M.
"GEO STA 60680 1983"
Lat. 60°18' 01.52" N.
Long. 151° 16' 09.79" W.
(NAD 27)

B.L.M.
"GEO STA 60679 1983"
Lat. 60° 17' 56.93" N.
Long. 150° 05' 36.78" W.
(NAD 27)



Area Surveyed: 8,286.75 Acres
Area Resurveyed: 1,917.52 Acres