



Yakutat Community Update: Trust Land Activities

Virtual

November 3, 2021
5:30-7PM

Virtual Meeting

- Please mute your microphone
- Please hold questions to the end of the presentation, there will be a question & answer period
- Slides also available at alaskamentalthhealthtrust.org/icyscape

The Team

- **Jusdi Doucet:** Executive Director, Trust Land Office
- **Karsten Eden:** Chief Geologist, Trust Land Office
- **Dave Griffin:** Southeast Lands Manager, Trust Land Office
- **Steve Williams:** Chief Operations Officer, Trust Authority
- **Allison Biastock:** Chief Communications Officer, Trust Authority

Trust

Alaska Mental Health Trust Authority

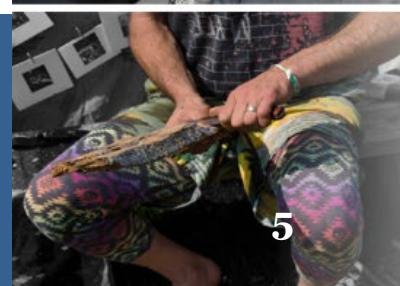
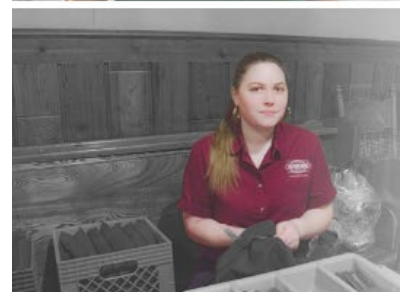
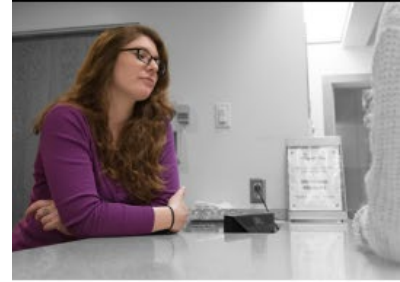
It is the duty of the Alaska Mental Health Trust Authority to provide leadership in the advocacy, planning, implementing and funding of services and programs for Trust beneficiaries.

Trust Beneficiaries

Beneficiaries include Alaskans who experience:

- Mental illnesses
- Intellectual and developmental disabilities
- Alzheimer's disease and related dementias
- Traumatic brain injuries
- Substance use disorders

The Trust also works in prevention and early intervention services for individuals at risk of becoming beneficiaries.



The Work of the Trust

Advocating for and providing grants to programs and initiatives that serve Alaska's most vulnerable populations.

- Disability Justice
- Housing & Home and Community-Based Services
- Employment & Engagement
- Mental Health & Addiction Interventions
- Workforce Development
- Early Childhood Intervention and Prevention

Grant Making

Trustees authorize around **\$25 million** in grants each year to nonprofits, service providers, state and local governments, and Tribal organizations.

Recent grants in Yakutat:

- Support for behavioral health services at the new Yakutat Community Health Center (Yakutat Tribal Health Board) – FY21
- Yakutat Tlingit Tribe Domestic Violence and Sexual Assault Shelter – FY20
- PPE for the City and Borough of Yakutat for COVID-19 response –FY20
- Behavioral health services and training for the Yakutat Tlingit Tribe -FY18



The Trust Land Office (TLO)

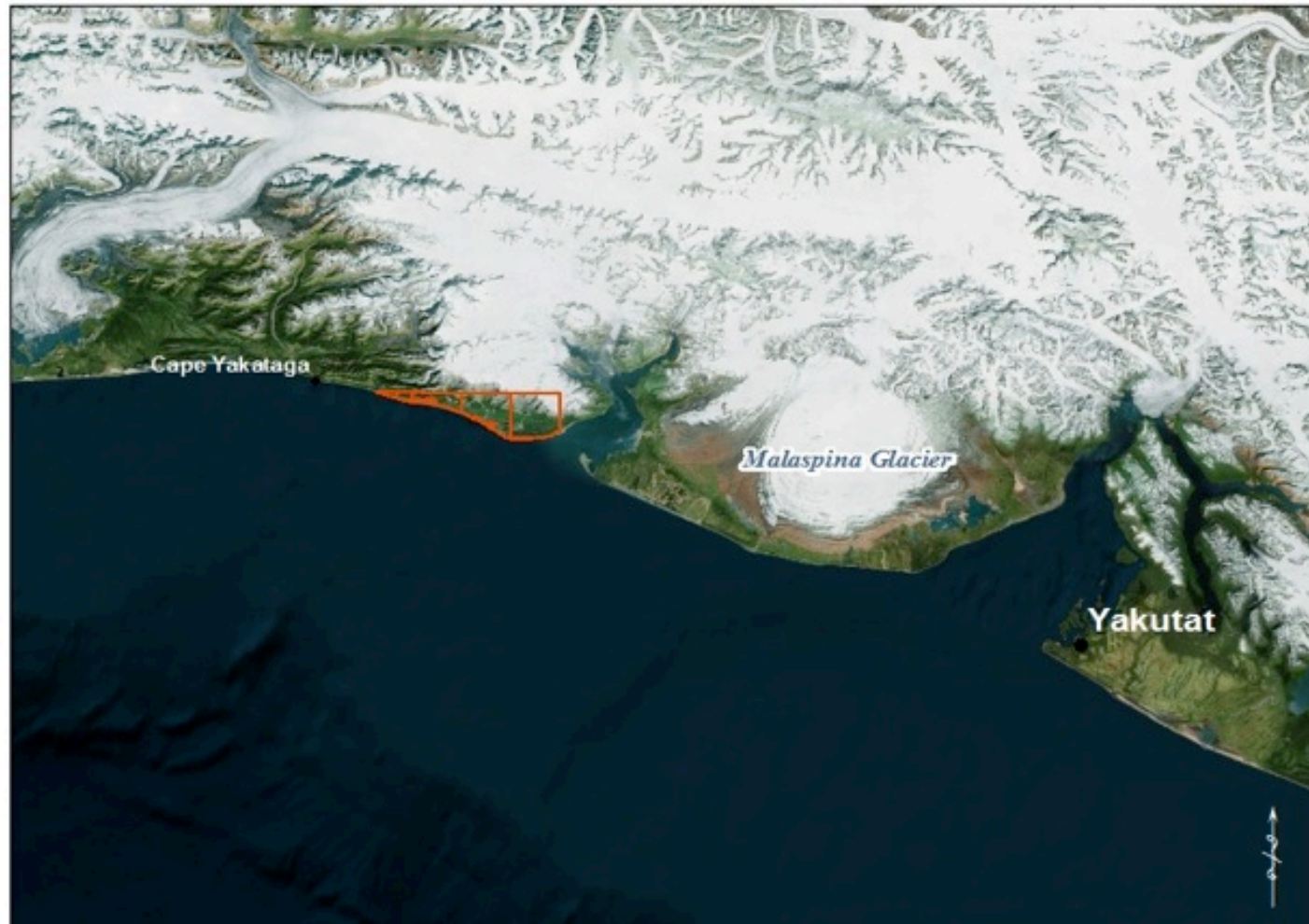
Manages Trust owned land and resources to generate revenue used by the Trust to improve the lives of the beneficiaries

The TLO protects & enhances the value of Alaska Mental Health Trust lands


Trust Land Management Principles

- Maximize long-term revenue & productivity from Trust land
- Protect corpus
- Encourage diverse revenue-producing uses of Trust land
- Manage Trust land prudently, efficiently & with accountability to the Trust & its beneficiaries

Icy Cape



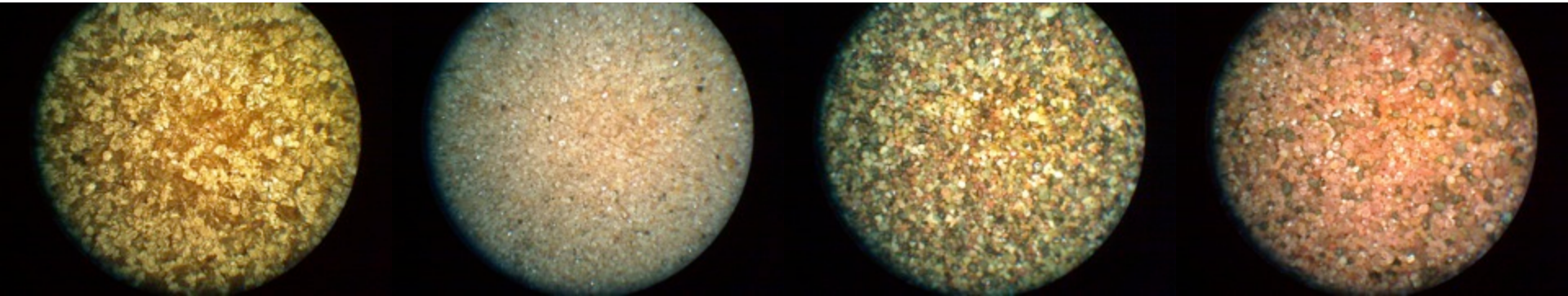
Mental Health
Trust Land
Near
Malaspina Glacier

 Mental Health
Trust Land



Icy Cape Project

The Icy Cape land block contains...



Gold

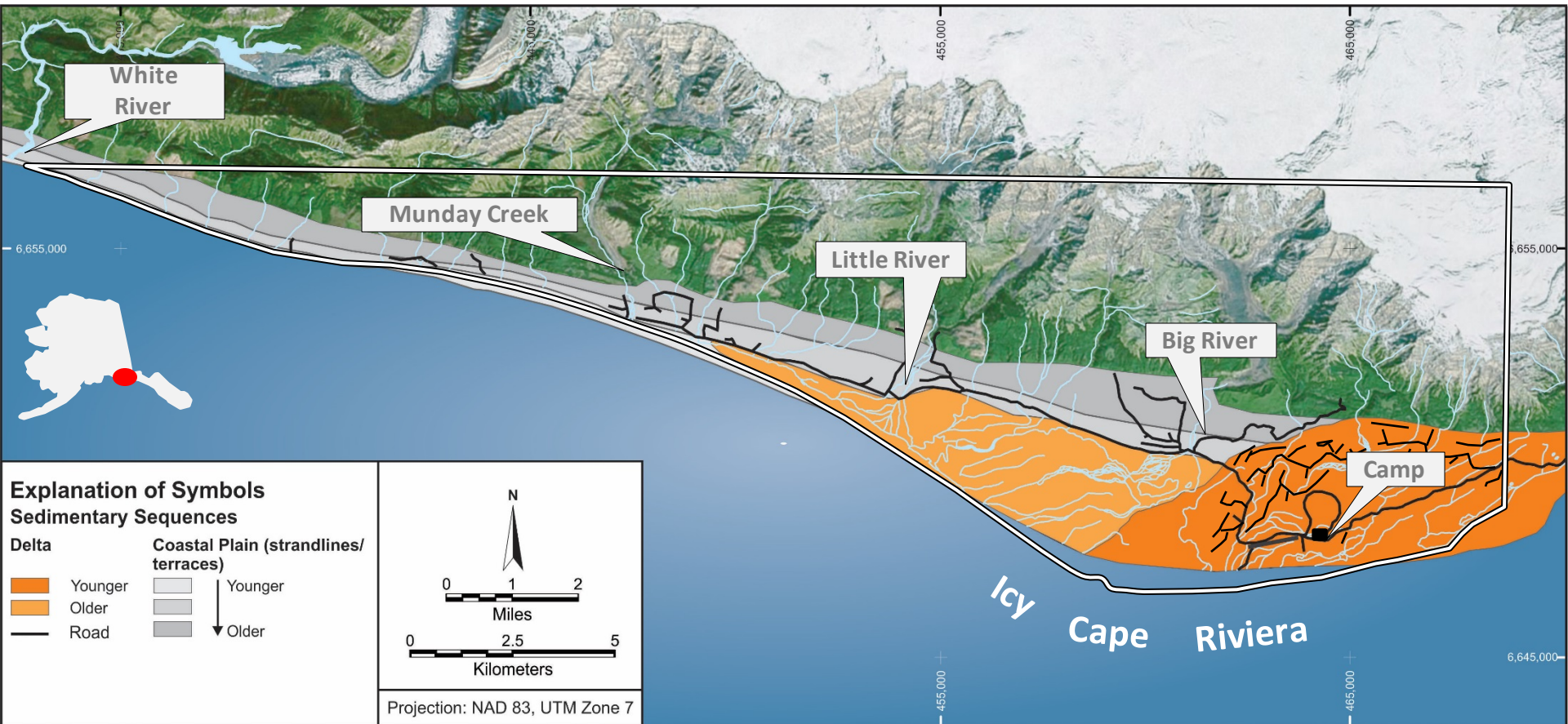
Zircon

Epidote

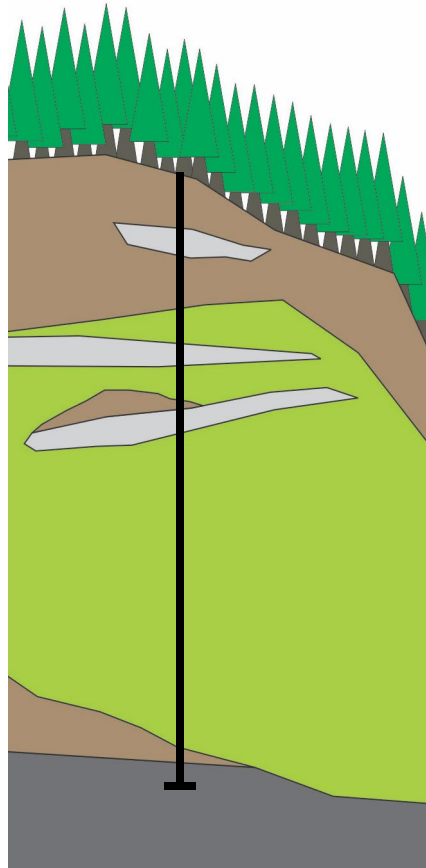
Garnet

- Significant prospects of gold & industrial heavy minerals.

Setting



Sediments



Unit A: cobbly sands with interbedded beach sands, contains gold and industrial heavy minerals



Diamicton (silt), contains gold)



Unit B: fine sands, contains gold and industrial heavy minerals



**Sand/siltstone
Yakataga Formation**

2015

- 3 people for 3 days
- Technical literature & archive documents & samples analyzed.
- Geological & mineral-resource maps compiled.



2016

- 6 people for 2 1/2 weeks
- 100 samples collected for analyses.
- Aeromagnetic survey conducted.



2017

- 16 people in camp, not including short-term visits
- Exploration team of placer gold and industrial heavy mineral sands experts
- Conducted stratigraphic framework drilling in eastern part of the property (7,000ft).



2018

- 23 people in camp, not including short-term visits
- Built sample processing facility
- Exploration team of placer gold and industrial heavy mineral sands experts
- Conducted stratigraphic framework drilling in western part of the property (6,000ft).



2019

- 6 people in camp, not including short-term visits
- Collected bulk sediment samples along new logging roads and stream sediment samples
- Analyses are consistent with large-volume gold and industrial placer mineral resource models.



2020

- Delineated Au and HM prospects
- Grade/tonnage models
- Au + HM resource estimates for selected prospects
- Independent Project review and development option scenario analysis by HATCH, a leading international consulting firm specializing in the mining industry
- Analyses are consistent with large-volume gold and industrial placer mineral resource models

2021

- Board of Trustees approved \$10M for additional exploration work towards indicated resources and a pre-feasibility study
- High resolution airborne gradient magnetic survey
- Grinder Prospect resource definition drilling plan
- Infrastructure improvements including drill access trails and camp upgrades
- Sample processing facility
- Preparation for resource definition drilling in 2022



What's Next for Icy Cape?

- Resource definition drilling at Grinder Prospect in 2022
- Ground magnetic survey over Grinder Prospect
- Regional reconnaissance sampling
- Regional geologic mapping
- Anticipate 24 people in camp in the summer of 2022

Environmental Impact

- Acquiring all required permits
- Following all pertinent state & federal regulations
- Maintaining long-term stewardship



Economic Opportunity

- Jobs/internship
- Air service
- Supplies
- Room & board



Icy Bay Timber Harvest

- The harvest was finalized in May 2021
- Only two ships in 2019 and one in 2020 due to market conditions (the 20% tariff on China Spruce)
- About 30 people from Yakutat work as Stevedores to load each ship.
- Each Ship provides an estimated to be \$80,000* in payroll to Yakutat

* SE Stevedoring

Yakutat Crew Loading the Ship



The final ship for the Icy Bay harvest was loaded in the summer of 2020.

Yakutat Timber Sale by Yak Timber

The TLO worked with Yak Timber to make additional timber available near Yakutat.

A selective harvest methodology was used to clear the area and to develop roads accessing Trust land parcels. Harvest also helped clear electrical utility ROW.



Yakutat Harvest

Project and roads
were completed by
Yak Timber in May
2021.

Opened access to
more than 40 lots in
the area.



Yakutat Alaska Subdivision

- As a part of the 2021 Fall Land Sale Auction, parcels in the Trust's Yakutat Alaska Subdivision on the east side of Airport Road are offered for sale
- Land sale auction is accepting bids through 4:30pm on November 15 – TLO financing is available
- Parcels not sold as a part of the fall land sale anticipated to become part of the TLO's Over-the Counter (OTC) offerings



2021 Auction: Yakutat

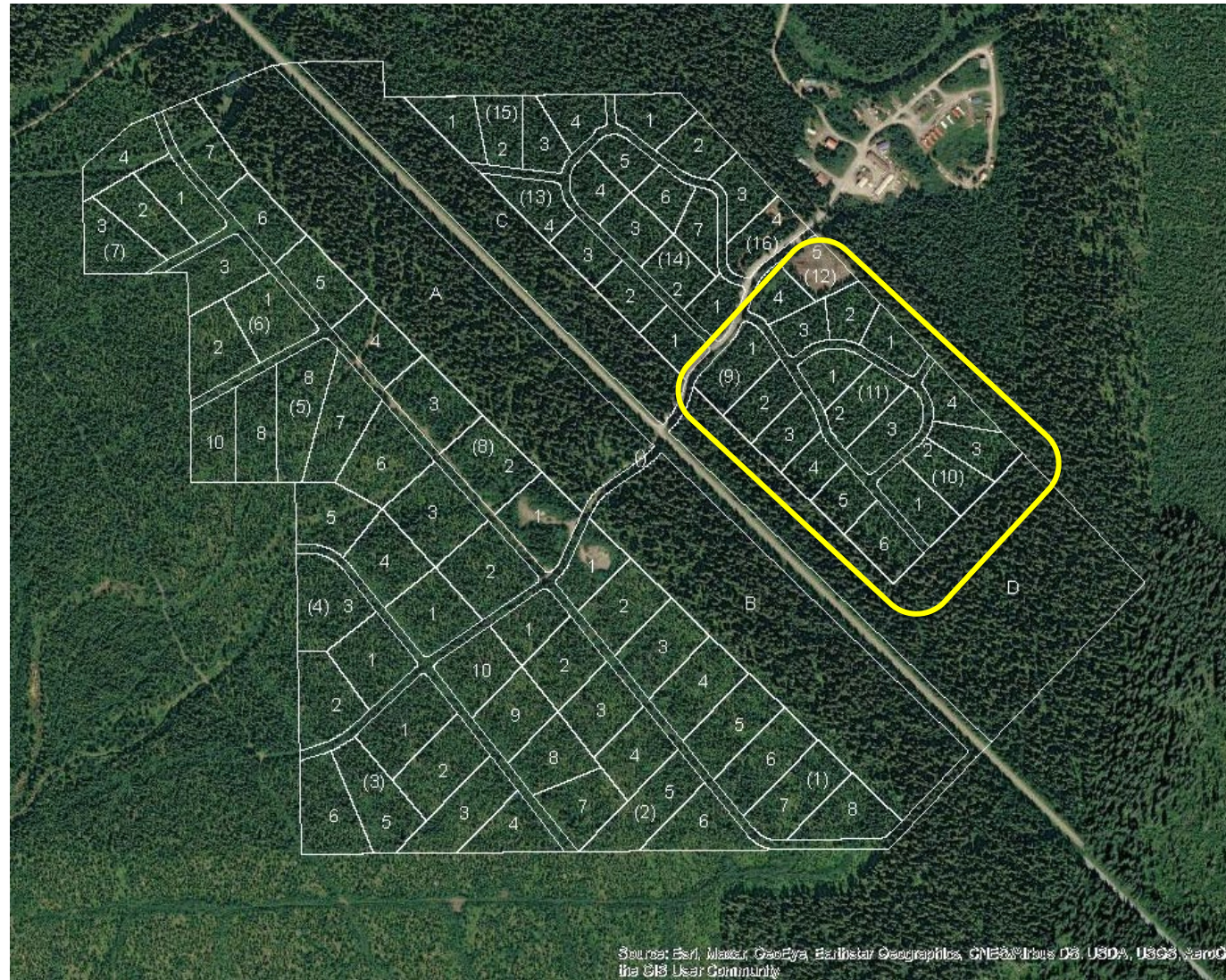
Yakutat Alaska Subdivision

- Lots are accessible via Glacier Bear Ave.
- Subdivision ROW has been cleared (approx. 60') and access roads have been constructed.



alaskamentalthtrust.org/FallLandSale

- 14 lots, currently offered – most between 2 and 3 acres
- Well drained, gravel/cobble substrate
- Power in vicinity, but no utilities to the lots
- Lots have not been cleared, there is second growth timber in the area



Thank You

Question and Answer

- During Q&A questions may be asked via your microphone, or via the chat function
- Please reserve the chat function for questions
- Please only unmute when speaking
- Please limit your question or comment to two minutes or less
- Please ensure all attendees have an opportunity to ask a question