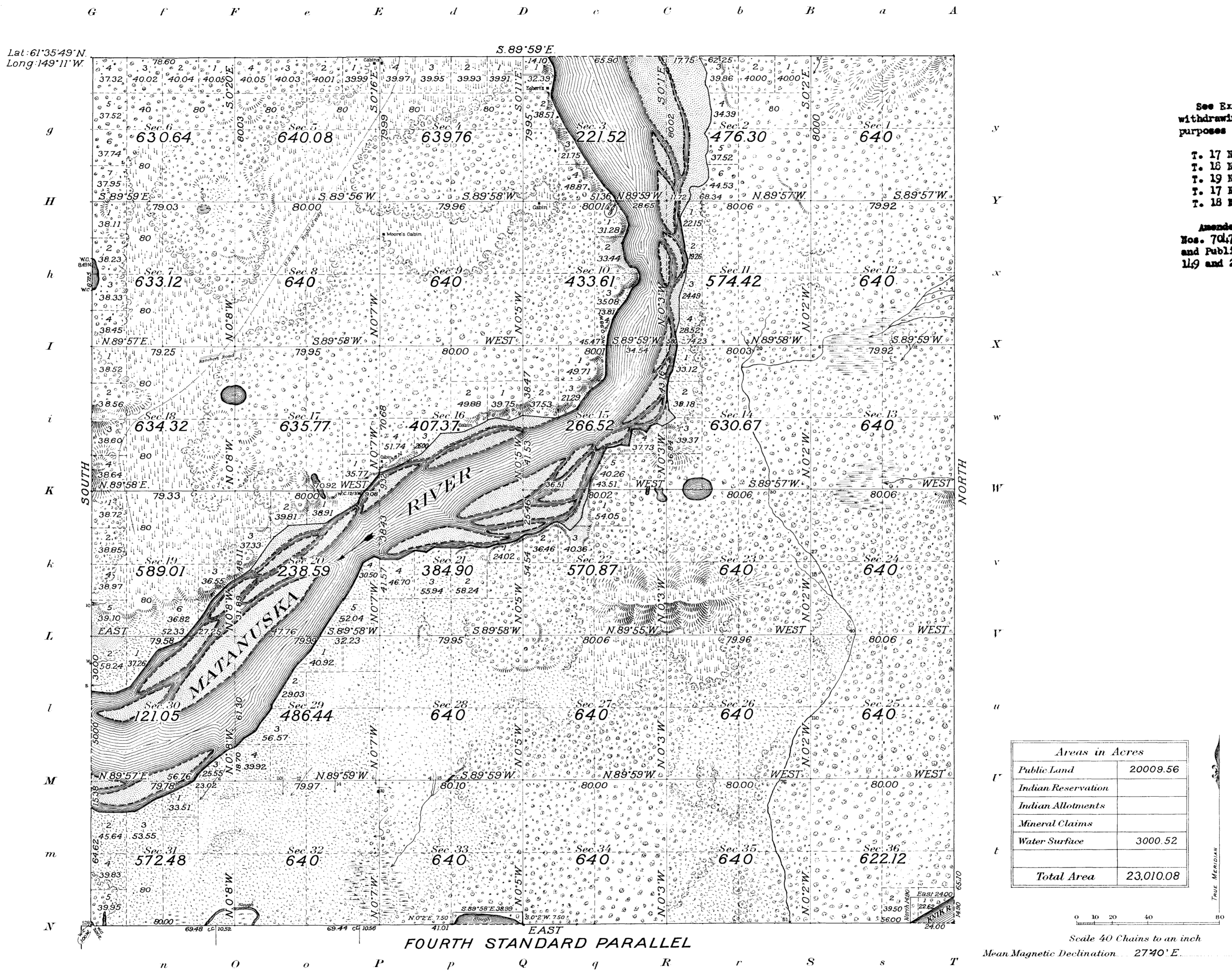


(4-675a)

Township N^o 17 North, Range N^o 2 East of the Seward Meridian, Alaska.



See Executive Order No. 6957 withdrawing for classification purposes

- T. 17 N., Rs. 1, 2 and 3 E.
- T. 18 N., Rs. 1, 2 and 3 E.
- T. 19 N., Rs. 1 and 2 E.
- T. 17 N., Rs. 1 and 2 W.
- T. 18 N., R. 1 W.

Amended by Executive Orders Nos. 7047, 7416, 8372 and 9022 and Public Land Orders Nos. 79, 119 and 272.

Surveys Designated	By Whom Surveyed	Group		Amount of Surveys			When Surveyed	
		No.	Date of Instructions	Mls.	chs.	lks.	Began	Completed
North boundary	FW Williamson, U.S.S.		May 31, 1913	5	78	60	Sept. 2, 1913	Sept. 22, 1915
South "	Hans D. Voigt, U.S.T.		Aug. 9, 1915	5	71	00	Aug. 20, 1915	Sept. 15, "
East "	Roy J. Gill, "			6	24	00	Sept. 2, 1913	" 20, "
West "	FW Williamson, U.S.S. T.W. Bates, U.S.T.		May 31, 1913	6	00	00	July 15, 1913	July 23, 1913
Subdivision	FW Williamson, U.S.S. T.W. Bates, U.S.T.		Aug. 9, 1915	58	77	05	Aug. 20, 1915	Sept. 24, 1915
Meanders	Roy J. Gill, U.S.T. Hans D. Voigt, U.S.T.			15	42	12		

The above map of Township No. 17 North Range No. 2 East of the Seward Meridian Alaska is strictly conformable to the field notes of the survey thereof on file in this office, which have been examined and approved

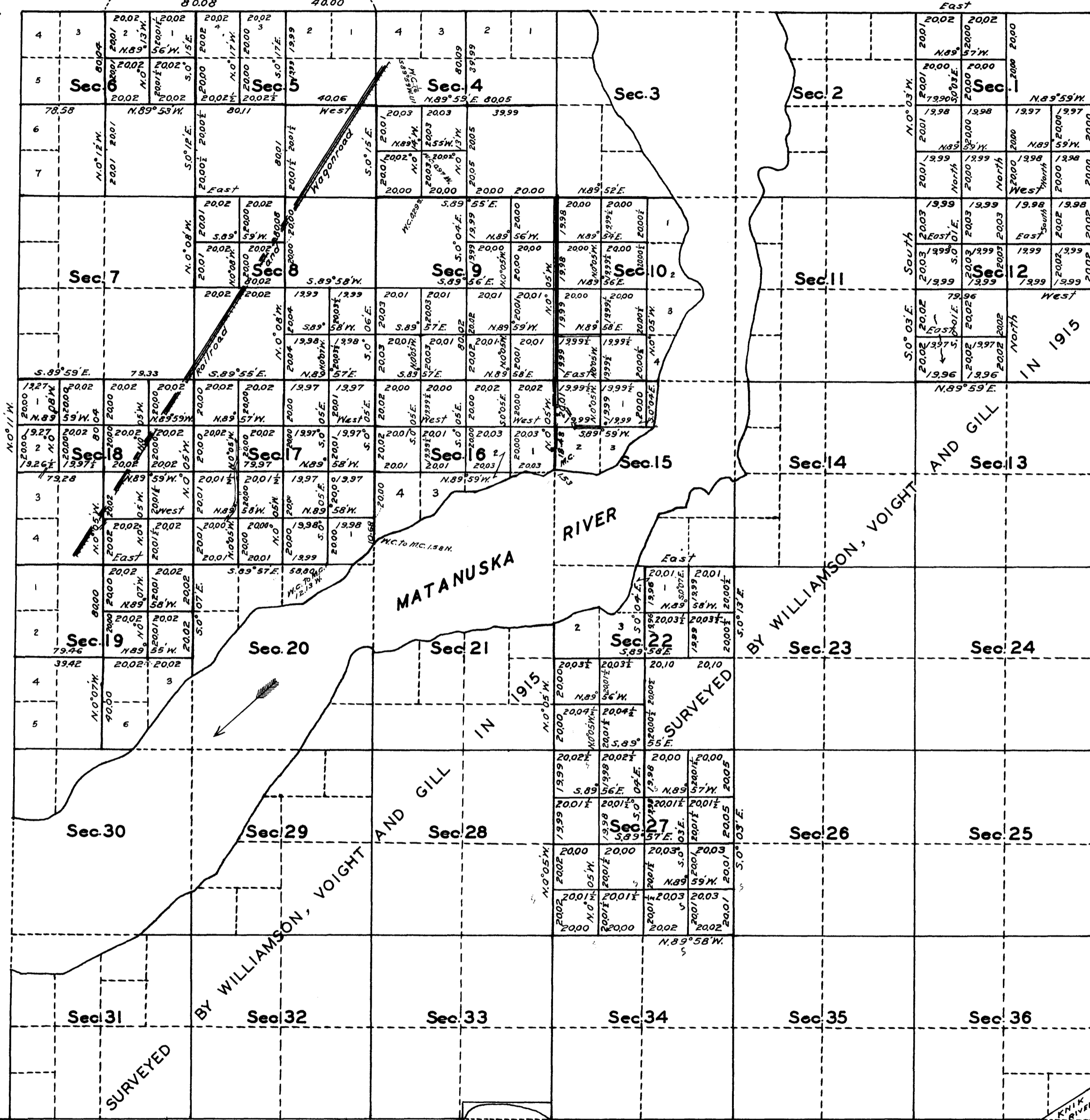
U.S. Surveyor General's Office.
Juneau, Alaska, Aug. 10, 1916

Charles E. Davidson
Surveyor General.

E.T. Calc. & Topog.

TOWNSHIP No. 17 NORTH, RANGE No. 2 EAST OF THE SEWARD MERIDIAN, ALASKA

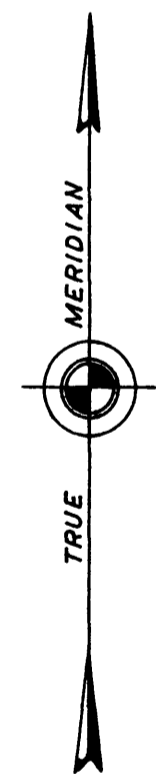
LATITUDE 61°35' 49" N.
LONGITUDE 149° 11' W.



See Executive Order No. 6957
withdrawing for classification
purposes

T. 17 N., R. 1, 2 and 3 E.
T. 18 N., R. 1, 2 and 3 E.
T. 19 N., R. 1 and 2 E.
T. 17 N., R. 1 and 2 W.
T. 18 N., R. 1 W.

Amended by Executive Orders
Nos. 7017, 7116, 8372 and 9022
and Public Land Orders Nos. 79,
119 and 272.



SCALE: 40 CHAINS TO AN INCH

MEAN MAGNETIC DECLINATION 27° 40' E.

LINES DESIGNATED	BY WHOM SURVEYED	GROUP		MILEAGE		WHEN SURVEYED	
		No.	DATE	MLS.	GHS.	BEGUN	COMPLETED
EXTERIOR OF SECTIONS	FLOYD G. BETT S., U.S.G.E.	50	APRIL 11, 1935	25	9 12	APRIL 28, 1935	SEPT. 14, 1935
SUBDIVISION OF SECTIONS	E. D. GALVIN CHAS P. SEELYE, U.S.T.	"	" " "	58	78 23	" " "	" " "

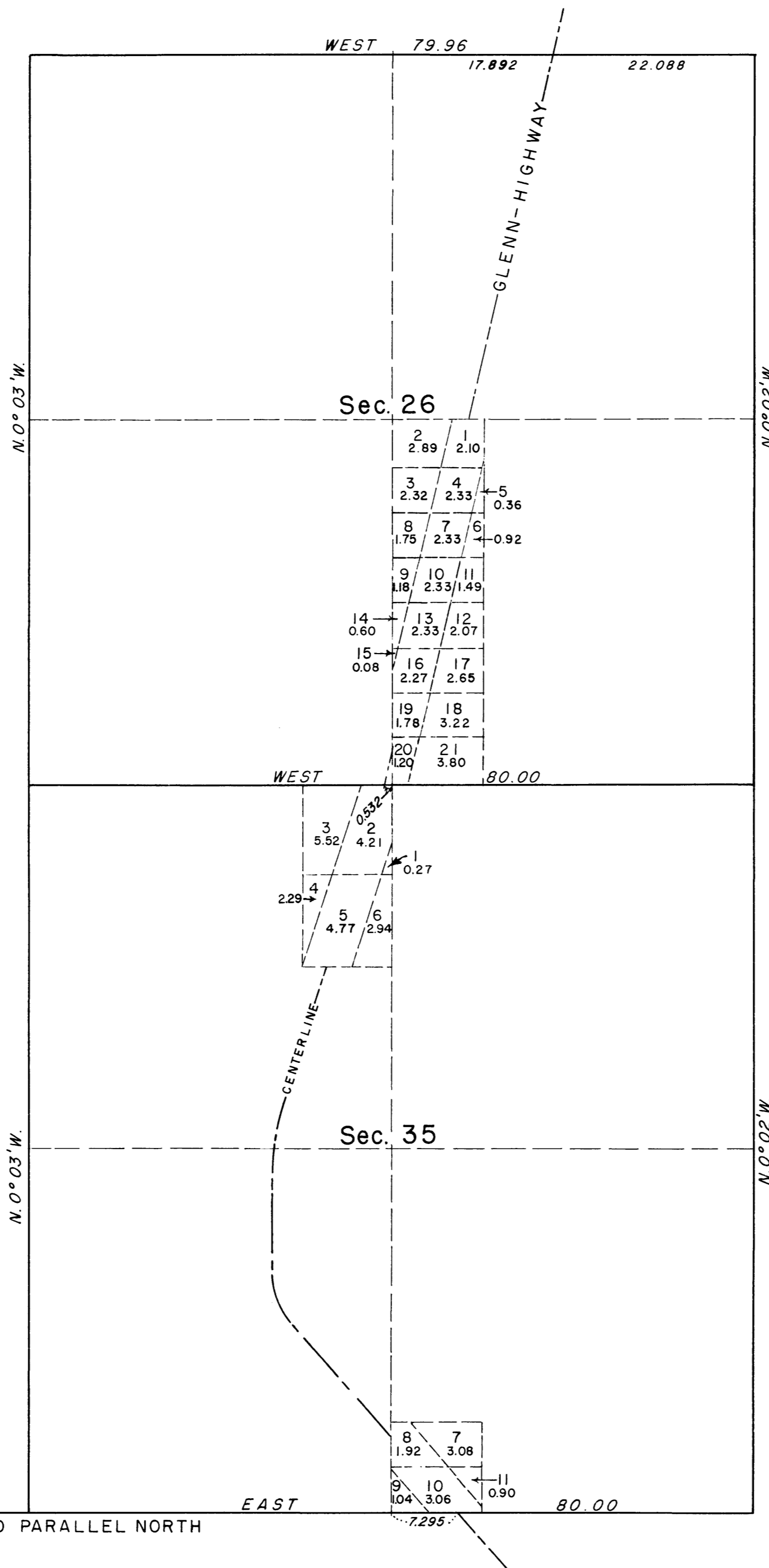
Office of THE Supervisor of Surveys
Denver, Colorado, May 6, 1937
The above plat of Township No. 17 North, Range No. 2 East of the Seward Meridian, Alaska is strictly conformable to the field notes of the survey thereof which have been examined and approved.

William J. Johnson
Supervisor of Surveys

UNITED STATES
DEPARTMENT OF THE INTERIOR
GENERAL LAND OFFICE
Washington, D. C., FEBRUARY 11, 1938.
The survey represented by this plat having been correctly executed in accordance with the requirements of law and the regulations of this office, is hereby accepted.

Arthur W. Frank
Assistant Commissioner

TOWNSHIP 17 NORTH, RANGE 2 EAST OF THE SEWARD MERIDIAN, ALASKA
 SEGREGATION OF GLENN HIGHWAY RIGHT OF WAY



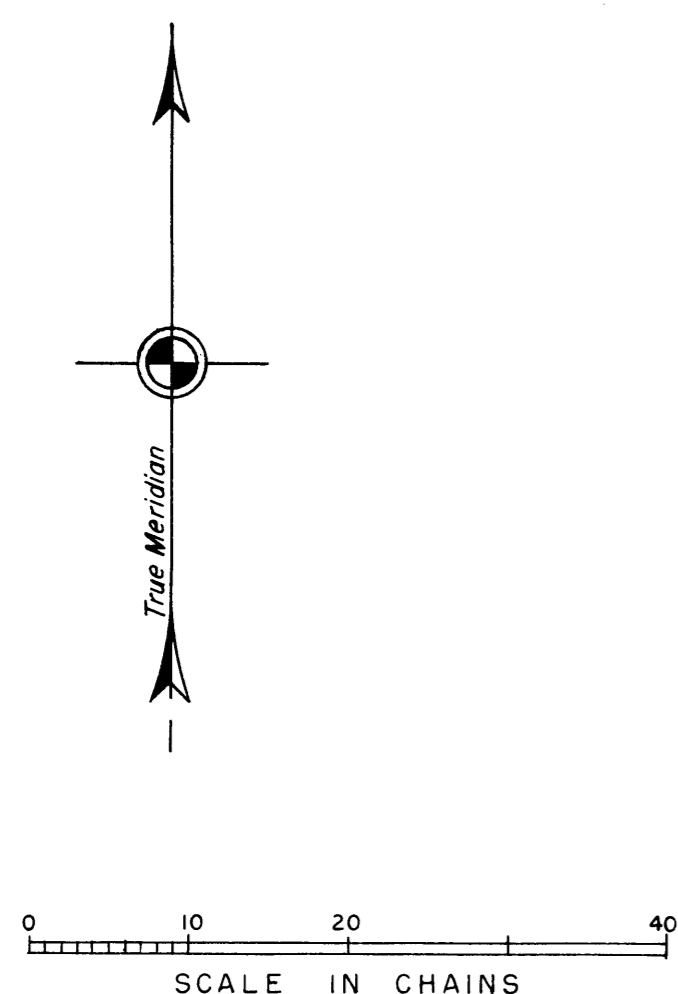
This plat of T. 17 N., R. 2 E., Seward Meridian, Alaska, showing the segregation of the Glenn Highway Right-of-Way 300 feet wide, 150 feet on each side of the center line of said highway, through the $W\frac{1}{2}NW\frac{1}{4}SE\frac{1}{4}$ sec. 26 and $E\frac{1}{2}NE\frac{1}{4}NW\frac{1}{4}$ and $SW\frac{1}{4}SW\frac{1}{4}SE\frac{1}{4}$ sec. 35, is based upon the survey of the centerline of Glenn Highway, executed by Harold Radcliffe, Cadastral Engineer, October 9 to 12, inc., 1951, under Special Instructions dated April 11, 1935 for Group 50, Alaska, and upon previous surveys shown on the plats accepted September 2, 1916 and February 11, 1938.

For intermediate bearings and distances along the Glenn Highway centerline see field notes.

UNITED STATES DEPARTMENT OF THE INTERIOR
 BUREAU OF LAND MANAGEMENT
 Washington, D. C., October 19, 1953

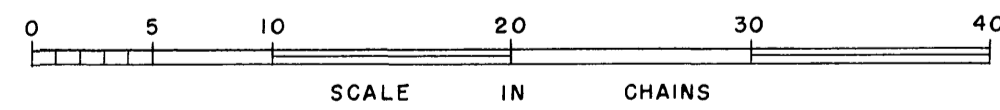
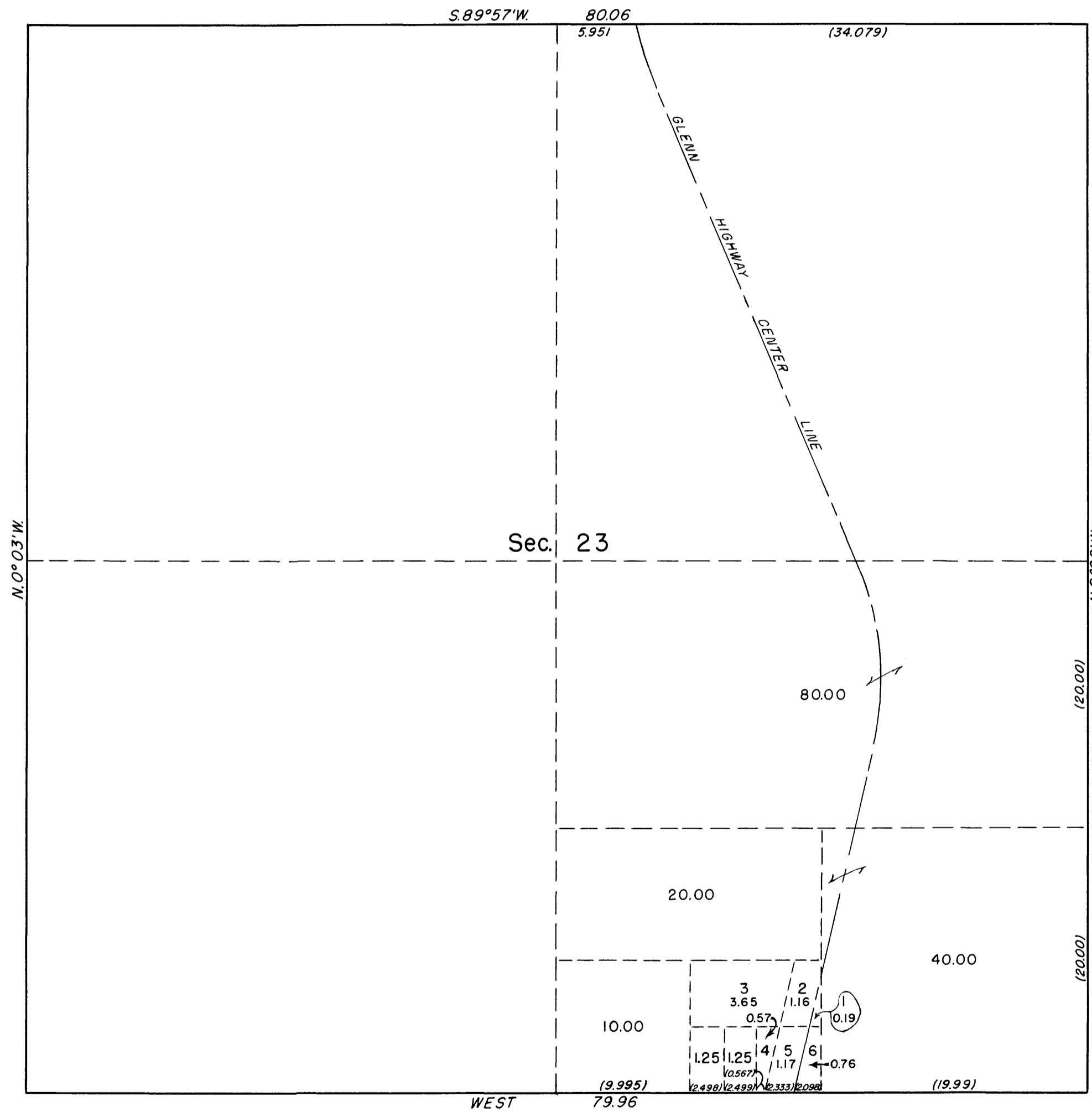
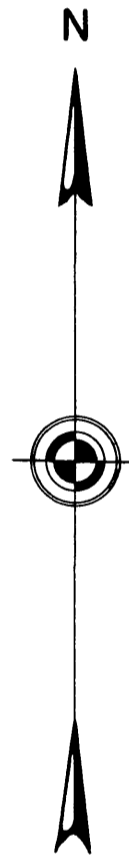
This plat is strictly conformable to the approved field notes, and the survey, having been correctly executed in accordance with the requirements of law and the regulations of this Bureau, is hereby accepted.

For the Director
Donald B. Cement
 Assistant Chief, Division of
 Cadastral Engineering



FOURTH STANDARD PARALLEL NORTH

TOWNSHIP 17 NORTH, RANGE 2 EAST OF THE SEWARD MERIDIAN, ALASKA
SEGREGATION OF GLENN HIGHWAY RIGHT OF WAY



This plat, showing a segregation of the Glenn Highway right-of-way 300 feet wide in Section 23, T. 17 N., R. 2 E., of the Seward Meridian, Alaska, is based upon plats accepted September 2, 1916 and February 11, 1938, and the center line survey of the Glenn Highway executed September 6 to October 14, 1952 by the Alaska Road Commission under the supervision of Leonard M. Berlin, Area Cadastral Engineering Officer, and special instructions for Group 50, Alaska.

UNITED STATES DEPARTMENT OF THE INTERIOR
BUREAU OF LAND MANAGEMENT
Washington, D. C. March 15, 1956

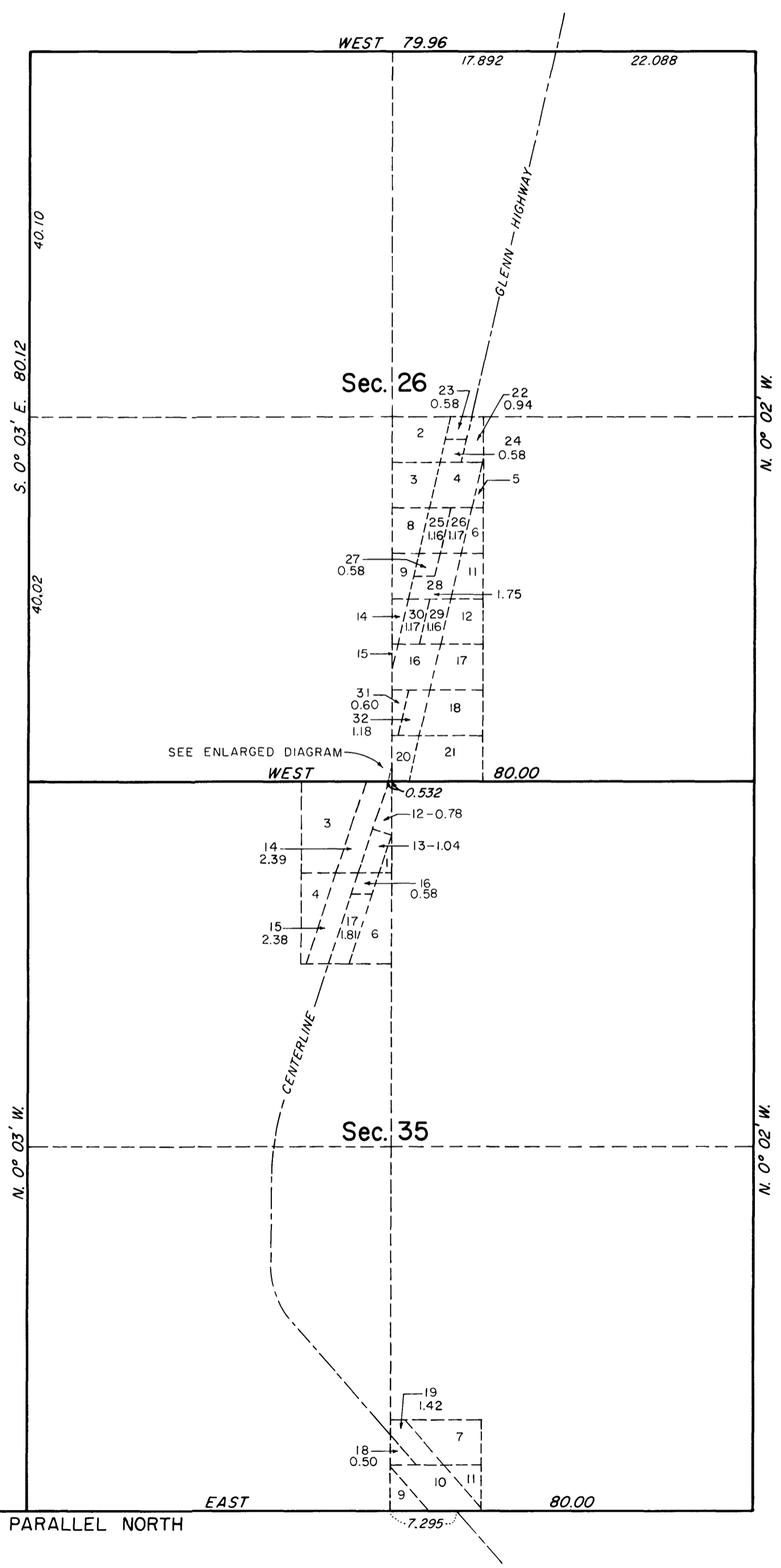
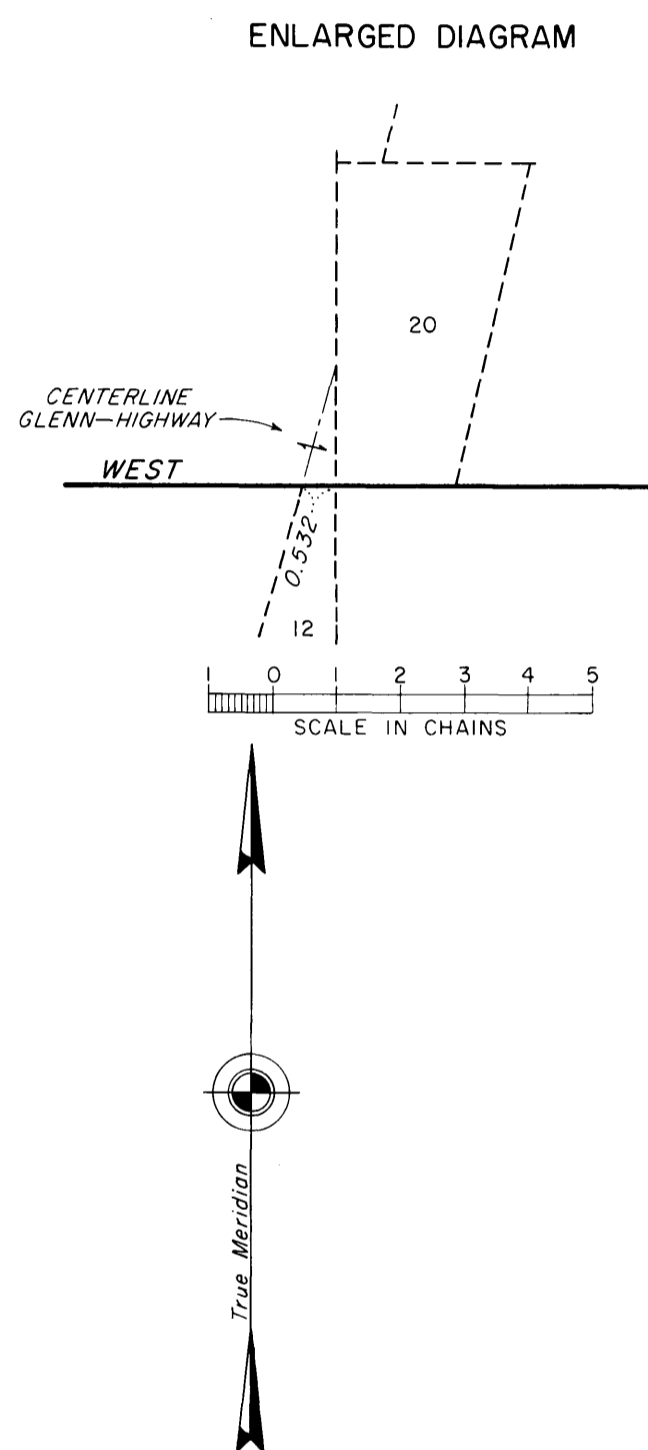
This plat is strictly conformable to the approved field notes, and the survey, having been correctly executed in accordance with the requirements of law and the regulations of this Bureau, is hereby accepted.

For the Director

Acting Cadastral Engineering Staff Officer

TOWNSHIP 17 NORTH, RANGE 2 EAST, OF THE SEWARD MERIDIAN, ALASKA

SUPPLEMENTAL PLAT



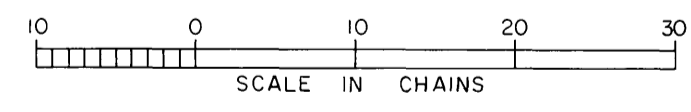
This supplemental plat, showing amended lottings, is based upon the plat of secs. 26 and 35, T. 17 N., R. 2 E., of the Seward Meridian, Alaska, accepted October 19, 1953.

UNITED STATES DEPARTMENT OF THE INTERIOR
BUREAU OF LAND MANAGEMENT
Washington, D.C. August 10, 1973

This plat, showing amended lottings, is based upon the official records and, having been correctly prepared in accordance with the regulations, is hereby accepted.

For the Director
Chuck I. Sumner

Chief, Division of Cadastral Survey

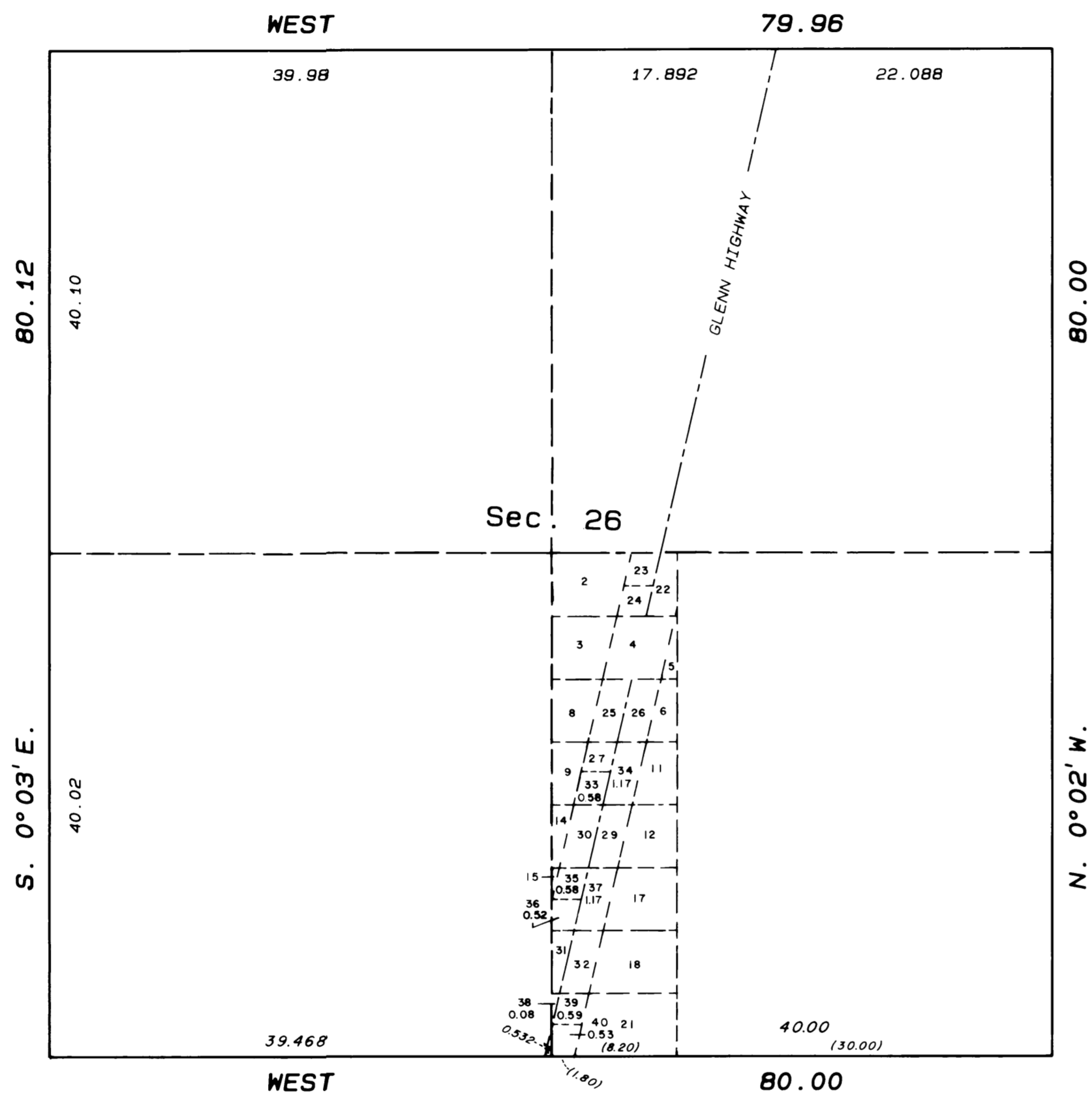


AWT

FOE

TOWNSHIP 17 NORTH, RANGE 2 EAST, OF THE SEWARD MERIDIAN, ALASKA
SUPPLEMENTAL PLAT

This supplemental plat, showing amended lottings, is based upon the segregation of Glenn Highway right-of-way, sections 26 and 35, accepted October 19, 1953, and the supplemental plat of sections 26 and 35, accepted August 10, 1973, both of Township 17 North, Range 2 East, Seward Meridian, Alaska.



UNITED STATES DEPARTMENT OF THE INTERIOR
BUREAU OF LAND MANAGEMENT
Anchorage, Alaska

This plat, showing amended lottings, is based upon the official records and, having been correctly prepared in accordance with the regulations of this Bureau, is hereby accepted.

For the Director

Francis R. [Signature] July 18, 1985
Date

Deputy State Director for Cadastral Survey,
Alaska