

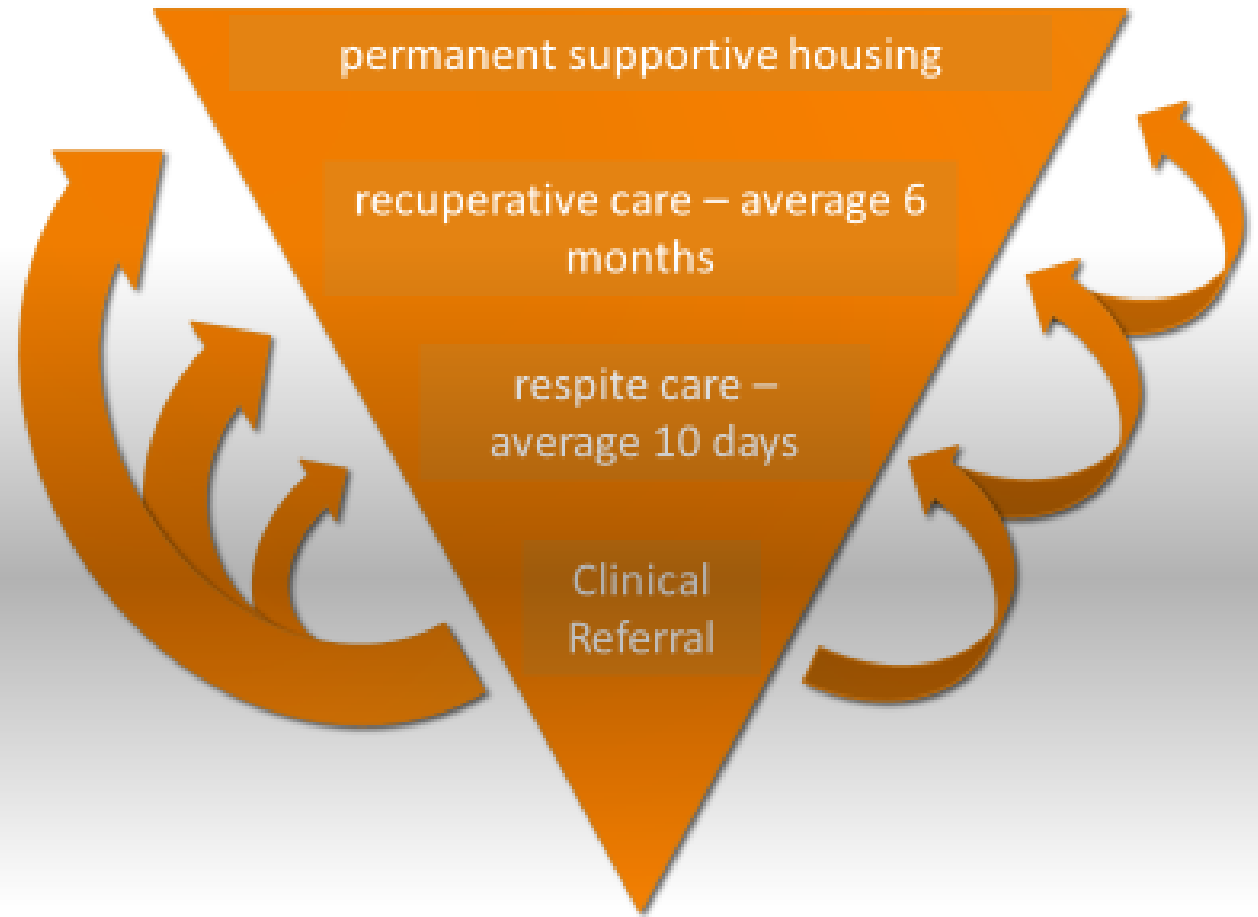
## *HOUSING IS HEALTH*

- Since 1985, 18 Projects Developed, in WA, OR, CA
- 853 Units in Operation
- 8 New Projects Now in Development (606 units)
- 708 Senior/HUD 202, Aging-in-Place Objectives
- 6 PSH Projects developed, in operation
- 8 PSH Projects in Development, Developmental Care Objectives



# Developmental Care Model

- Prioritize referrals from emergency departments and acute care beds.
- respite care stays tied to duration of medical treatment
- recuperative care stays tied to stabilization of mental, behavioral or social challenges
- permanent supportive units tied to long term stability and maintenance





## INDEPENDENCE THROUGH HOUSING

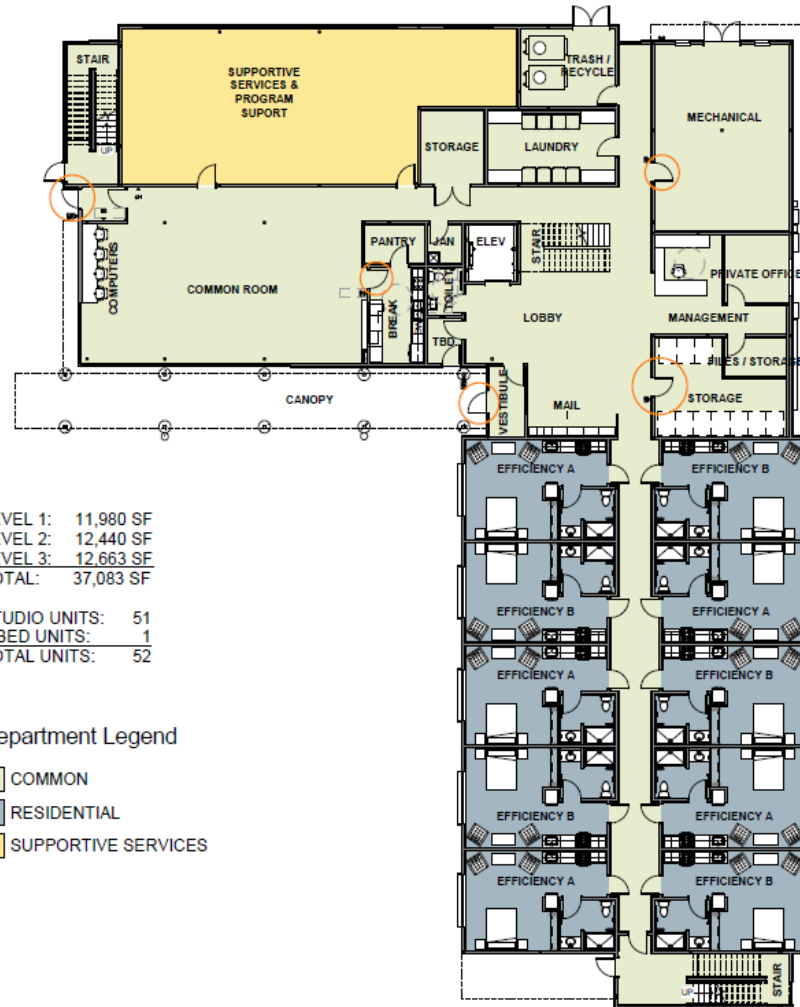
- Cook Inlet Housing Authority was established in 1974 as a Regional Housing Authority for the Cook Inlet Region
- Currently 1708 units developed and managed (743 senior / 965 family)
- 26 successful AHFC Low Income Housing Tax Credit (LIHTC) GOAL projects since 2002
- \$183 million in LIHTC equity funding awards
- \$10.5 million in other AHFC GOAL funding awards
- 14 Federal Home Loan Bank Affordable Housing Program grant awards totaling \$10.5M since 2016
- Philosophy of success through collaboration and partnership









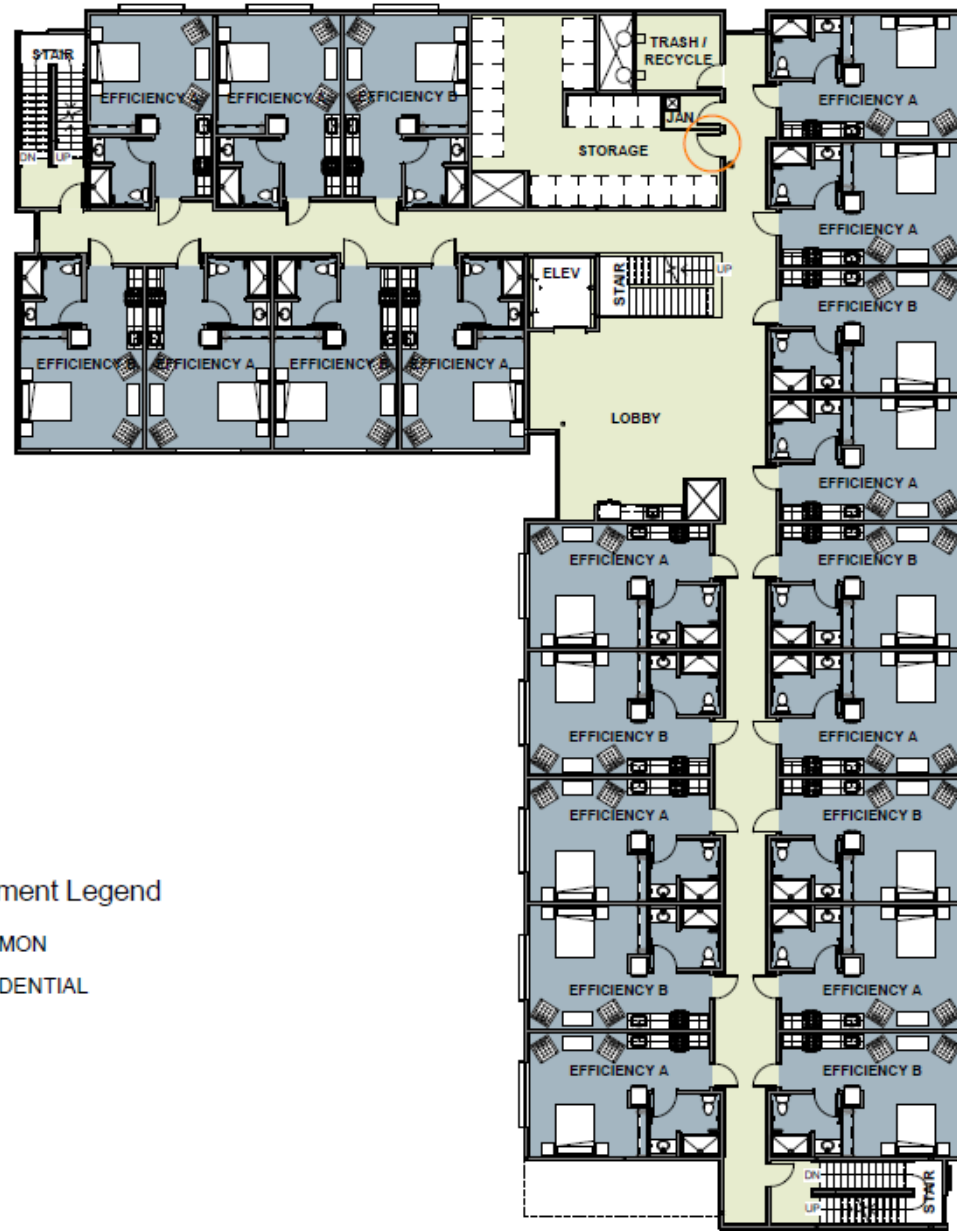


LEVEL 1: 11,980 SF  
 LEVEL 2: 12,440 SF  
 LEVEL 3: 12,663 SF  
 TOTAL: 37,083 SF

STUDIO UNITS: 51  
 1-BED UNITS: 1  
 TOTAL UNITS: 52

Department Legend

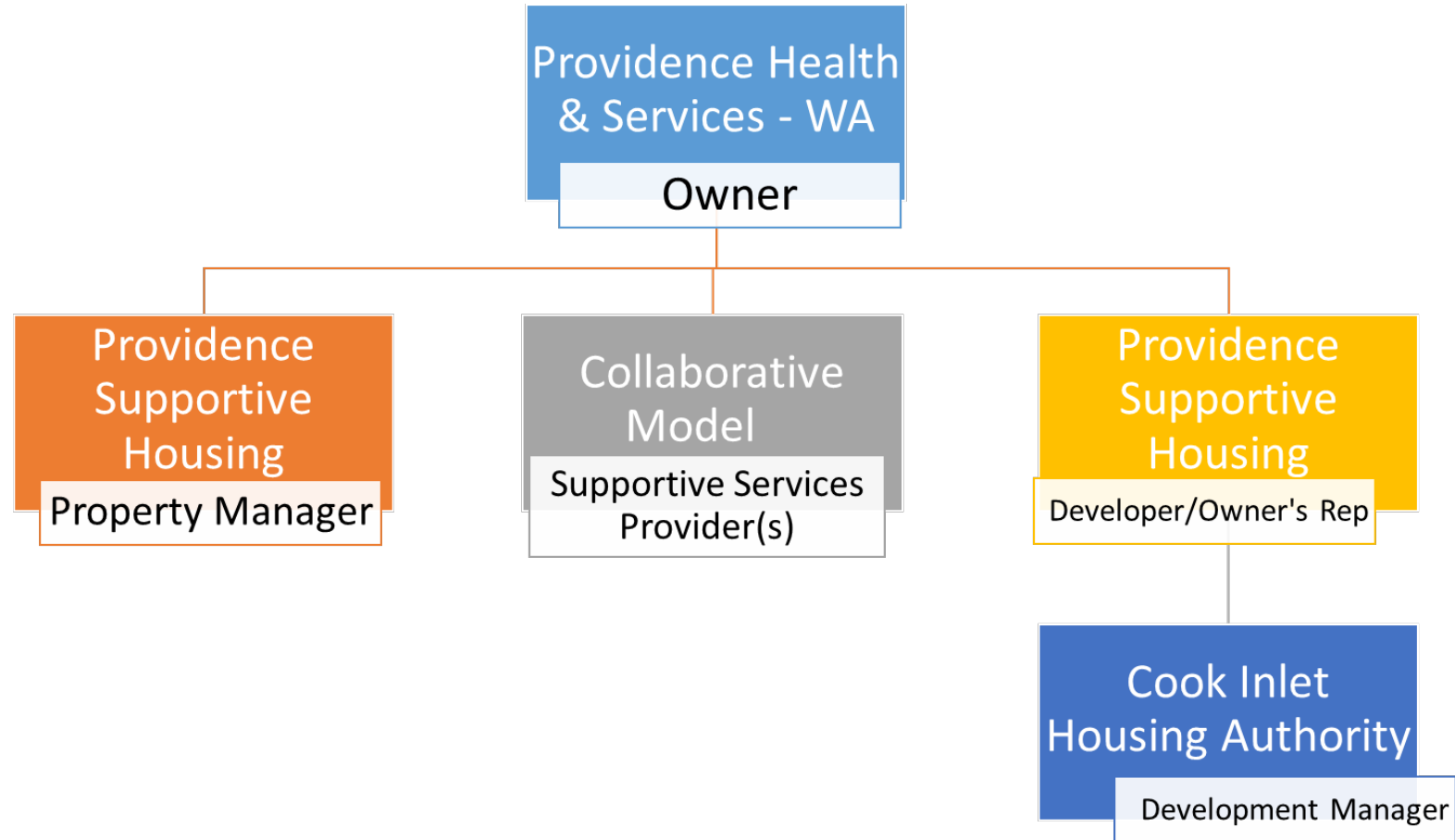
- COMMON
- RESIDENTIAL
- SUPPORTIVE SERVICES



### Department Legend

- COMMON
- RESIDENTIAL

# Midtown Project, Org Chart





# PROJECT OBJECTIVES

- *REDUCE HOMELESS HOSPITALIZATION*
- *PROMOTE RESIDENT HEALTH and INDEPENDENCE*
- *FIDELITY TO AGING-IN-PLACE MODEL FOR SENIOR HOUSING*
- *COMMITMENT TO LONG TERM COMMUNITY PARTNERSHIPS*

# Program Overview

## POPULATIONS SERVED

Chronically homeless  
55+  
40 - 55

## HEALTHCARE PARTNERS

Providence Alaska Medical Center  
Alaska Regional Hospital  
Alaska Native Medical Center  
Alaska VA Health System

## SUPPORTIVE SERVICES - MODELS OF CARE

Housing First (agency)  
Recuperative Care (stable health/readiness for permanent housing)  
Permanent supportive housing (independence, long term health)

## UNIT MIX

Studios	51
1-bdrm unit	1 staff unit
	<hr/>
	52

## RENT SUBSIDIES

PSH units receive project-based voucher assistance - resident paid rent does not exceed 30% of the resident's gross monthly income.

## REFERRALS, ENGAGEMENT, SUPPORTIVE SERVICES

Cook Inlet Tribal Council  
Southcentral Foundation  
Rural CAP  
Providence Behavioral Health  
Catholic Social Services  
Anchorage Coalition to End Homelessness

# ACEH Data – Senior Homelessness

Homeless 55+ - 864 (June 2021)

## By AMHTA Disability Category

All AMHTA Disabilities Combined - 596

SUD - 363

Developmental - 84

Mental Illness - 353

TBI - 125

2 or More AMHTA Disabilities - 265

## Demographics

550 Males

312 Females

46.4% Alaska Native/American Indian

1.7% Asian

13.3% Black or African American

38% White

## For 265 w/2+ AMHTA Disabilities:

Ave Length of Homelessness = 3 years

Max length of Homelessness = 7 yr./2 mnths

40 homeless 55+ w/2+ disabilities length of homeless = 5+ years.

# Stakeholder Engagement

## Stakeholder Visioning Session

Meeting Date: October 9, 2020

Meeting Summary: October 23, 2020

### Meeting Participants:

Nancy Burke, Housing and Homeless Service Coordinator, MOA

Patrick Anderson, CEO, RuralCAP

Corrine O'Neill, LCSW, Support Services Manager, Providence Cancer Center

Lauren Anderson, Manager of Case Management and Social Services, Providence Alaska Medical Center

Rob Marx, Housing Supervisor, RuralCAP

Sarah Sandbak, Chief Financial Officer, RuralCAP

Dick Mandsager, Senior Fellow, Rasmuson Foundation

Renee Rafferty, LPC, Regional Director of Behavioral Health, Providence Behavioral Health, Alaska

Holly Morales, Senior Program Manager, CITC

Jenae MacNaughton, Clinical Director, Recovery Services, CITC

Samantha Hansen, ETSD Senior Manager, CITC

Nathan Johnson, Regional Director, Community Health, Providence Alaska Medical Center

Jasmine Boyle, MBA/MSHS, Executive Director, Anchorage Coalition to End Homelessness

Shanna Zuspan, Consultant, Agnew Beck

Tammy Bailey, Director of Reimbursement, Alaska Regional Hospital

Kelda Barstad, LMSW, Program Officer, Alaska Mental Health Trust

Lisa Aquino, CEO, Catholic Social Services

Tatianna Ticknor, Unguwat Grant Coordinator, Alaska Native Heritage Center

Lisa Sauder, CEO, Beans Cafe

Marlene Mack, Senior Manager, Advocacy for Victims, Alaska Native Justice Center

Taylor Donovan, Director of Operations, Anchorage Coalition to End Homelessness

Michelle Baker, Senior Director, Behavioral Services Division, Southcentral Foundation

Melissa Castaneda, Elder and Youth Program Manager, ANTHC

Thea Agnew Bembem, Principal, Agnew Beck

LeeAnn Cooper Garrick, COO, CITC



# The most successful Providence Supportive Housing project will.....

## **Project Critical Success Factors:**

The most successful Providence Supportive Housing project will....

- Create strong partnerships with the community, project partners, and the MOA,
- Illustrate stewardship to the environment and efficiency in both the first costs and operations,
- Capture robust, early funding support from grants and funding partners,
- Provide the best service to our vulnerable community both now and in the future,
- Provide a sustainable, replicable model of supportive housing, and
- Generate broad, lasting community support.

# PHASE I SCHEDULE

