



Alaska Mental Health Trust Land Exchange Exchange Agreement

The ALASKA MENTAL HEALTH TRUST AUTHORITY, a State of Alaska public corporation within the State of Alaska, Department of Revenue (AS 47.30.011 et seq.), acting through the State of Alaska, Department of Natural Resources, Trust Land Office (TLO) pursuant to AS 37.14.009, AS 38.05.801 and 11 AAC 99, and the United States of America, acting by and through the Forest Service (FS), Department of Agriculture, accept the final appraised acreage and land values of the Alaska Mental Health Trust Land Exchange to be:

Federal lands	20,151 acres at a value of \$22,103,700
Non-Federal lands	17,908 acres at a value of \$20,656,300

The value of the Federal lands exceeds the value of non-Federal lands by \$1,447,400. The acreage needed to equalize the \$1,447,400 difference in the Federal and non-Federal lands is determined by dividing \$1,447,400 by the \$850.56 Shelter Cove per acre appraised value, which equals 1,701 acres. It is not practicable to remove 1,701 acres from the Shelter Cove Tract because it would require additional survey of lands prior to conveyance resulting in further delay of the land exchange.

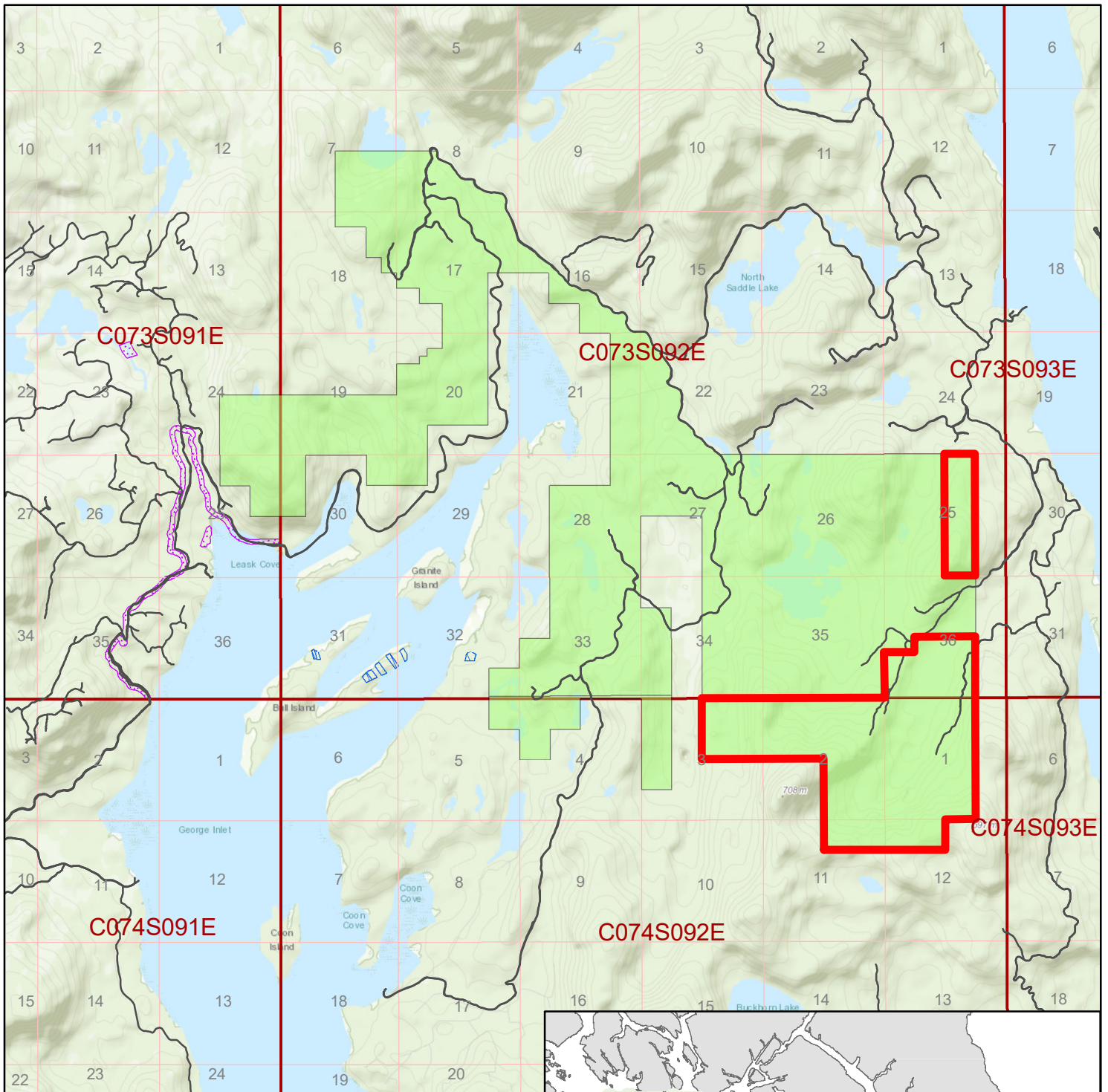
In accordance with Section (4)(j)(2)(A) of the Alaska Mental Health Trust Land Exchange Act of 2017 (131 Stat. 502) (The Act), the Federal and non-Federal parties agree that removing 1,659.37 acres, as depicted on the enclosed map, is the maximum extent practicable, as directed by the legislation.

The Federal and non-Federal parties hereby determine to equalize the land values of this land exchange with a cut-out of 1,659.37 acres and a cash payment of \$35,408.81, from the TLO to the US, for the remaining difference in values, in accordance with section 206(b) of the Federal Land Policy Management Act of 1976 (43 U.S.C. 1716(b)). This shall be the mechanism of balance in this land exchange.



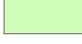

By signing below, the Federal and non-Federal parties concur with the analysis of the final appraised acreage and land values. The Federal and non-Federal parties concur with 1,659.37 acres being the maximum extent practicable to cut-out lands and the \$35,408.81 cash payment from the TLO to the United States as the complete mechanism of balance for this land exchange.

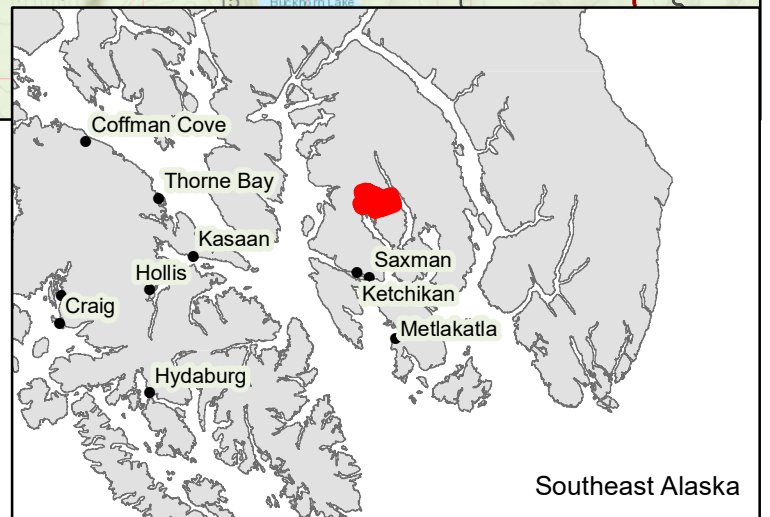
X James King Date 6/7/2021
James King, USDA Forest Service
Region 10, Director of Recreation, Lands and Minerals

DocuSigned by:
Wyn Menefee Date 6/4/2021
Wyn Menefee, Trust Land Office
Executive Director



Alaska Mental Health Trust Lands to be Exchanged

-  Roads
-  Lands to be Removed
-  Land Exchange Parcels
-  Easements



Southeast Alaska