

PLAT

of

U.S. SURVEY NO. 2528

of the

Trail Lake Group of Homesites embracing

Lots 1 to 33 inclusive

Executed under the Act of Congress,

Approved May 14, 1896

Amended May 26, 1934

situated

at mile 29, Seward - Hope Highway between highway and Alaska Railroad, and on west side of highway TERRITORY OF ALASKA

Net Area of Lots: 144.56 acres Area: 164.16 acres Declination: 28°15' E Scale: 5 chains to the inch

Latitude 60°28'23"N. Longitude 149°21' W

Survey executed by

F. W. Williamson, Associate Cadastral Engineer August 29 to October 2, 1941

CERTIFICATE OF APPROVAL PUBLIC SURVEY OFFICE

Juneau, Alaska, NOV. 27, 1943.

The original field notes of Survey No. 2528, of the Trail Lake Group of Homesites embracing Lots 1 to 33 inclusive from which this plat has been made, have been examined and approved, and are on file in this office, and I hereby certify that they furnish such an accurate description of said claim as will, if incorporated into a patent, serve fully to identify the premises, and that such reference is made therein to natural objects and permanent monuments, as will perpetuate and fix the locus thereof. And I further certify that this is a correct plat of said claim, made in conformity with said original field notes of the survey thereof, and the same is hereby approved.

Signature of District Cadastral Engineer

UNITED STATES

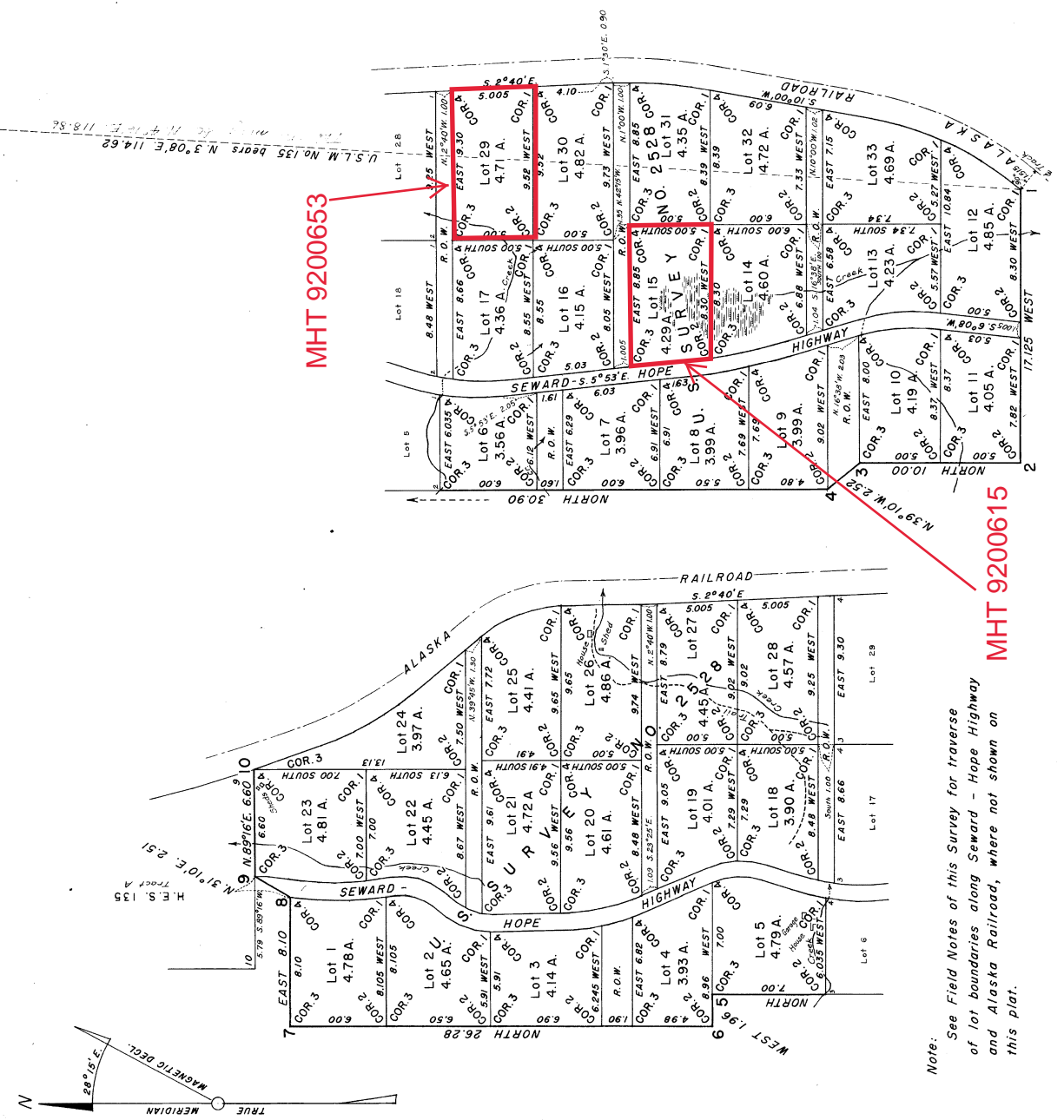
DEPARTMENT OF THE INTERIOR GENERAL LAND OFFICE

Washington, D.C., APRIL 23, 1945

The survey represented by this plat having been correctly executed in accordance with the requirements of law and the regulations of this office, is hereby accepted.

Signature of Assistant Commissioner

Assistant Commissioner.



Note: See Field Notes of this Survey for traverse of lot boundaries along Seward - Hope Highway and Alaska Railroad, where not shown on this plat.