



**ALASKA  
MENTAL HEALTH BOARD**

---

**ADVISORY BOARD ON  
ALCOHOLISM & DRUG ABUSE**

**STATUTORY ADVISOR UPDATE 2025**

Kermit E. Wilson Executive Director

# AMHB/ABADA BOARDS PURPOSE



ALASKA  
MENTAL HEALTH BOARD  

---

ADVISORY BOARD ON  
ALCOHOLISM & DRUG ABUSE

The joint mission of the Advisory Board on Alcoholism and Drug Abuse (ABADA) and the Alaska Mental Health Board (AMHB) is to **advocate for programs and services that promote healthy, independent, productive Alaskans.**

AMHB/ABADA are statutorily charged with **advising, planning, and coordinating behavioral health services and programs** funded by the State of Alaska. The Statewide Suicide Prevention Council (SSPC) **advises the governor and legislature on issues** relating to suicide. In collaboration with communities, faith-based organizations, and public-private entities, the Council works to **improve the health and wellness of Alaskans by reducing suicide and its effect on individuals and communities.**





**ALASKA  
MENTAL HEALTH BOARD**

**ADVISORY BOARD ON  
ALCOHOLISM & DRUG ABUSE**

# **AMHB/ABADA BOARDS SNAPSHOT**

- **26 Members**
  - **Professional**
  - **Lived Experience**







**ALASKA  
MENTAL HEALTH BOARD**

**ADVISORY BOARD ON  
ALCOHOLISM & DRUG ABUSE**

# **AMHB/ABADA BOARDS SNAPSHOT**

## **Four Committees**

- **Executive Committee**
  - **Planning Committee**
  - **Advocacy Committee**
  - **Board Development Committee**







ALASKA  
MENTAL HEALTH BOARD

ADVISORY BOARD ON  
ALCOHOLISM & DRUG ABUSE

# Executive Director SNAPSHOT

- Challenge
  - Change
    - Collaborate
      - Complete



# Increasing Board Member Engagement



ALASKA  
MENTAL HEALTH BOARD  
ADVISORY BOARD ON  
ALCOHOLISM & DRUG ABUSE

## Board Duties

- Public Engagement
  - Board Representation
    - Policy & Budget Recommendations
      - Advocacy & Accountability

# Statement of Intent with the TRUST



ALASKA  
MENTAL HEALTH BOARD

---

ADVISORY BOARD ON  
ALCOHOLISM & DRUG ABUSE

1. Data and Research

2. Planning

3. Advocacy

# Statement of Intent with the TRUST



ALASKA  
MENTAL HEALTH BOARD  

---

ADVISORY BOARD ON  
ALCOHOLISM & DRUG ABUSE

## 1. Data and Research

- **Special Coordinator 2**

## 2. Planning

- **2 – Health Planner 2**
- **Administrative Assistant 2**



### 3. Advocacy



ALASKA  
MENTAL HEALTH BOARD  
ADVISORY BOARD ON  
ALCOHOLISM & DRUG ABUSE

#### **ADVOCACY COORDINATOR**

Facilitate and coordinate the annual legislative strategy

1. Research Legislative matters and initiatives
2. Provide consultation to the Boards, staff, and Trust
3. Facilitate the development of the Board's legislative initiatives
4. Facilitate a monthly Board's Legislative Committee meeting
5. Prepare for and facilitate weekly teleconferences during the legislative session
6. Plan and Facilitate legislative training, educational, and research activities
7. Prepare a written report on the events and accomplishments of each legislative session by July 31st to be presented to Boards, staff, and Trustees.

### 3. Advocacy



ALASKA  
MENTAL HEALTH BOARD  
ADVISORY BOARD ON  
ALCOHOLISM & DRUG ABUSE

## Legislative Session Final Report

- . **HB 138 - Behavioral Health Crisis Surcharge Fund**
- . **HB 73/SB 76 - Complex Care Residential Homes (Governor Dunleavy)**
- . **HB 52 - Minors and Psychiatric Hospitals**
- . **SB 44 - Related to Minors and Psychiatric Hospitals**
- . **SB 45 - Related to Medicaid Mental Health Parity**
- . **HB 53/HB 55 Operating and Mental Health Budget**
- . **SB 90 Related to Minor Mental Health; Age of Consent**





ALASKA  
MENTAL HEALTH BOARD

---

ADVISORY BOARD ON  
ALCOHOLISM & DRUG ABUSE

# SAMSHA BLOCK GRANT

## SHAMSHA BLOCK GRANT



ALASKA  
MENTAL HEALTH BOARD

---

ADVISORY BOARD ON  
ALCOHOLISM & DRUG ABUSE

### **PRIORITY POPULATION**

1. Pregnant Women and Women with Dependent Children
2. Persons Who Inject Drugs
3. Persons in Need of Recovery Support Services
4. Individuals with Co-Occurring Mental Health
5. Persons Experiencing Homelessness
6. Persons with SUD at Risk for Tuberculosis (TB)
7. Persons with SUD at Risk for HIV
8. Individuals in Need of Priority Substance Use Prevention



## SHAMSHA BLOCK GRANT



ALASKA  
MENTAL HEALTH BOARD  
ADVISORY BOARD ON  
ALCOHOLISM & DRUG ABUSE

### PRIORITY AREAS:

1. Promote behavioral health program sustainability and improve system responsiveness
2. Integrate physical health and behavioral health into whole-person care
3. Early intervention and treatment for serious mental illness
4. Strengthen and expand the behavioral health crisis response system
5. Reduce the incidence of mental health and substance use disorders.
6. Maintain and enhance community-based behavioral health services for youth and families
7. Strengthen Behavioral Health Supports for Pregnant Women and Families with Dependent Children
8. Recovery support services will be embedded throughout the continuum to improve retention in care and promote long-term wellness.
9. Improve Access to Substance Use Treatment and Basic Health Supports for persons with injection drug use.

# SAMSHA BLOCK GRANT



ALASKA  
MENTAL HEALTH BOARD  

---

ADVISORY BOARD ON  
ALCOHOLISM & DRUG ABUSE

## Public Comment Deadline is August 28<sup>th</sup>

### How to View the Live Application

To view the most current version of Alaska's Combined MHBG and SUPTRS Block Grant Application:

Access the WebBGAS platform using the link: <https://bgas.samhsa.gov/Module/BGAS/Users>

Use the following credentials to log in:

Username: citizenak

Password: citizen

### Select View and Existing Application

Click on the link for the **FY 2026-2027 Combined MHBG/SUPTRS BG Application/Behavioral Health Assessment and Plan.**



# Older Adult Suicide Prevention Policy Academy

Substance Abuse and Mental Health Services Administration  
U.S. Department of Health and Human Services

August 20-21, 2025



**SAMHSA**  
Substance Abuse and Mental Health  
Services Administration

# Older Adult Suicide Prevention Policy Academy

## **Tony Newman**

-Dir. AK Senior & Disabilities

## **Yasmin Radbod**

-PC AK Commission on Aging

## **Kara Nelson**

-ABADA, Chair

## **Stephanie Smith**

-Public Health Specialist 2

## **Annelise Hudson**

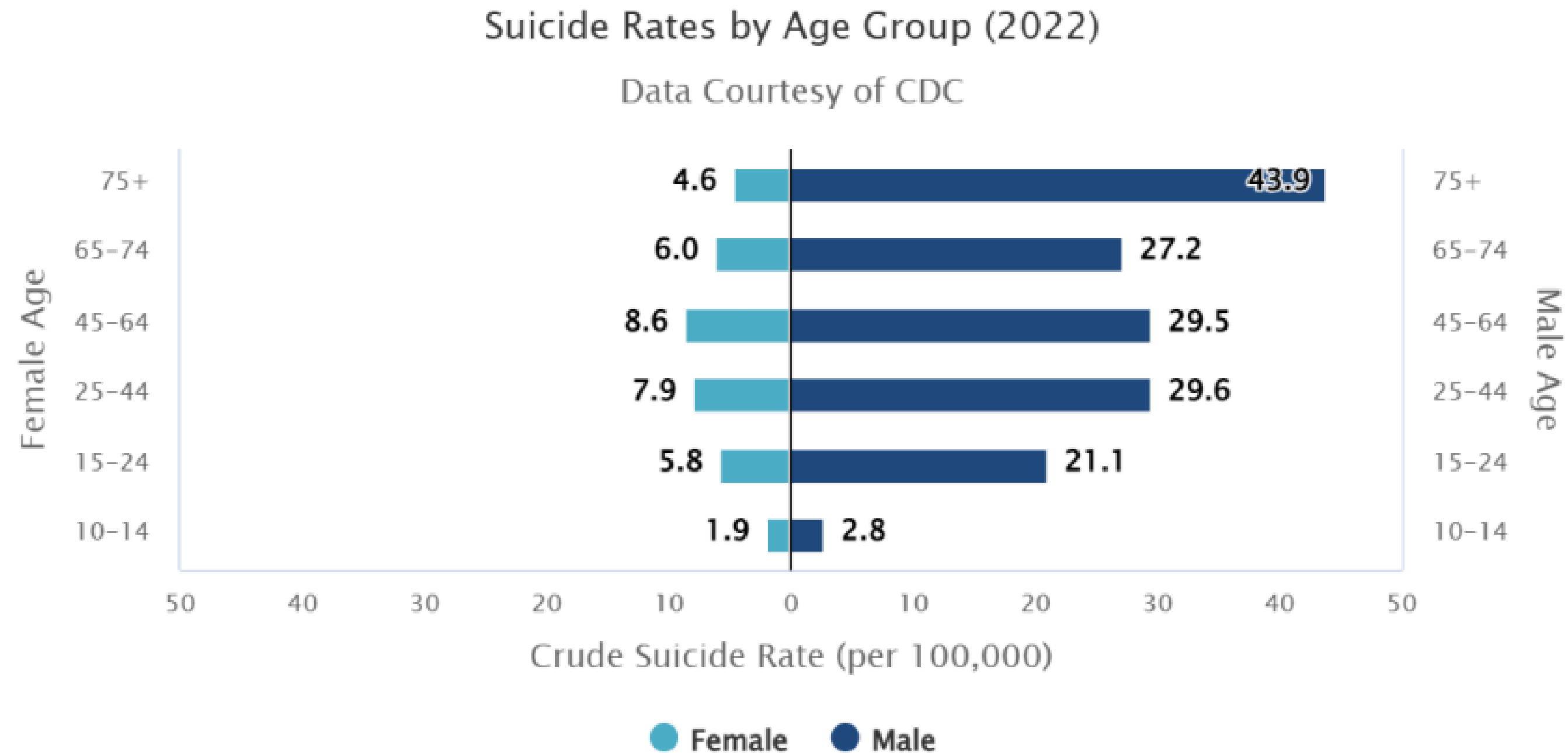
-988 Program Coordinator

## **Lorriane Thomas**

-Elder Services Coordinator  
Aleutian Pribilof Island Assoc.

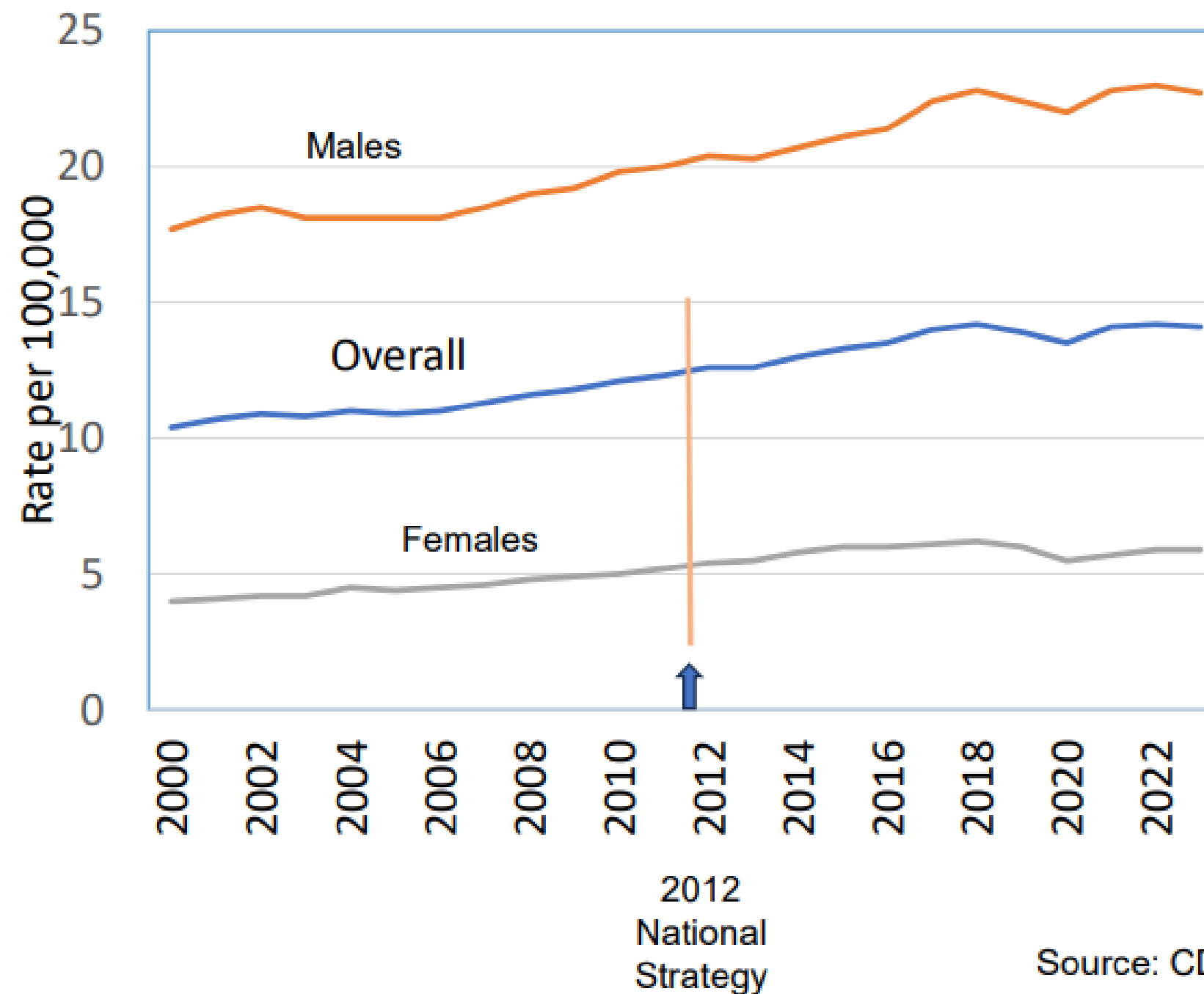


# 2022 US Suicide Rates by Age and Sex





## Why was a New, Updated National Strategy Needed?



### Between 2000-2023

- 28% Increase, males
- 36% Increase, overall
- 48% Increase, females

### Between 2012-2023

- 12% Increase, overall

Source: CDC WONDER; Courtesy Deb Stone



National Institute  
of Mental Health

# Profiles of Suicide Decedents 2003-2020: National Violent Death Reporting System

JAMA Psychiatry | Original Investigation

## Decoding Suicide Decedent Profiles and Signs of Suicidal Intent Using Latent Class Analysis

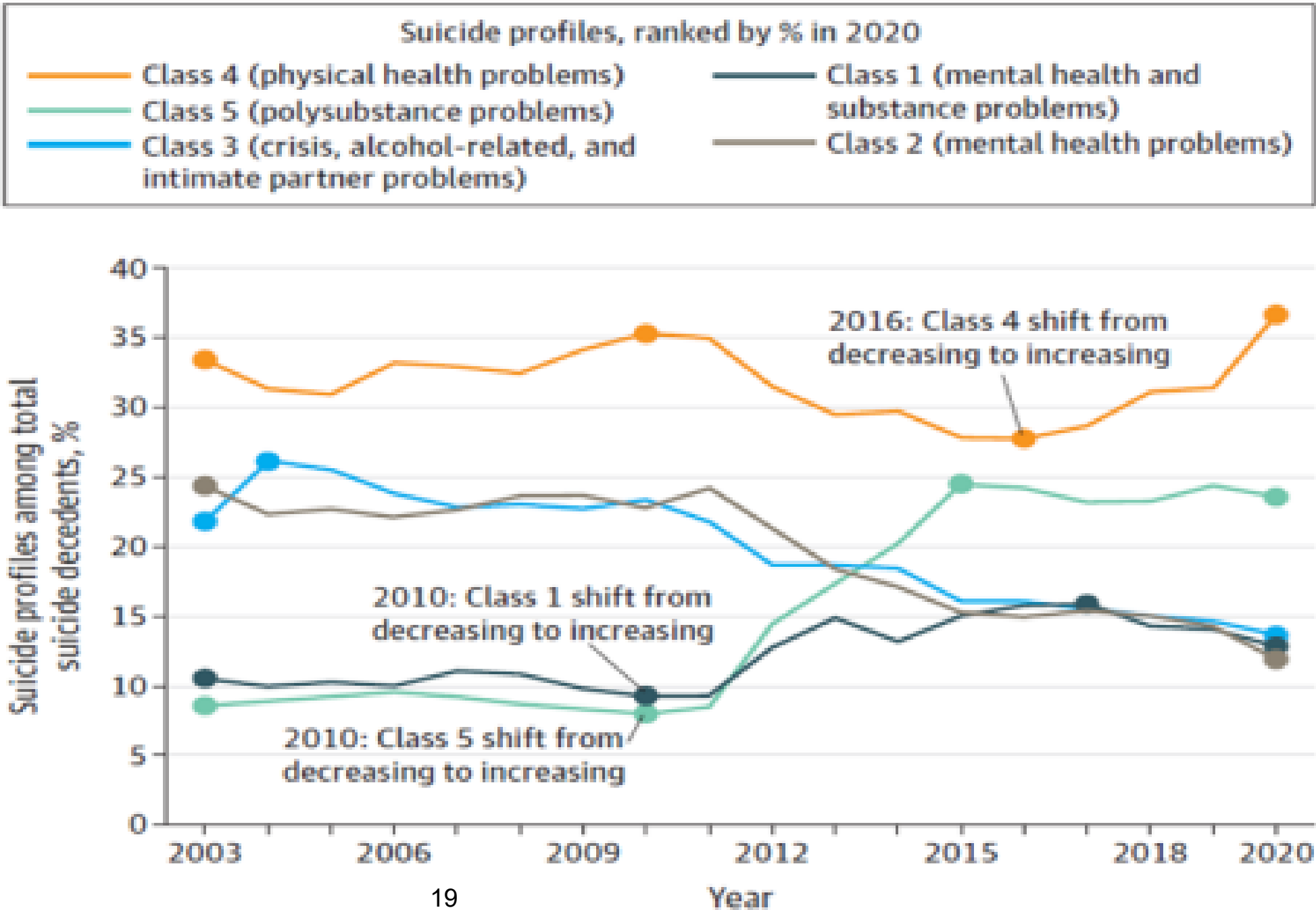
Yanyu Xiao, PhD; Kaiwen Bi, BA; Paul Siu-Fai Yip, PhD; Julie Cerrell, PhD; Timothy T. Brown, PhD; Yidan Peng, PhD;  
Jyotishman Parthak, PhD; J. John Mann, MD

### Class 4 Characteristics (%)

Less than 1% with known  
mental health history

84.6 Male  
81.8 White  
63.5 firearm method

27.4 rural  
24.5 aged 55-70  
(20.7 age 71+)  
22.9 veterans  
16.1 less than HS educ



# Older Adult Risk Factor NSDUH data--Example

## Binge Drinking by Older Adults in the United States



In 2023,  
**12%**

of people ages 65+  
reported that they  
engaged in binge  
drinking in the  
past month.

Source: 2023 NSDUH

### Alcohol and Older Adults Ages 65+

<https://www.niaaa.nih.gov/alcohols-effects-health/alcohol-topics-z/alcohol-facts-and-statistics/alcohol-and-older-adults-ages-65>

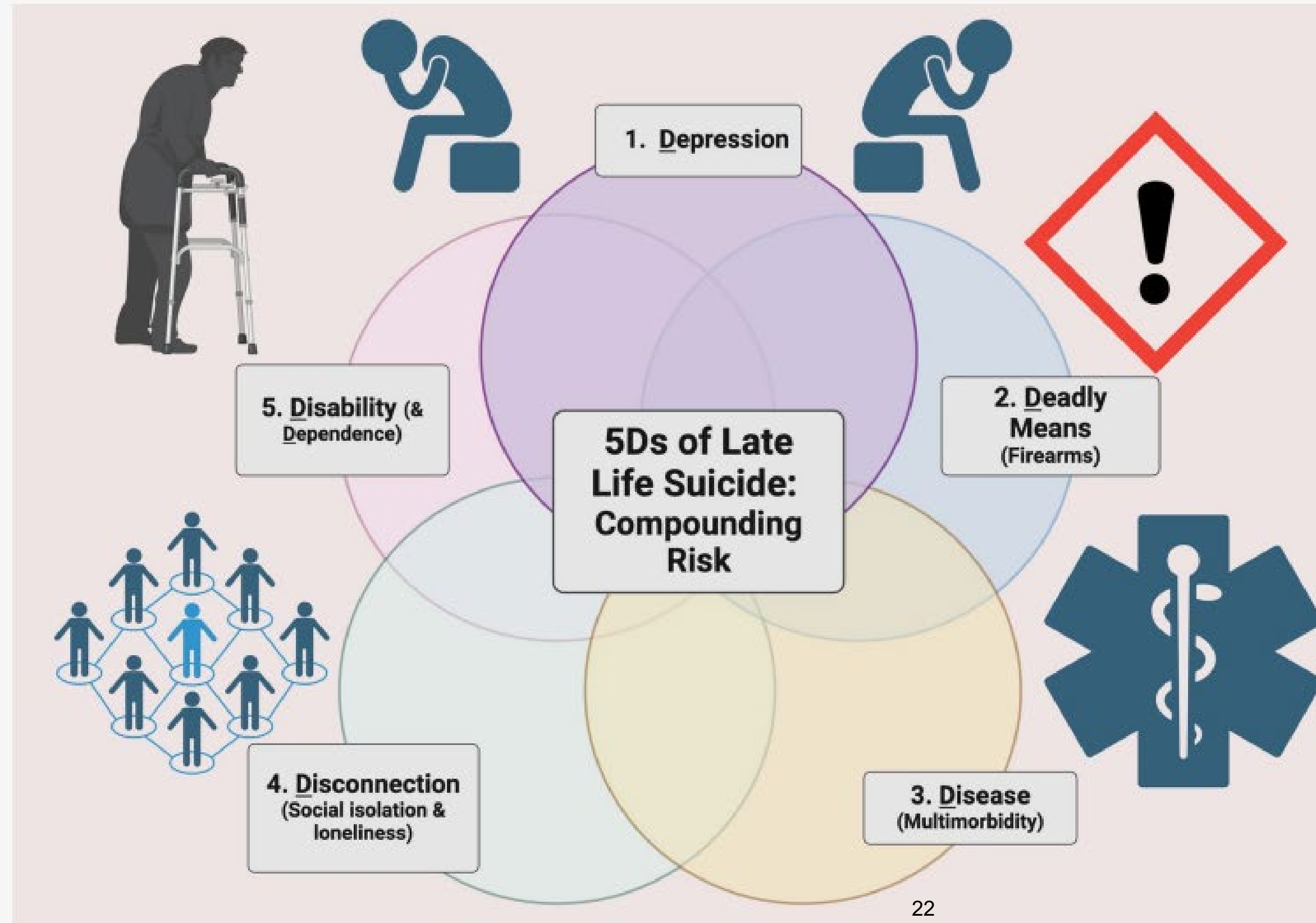
The percentage of people ages 65+ who consume alcohol each month increased by 16% between 2002-2019



# Rates and Numbers to Consider

- Starting in 2030, Americans age 65+ will make up 21% of the population; will outnumber children by 2034  
(Vespa et al., US Dept of Commerce 2018)
- Older adults are found to spend an average of 3 weeks per year at health appointments in 2019 (Ganguli, et al., 2024)
- What state statistics are available to you to understand older adult needs? E.g., Medicare utilization patterns linked to state mortality data
- What private partners have data of interest?  
E.g., AARP LIVABILITY INDEX™ PLATFORM Includes a **Health** Prevention, Access and Quality Rating. Milton VT is in the top half of cities participating in the network; data is from city planning commission. Each state has an AARP office.  
E.g., Assoc. of State & Territorial Health Officials (ASTHO) aligning state health, state aging, and Alzheimer's Disease strategic plans *and their measures*.

# The 5Ds of Late Life Suicide



Characteristics of  
older people who  
die by suicide

Compounding risk

Intervention targets

# Older Adult Suicide Prevention Policy Academy

## Alaska Team Goals

TEAM GOAL

DATA GOAL

STRATEGY GOAL

August 20-21, 2025



**SAMHSA**  
Substance Abuse and Mental Health  
Services Administration



# Fall Meeting Kodiak – October 14<sup>th</sup> & 15<sup>th</sup>

- Virtual

Join Zoom Meeting

<https://us02web.zoom.us/j/87921169795>

Meeting ID: 879 2116 9795

Passcode: 2025



## Data

- Public Testimony
- Pannel Interviews

## Planning

- Advocacy

## Advocacy

- Legislative Review
- Legislative Preparation
- Identify Goals







**ALASKA  
MENTAL HEALTH BOARD**

---

**ADVISORY BOARD ON  
ALCOHOLISM & DRUG ABUSE**

**STATUTORY ADVISOR UPDATE 2025**

Kermit E. Wilson Executive Director