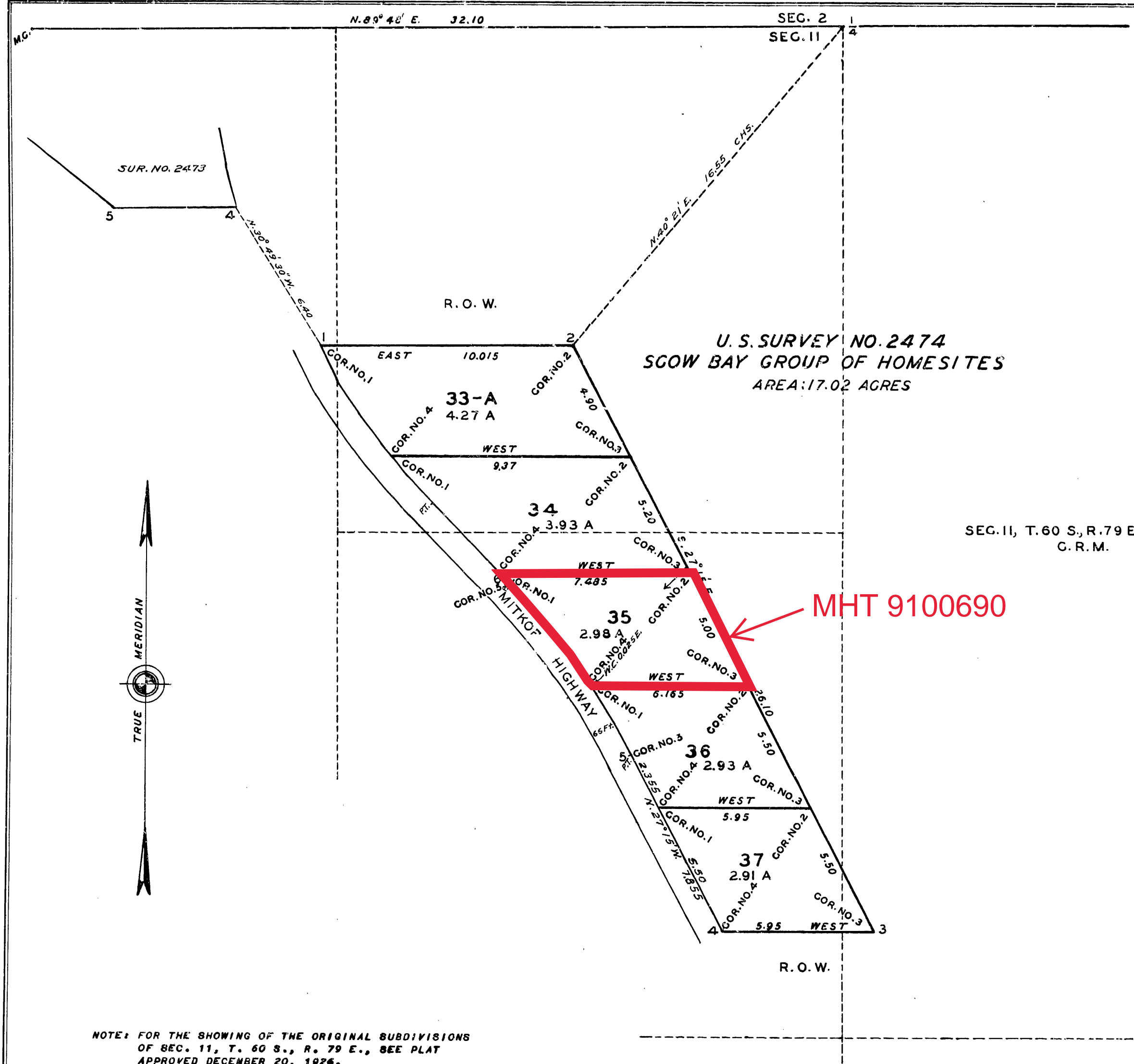


ORIGINAL



PLAT  
of  
U.S. SURVEY NO. 2474  
of the  
SGOW BAY GROUP OF HOMESITES

Executed under the Act of Congress,  
Approved MAY 26, 1934

situated  
IN LOTS 1 AND 2, THE N.E. 1/4 N.W. 1/4 AND THE N.E. 1/4 SEC. II,  
T. 60 S., R. 79 E., ON EAST SIDE OF MITKOF HIGHWAY,  
ABOUT 10 MILES S.E. OF PETERSBURG  
TERRITORY OF ALASKA

Area: 17.02 acres  
Declination: 31° 00' E.  
Scale: 3 chains to the inch  
Latitude 56° 41' N. Longitude 132° 50' W.

Survey executed by  
F. W. WILLIAMSON, CADASTRAL ENGINEER, G. L. O.  
AUGUST 26-27, 1939

CERTIFICATE OF APPROVAL  
PUBLIC SURVEY OFFICE  
Juneau, Alaska, JULY 22, 1940.

The original field notes of Survey No. 2474, of the  
SGOW BAY GROUP OF HOMESITES  
from which this plat has been made, have been examined  
and approved, and are on file in this office, and I hereby  
certify that they furnish such an accurate description of  
said claim as will, if incorporated into a patent, serve fully  
to identify the premises, and that such reference is made  
therein to natural objects and permanent monuments, as  
will perpetuate and fix the Locus thereof.  
And I further certify that this is a correct plat of  
said claim, made in conformity with said original field  
notes of the survey thereof, and the same is hereby ap-  
proved.

*Geo. A. Parks*  
District Cadastral Engineer

UNITED STATES  
DEPARTMENT OF THE INTERIOR  
GENERAL LAND OFFICE  
Washington, D.C., JUNE 27, 1941

The survey represented by this plat having been cor-  
rectly executed in accordance with the requirements of  
law and the regulations of this office, is hereby accepted.

*W. C. Howell*  
ACTING ASSISTANT COMMISSIONER

NOTE: FOR THE SHOWING OF THE ORIGINAL SUBDIVISIONS  
OF SEC. 11, T. 60 S., R. 79 E., SEE PLAT  
APPROVED DECEMBER 20, 1926.

MHT 9100690

158