

PLAT

of
U.S. SURVEY NO. 2528
of the

Trail Lake Group of Homesites
embracing

Lots 1 to 33 inclusive
Executed under the Act of Congress,
Approved May 14, 1896
Amended May 26, 1934
situated

at mile 29, Seward - Hope Highway between highway
and Alaska Railroad, and on west side of highway
TERRITORY OF ALASKA

Net Area of Lots: 144.56 acres
Area: 164.16 acres
Declination: 28°15' E
Scale: 5 chains to the inch
Longitude 149°21' W

Survey executed by
F. W. Williamson, Associate Cadastral Engineer
August 29 to October 2, 1941

CERTIFICATE OF APPROVAL PUBLIC SURVEY OFFICE

The original field notes of Survey No. 2528, of the
Juneau, Alaska, Nov. 27, 1943.

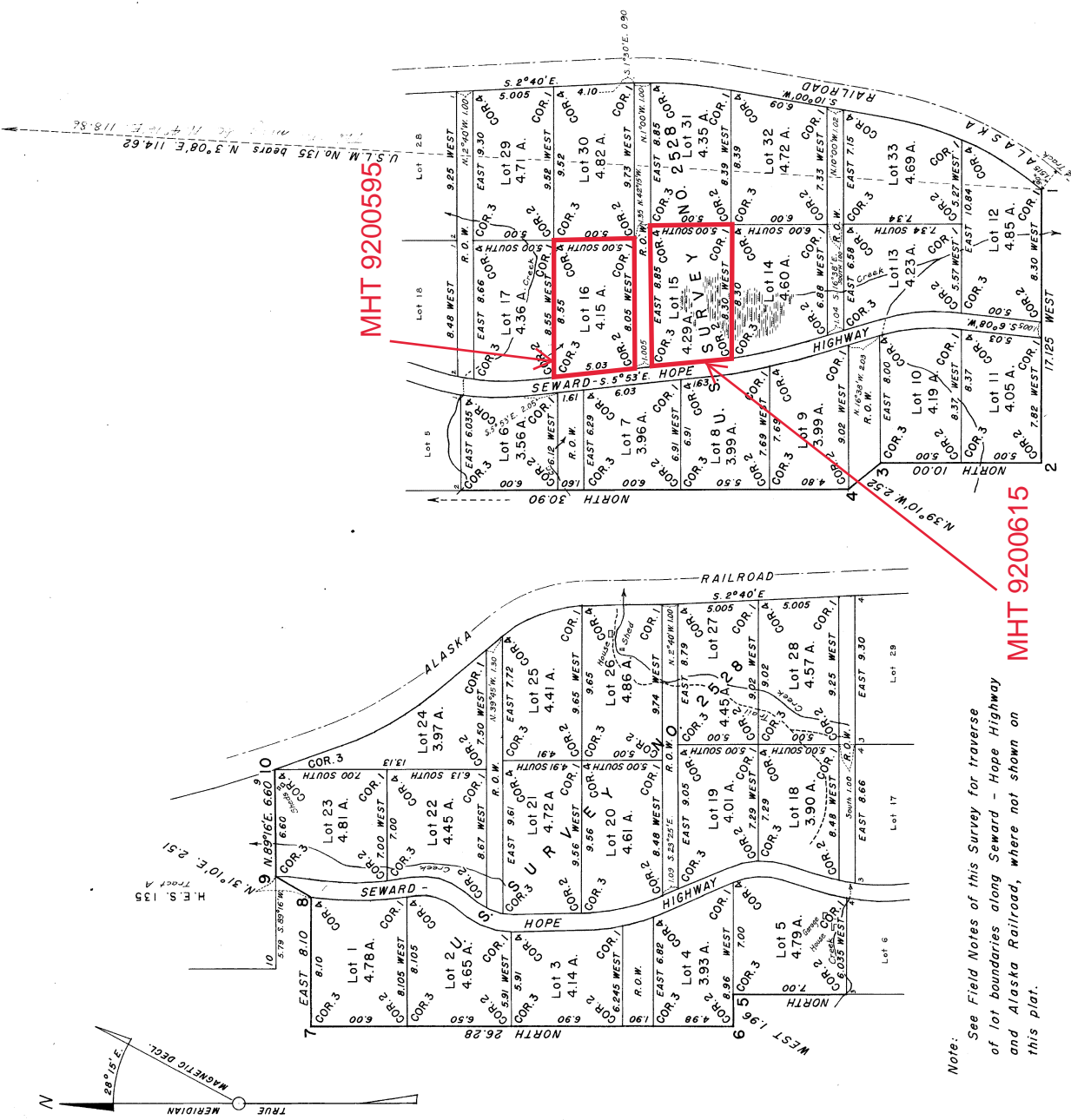
Trail Lake Group of Homesites embracing
Lots 1 to 33 inclusive
from which this plat has been made, have been examined
and approved, and are on file in this office, and I hereby
certify that they furnish such an accurate description of
said claim as will, if incorporated into a patent, serve fully
to identify the premises, and that such reference is made
therein to natural objects and permanent monuments, as
will perpetuate and fix the locus thereof.
And I further certify that this is a correct plat of
said claim, made in conformity with said original field
notes of the survey thereof, and the same is hereby ap-
proved.

Geo. A. Parker
District Cadastral Engineer

UNITED STATES
DEPARTMENT OF THE INTERIOR
GENERAL LAND OFFICE
Washington, D.C., April 23, 1945

The survey represented by this plat having been cor-
rectly executed in accordance with the requirements of
law and the regulations of this office, is hereby accepted.

Joel Ward Wolfson
Assistant Commissioner.



Note: See Field Notes of this Survey for traverse
of lot boundaries along Seward - Hope Highway
and Alaska Railroad, where not shown on
this plat.