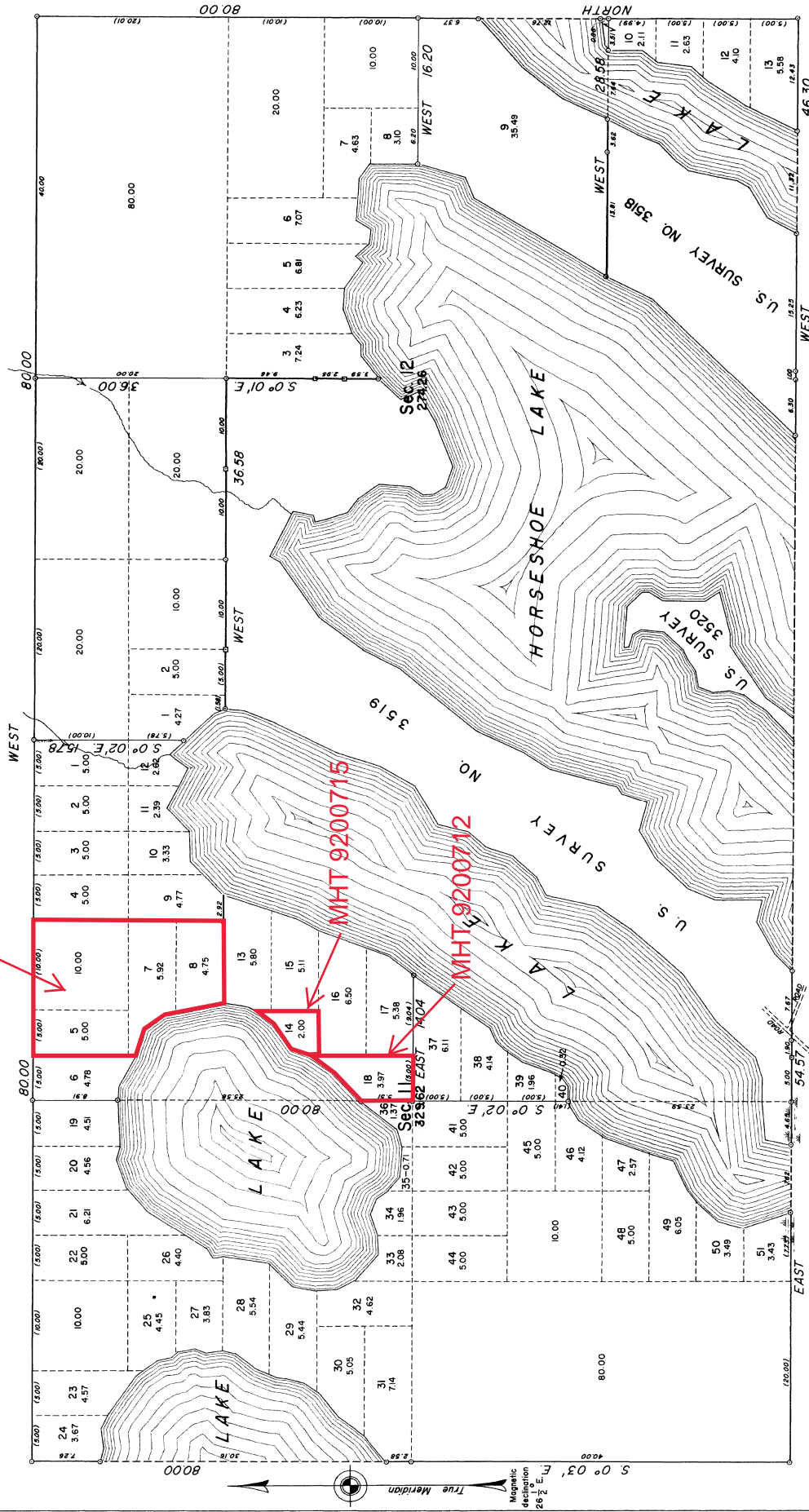


TOWNSHIP 17 NORTH, RANGE 4 WEST, OF THE SEWARD MERIDIAN, ALASKA

MHT 9200756



This plat represents a portion of the extension survey, the dependent resurvey of a portion of the East boundary of the township and the partial subdivision of secs. 11 and 12, executed by Robert B. Hyatt, Cartographer (Cadastral), during the period August 15, 1985 to April 17, 1987, under Special Instructions for Group No. 76, Alaska, dated July 15, 1949.

U. S. Survey Nos. 3518, 3519, and 3520 were executed concurrently with the establishment of the rectangular surveys in secs. 11 and 12. The previous surveys in this township are shown upon the plats accepted March 27, 1982.

Scale in Chains: 0, 5, 10, 20, 30, 40

Legend:
 ○ INDICATES AN IRON POST WITH BRASS CAP
 □ INDICATES A WOODEN POST

Area Surveyed 603.88 Acres

UNITED STATES DEPARTMENT OF THE INTERIOR
 BUREAU OF LAND MANAGEMENT
 Washington, D. C. January 13, 1989

This plat is strictly conformable to the approved field notes, and the survey having been correctly executed in accordance with the requirements of law and the regulations of this Bureau, is hereby accepted.

For the Director:
April G. Harrington
 Cadastral Engineering Staff Officer