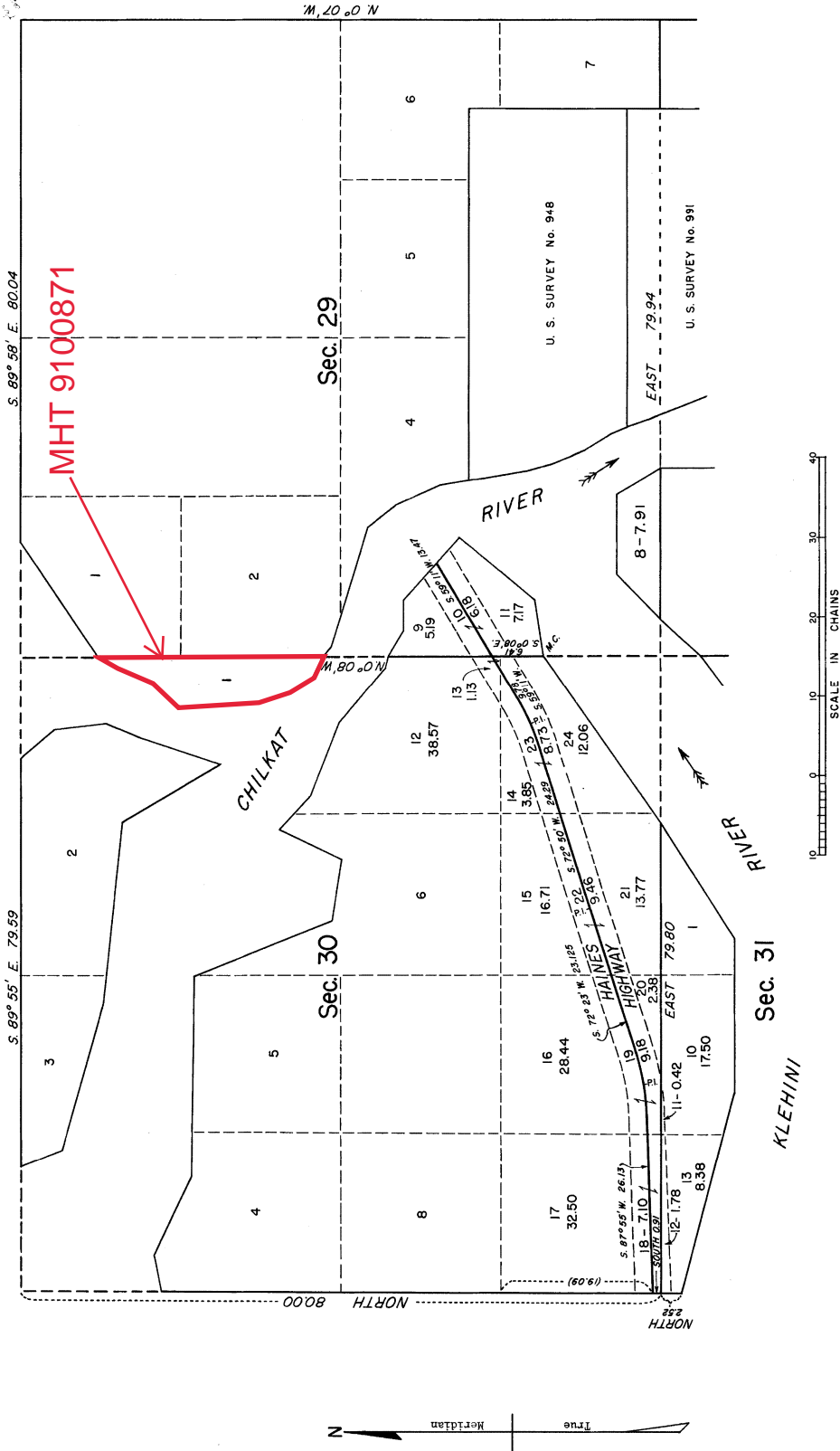


TOWNSHIP 28 SOUTH, RANGE 56 EAST, OF THE COPPER RIVER MERIDIAN, ALASKA  
SEGREGATION OF HIGHWAY RIGHT OF WAY



Segregation of Haines Highway Right-of-Way, 300 feet wide, 150 feet on each side of the surveyed center line. This center line survey executed by Jack C. Means, Cadastral Engineer, October 12, 1950 under Assignment Instructions dated August 11, 1950.

Boundary, subdivisional and meander lines were surveyed by E. C. Guerin in 1919 and E. D. Calvin in 1924, under Special Instructions for Group 12, Alaska.

Area of lots within and adjoining the highway right-of-way were computed with a planimeter and adjusted to the original areas.

For highway center line survey data, see field notes.

In order to remove the duplication of lot 1, sec. 29, shown on plat 104 by B-192 and on plat 28, 1926, the subdivision thus shown on the former plat is amended hereon to lot 8.

UNITED STATES  
DEPARTMENT OF THE INTERIOR  
BUREAU OF LAND MANAGEMENT  
Washington, D. C., July 23, 1953

This plat is strictly conformable to the approved field notes, and the survey, having been correctly executed in accordance with the requirements of law and the regulations of this Bureau, is hereby accepted.

For the Administrator

*Donald O. Conant*  
Assistant Chief, Division of  
Cadastral Engineering