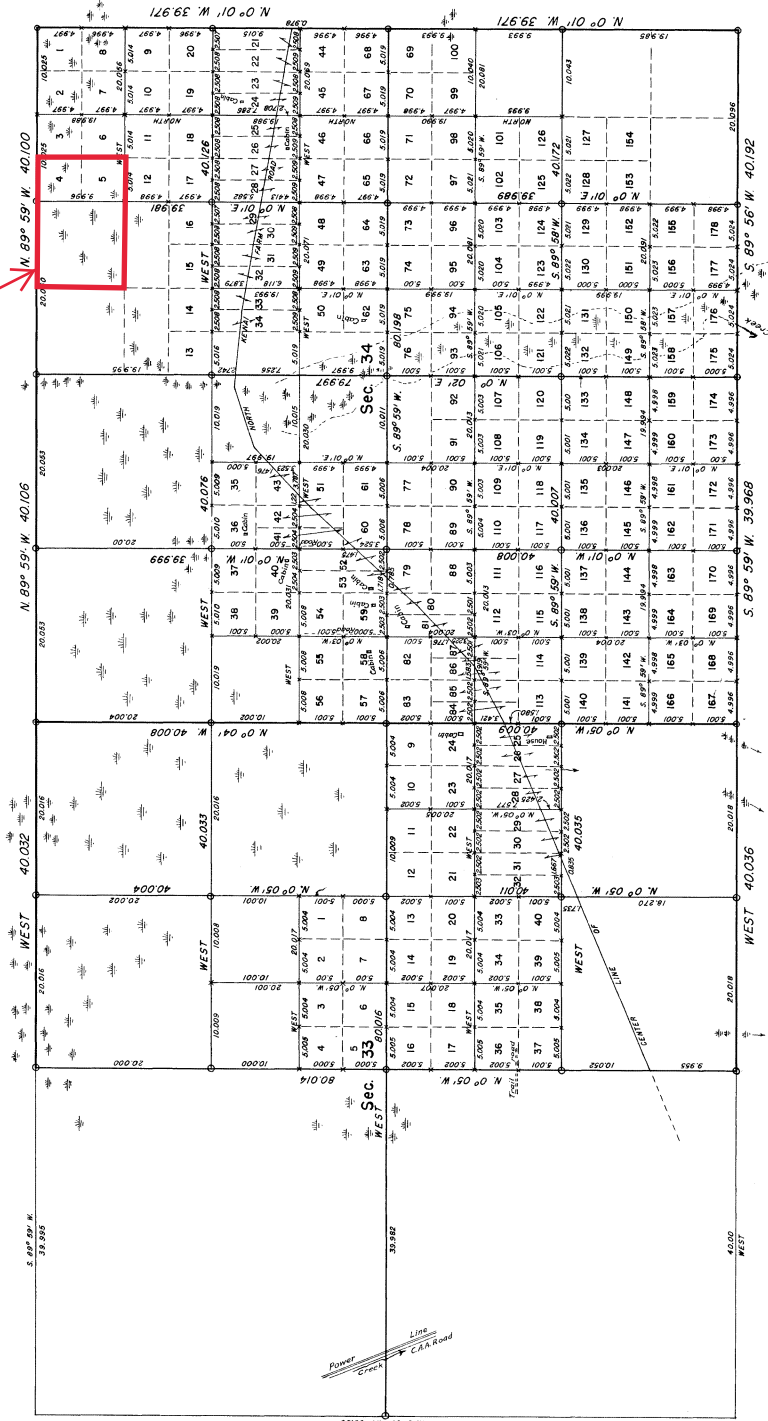


TOWNSHIP 6 NORTH, RANGE II WEST, OF THE SEWARD MERIDIAN, ALASKA
DEPENDENT RESURVEY AND SUBDIVISION OF SECTIONS 33 AND 34

MHT 9200754



O indicates an iron post.
 x indicates a wooden post.

Area resurveyed: 960 acres
 SCALE IN CHAINS

UNITED STATES DEPARTMENT OF THE INTERIOR
 BUREAU OF LAND MANAGEMENT
 Washington, D. C. June 24, 1954

This plat is strictly conformable to the approved field notes, and the survey, having been correctly executed in accordance with the requirements of law and the regulations of this Bureau, is hereby accepted.

For the Director

Gordon W. Webber
 Acting Chief, Division of
 Cadastral Engineering

This plat represents a retracement and reestablishment of the boundaries of Sec. 34 and a portion of Sec. 33 designed to restore the corners in their original locations according to the best available evidence and a subdivision of the sections. Reference will be made to plats accepted June 9, 1922 and May 6, 1941 for descriptions and areas except as new lottings are shown hereon. All numbered lots on this plat each contain 2.50 acres.

Resurvey and survey executed by Gordon W. Webber, Cartographer (Cadastral), September 16 to October 17, 1953 under special instructions for Group 50.