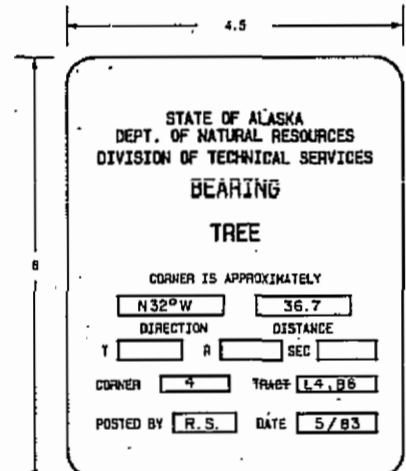
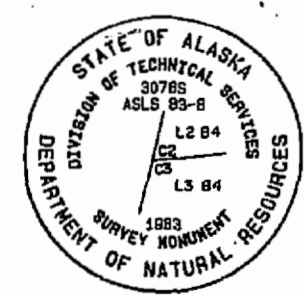


# LEGEND

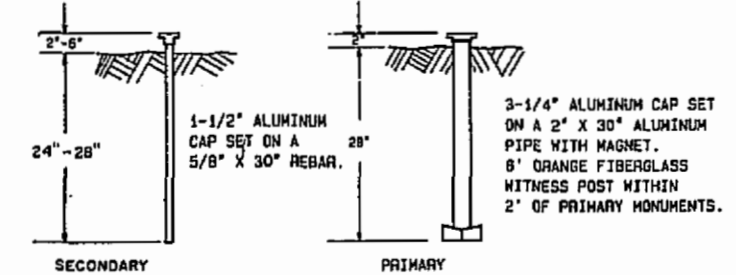
- GEODETTIC CONTROL MONUMENT RECOVERED
- PRIMARY ALUMINUM CAP MONUMENT SET (DTS)
- SECONDARY MONUMENT SET
- 50' PUBLIC ACCESS EASEMENT ALONG SHORELINE
- 20' PEDESTRIAN & UTILITY EASEMENT
- 30' ACCESS & UTILITY EASEMENT
- EAGLE TREE
- 20' UTILITY EASEMENT.



TYPICAL BEARING TREE TAG

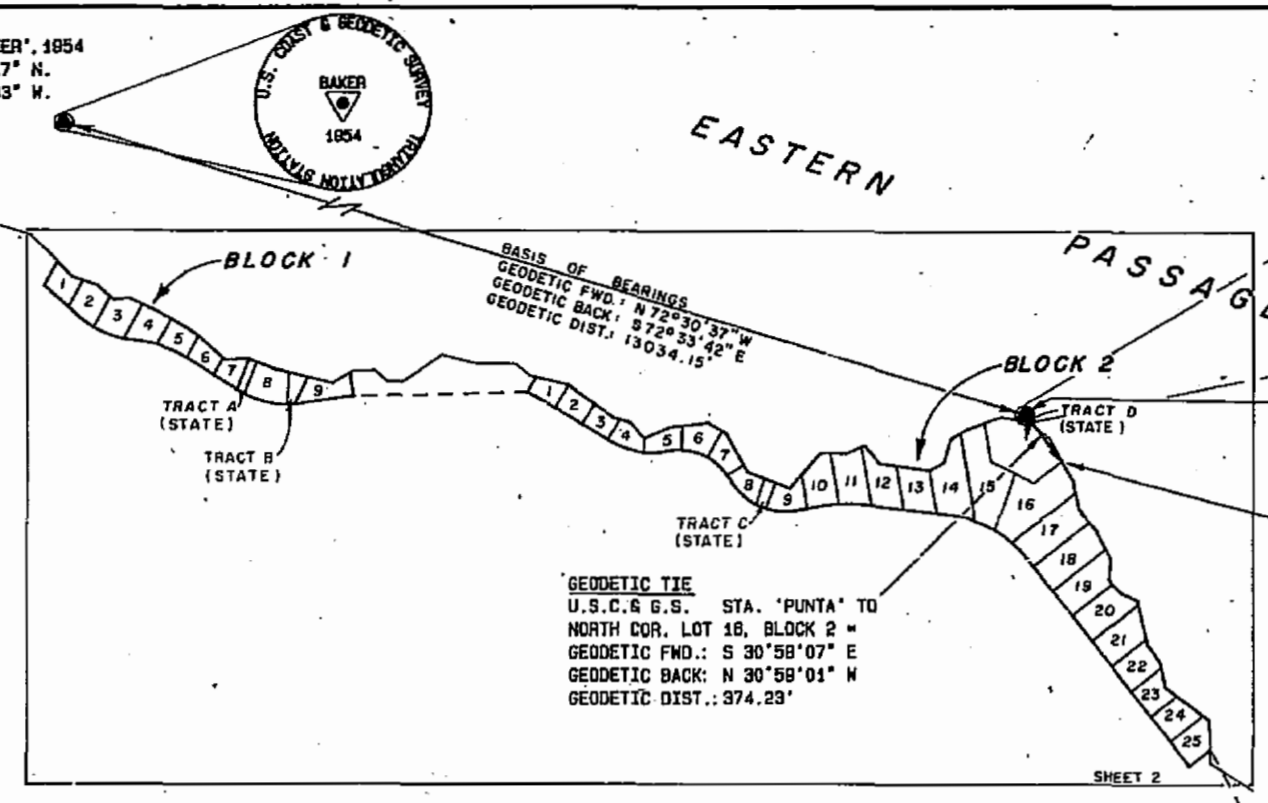


TYPICAL PRIMARY MONUMENT MARKINGS TYPICAL SECONDARY MONUMENT MARKINGS



TYPICAL MONUMENT SETTINGS

U.S.C. & G.S. STA. "BAKER", 1954  
LATITUDE 58° 28' 23.717" N.  
LONGITUDE 132° 20' 21.343" W.  
1927 NAD



'BASIS OF COORDINATES:  
U.S.C. & G.S. STA "PUNTA", 1918  
LATITUDE 58° 27' 45.171" N.  
LONGITUDE 132° 18' 40.008" W.  
1927 NAD

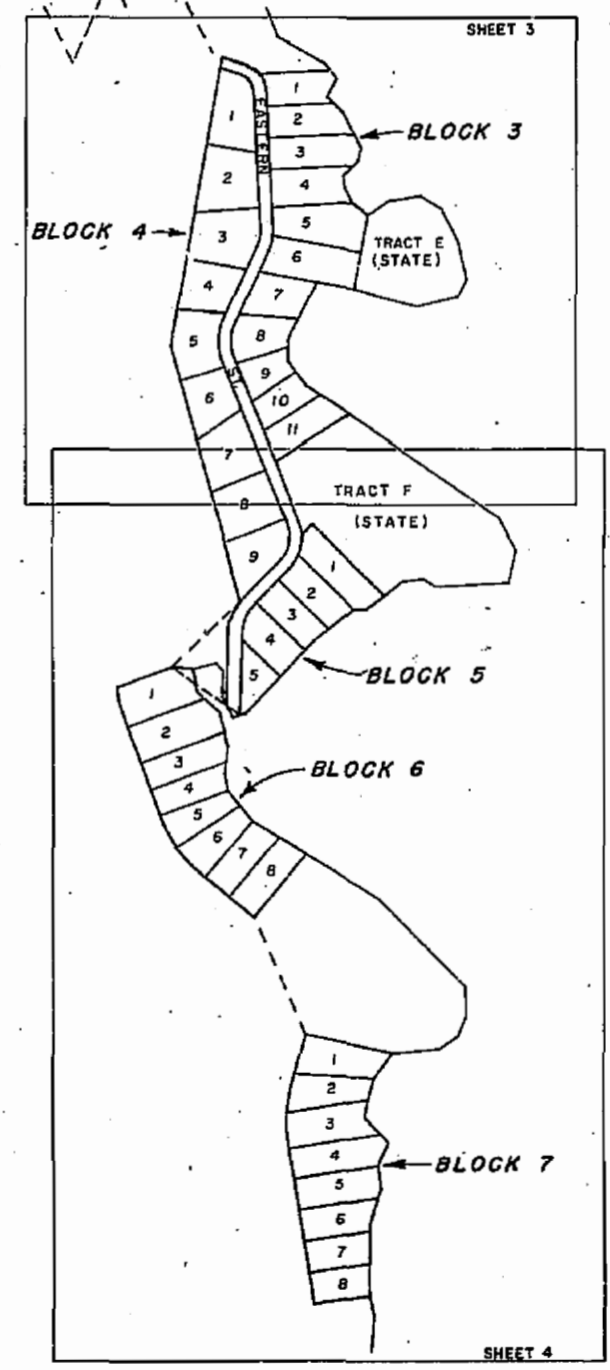
NORTH COR. LOT 18, BLOCK 2  
LATITUDE 58° 27' 42.010" N.  
LONGITUDE 132° 18' 38.570" W.  
1927 NAD

APPROXIMATE MEAN DECLINATION (1953)  
FROM U.S.G.S. PETERSBURG  
(8-5), ALASKA

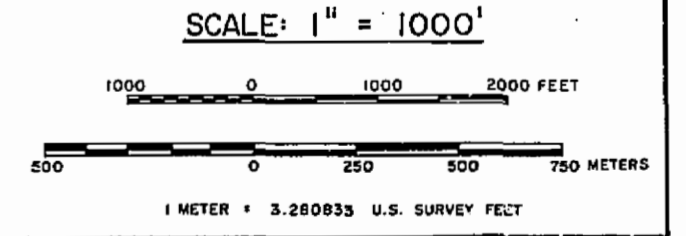
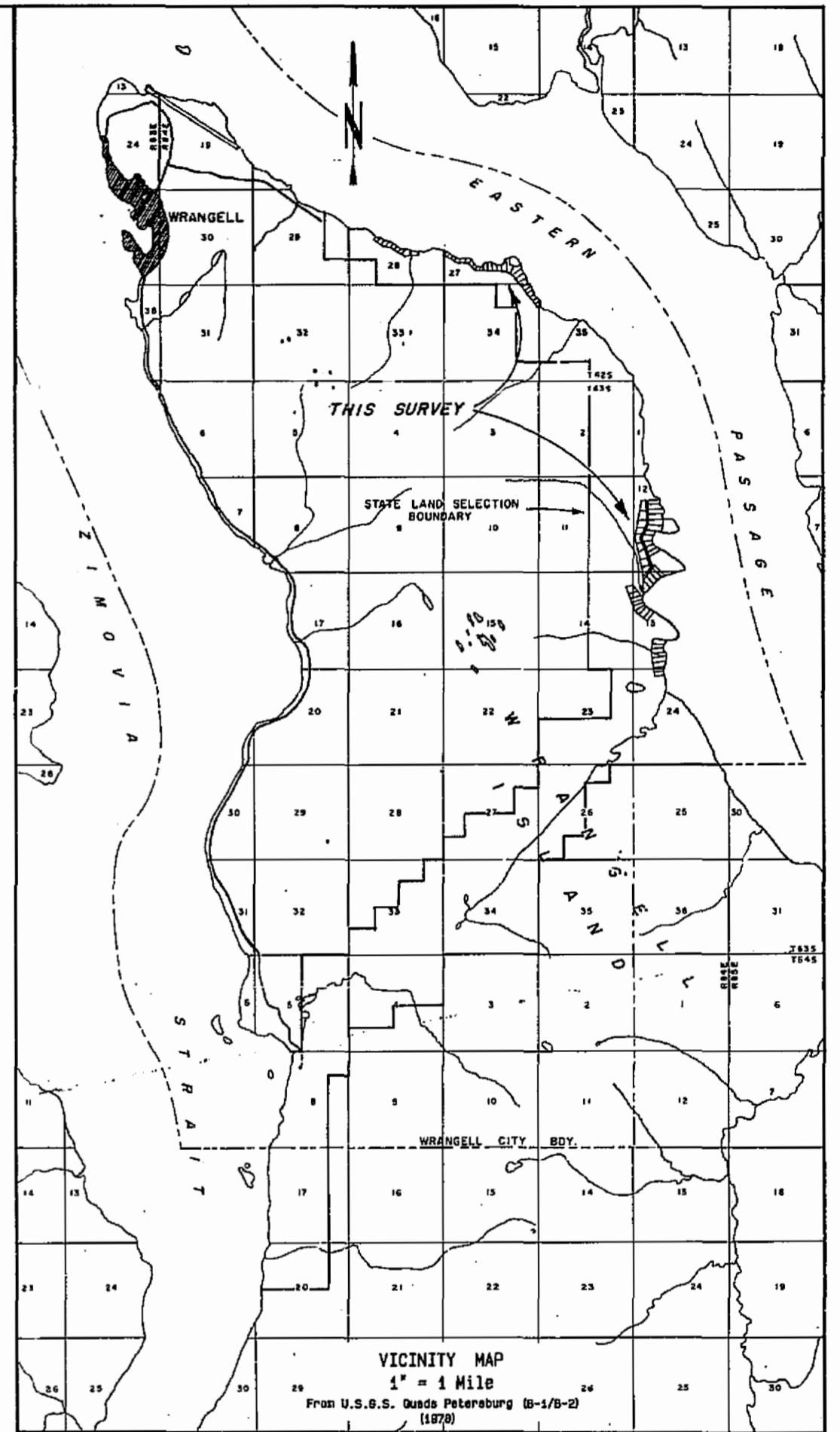
NOTE - ALL LANDS IMMEDIATELY ADJACENT TO THIS SURVEY ARE OWNED BY THE STATE OF ALASKA.

### AREA SUMMARY

Block 1	Lots 1 through 9	12.613 acres
Block 2	Lots 1 through 25	51.863 acres
Block 3	Lots 1 through 11	39.848 acres
Block 4	Lots 1 through 9	39.889 acres
Block 5	Lots 1 through 5	16.036 acres
Block 6	Lots 1 through 8	28.844 acres
Block 7	Lots 1 through 8	28.637 acres
Total Lots = 75		217.528 acres
R.O.W. =		12.978 acres
Tracts A through F =		53.931 acres
Water Bodies =		
Total Gross =		284.435 acres
Total Net =		284.435 acres



SELECTION INFORMATION  
N.F.C.G. 116  
Tentative Approval dated 4-28-82



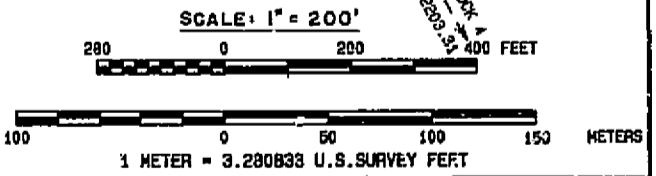
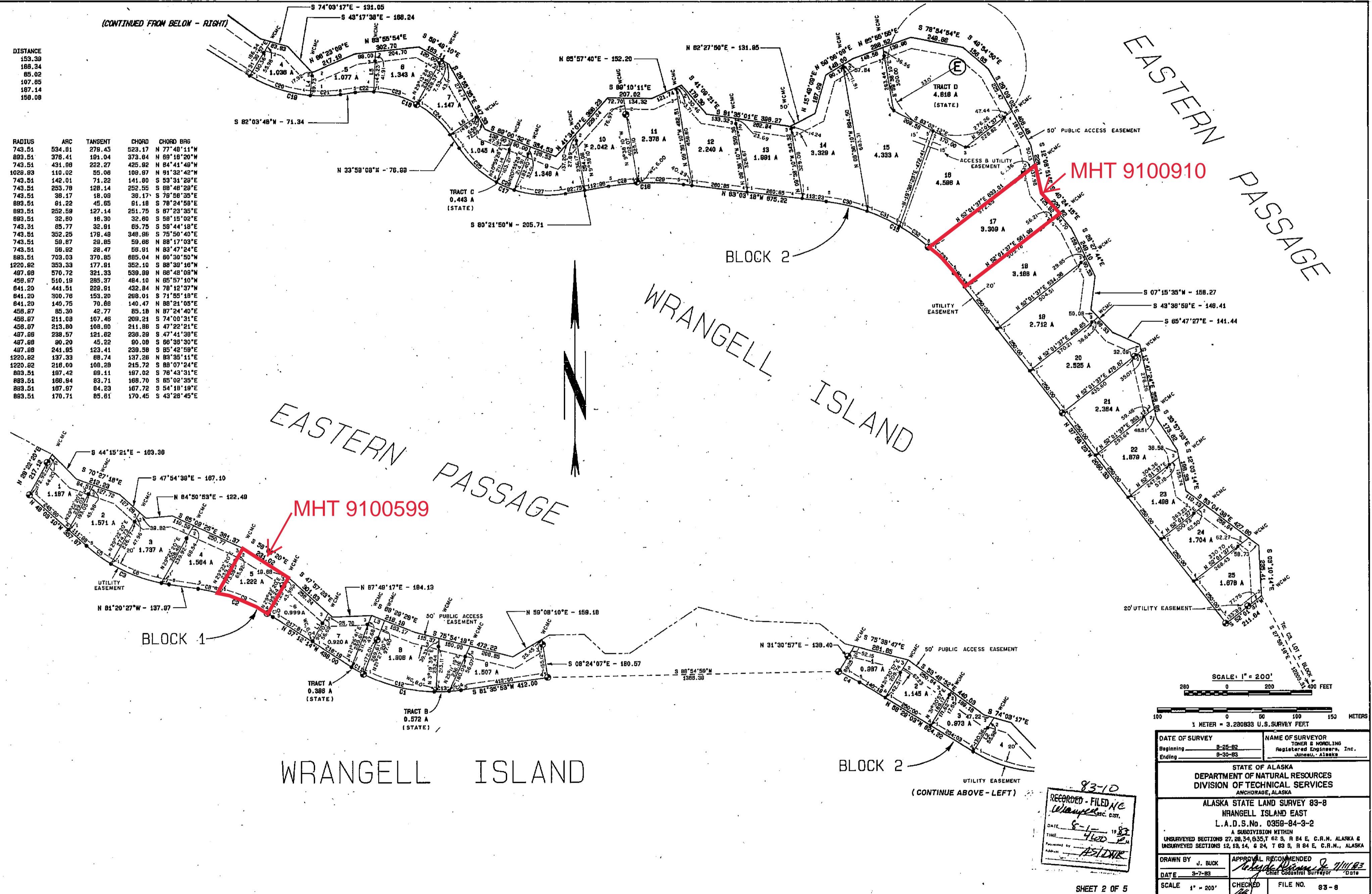
83-10  
RECORDED - FILED  
WRANGELL, ALASKA  
DATE 8-1-83  
BY 41002  
ANCHORAGE, ALASKA  
Att: M. Kullberg

DATE OF SURVEY Beginning 8-25-82 Ending 6-30-83	NAME OF SURVEYOR TONER & HORNUNG Registered Engineers, Inc. ANCHORAGE, ALASKA
STATE OF ALASKA DEPARTMENT OF NATURAL RESOURCES DIVISION OF TECHNICAL SERVICES ANCHORAGE, ALASKA	
ALASKA STATE LAND SURVEY 83-8 WRANGELL ISLAND EAST L.A.D.S.No. 0358-84-3-2 A SUBDIVISION WITHIN UNSURVEYED SECTIONS 27, 28, 34 & 35, T 62 S, R 84 E, C.R.N. ALASKA & UNSURVEYED SECTIONS 12, 13, 14, & 24, T 63 S, R 84 E, C.R.N., ALASKA	
DRAWN BY J. BUCK DATE 2-3-83 SCALE 1" = 1000'	APPROVAL RECOMMENDED M. Kullberg District Chief Surveyor DATE FILE NO. 83-8

(CONTINUED FROM BELOW - RIGHT)

LINE	BEARING	DISTANCE
1	N 29°22'20"E	153.39
2	S 31°30'57"W	189.34
3	S 88°28'28"E	85.02
4	N 64°38'28"E	107.55
5	N 00°48'30"E	167.14
6	N 58°01'52"E	159.08

CURVE	DELTA	RADIUS	ARC	TANGENT	CHORD	CHORD BRG
1	41°11'52"	743.51	594.81	279.45	523.17	N 77°48'11"W
2	24°09'14"	893.51	376.41	181.04	373.04	N 99°18'20"W
3	33°17'18"	743.51	431.08	222.27	425.82	N 84°41'48"W
4	6°07'13"	1028.93	110.02	55.06	109.87	N 91°32'42"W
5	10°58'38"	743.51	142.01	71.22	141.80	S 53°31'29"E
6	18°33'23"	743.51	263.78	128.14	252.95	S 88°48'29"E
7	2°47'15"	743.51	38.47	18.08	38.17	S 78°58'25"E
8	6°50'57"	893.51	81.22	45.85	81.18	S 78°24'55"E
9	16°11'31"	893.51	282.58	127.14	251.75	S 87°23'35"E
10	2°05'27"	893.51	32.80	16.30	32.80	S 88°15'02"E
11	5°04'08"	743.51	85.77	32.81	85.75	S 59°44'19"E
12	37°08'40"	743.51	352.25	178.48	348.86	S 75°58'40"E
13	4°38'34"	743.51	59.87	29.85	59.88	N 88°17'03"E
14	4°23'11"	743.51	56.82	28.47	56.81	N 83°47'24"E
15	45°04'54"	893.51	703.03	370.85	685.04	N 80°30'50"W
16	18°34'53"	1220.82	383.33	177.81	382.10	N 88°39'10"W
17	85°40'04"	487.89	570.72	321.33	539.89	N 88°45'08"W
18	88°58'05"	459.87	510.19	285.97	484.10	N 85°57'10"W
19	38°27'07"	841.20	441.51	228.81	432.84	N 78°12'37"W
20	28°52'28"	841.20	300.76	153.20	288.01	S 71°55'18"E
21	12°34'37"	841.20	140.75	70.88	140.47	N 88°21'05"E
22	10°41'42"	459.87	85.30	42.77	85.18	N 87°24'40"E
23	38°27'58"	459.87	211.08	107.48	209.21	S 74°00'21"E
24	28°48'25"	459.87	213.80	108.80	211.88	S 47°22'21"E
25	27°27'00"	487.89	238.57	121.82	238.28	S 47°41'38"E
26	10°22'44"	487.89	90.20	45.22	90.08	S 88°38'30"E
27	27°58'20"	487.89	241.85	123.41	239.58	S 85°42'59"E
28	6°28'41"	1220.82	157.33	88.74	157.28	N 83°35'11"E
29	10°08'12"	1220.82	216.00	108.28	215.72	S 88°07'24"E
30	12°38'34"	893.51	187.42	89.11	187.02	S 78°43'31"E
31	10°42'17"	893.51	188.94	83.71	188.70	S 85°02'35"E
32	10°48'15"	893.51	187.87	84.23	187.72	S 54°19'19"E
33	10°58'47"	893.51	170.71	85.81	170.45	S 43°28'45"E

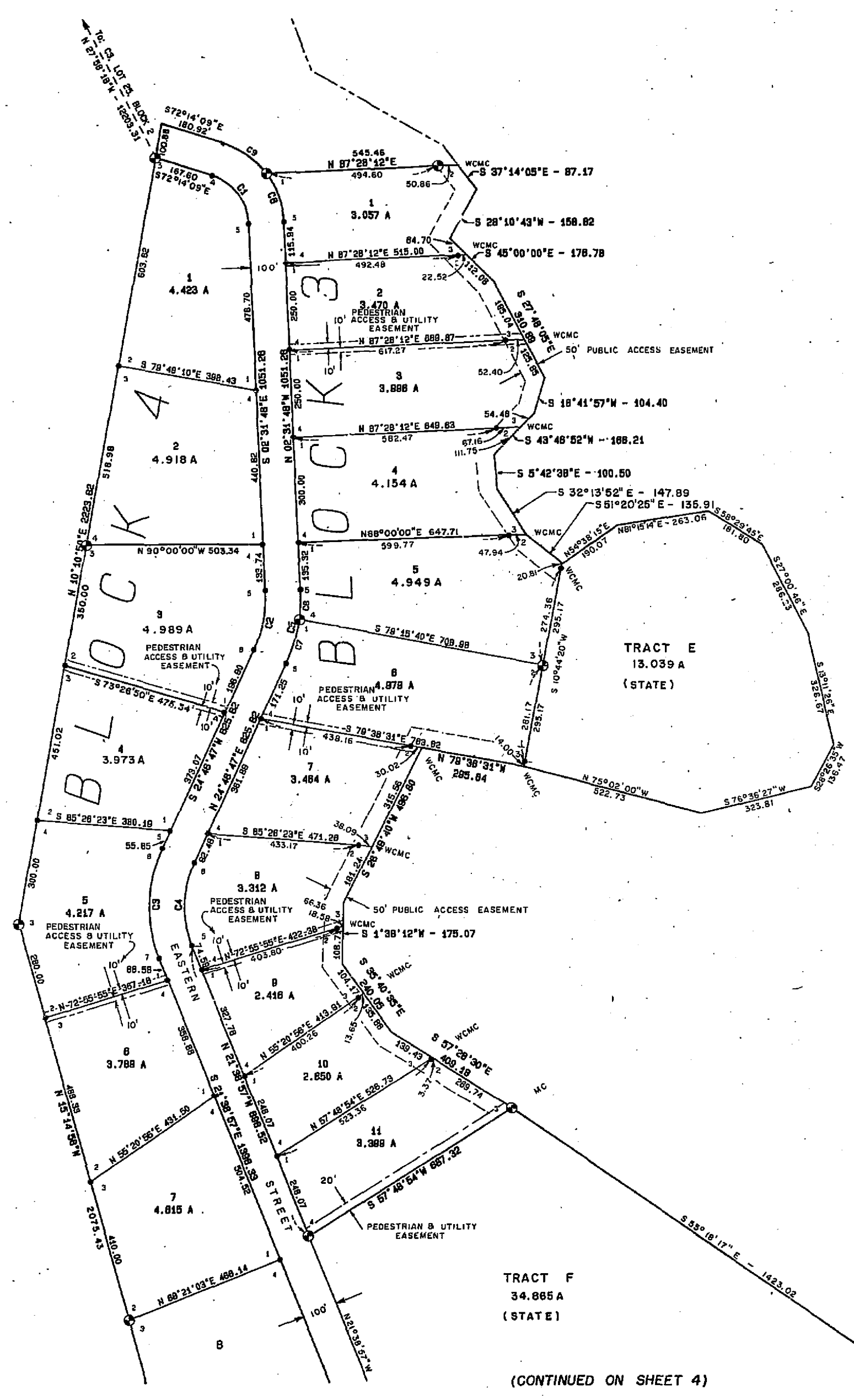


DATE OF SURVEY Beginning 8-25-82 Ending 8-30-82	NAME OF SURVEYOR TONER & MORLING Registered Engineers, Inc. Anchorage, Alaska
STATE OF ALASKA DEPARTMENT OF NATURAL RESOURCES DIVISION OF TECHNICAL SERVICES ANCHORAGE, ALASKA	
ALASKA STATE LAND SURVEY 83-8 WRANGELL ISLAND EAST L.A.D.S.No. 0350-84-3-2 A SUBDIVISION WITHIN UNSURVEYED SECTIONS 27, 28, 34, 35, 62 S, R 84 E, C.R.M. ALASKA & UNSURVEYED SECTIONS 12, 13, 14, 24, T 83 S, R 84 E, C.R.M., ALASKA	
DRAWN BY J. BUCK DATE 3-7-83	APPROVAL RECOMMENDED <i>[Signature]</i> Chief Control Surveyor DATE 1/11/83
SCALE 1" = 200'	CHECKED <i>[Signature]</i> FILE NO. 83-8

83-10  
RECORDED - FILED  
Wrangell, Alaska  
DATE 6-1-83  
TIME 4:00 PM  
BY *[Signature]*



WRANGELL ISLAND



EASTERN PASSAGE

CURVE	DELTA	RADIUS	ARC	TANGENT	CHORD	CHORD BRG
1	89°42'21"	151.04	193.75	105.18	172.69	S 37°22'58"E
2	27°18'05"	351.53	172.37	87.85	170.74	S 11°07'28"W
3	46°25'44"	398.73	323.82	171.44	315.13	S 01°33'55"W
4	46°25'44"	288.73	242.88	128.55	238.28	N 01°33'55"E
5	27°18'35"	481.88	220.03	142.16	247.85	N 11°07'28"E
6	33°53'45"	251.04	148.51	78.50	149.38	N 18°28'41"W
7	18°43'55"	481.83	134.81	87.89	134.33	N 18°24'48"E
8	10°34'40"	481.83	85.22	42.73	85.10	N 02°45'32"E
9	25°46'38"	251.04	156.90	81.11	154.38	N 54°19'51"W

TRACT F  
34.885 A  
(STATE)

(CONTINUED ON SHEET 4)

SCALE: 1" = 200'

1 METER = 3.280833 U.S. SURVEY FEET

DATE OF SURVEY	NAME OF SURVEYOR
Beginning 8-25-82	TONER & HODOLING
Ending 8-30-85	Registered Engineers, Inc.
	SUNNYSIDE, ALASKA

STATE OF ALASKA  
DEPARTMENT OF NATURAL RESOURCES  
DIVISION OF TECHNICAL SERVICES  
ANCHORAGE, ALASKA

ALASKA STATE LAND SURVEY 83-8  
WRANGELL ISLAND EAST  
L.A.D.S.No. 6359-84-3-2  
A SUBDIVISION WITHIN  
UNSURVEYED SECTIONS 27, 28, 34 & 35, T 62 S, R 84 E, C.R.M. ALASKA &  
UNSURVEYED SECTIONS 12, 13, 14, & 24, T 63 S, R 84 E, C.R.M., ALASKA

DRAWN BY J. BUCK	APPROVAL
DATE 3-7-88	RECOMMENDED
SCALE 1" = 200'	CHECKED
	FILE NO. 83-8

RECORDED - FILED  
83-8  
DATE 4-10-88  
FILED

WRANGELL ISLAND

WRANGELL ISLAND

EASTERN PASSAGE

EASTERN PASSAGE

(CONTINUED FROM SHEET 3)

(CONTINUE FROM BELOW - LEFT)

TRACT F  
34,865 A  
(STATE)

BLOCK 3

BLOCK 6

BLOCK 4

BLOCK 5

BLOCK 6

BLOCK 7

BLOCK 8

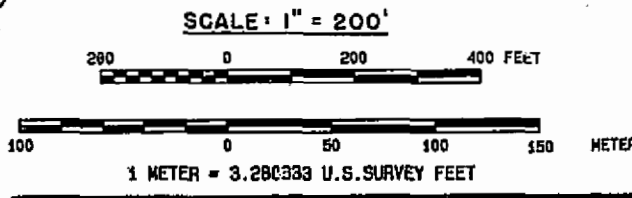
BLOCK 9

MHT 9100784

MHT 9100786

MHT 9100913

CURVE	DELTA	RADIUS	ARC	TANGENT	CHORD	CHORD BRG
1	30°25'20"	1070.72	589.52	261.13	581.88	N 35°07'49"N
2	12°27'08"	1070.72	232.98	118.86	232.23	N 13°41'37"N
3	13°01'29"	1070.72	280.76	141.18	276.88	N 42°49'46"N
4	15°23'54"	1070.72	287.76	144.75	289.88	N 27°37'08"N
5	88°02'21"	257.74	287.07	167.51	280.80	S 11°22'13"N
6	42°23'24"	311.03	230.12	120.81	224.81	N 23°11'42"E
7	48°01'03"	357.74	289.81	159.34	281.11	N 20°22'52"E
8	21°11'32"	357.74	132.32	65.82	131.57	N 33°47'28"E
9	28°48'31"	357.74	167.49	85.31	185.87	N 09°47'08"E
10	24°09'58"	1070.72	451.81	229.21	448.27	N 03°13'51"E
11	12°21'40"	1070.72	231.00	115.85	230.55	N 02°40'19"N
12	11°48'18"	1070.72	230.81	110.70	229.22	N 08°24'44"E
13	34°41'14"	411.04	246.64	128.37	245.06	N 19°20'57"E
14	7°42'10"	411.04	55.26	27.87	55.22	N 40°32'19"E
15	18°01'17"	387.74	112.52	56.75	112.06	S 12°38'18"E



8310  
 RECORDED FILED HC  
 2-1-88  
 4100  
 ASB

DATE OF SURVEY Beginning 8-25-82 Ending 8-30-82	NAME OF SURVEYOR TOMER & WORLING Registered Engineers, Inc. Juneau, Alaska
STATE OF ALASKA DEPARTMENT OF NATURAL RESOURCES DIVISION OF TECHNICAL SERVICES ANCHORAGE, ALASKA	
ALASKA STATE LAND SURVEY 83-8 WRANGELL ISLAND EAST L.A.S.No. 03CB-84-3-2 A SUBDIVISION WITHIN UNSERVEYED SECTIONS 27, 28, 29, 30, 31, 32 & 33 OF T 63 S, R 84 E, C 8 N, ALASKA & UNSERVEYED SECTIONS 12, 13, 14, & 24, T 63 S, R 84 E, C 8 N, ALASKA	
DRAWN BY J. BUCK DATE 3-7-83 SCALE 1" = 200'	APPROVAL RECOMMENDED DATE 3-7-83 CHECKED FILE NO. 83-8

**BEARING TREES FOR PRIMARY MONUMENTS SET THIS SURVEY**

**BLOCK 1**

C1 L1	N 25°55' E - 23.8 N 48°48' W - 3.7 S 41°24' E - 25.5	10" CEDAR 24" CEDAR 16" HEMLOCK
WCMC2 L1	S 48°50' W - 20.8 S 43°47' E - 24.0 N 38°43' W - 14.2	10" HEMLOCK 30" HEMLOCK 40" HEMLOCK
WCMC3 L5 & WCMC2 L6	S 80°34' W - 15.8 N 57°03' W - 7.7 N 75°52' E - 12.8	14" HEMLOCK 7" HEMLOCK 8" HEMLOCK
C4 L5 & C1 L6	N 51°07' E - 11.7 S 1°15' E - 28.8 N 31°17' W - 7.1	14" HEMLOCK 20" HEMLOCK 10" HEMLOCK
C1 L8	N 4°58' E - 18.8 S 79°18' E - 5.5 S 12°43' W - 6.7	14" HEMLOCK 10" HEMLOCK 20" HEMLOCK
WCMC2 L8	S 25°32' W - 38.7 S 53°51' E - 7.7 N 14°21' W - 45.8	30" HEMLOCK 28" HEMLOCK 24" HEMLOCK
WCMC3 L9	S 51°28' E - 10.8 S 52°22' W - 7.2 N 50°30' W - 10.4	12" SPRUCE 14" SPRUCE 10" SPRUCE
C4 L8	N 18°18' E - 3.4 S 18°47' E - 20.8 S 86°53' W - 32.0	24" HEMLOCK 10" HEMLOCK 38" HEMLOCK

**BLOCK 2**

C1 L1	N 82°00' E - 24.8 S 24°00' W - 8.0 N 38°00' E - 12.8	38" HEMLOCK 20" HEMLOCK 5" HEMLOCK
WCMC2 L1	S 14°00' E - 5.9 S 47°30' W - 13.9 N 35°40' E - 16.4	8" HEMLOCK 9" HEMLOCK 24" HEMLOCK
WCMC3 L8 & WCMC2 L7	S 24°11' W - 17.5 S 37°38' E - 12.6 N 58°10' E - 4.3	15" HEMLOCK 9" HEMLOCK 15" HEMLOCK
C4 L6 & C1 L7	S 78°00' E - 1.3 S 53°00' W - 2.7 N 11°00' E - 7.8	8" HEMLOCK 12" HEMLOCK 9" HEMLOCK
WCMC3 L10 & WCMC2 L11	S 81°08' E - 6.1 N 37°14' E - 13.7 S 88°40' W - 9.8	10" HEMLOCK 9" SPRUCE 10" HEMLOCK
WCC4 L10 & WCC1 L11	N 18°48' E - 10.8 S 21°48' E - 4.8 N 83°07' W - 24.8	8" HEMLOCK 30" HEMLOCK 7" HEMLOCK
WCMC5 L18 & WCMC2 L17	N 21°00' W - 38.5 S 82°00' E - 9.8 S 20°00' E - 9.2	38" SPRUCE 18" HEMLOCK 12" HEMLOCK
CB L18 & C1 L17	N 87°38' E - 12.8 N 8°58' W - 18.5 S 88°18' E - 11.0	12" CEDAR 20" CEDAR 4" CEDAR
WCMC3 L20 & WCMC2 L21	S 59°06' W - 24.0 N 5°00' E - 13.2 N 84°38' E - 11.8	9" HEMLOCK 12" HEMLOCK 18" HEMLOCK
C4 L20 & C1 L21	S 78°32' E - 21.3 S 53°41' W - 45.8 N 48°11' W - 27.1	10" PINE 10" PINE 8" PINE
WCMC3 L25	S 84°08' W - 24.4 N 48°43' E - 5.7 S 7°45' E - 23.3	24" HEMLOCK 24" HEMLOCK 20" HEMLOCK
C4 L25	N 52°07' W - 7.1 N 79°58' E - 7.1 S 20°41' E - 8.4	12" HEMLOCK 14" HEMLOCK 8" HEMLOCK

**BLOCK 3**

C1 L1	S 21°44' E - 11.7 N 50°13' W - 35.8 N 87°45' E - 28.1	8" HEMLOCK 18" HEMLOCK 18" HEMLOCK
WCMC2 L1	S 22°41' E - 16.7 N 72°15' W - 6.6 N 15°49' E - 14.6	20" HEMLOCK 9" HEMLOCK 8" HEMLOCK
C3 L5 & C2 L6	N 33°27' W - 5.8 N 77°22' E - 21.9 S 8°19' W - 18.1	30" HEMLOCK 28" HEMLOCK 28" HEMLOCK
C4 L5 & C1 L6	S 21°55' W - 8.4 N 30°37' W - 98.8 N 54°34' E - 10.9	18" CEDAR 8" CEDAR 8" HEMLOCK
WCM3 L11	S 68°35' E - 18.4 N 43°00' W - 19.0 N 86°57' W - 4.0	18" HEMLOCK 20" HEMLOCK 18" HEMLOCK
C4 L11	S 12°18' W - 23.8 N 1°49' E - 30.8 N 87°21' E - 77.4	5" PINE 8" PINE 10" PINE

**BLOCK 4**

C3 L1	S 8°24' W - 13.3 N 88°52' W - 22.7 S 85°15' W - 8.6	9" CEDAR 10" CEDAR 9" HEMLOCK
C4 L2 & C3 L3	S 12°28' E - 19.3 N 47°32' W - 29.1 N 70°05' E - 38.2	9" PINE 5" PINE 5" PINE
C3 L5	S 17°28' W - 9.0 N 58°51' W - 9.7 N 28°54' E - 34.8	5" PINE 5" CEDAR 8" PINE
C2 L7 & C3 L8	S 15°13' E - 28.9 S 82°20' W - 20.8 N 82°39' E - 28.2	9" CEDAR 12" CEDAR 10" CEDAR
C2 L9	N 14°23' W - 5.1 S 75°00' E - 25.2 S 57°00' W - 25.9	18" HEMLOCK 8" HEMLOCK 18" ALDER

**BLOCK 5**

C2 L1	S 44°23' W - 11.1 N 50°34' W - 22.5 N 83°27' E - 19.5	8" HEMLOCK 18" CEDAR 12" HEMLOCK
WCMC3 L1	S 73°00' E - 7.0 S 35°00' W - 16.6 N 25°30' W - 10.9	15" HEMLOCK 15" SPRUCE 10" HEMLOCK
WCM3 L5	S 73°00' W - 23.0 N 38°30' W - 8.0 N 34°00' E - 11.5	27" SPRUCE 24" SPRUCE 8" HEMLOCK

**BLOCK 6**

C1 L1	N 1°00' W - 38.8 N 88°00' W - 88.9 S 23°00' E - 38.1	8" PINE 8" PINE 8" PINE
C2 L1	S 3°00' W - 23.1 S 75°00' E - 28.0 N 50°00' W - 4.7	15" HEMLOCK 12" HEMLOCK 15" HEMLOCK
WCMC3 L1	N 87°00' E - 80.8 S 11°00' W - 14.3 N 58°00' W - 5.2	30" SPRUCE 8" SPRUCE 12" HEMLOCK
WCMC3 L4 & WCMC2 L5	S 38°00' W - 3.7 N 38°00' W - 24.5 N 8°00' E - 15.5	24" HEMLOCK 9" HEMLOCK 12" SPRUCE
C4 L4 & C1 L5	S 32°00' E - 38.7 S 87°00' W - 28.4 N 25°00' W - 24.02	8" CEDAR 8" PINE 8" PINE

C4 L6 & C1 L7	S 80°00' W - 18.8 N 18°00' W - 3.7 S 28°00' E - 13.2	10" CEDAR 10" CEDAR 8" CEDAR
WCMC3 L8	S 36°00' W - 20.7 S 21°00' E - 4.1 N 84°00' E - 10.1	12" HEMLOCK 10" HEMLOCK 12" SPRUCE
C4 L8	S 84°00' W - 3.8 N 84°00' W - 18.8 S 77°00' E - 12.4	15" HEMLOCK 8" HEMLOCK 8" HEMLOCK

**BLOCK 7**

C1 L1	N 30°00' E - 20.3 S 48°00' E - 10.0 N 84°00' W - 8.7	30" HEMLOCK 21" HEMLOCK 15" HEMLOCK
WCMC2 L1	S 31°00' E - 15.5 N 43°00' W - 19.0 N 48°00' E - 20.0	24" SPRUCE 30" HEMLOCK 12" HEMLOCK
C4 L2 & C1 L3	N 85°30' E - 17.3 S 18°00' E - 13.7 N 44°00' W - 13.9	8" CEDAR 8" HEMLOCK 15" HEMLOCK
WCMC3 L5 & WCMC2 L6	S 7°00' W - 13.3 N 88°00' W - 27.4 N 31°30' W - 41.4	9" SPRUCE 12" SPRUCE 12" HEMLOCK
C4 L5 & C1 L6	N 67°00' E - 11.3 S 30°00' E - 12.2 S 84°00' W - 3.2	12" CEDAR 9" CEDAR 24" CEDAR
WCMC3 L8	N 34°00' W - 24.1 N 87°00' W - 20.5 S 15°00' E - 9.1	30" HEMLOCK 12" HEMLOCK 30" HEMLOCK
C4 L8	S 79°00' E - 8.8 S 29°00' W - 14.4 N 88°00' W - 21.0	18" HEMLOCK 15" HEMLOCK 27" CEDAR

**APPROVAL**

I hereby certify that the subdivision plat shown hereon has been found to comply with the subdivision regulations of the City of Wrangell, Alaska and that the said plat has been approved by the platting board by Plat Resolution No. 1993 dated Apr 19 1993 and the plat hereon has been approved for recording in the office of the District Recording Office, Ketchikan, Alaska.

Dated: June 24 1983

*W. H. Howell*  
Chairman  
City of Wrangell  
Platting Board

Attest:

*James C. Anderson*  
Clerk  
City of Wrangell  
Platting Board

**GENERAL NOTES**

1. This survey was executed under the terms of GSC-489.
2. Unless otherwise noted all bearings shown hereon are based on a local plane which is oriented to a true meridian only at the basis of bearings.
3. All distances shown hereon are in U.S. survey feet, adjusted to horizontal but not to sea level distances.
4. The titles; ALASKA DIVISION OF LANDS (ADL), DIVISION OF TECHNICAL SERVICES (DTS), and DEPARTMENT OF NATURAL RESOURCES (DNR), are synonymous.
5. Parcels within this subdivision may contain wetlands as defined within the purview of Section 404 of the Clean Water Act and may require Department of Army Corps of Engineers (DACE) permits prior to placement of fill material into these areas. Contact with DACE should be made prior to commencing construction.
6. Water supply and sewage disposal. No individual water supply system or sewage disposal system shall be permitted on any lot unless such system is located, constructed and equipped in accordance with the requirements of the Alaska Department of Environmental Conservation (ADEC). Approval of such systems shall be obtained from said authority.
7. This subdivision has been approved by the Alaska Department of Environmental Conservation pursuant to 18 AAC 72.085. On lot wastewater discharge is restricted to self contained privies or such systems as approved by the Department of Environmental Conservation.
8. The meanders shown hereon are for area computations only, and the true meanders of mean high water or ordinary high water form the boundaries of the lots.
9. Easements are located as shown on the plat. There shall be additional easements, as required, at each utility pole location for guys and anchors. The right shall be reserved for the involved utility companies to cut any trees within or without the easement, which reasonably present a danger to the utility.
10. Public access across state owned tracts may be obtained by application to the District Office of the Department of Natural Resources.

**CERTIFICATE OF OWNERSHIP AND DEDICATION**

I, the undersigned, hereby certify that I am the director, Division of Technical Services, and that the State of Alaska is the owner of A.S.L.S. 83-8, as shown hereon. I hereby approve this survey and plat for the State of Alaska, and dedicate for public or private use as noted, all easements, public utilities, and right-of-way as shown and described hereon.

DATE: July 11, 1983  
*James C. Anderson*  
DIRECTOR  
DIVISION OF TECHNICAL SERVICES

**NOTARY'S ACKNOWLEDGEMENT**

Notary for ALASKA  
Subscribed and Sworn Before Me this 11th day of JULY

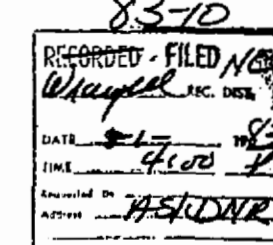


*Samuel Thomas*  
Notary Public for Alaska  
My commission expires 12-10-84

**SURVEYORS CERTIFICATE**

I hereby certify that I am properly registered and licensed to practice land surveying in the State of Alaska, and that this plat represents a survey made by me or under my direct supervision and the monuments shown hereon actually exist as described and that all dimensions and other details are correct.

Dated: June 27 1983



DATE OF SURVEY Beginning 8-25-82 Ending 8-30-83	NAME OF SURVEYOR TODD & HODDING Registered Engineers, Inc. Juneau, Alaska
STATE OF ALASKA DEPARTMENT OF NATURAL RESOURCES DIVISION OF TECHNICAL SERVICES ANCHORAGE, ALASKA	
ALASKA STATE LAND SURVEY 83-8 WRANGELL ISLAND EAST L.A.D.S.No. 0359-84-3-2 A SUBDIVISION WITHIN UNSURVEYED SECTIONS 27, 28, 34, 35, 7, 62 S, R 84 E, C.R.M. ALASKA & UNSURVEYED SECTIONS 12, 13, 14, 6 24, 7 23 S, R 84 E, C.R.M., ALASKA	
DRAWN BY J. BUCK DATE 3-7-83 SCALE NONE	APPROVAL/RECOMMENDED <i>James C. Anderson</i> District Surveyor DATE 7-11-83 CHECKED FILE NO. 83-8