



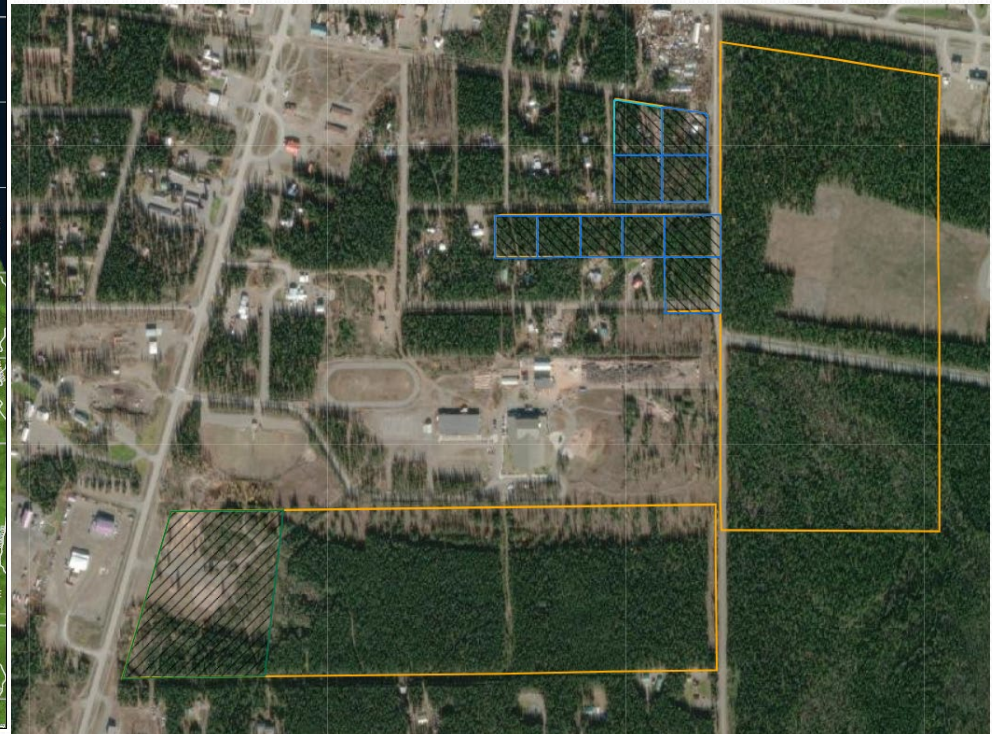
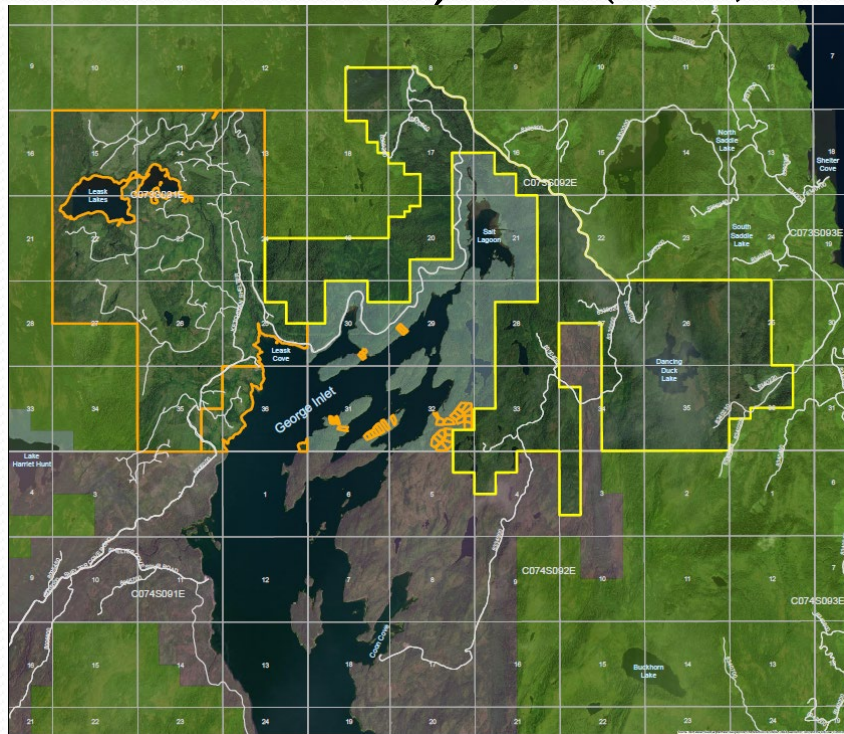
Trust  
Land Office

# **Resource Management Committee Executive Director Report**

Presented by: Jusdi Warner  
Date: July 28<sup>th</sup>, 2022

# Timber

- ❖ Shelter Cove Road
- ❖ New Forester
- ❖ Small Projects (Tok, Delta Junction, Subdivisions)





# Minerals & Energy

❖ Icy Cape

❖ Constantine

❖ AMA

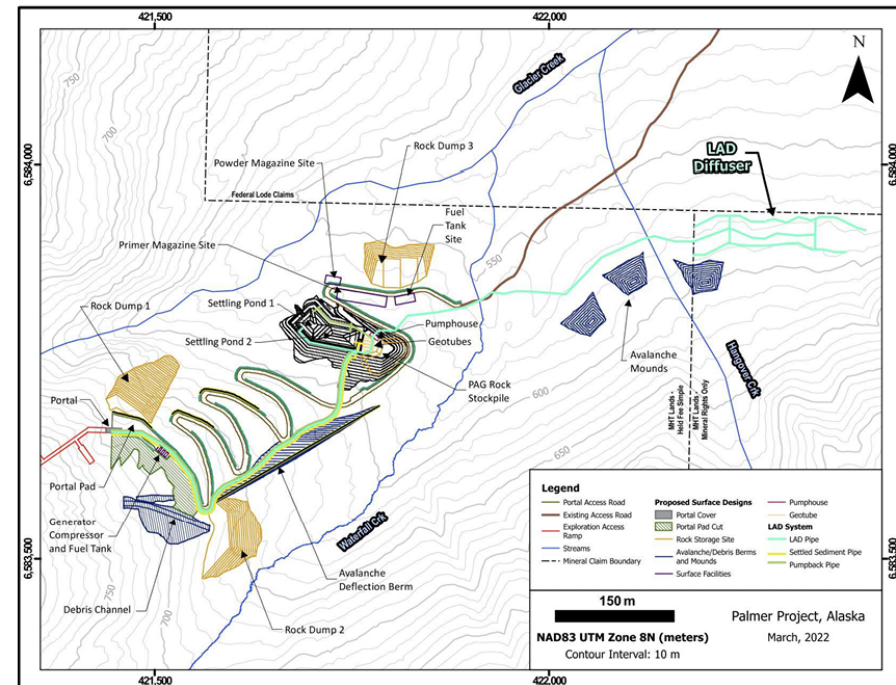
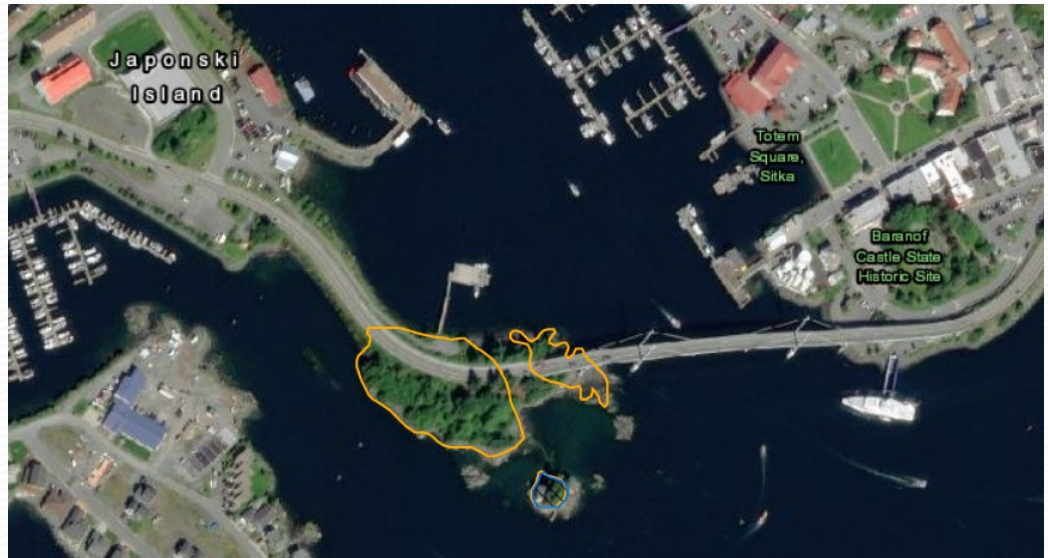
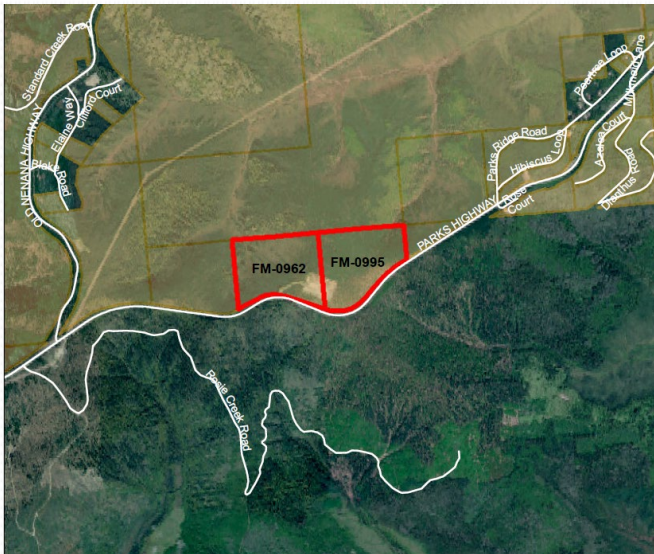


Figure 3. Site Drawing Showing Major Surface Components

# Lands

- ❖ DMVA Cemetery Site
- ❖ Land Sales
- ❖ Fall Competitive Land Sale Sept 7-Nov 14
- ❖ Wolf Creek Boat Works (Hollis)





# Commercial Real Estate

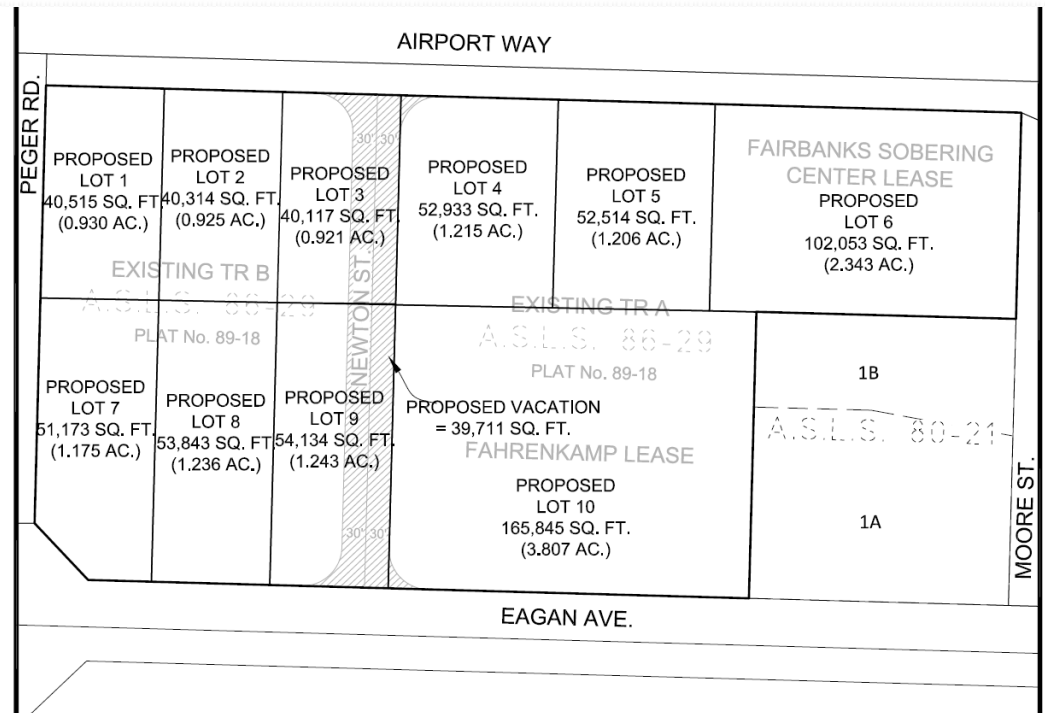
---

- ❖ Leasing
- ❖ Vacancy Outlook



# Program Related Real Estate

- ❖ Airport & Pegar Property - Fairbanks
- ❖ Community Park Loop - Anchorage





# Commercial Development

## ❖ Anchorage – UMED Area



# On the Radar

- ❖ New DNR Commissioner
- ❖ New Staff
- ❖ Section Line Easement Agreement

## Trust Land Office

