

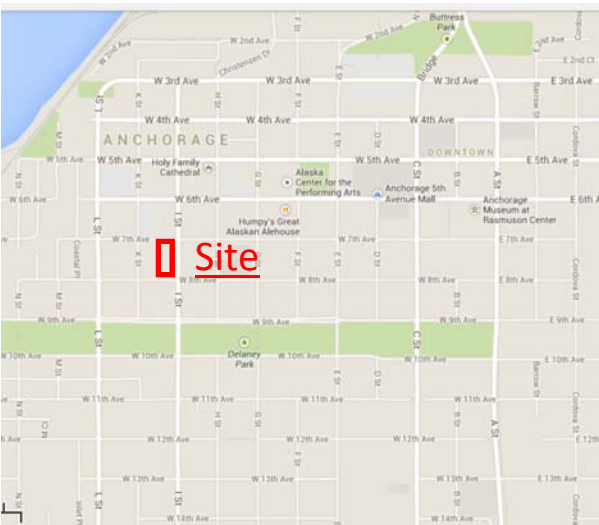
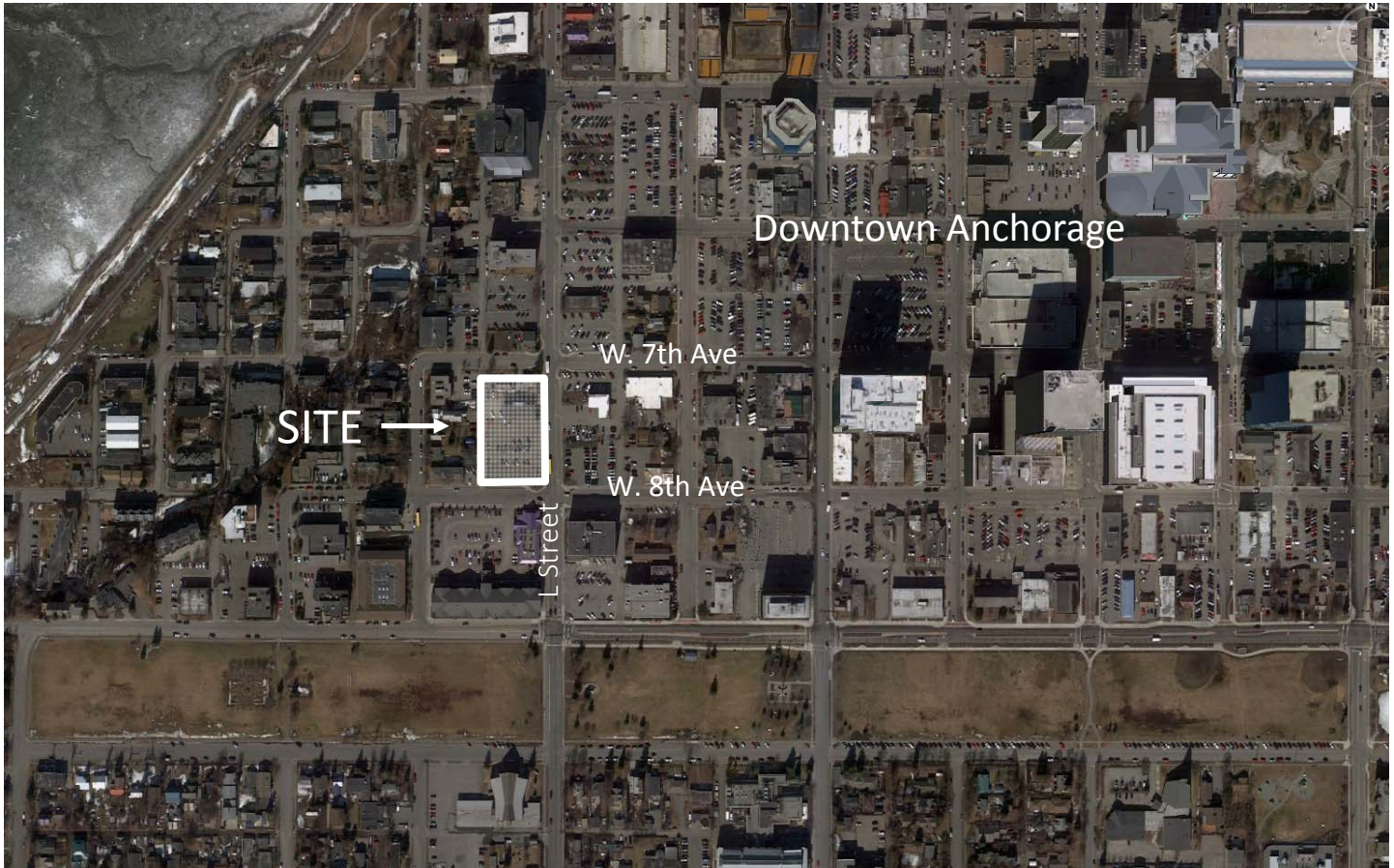
AVAILABLE FOR LEASE

Downtown Development Parcel

5 Contiguous Lots Forming the Southwest Corner of W. 7th Ave & L Street
Anchorage, AK



Trust
Land Office



- Preferred Transaction: Build to suit or ground lease based on appraised value
- Excellent proximity within Downtown Anchorage
- Frontage and high visibility on L Street, W. 7th Ave, & W. 8th Ave
- Approximately 43,832 square feet/1 acre
- Zoning: B-2C
- All utilities to the site

7/22/14

CONTACT: Jeff Green
(907) 269-8422
Email: jeffrey.green@alaska.gov

2600 Cordova Street, Suite 201
Anchorage, AK 99503
mhtrustland.org