




Trust

Land Office

BIG GAME GUIDE PERMIT
PROGRAM

ALASKA MENTAL HEALTH
TRUST AUTHORITY
RESOURCE MANAGEMENT
COMMITTEE
APRIL 22, 2020

MISSION

A photograph of three paw prints in sand, arranged vertically. The prints are dark and show distinct claw marks.

Management shall be conducted solely in the best interest of the Alaska mental health trust and its beneficiaries.

- Maximize revenues – land sales, permitting, leasing, easements, utilities, mining, timber, etc.
- Land stewardship efforts to protect inherent value for today and into perpetuity – clean and maintain, resolve trespass, monitor unauthorized use, compliance, etc.

UNAUTHORIZED BIG GAME GUIDING ON TRUST LAND

ICY BAY CLOSURE MHT 9100218

- 11 AAC 99.080 Closure of mental health trust land
- Icy Cape is closed for **public use** until the Executive Director issues a new decision to open
- Commercial activities authorized pertaining to timber sales and mineral development
- The airstrip is classified as private with the FAA and not available for general use.

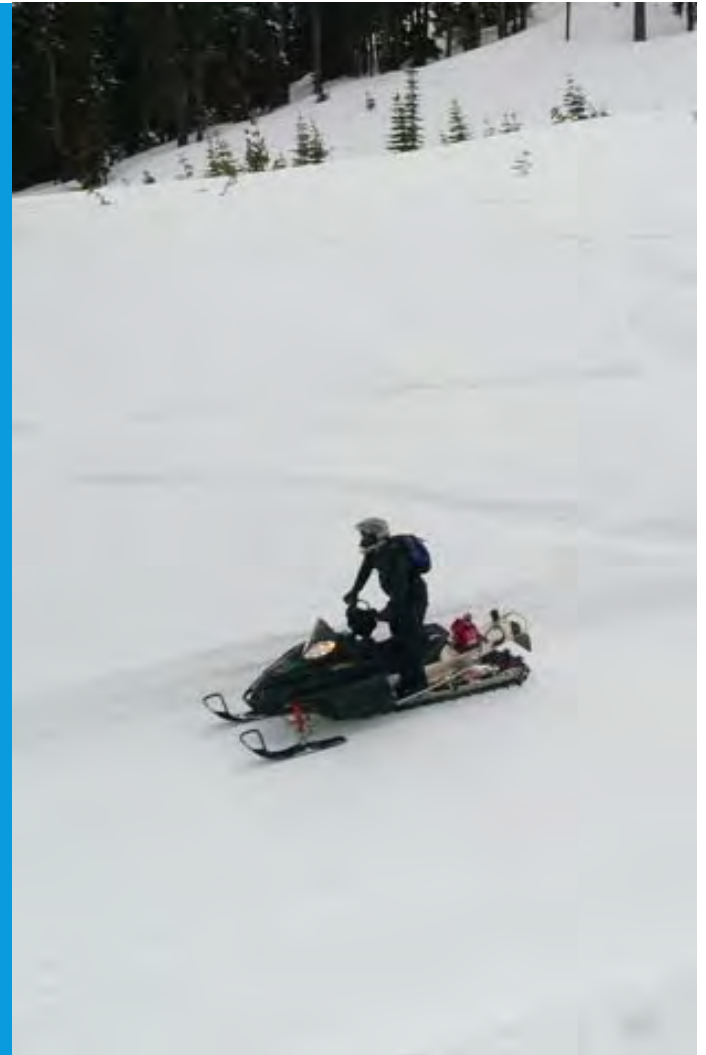


PUBLIC RECREATION ON TRUST LAND

The public use of Trust land for hunting, fishing, and other recreational activities is allowed under the following conditions. All activities must be:

- Day use only
- Noncommercial
- Nonmotorized
- In compliance with applicable state, federal, and local laws

Noncommercial motorized use, firewood cutting, and trapping access permits can be obtained via our **General Permit** at www.alaskamentalhealthtrust.org/landpermits/



Consultation:

Big Game
Commercial
Services Board

Division of
Mining, Land,
and Water

Department of
Fish & Game

DCCED -
Professional
Licensing

US Fish and
Wildlife Service



Outreach

438 letters to registered and master guides

BIG GAME GUIDE PERMIT PROGRAM

One exclusive permit per large land tract –
option to split Guide Use Areas

Application period

\$500 application fee

Commercial liability insurance and bonding
required

Competitive bid on fees

Five-year permit with a potential five-year
renewal

Permittee allowed motorized use, access, and
temporary camps

www.alaskamentalhealthtrust.org/trust-land-office/land-sales/biggameguidepermits/



BIG GAME GUIDE PERMIT PROGRAM



BIG GAME GUIDE PERMIT PROGRAM QUALIFICATIONS



- A master guide or have at least 8 years of experience as a registered guide
- Good standing with the Big Game Commercial Services Board
- Certified to guide in the subject Game Management Unit
- Good standing with the Trust Land Office

www.alaskamentalhealthtrust.org/trust-land-office/land-sales/biggameguidepermits/




Trust
Land Office

Alaska Mental Health Trust Land and Airstrip at Icy Bay - MHT 9100992

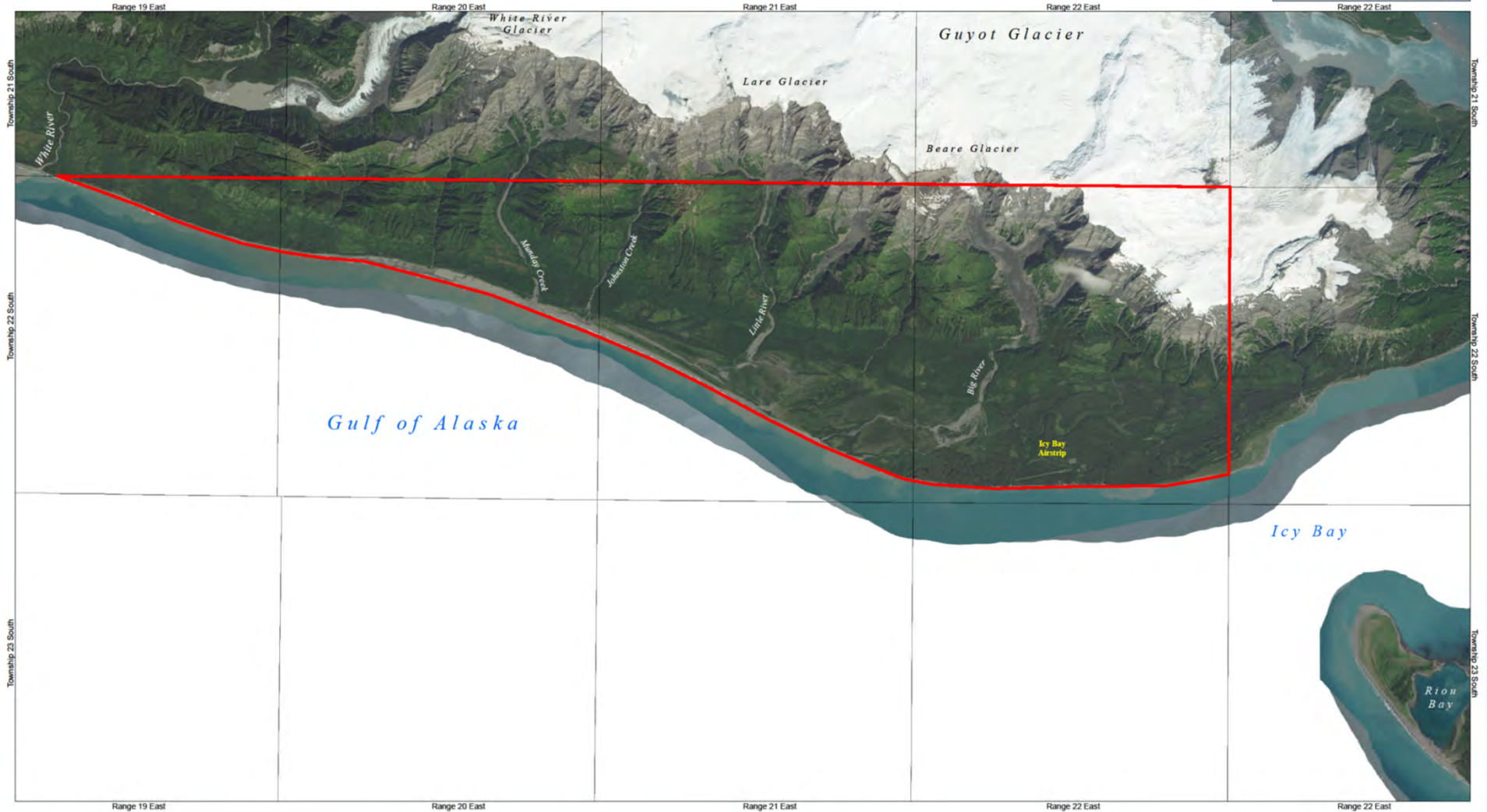
All land within Township 22 South, Ranges 19 - 22 East and 23 South, Ranges 21 - 22 East, Copper River Meridian.
Total Acreage: Approximately 50,000 acres. Game Management Unit 6A, Guide Use Area 6-01.

GIS Standard Map Disclaimer: This product is for informational purposes and may not have been prepared for, or be suitable for legal, engineering, or surveying purposes. Users of this information should review or consult the primary data and information sources to ascertain the usability of the information.

 Mental Health Parcel



0 0.5 1 2 3 4 5 6 Miles



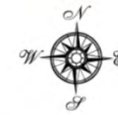
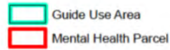


Trust
Land Office

Alaska Mental Health Trust Land at Kodiak - MHT 9200748

Located within Township 26 South, Range 24 West and Township 27 South, Range 21 West, Seward Meridian
Total Acreage: Approximately 3,400 acres. Game Management Unit 8, Guide Use Areas 8-26 and 8-27.

GIS Standard Map Disclaimer: This product is for informational purposes and may not have been prepared for, or be suitable for legal, engineering, or surveying purposes. Users of this information should review or consult the primary data and information sources to ascertain the usability of the information.



0 0.5 1 2 3 4 Miles





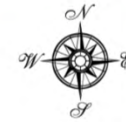
Trust
Land Office

Alaska Mental Health Trust Land at Tyonek - MHT 9200749

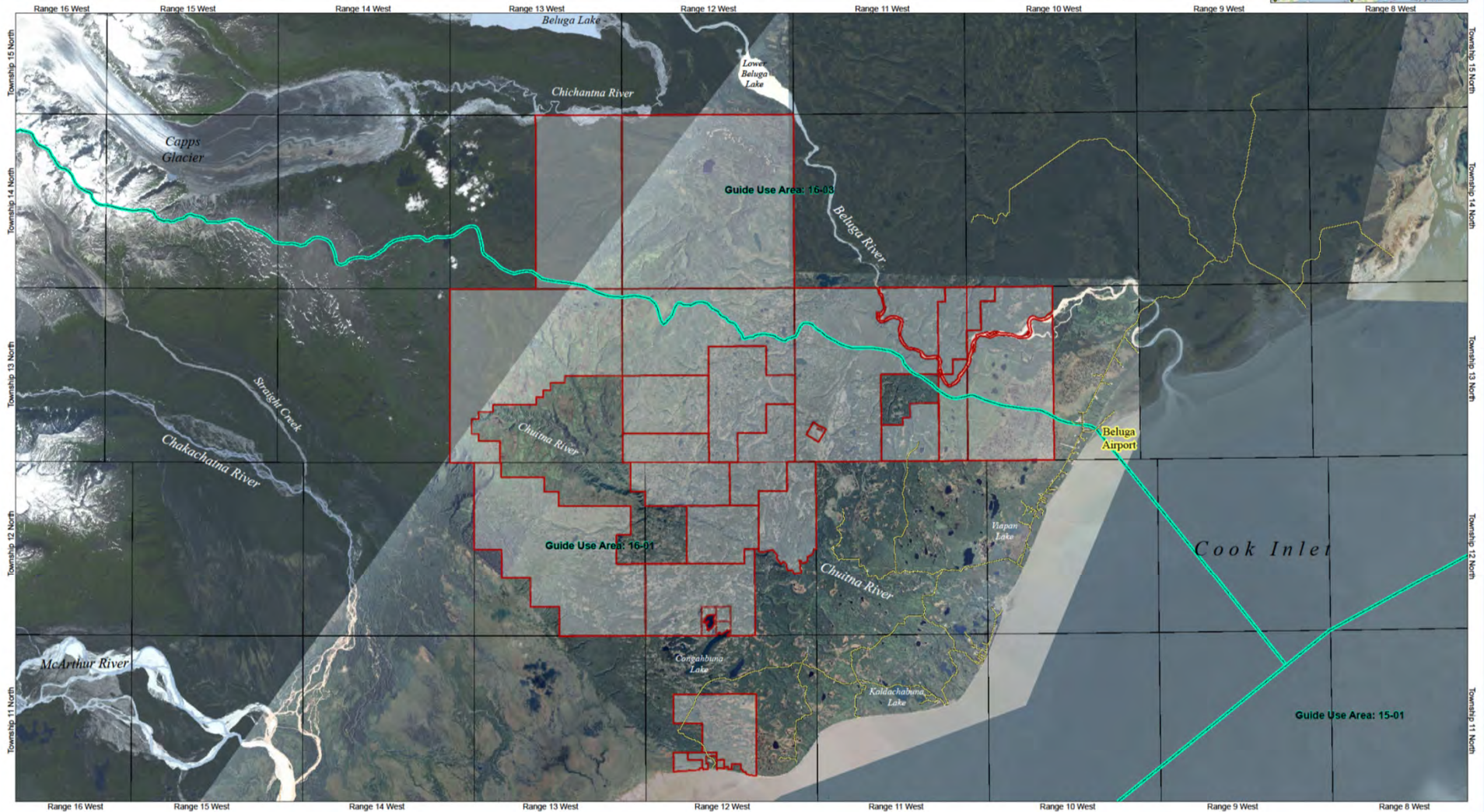
Trust Parcels located within Township 11 North, Range 12 West; Township 12 North, Ranges 12-13 West;
Township 13 North, Ranges 10-13 West; and Township 14 North, Ranges 12-13 West, Seward Meridian.
Total Acreage: Approximately 141,000 acres. Game Management Unit 16B, Guide Use Areas 16-01 and 16-03.

GIS Standard Map Disclaimer: This product is for informational purposes and may not have been prepared for, or be suitable for legal, engineering, or surveying purposes. Users of this information should review or consult the primary data and information sources to ascertain the usability of the information.

- Roads
- Guide Use Area
- Mental Health Parcel



0 0.5 1 2 3 4 5 6 Miles





Alaska Mental Health Trust Land at Healy - MHT 9400729

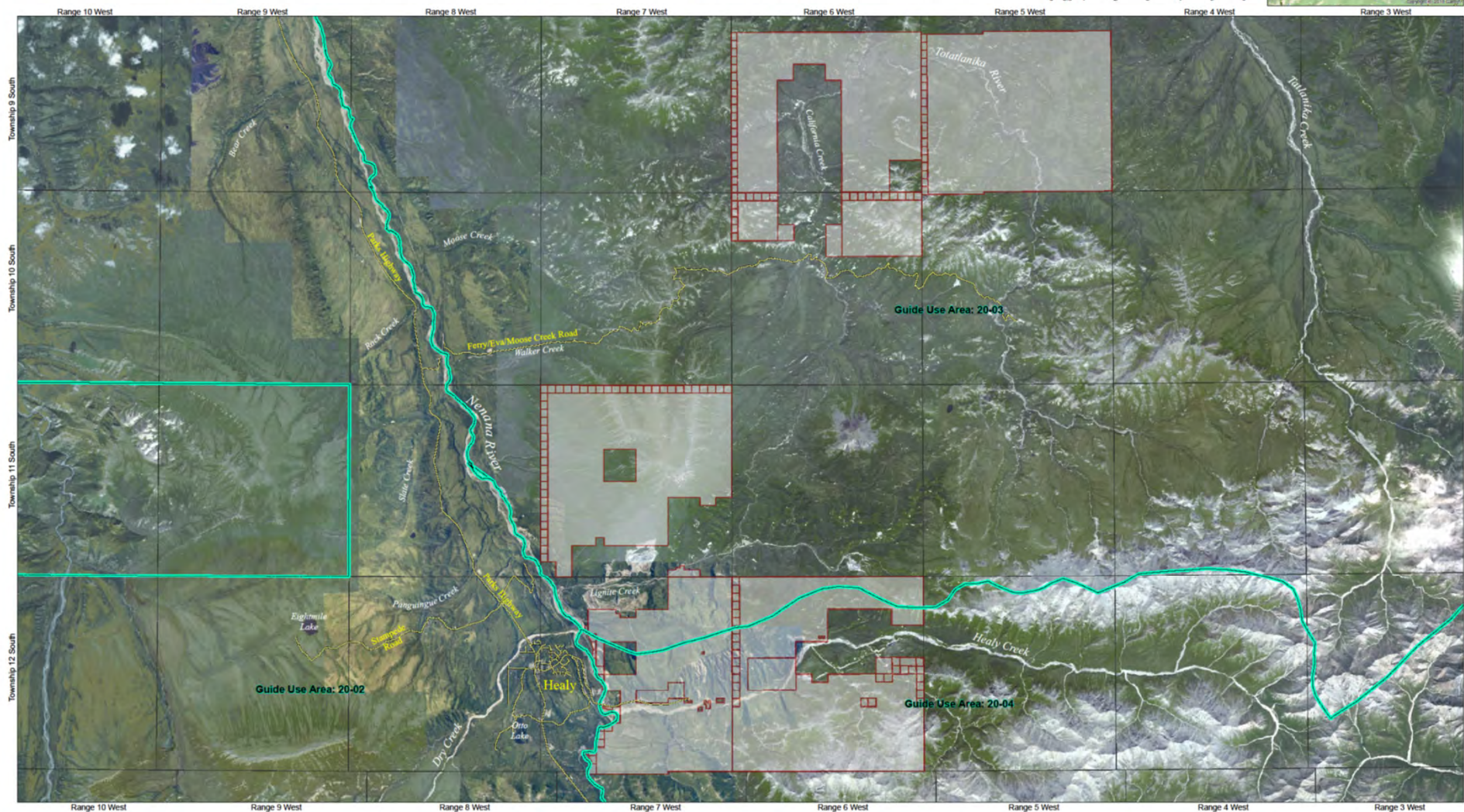
Trust parcels located within Township 9 South, Ranges 5 & 6 West; Townships 10 & 12 South, Range 6 West; and Township 11 & 12 South Range 7 West, Fairbanks Meridian. Approximately 88,000 acres.
Game Management Unit 20A, Guide Use Area 20-03 & 20-04.

GIS Standard Map Disclaimer: This product is for informational purposes and may not have been prepared for, or be suitable for legal, engineering, or surveying purposes. Users of this information should review or consult the primary data and information sources to ascertain the usability of the information.

- Roads
- Guide Use Area
- Mental Health Parcel



0 0.5 1 2 3 4 5 6 Miles



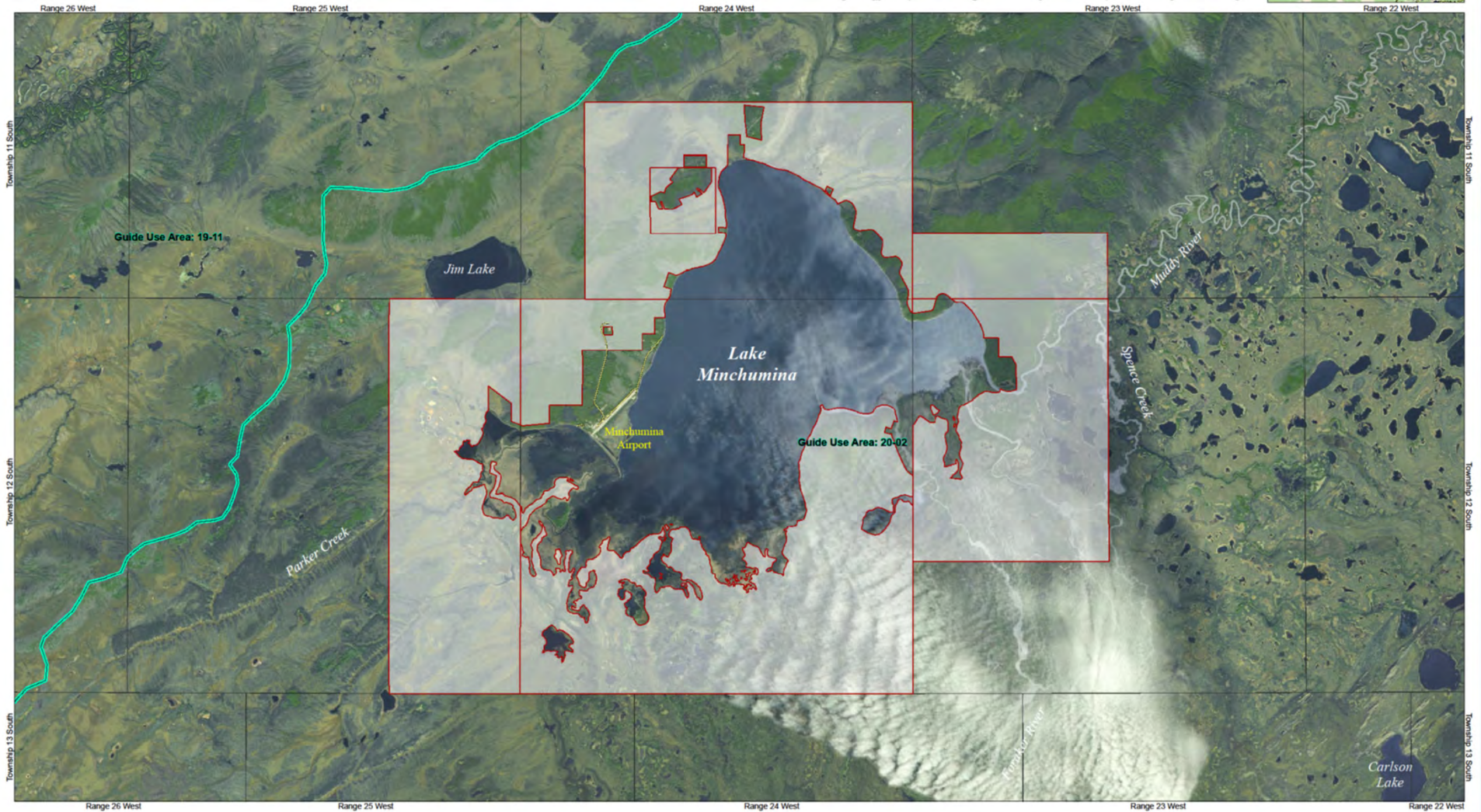
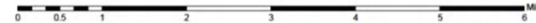
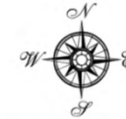


Alaska Mental Health Trust Land at Minchumina - MHT 9400730

Trust Parcels located within Township 11 South, Ranges 23 & 24 West and Township 12 South, Ranges 23-25 West, Fairbanks Meridian.
Total Acreage: Approximately 33,000 acres. Game Management Unit 20C, Guide Use Area 20-02.

GIS Standard Map Disclaimer: This product is for informational purposes and may not have been prepared for, or be suitable for legal, engineering, or surveying purposes. Users of this information should review or consult the primary data and information sources to ascertain the usability of the information.

- Roads
- Guide Use Area
- Mental Health Parcel

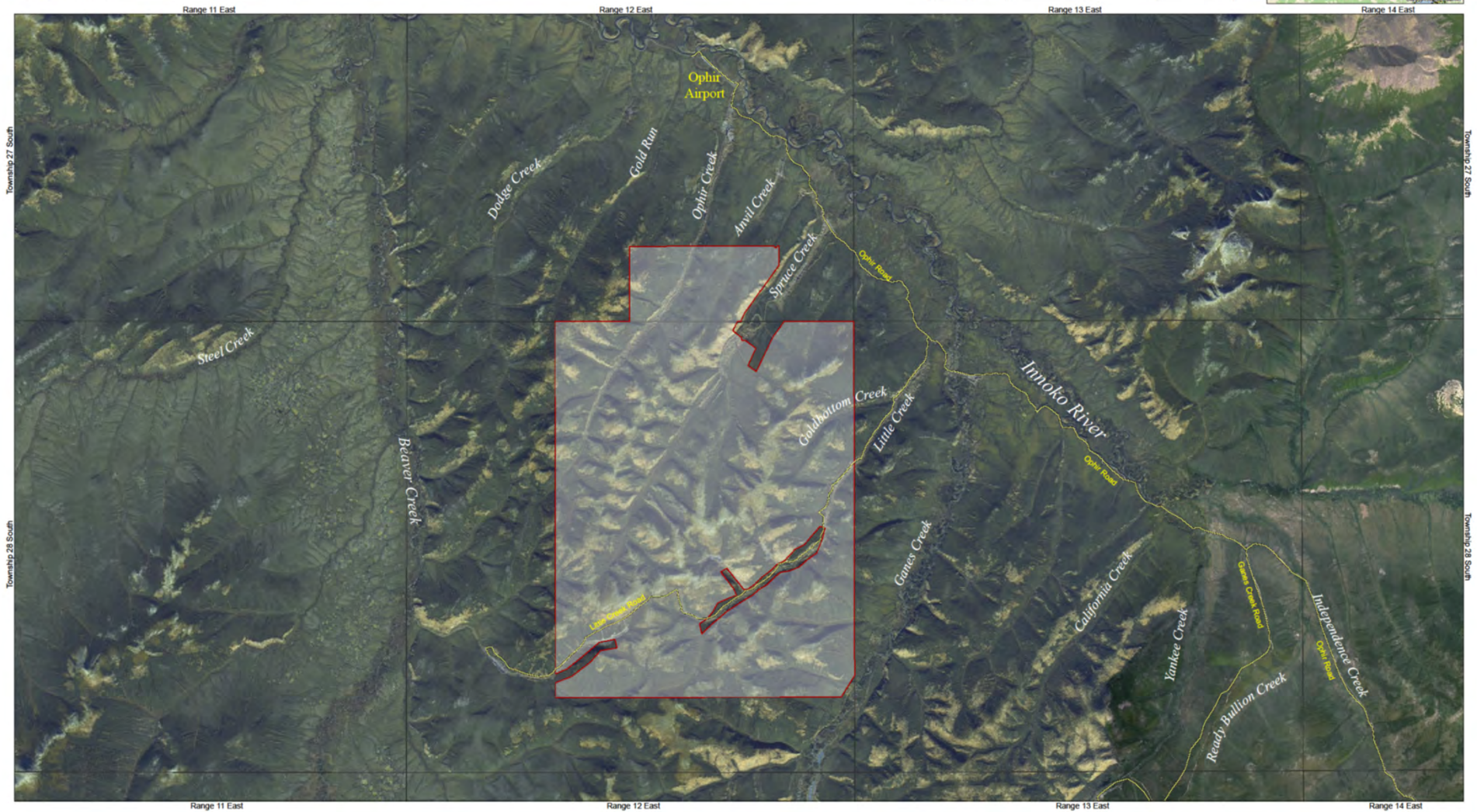




Alaska Mental Health Trust Land at Ophir - MHT 9400731

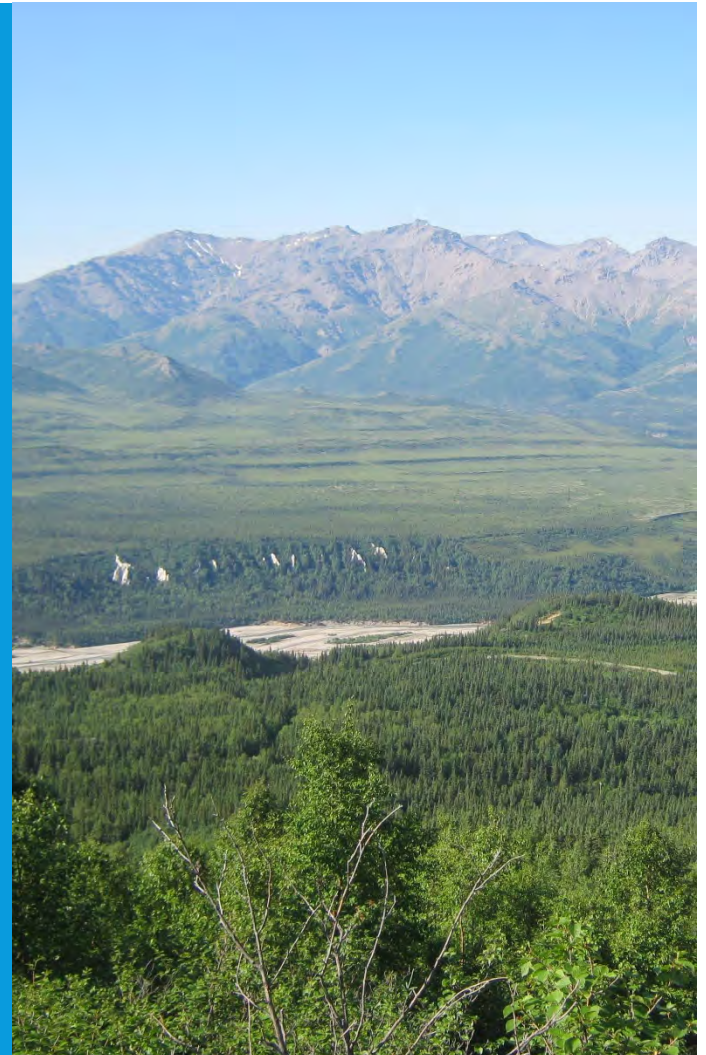
Trust parcels located within Townships 27 & 28, Range 12 East, Kateel River Meridian.
Total Acreage: Approximately 13,000 acres. Game Management Unit 21A, Guide Use Area 21-01.

GIS Standard Map Disclaimer: This product is for informational purposes and may not have been prepared for, or be suitable for legal, engineering, or surveying purposes. Users of this information should review or consult the primary data and information sources to ascertain the usability of the information.



MANAGEMENT PRINCIPLES

- 1) Maximization of long-term revenue from trust land;
 - Projected *annual* renewable revenue: \$75,000 - \$100,000+
- 2) Protection of the corpus;
 - Permits are revocable at will and not a disposal of interest
- 3) Protection and enhancement of the long-term productivity of trust land;
 - Mitigate unauthorized use of Trust lands
- 4) Encouragement of a diversity of revenue-producing uses of trust land; and
 - Build business on Trust lands while simultaneously remaining open for third party uses
- 5) Management of trust land prudently, efficiently, and with accountability to the trust and its beneficiaries.
 - Minimal TLO administration and low risk permit holders



THANK YOU!



Chandler Long

Trust Resource Manager

(907) 269-8421

chandler.long@alaska.gov