

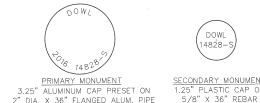
CERTIFICATE OF PAYMENT OF TAXES

STATE OF ALASKA
FIRST JUDICIAL DISTRICT
I, THE UNDERSIGNED, BEING DULY APPOINTED AND QUALIFIED ACTING FINANCE DIRECTOR FOR THE PETERSBURG BOROUGH, DO HEREBY CERTIFY THAT, ACCORDING TO THE RECORDS OF THE PETERSBURG BOROUGH, THE FOLLOWING DESCRIBED PROPERTY IS CARRIED ON THE TAX RECORDS IN THE NAME OF Alaska Mental Health Trust...

GENERAL NOTES

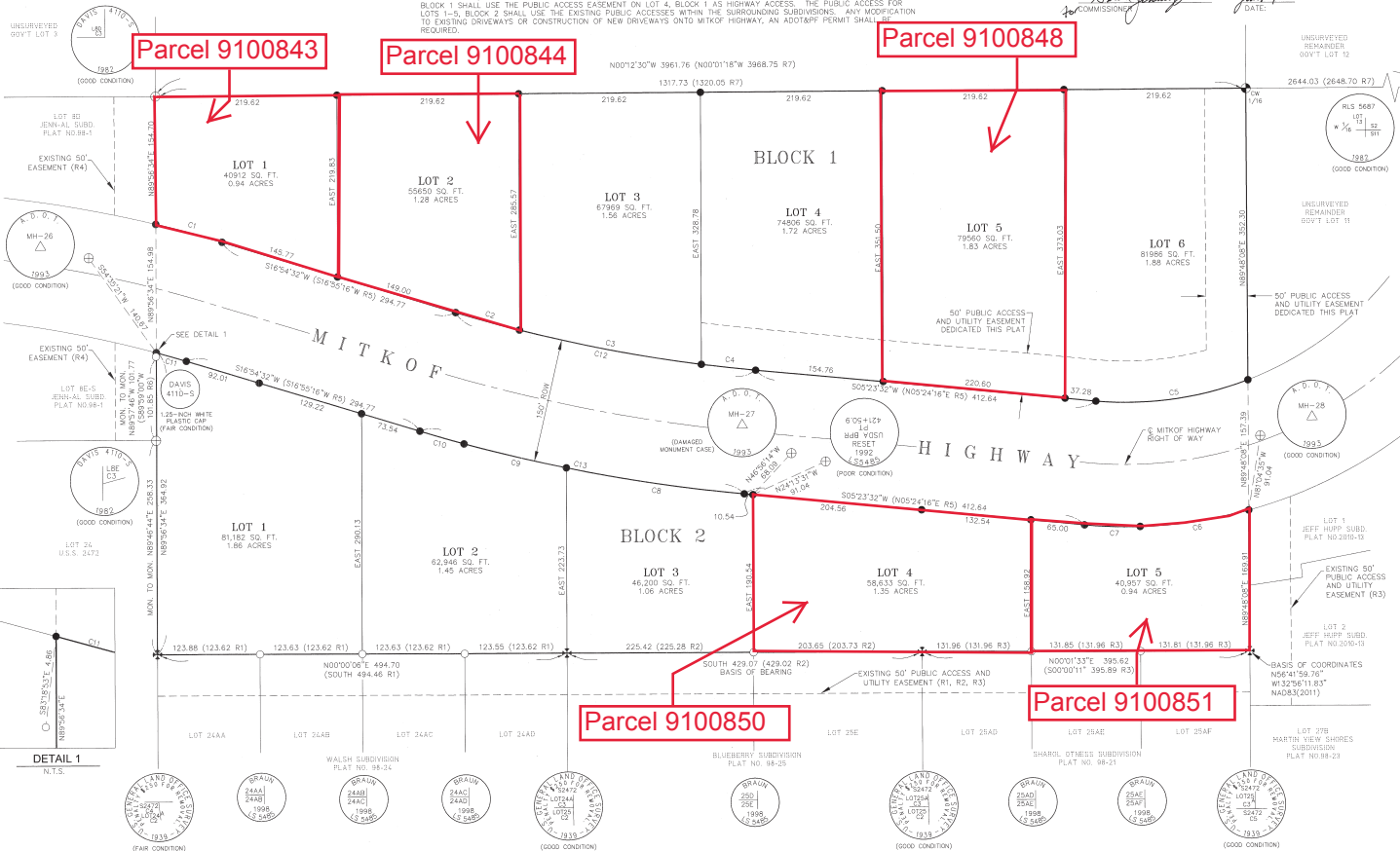
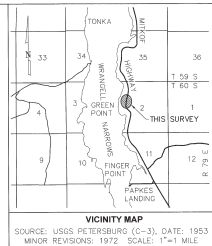
- 1. ALL BEARINGS SHOWN ARE TRUE BEARINGS AS ORIENTED TO THE BASIS OF BEARINGS. DISTANCES SHOWN ARE REDUCED TO HORIZONTAL FIELD DISTANCES AND ARE SHOWN IN US SURVEY FEET.
2. THE ERROR OF CLOSURE IS NOT GREATER THAN 1:5000
3. THE BASIS OF BEARING ON THIS PLAT WAS DETERMINED BY A HIGH PRECISION GPS SURVEY, USING TRIMBLE R7 AND R8 RECEIVERS, DIFFERENTIALLY CORRECTED AND PROCESSED WITH TRIMBLE BUSINESS CENTER, VER. 3.50 SOFTWARE.

TYPICAL SET MONUMENT DETAILS



PLAT APPROVAL

THIS PLAT IS APPROVED BY THE COMMISSIONER OF THE DEPARTMENT OF NATURAL RESOURCES OR THE COMMISSIONER'S DESIGNEE, IN ACCORDANCE WITH A.S. 45.15.



- LEGEND
BLM/GLO MONUMENT RECOVERED THIS SURVEY 2.5" BRASS CAP ON 1" DIA IRON PIPE
PRIMARY MONUMENT SET THIS SURVEY 3.25" ALUMINUM CAP PRESET ON 2" DIA X 36" FLANGED ALUMINUM PIPE
PRIMARY MONUMENT RECOVERED THIS SURVEY 3.25" ALUMINUM CAP ON 2" DIA ALUMINUM PIPE

SURVEYOR'S CERTIFICATE

I HEREBY CERTIFY THAT I AM PROPERLY REGISTERED AND LICENSED TO PRACTICE LAND SURVEYING IN THE STATE OF ALASKA, THAT THIS PLAT REPRESENTS A SURVEY MADE BY ME OR UNDER MY DIRECT SUPERVISION, THAT THE MONUMENTS SHOWN HEREON ACTUALLY EXIST AS DESCRIBED, AND THAT ALL DIMENSIONS AND OTHER DETAILS ARE CORRECT.

DATE 11/1/16 REGISTRATION NUMBER 14282-S
HANS E. PEDERSEN REGISTERED LAND SURVEYOR



CERTIFICATE OF OWNERSHIP AND DEDICATION

I, THE UNDERSIGNED, CERTIFY THAT THE ALASKA MENTAL HEALTH TRUST AUTHORITY IS THE OWNER OF MALLARD EAST & WEST SUBDIVISION, AS SHOWN ON THIS PLAT, ON BEHALF OF THE ALASKA MENTAL HEALTH TRUST AUTHORITY, I APPROVE THIS SURVEY AND PLAT AND DEDICATE OR RESERVE FOR PUBLIC OR PRIVATE USE, AS NOTED, ALL EASEMENTS, PUBLIC UTILITY AREAS, AND RIGHTS-OF-WAY AS SHOWN AND DESCRIBED ON THIS PLAT.

John Pedersen, Executive Director, Alaska Mental Health Trust Land Office, 2600 CORDOVA STREET, SUITE 100, ANCHORAGE, AK 99503. DATE: 12-16-14

NOTARY'S ACKNOWLEDGEMENT

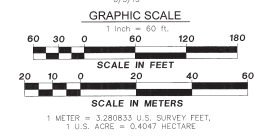
SUBSCRIBED AND SHOWN TO BEFORE ME THIS 11th DAY OF Dec. 2016, appearing before me, Notary Public, State of Alaska, My Commission Expires Web Office.

ACCEPTANCE OF DEDICATION

THE MAJOR HEREBY ACCEPTS FOR PUBLIC USES AND FOR PUBLIC PURPOSES THE REAL PROPERTY DEDICATED TO THE PUBLIC BY THIS PLAT INCLUDING EASEMENTS, RIGHTS-OF-WAY, ALLEYS, AND ROADWAYS SHOWN ON THIS PLAT. THE ACCEPTANCE OF LANDS FOR PUBLIC USE OR PUBLIC PURPOSE DOES NOT OBLIGATE THE PUBLIC OR ANY GOVERNING BODY TO CONSTRUCT, OPERATE OR MAINTAIN IMPROVEMENTS.

Signature of Mayor, Date: 11/21/16

Table with columns: CURVE No., RADIUS, DELTA, LENGTH, CHORD BEARING & DISTANCE. Contains 13 rows of curve data.



TRUST LAND SURVEY 2015-03. Includes date of survey, surveyor name (DOWL), project name (ALASKA MENTAL HEALTH TRUST AUTHORITY), and plat details (A PLAT OF MALLARD EAST & WEST SUBDIVISION).