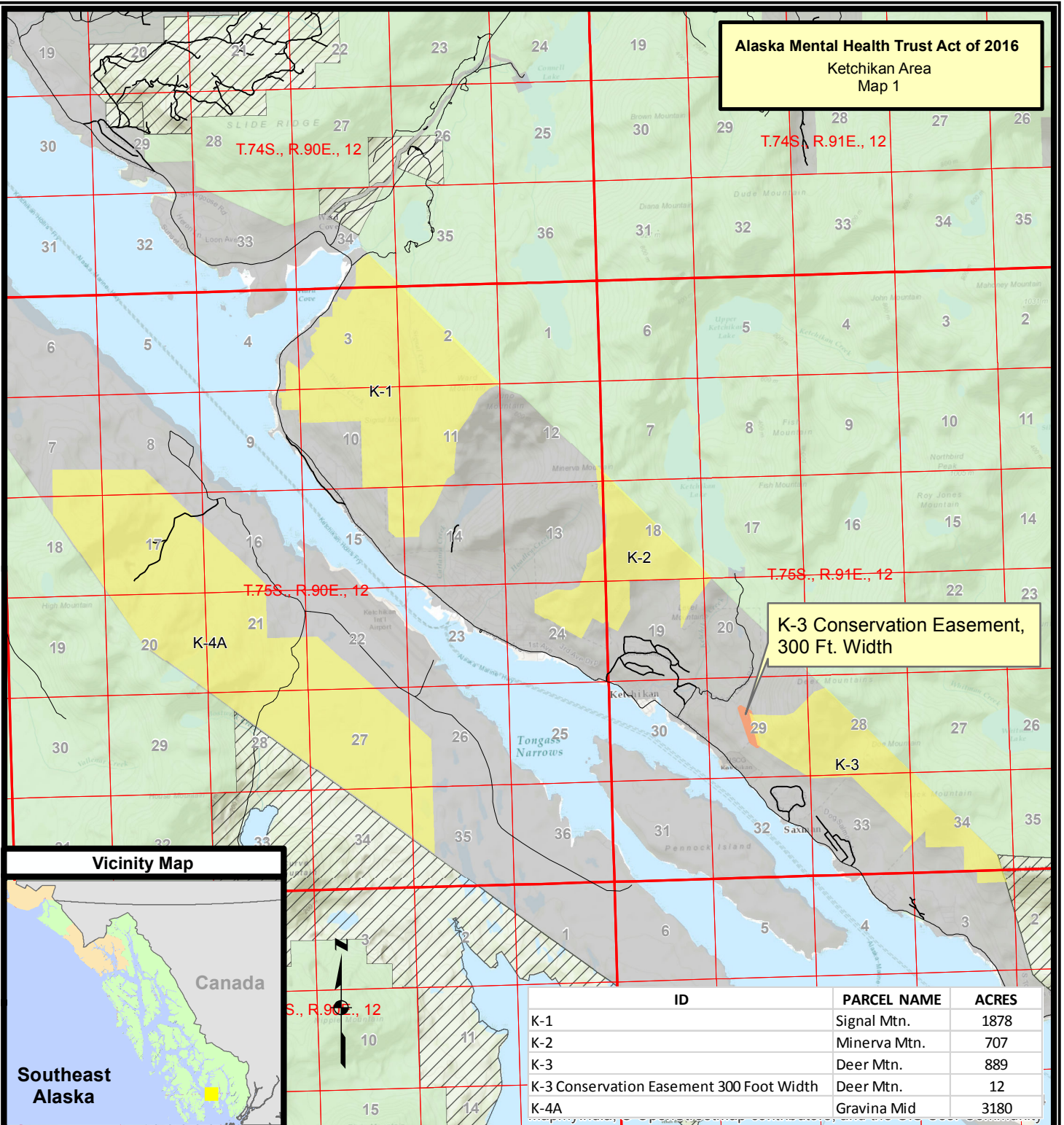


Alaska Mental Health Trust Act of 2016 Ketchikan Area Map 1



Vicinity Map



**Southeast
Alaska**

ID	PARCEL NAME	ACRES
K-1	Signal Mtn.	1878
K-2	Minerva Mtn.	707
K-3	Deer Mtn.	889
K-3 Conservation Easement 300 Foot Width	Deer Mtn.	12
K-4A	Gravina Mid	3180

References

Data acquired from a variety of sources of differing accuracy, precision and reliability. Features represented by the data may not represent accurate geographic locations.

Disclaimer

The USDA Forest Service makes no warranty, expressed or implied regarding the data displayed on this map, and reserves the right to correct, update, modify, or replace this information without notification.

Alaska Mental Health Trust Authority To Be Exchanged

Conservation Easements

Surface Ownership

State of Alaska

National Forest System Lands

Non - National Forest System Lands

0 0.5 1 2
Miles

Map Creation Date - 09-19-2016
Map Revision Date - 09-19-2016 \ Version 1

Sheet 1 of 9

Alaska Mental Health Trust Act of 2016

Legislative Map Senate Bill No.:

Ketchikan Area
6666 Approximate Acres



U.S. Forest Service - Alaska Region
Tongass National Forest
Alaska At-Large U.S. Congressional District



Copies of this map are available for public inspection
in the Office of the Regional Forester, R10, Juneau, Alaska.

Alaska Mental Health Trust Act of 2016
Petersburg Area
Map 2

**FS Proposed
Admin Site
Designation**

Vicinity Map



**Southeast
Alaska**

ID	PARCEL NAME	ACRES
P-1A	Twin Creek	3132
P-1A	FS Proposed Admin Site Designation	42
P-1B	Twin Creek	144
P-2B	S Fall Creek	181
P-3B	Blind Pt. E	92
P-4	Kupreanof N	280

References

Data acquired from a variety of sources of differing accuracy, precision and reliability. Features represented by the data may not represent accurate geographic locations.

Disclaimer

The USDA Forest Service makes no warranty, expressed or implied regarding the data displayed on this map, and reserves the right to correct, update, modify, or replace this information without notification.

- Surface Ownership**
- FS Proposed Admin Site Designation
 - Alaska Mental Health Trust Authority To Be Exchanged
 - State of Alaska
 - National Forest System Lands
 - Non - National Forest System Lands

0 0.5 1 2
Miles

Map Creation Date - 09-19-2016
Map Revision Date - 09-19-2016 \ Version 1

Sheet 2 of 9

Alaska Mental Health Trust Act of 2016

Legislative Map Senate Bill No.:

Petersburg Area
3871 Approximate Acres

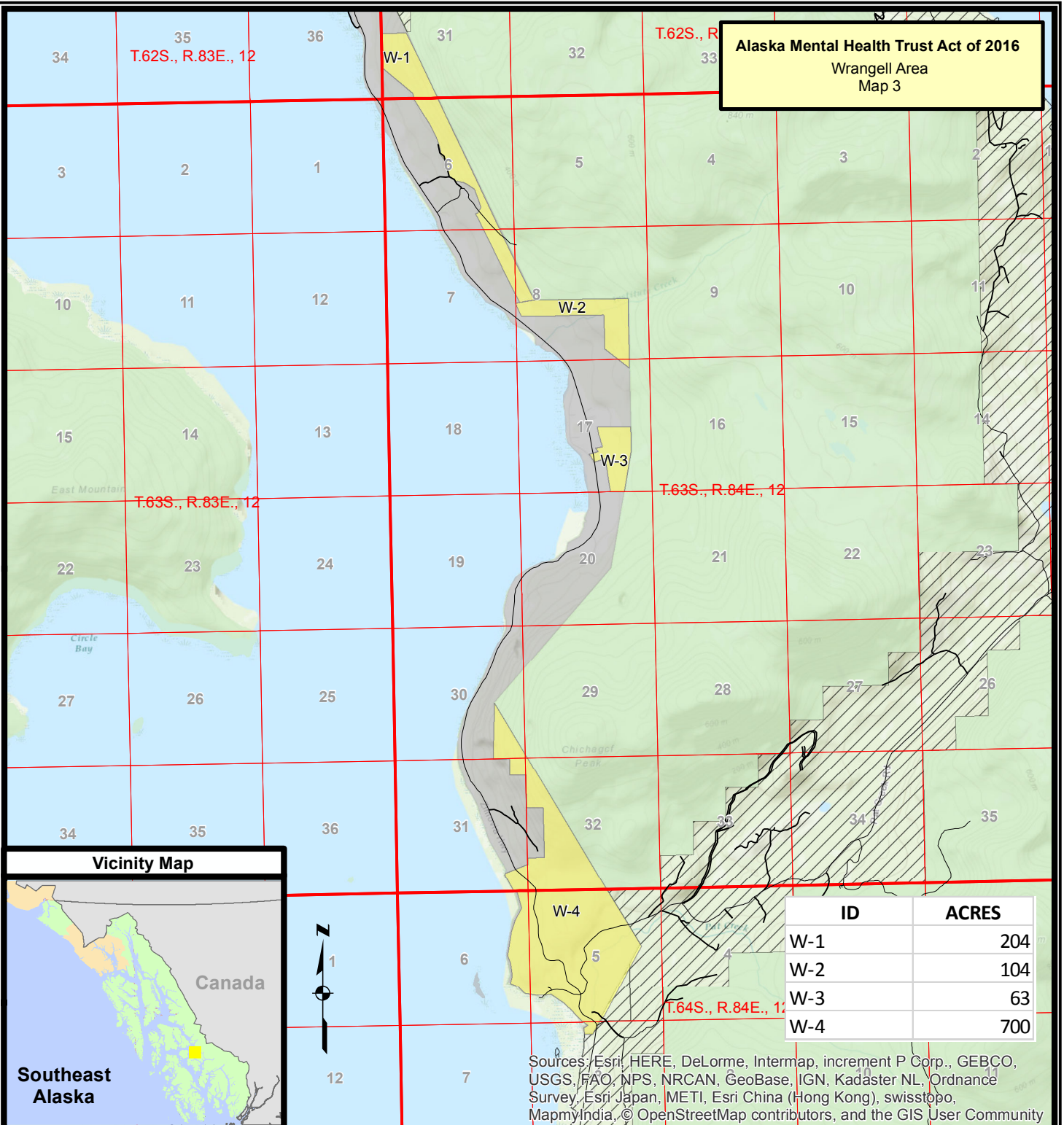


U.S. Forest Service - Alaska Region
Tongass National Forest
Alaska At-Large U.S. Congressional District



Copies of this map are available for public inspection
in the Office of the Regional Forester, R10, Juneau, Alaska.

Alaska Mental Health Trust Act of 2016 Wrangell Area Map 3



Vicinity Map



ID	ACRES
W-1	204
W-2	104
W-3	63
W-4	700

Sources: Esri, HERE, DeLorme, Intermap, increment P Corp., GEBCO, USGS, FAO, NPS, NRCAN, GeoBase, IGN, Kadaster NL, Ordnance Survey, Esri Japan, METI, Esri China (Hong Kong), swisstopo, MapmyIndia, © OpenStreetMap contributors, and the GIS User Community

References

Data acquired from a variety of sources of differing accuracy, precision and reliability. Features represented by the data may not represent accurate geographic locations.

Disclaimer

The USDA Forest Service makes no warranty, expressed or implied regarding the data displayed on this map, and reserves the right to correct, update, modify, or replace this information without notification.

Alaska Mental Health Trust Authority To Be Exchanged

Surface Ownership

- State of Alaska
- National Forest System Lands
- Non - National Forest System Lands

0 0.475 0.95 1.9 Miles

Map Creation Date - 09-19-2016
Map Revision Date - 09-19-2016 \ Version 1

Sheet 3 of 9

Alaska Mental Health Trust Act of 2016

Legislative Map Senate Bill No.:

Wrangell Area
1071 Approximate Acres



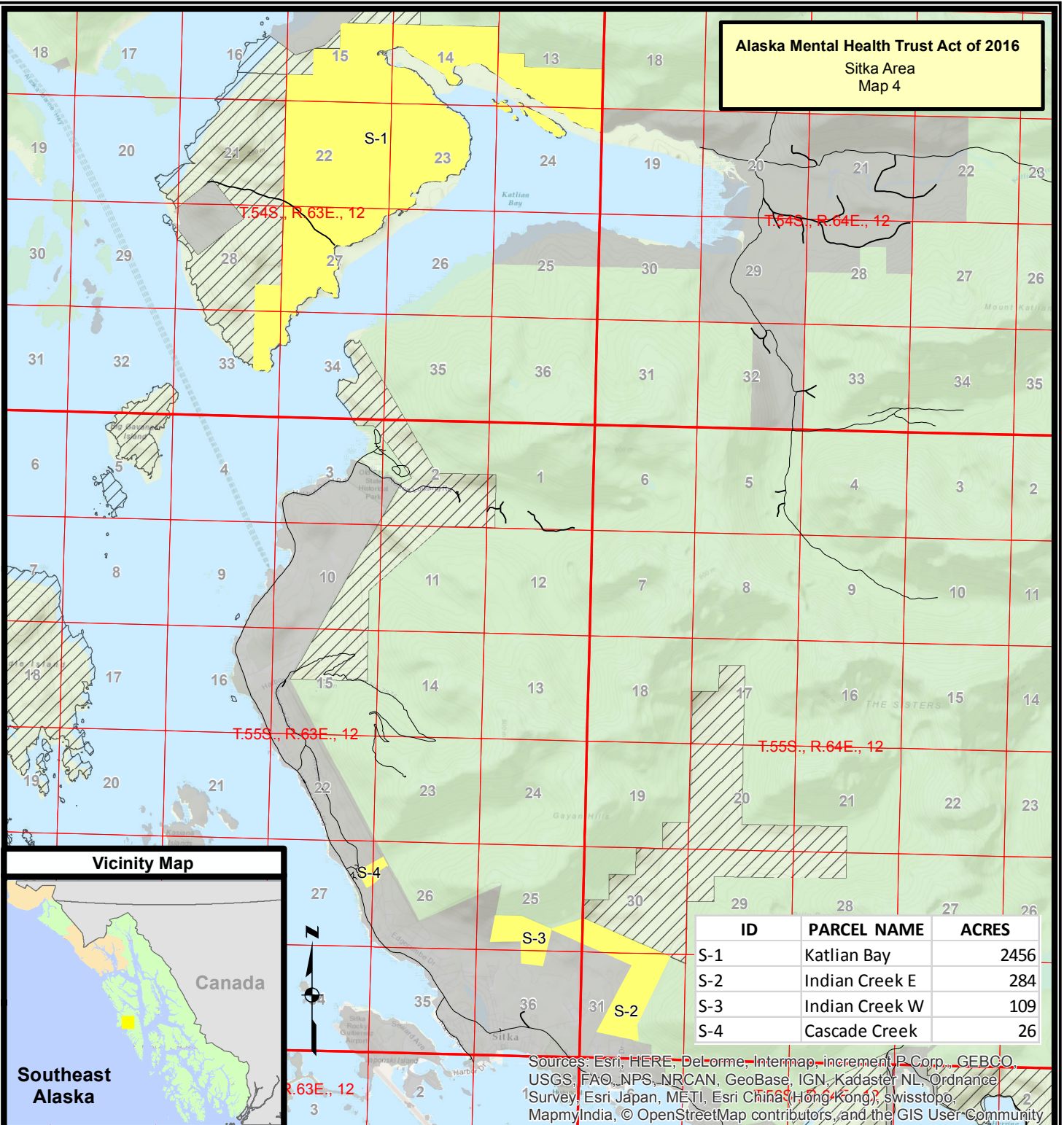
U.S. Forest Service - Alaska Region
Tongass National Forest
Alaska At-Large U.S. Congressional District



Copies of this map are available for public inspection in the Office of the Regional Forester, R10, Juneau, Alaska.

Alaska Mental Health Trust Act of 2016

Sitka Area
Map 4



ID	PARCEL NAME	ACRES
S-1	Katlian Bay	2456
S-2	Indian Creek E	284
S-3	Indian Creek W	109
S-4	Cascade Creek	26

Sources: Esri, HERE, DeLorme, Intermap, increment P Corp., GEBCO, USGS, FAO, NPS, NRCAN, GeoBase, IGN, Kadaster NL, Ordnance Survey, Esri Japan, METI, Esri China (Hong Kong), swisstopo, MapmyIndia, © OpenStreetMap contributors, and the GIS User Community

References

Data acquired from a variety of sources of differing accuracy, precision and reliability. Features represented by the data may not represent accurate geographic locations.

Disclaimer

The USDA Forest Service makes no warranty, expressed or implied regarding the data displayed on this map, and reserves the right to correct, update, modify, or replace this information without notification.

0 0.5 1 2
Miles

Map Creation Date - 09-19-2016
Map Revision Date - 09-19-2016 \ Version 1

Alaska Mental Health Trust Authority To Be Exchanged

Surface Ownership

- State of Alaska
- National Forest System Lands
- Non - National Forest System Lands

Sheet 4 of 9

Alaska Mental Health Trust Act of 2016

Legislative Map Senate Bill No.:

Sitka Area
2875 Approximate Acres

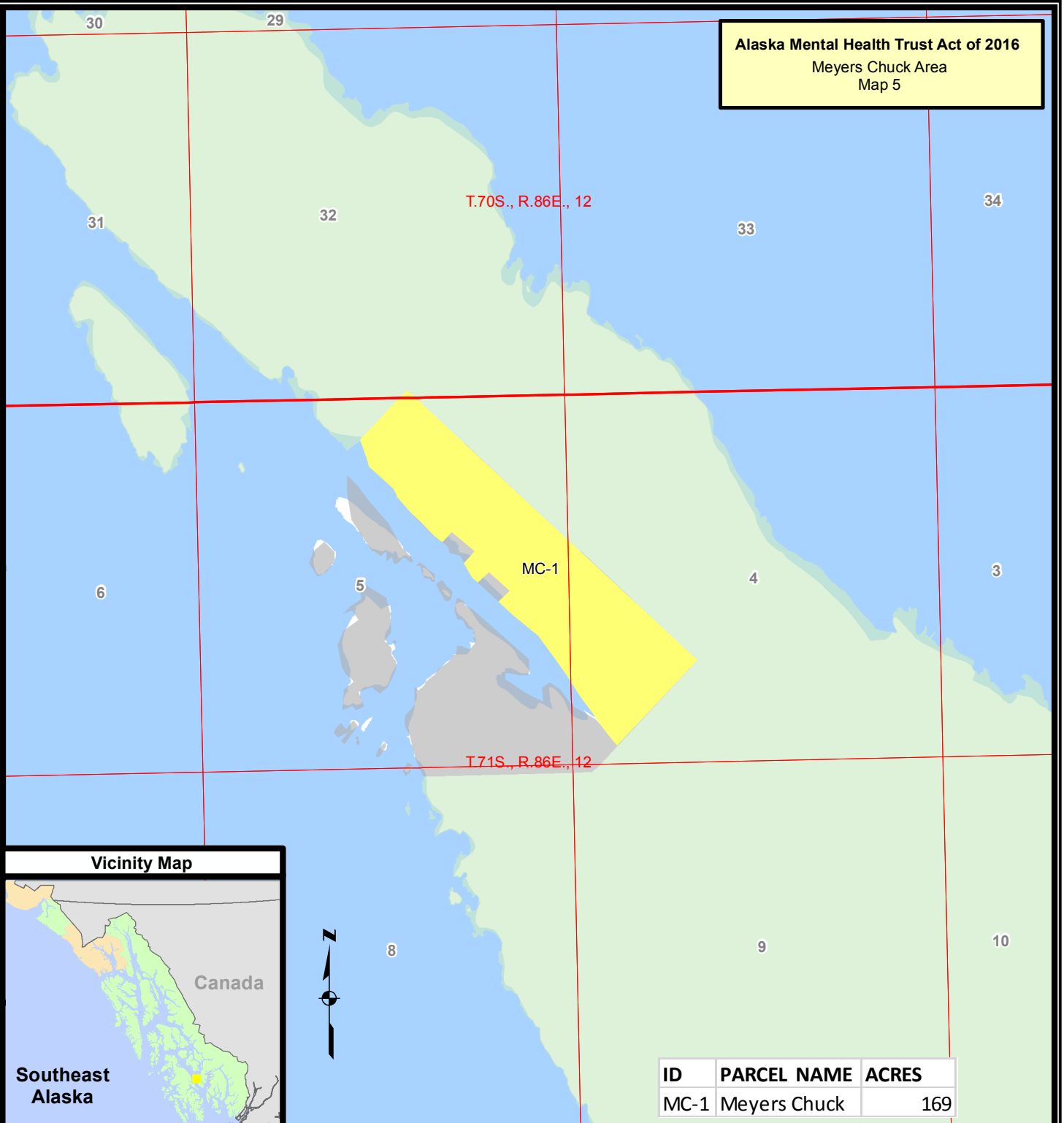


U.S. Forest Service - Alaska Region
Tongass National Forest
Alaska At-Large U.S. Congressional District

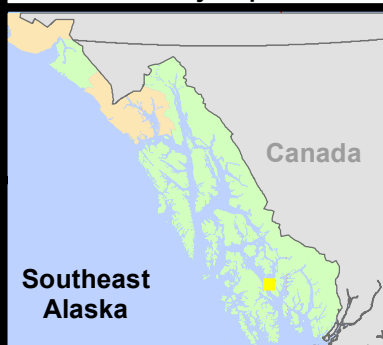


Copies of this map are available for public inspection
in the Office of the Regional Forester, R10, Juneau, Alaska.

Alaska Mental Health Trust Act of 2016
Meyers Chuck Area
Map 5



Vicinity Map



ID	PARCEL NAME	ACRES
MC-1	Meyers Chuck	169

References

Data acquired from a variety of sources of differing accuracy, precision and reliability. Features represented by the data may not represent accurate geographic locations.

Disclaimer

The USDA Forest Service makes no warranty, expressed or implied regarding the data displayed on this map, and reserves the right to correct, update, modify, or replace this information without notification.

- Alaska Mental Health Trust Authority To Be Exchanged
- Surface Ownership**
- National Forest System Lands
- Non - National Forest System Lands

0 0.15 0.3 0.6
Miles

Map Creation Date - 09-19-2016
Map Revision Date - 09-19-2016 \ Version 1

Sheet 5 of 9

Alaska Mental Health Trust Act of 2016

Legislative Map Senate Bill No.:

Meyers Chuck Area
169 Approximate Acres

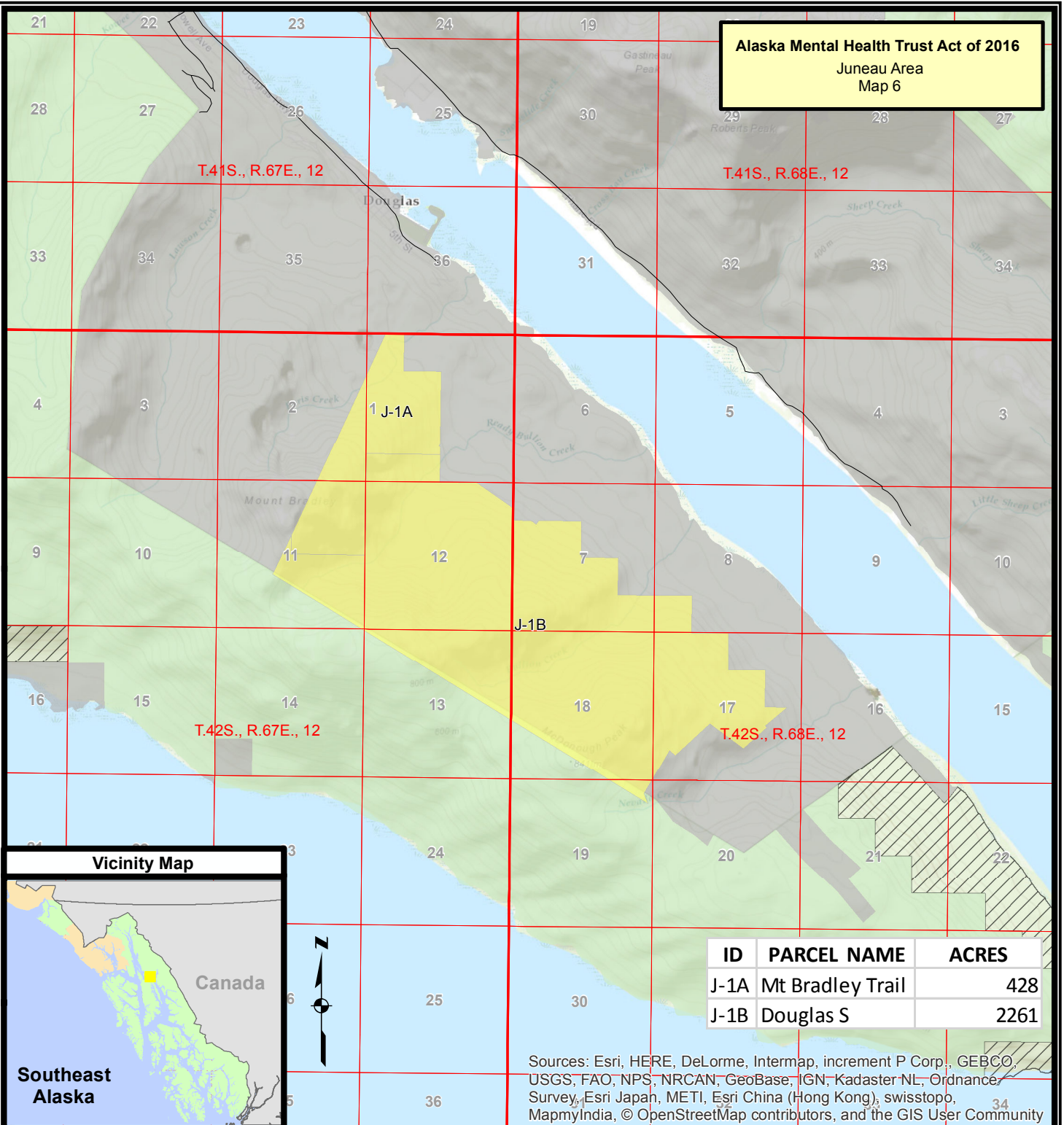


U.S. Forest Service - Alaska Region
Tongass National Forest
Alaska At-Large U.S. Congressional District



Copies of this map are available for public inspection
in the Office of the Regional Forester, R10, Juneau, Alaska.

Alaska Mental Health Trust Act of 2016 Juneau Area Map 6



ID	PARCEL NAME	ACRES
J-1A	Mt Bradley Trail	428
J-1B	Douglas S	2261

Sources: Esri, HERE, DeLorme, Intermap, increment P Corp., GEBCO, USGS, FAO, NPS, NRCAN, GeoBase, IGN, Kadaster NL, Ordnance Survey, Esri Japan, METI, Esri China (Hong Kong), swisstopo, MapmyIndia, © OpenStreetMap contributors, and the GIS User Community

References

Data acquired from a variety of sources of differing accuracy, precision and reliability. Features represented by the data may not represent accurate geographic locations.

Disclaimer

The USDA Forest Service makes no warranty, expressed or implied regarding the data displayed on this map, and reserves the right to correct, update, modify, or replace this information without notification.

Alaska Mental Health Trust Authority To Be Exchanged

Surface Ownership

- State of Alaska
- National Forest System Lands
- Non - National Forest System Lands

0 0.425 0.85 1.7
Miles

Map Creation Date - 09-19-2016
Map Revision Date - 09-19-2016 \ Version 1

Sheet 6 of 9

Alaska Mental Health Trust Act of 2016

Legislative Map Senate Bill No.:

Juneau Area
2689 Approximate Acres



U.S. Forest Service - Alaska Region
Tongass National Forest
Alaska At-Large U.S. Congressional District



Copies of this map are available for public inspection
in the Office of the Regional Forester, R10, Juneau, Alaska.

Alaska Mental Health Trust Act of 2016 Shelter Cove Area Map 7

Revilla George W
Easement - 10 Years

T.73S., R.92E., 12

T.73S., R.91E., 12

Vicinity Map

Southeast
Alaska

Canada

ID	PARCEL NAME	ACRES
Shelter Cove	Shelter Cove	8224

Sources: Esri, HERE, DeLorme, Intermap, increment P Corp., GEBCO, USGS, FAO, NPS, NRCAN, GeoBase, IGN, Kadaster NL, Ordnance Survey, Esri Japan, METI, Esri China (Hong Kong), swisstopo, MapmyIndia, © OpenStreetMap contributors, and the GIS User Community

References

Data acquired from a variety of sources of differing accuracy, precision and reliability. Features represented by the data may not represent accurate geographic locations.

Disclaimer

The USDA Forest Service makes no warranty, expressed or implied regarding the data displayed on this map, and reserves the right to correct, update, modify, or replace this information without notification.



- FSL Research Sites
- Naha LUDII
- USFS to Exchange

Surface Ownership

- State of Alaska
- National Forest System Lands
- Non - National Forest System Lands

0 0.425 0.85 1.7
Miles

Map Creation Date - 09-19-2016
Map Revision Date - 09-19-2016 \ Version 1

Sheet 7 of 9

Alaska Mental Health Trust Act of 2016

Legislative Map Senate Bill No.:

Shelter Cove Area
8224 Approximate Acres

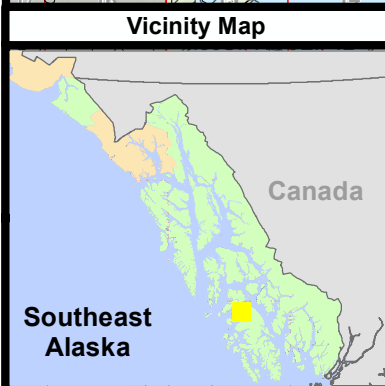
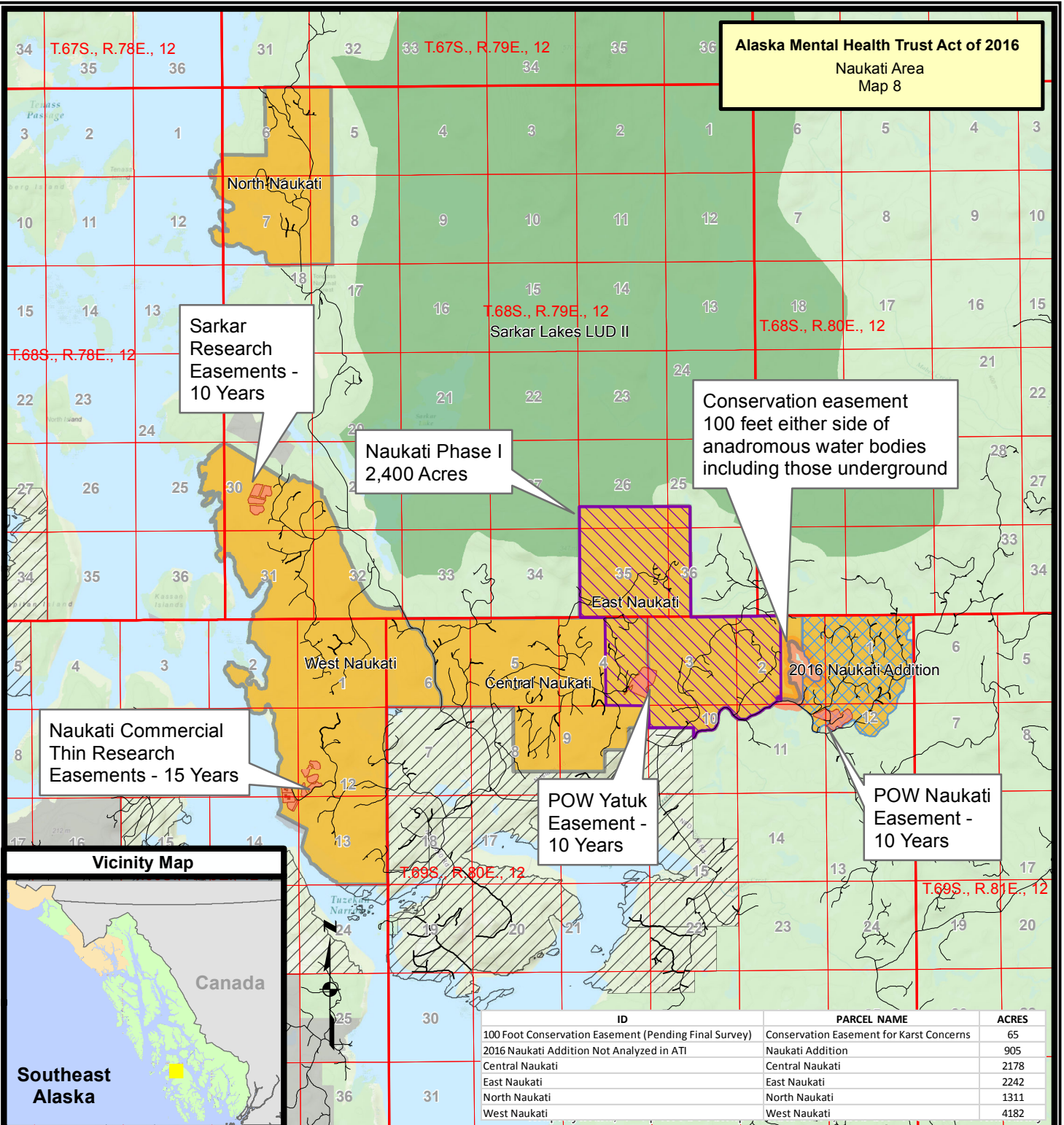


U.S. Forest Service - Alaska Region
Tongass National Forest
Alaska At-Large U.S. Congressional District



Copies of this map are available for public inspection
in the Office of the Regional Forester, R10, Juneau, Alaska.

Alaska Mental Health Trust Act of 2016
Naukati Area
Map 8



ID	PARCEL NAME	ACRES
100 Foot Conservation Easement (Pending Final Survey)	Conservation Easement for Karst Concerns	65
2016 Naukati Addition Not Analyzed in ATI	Naukati Addition	905
Central Naukati	Central Naukati	2178
East Naukati	East Naukati	2242
North Naukati	North Naukati	1311
West Naukati	West Naukati	4182

References

Data acquired from a variety of sources of differing accuracy, precision and reliability. Features represented by the data may not represent accurate geographic locations.

Disclaimer

The USDA Forest Service makes no warranty, expressed or implied regarding the data displayed on this map, and reserves the right to correct, update, modify, or replace this information without notification.

- Naukati Phase I
- Sarkar Lakes LUDII
- FSL Research Sites
- 2016 Naukati Addition Not Analyzed in ATI
- USFS To Exchange
- 200Ft Wide Underground Stream Conservation Easement
- Surface Ownership
- State of Alaska
- National Forest System Lands
- Non - National Forest System Lands

0 0.5 1 2 Miles

Map Creation Date - 09-19-2016
Map Revision Date - 11-28-2016 \ Version 2

Sheet 8 of 9

Alaska Mental Health Trust Act of 2016

Legislative Map Senate Bill No.:

Naukati Area
10883 Approximate Acres



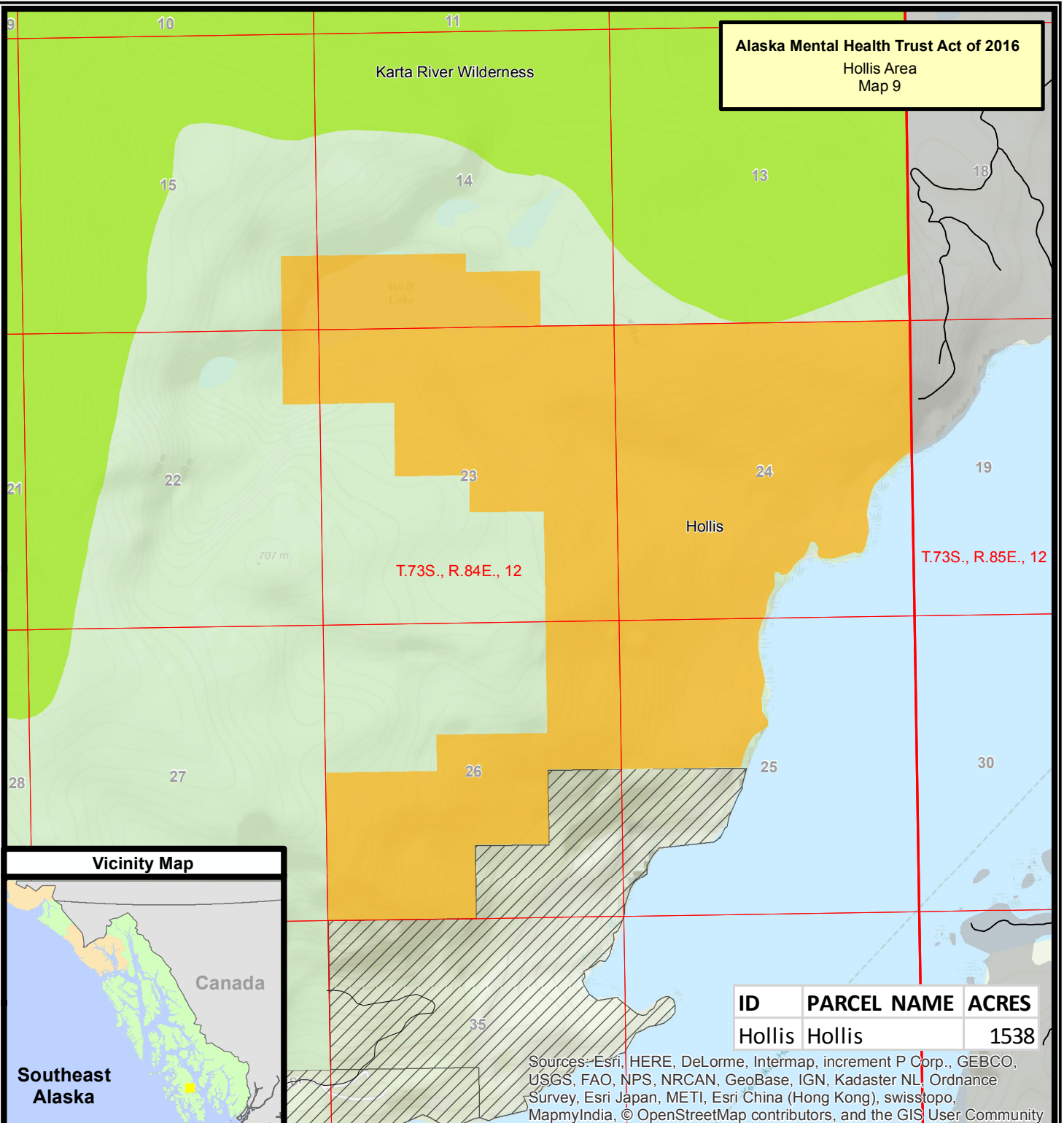
U.S. Forest Service - Alaska Region
Tongass National Forest
Alaska At-Large U.S. Congressional District



Copies of this map are available for public inspection in the Office of the Regional Forester, R10, Juneau, Alaska.

Alaska Mental Health Trust Act of 2016

Hollis Area
Map 9



Vicinity Map



ID	PARCEL NAME	ACRES
Hollis	Hollis	1538

Sources:-Esri, HERE, DeLorme, Intermap, increment P Corp., GEBCO, USGS, FAO, NPS, NRCAN, GeoBase, IGN, Kadaster NL, Ordnance Survey, Esri Japan, METI, Esri China (Hong Kong), swisstopo, MapmyIndia, © OpenStreetMap contributors, and the GIS User Community

References

Data acquired from a variety of sources of differing accuracy, precision and reliability. Features represented by the data may not represent accurate geographic locations.

Disclaimer

The USDA Forest Service makes no warranty, expressed or implied regarding the data displayed on this map, and reserves the right to correct, update, modify, or replace this information without notification.



- Karta River Wilderness
- USFS to Exchange
- Surface Ownership**
 - State of Alaska
 - National Forest System Lands
 - Non - National Forest System Lands

0 0.2 0.4 0.8 Miles

Map Creation Date - 09-19-2016
Map Revision Date - 09-19-2016 \ Version 1

Sheet 9 of 9

Alaska Mental Health Trust Act of 2016

Legislative Map Senate Bill No.:

Hollis Area
1538 Approximate Acres



U.S. Forest Service - Alaska Region
Tongass National Forest
Alaska At-Large U.S. Congressional District



Copies of this map are available for public inspection in the Office of the Regional Forester, R10, Juneau, Alaska.