

PLAT

of
U.S. SURVEY NO. 2465
of the

SGOW BAY GROUP OF HOMESITES

Executed under the Act of Congress,
Approved MAY 26, 1934

situated

IN LOTS 1 AND 2, SEC. 23, T. 59 S., R. 79 E., ON EAST SIDE
OF MITKOF HIGHWAY, ABOUT 6 1/2 MILES S.E. OF PETERS -
BURG
TERRITORY OF ALASKA

Area: 23.45 acres
Declination: 31° 00' E.
Scale: 3 chains to the inch

Latitude 56° 44' 05" N. Longitude 132° 56' W.

Survey executed by

F. W. WILLIAMSON, CADASTRAL ENGINEER, G. L. O.

JULY 22 - 31, 1934

CERTIFICATE OF APPROVAL
PUBLIC SURVEY OFFICE
Juneau, Alaska, JUNE 17, 1940

The original field notes of Survey No. 2465, of the
SGOW BAY GROUP OF HOMESITES

from which this plat has been made, have been examined
and approved, and are on file in this office, and I hereby
certify that they furnish such an accurate description of
said claim as will, if incorporated into a patent, serve fully
to identify the premises, and that such reference is made
therein to natural objects and permanent monuments, as
will perpetuate and fix the Locus thereof.

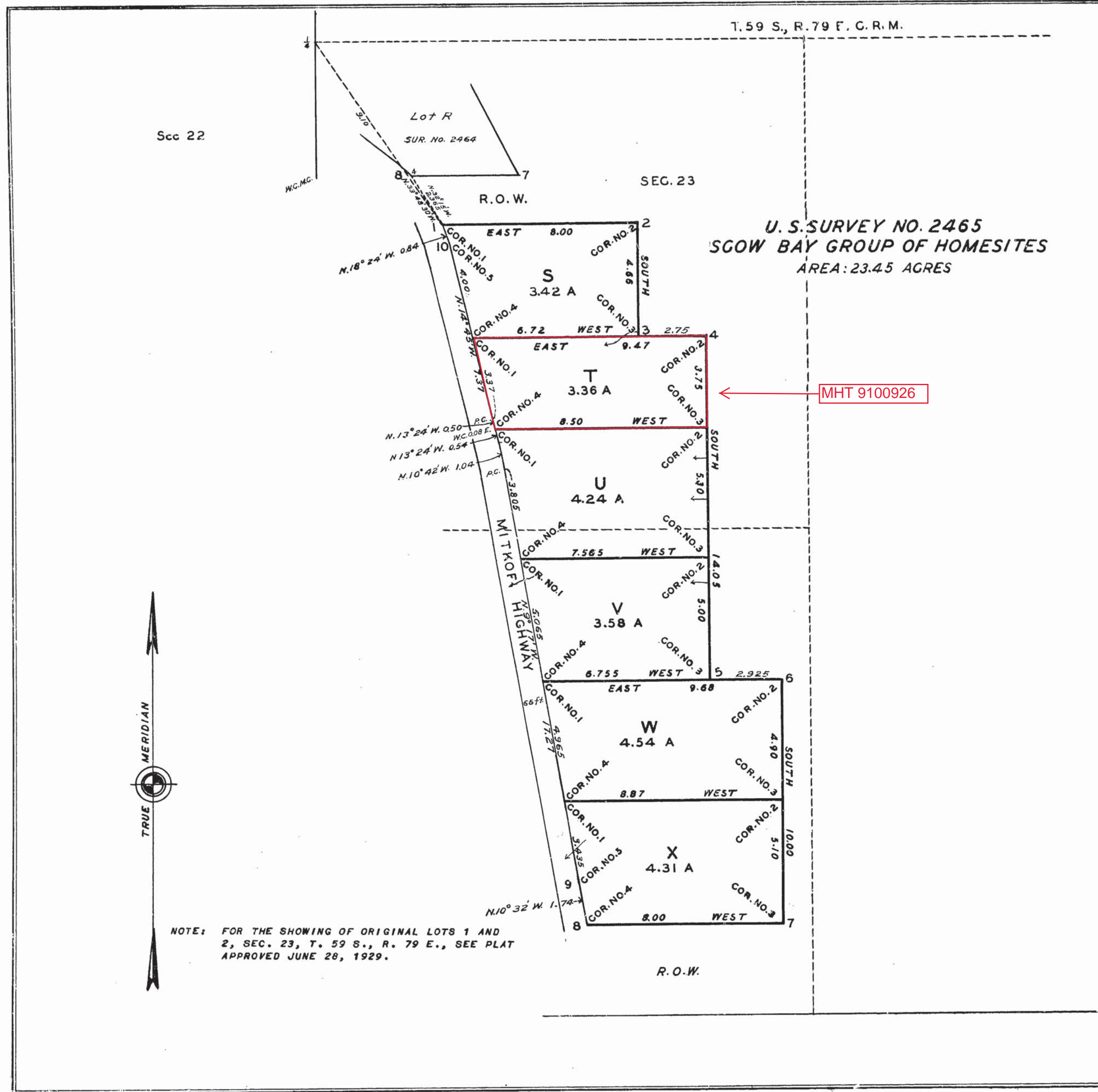
And I further certify that this is a correct plat of
said claim, made in conformity with said original field
notes of the survey thereof, and the same is hereby ap-
proved.

Geo. A. Parks
District Cadastral Engineer

UNITED STATES
DEPARTMENT OF THE INTERIOR
GENERAL LAND OFFICE
Washington, D.C., JUNE 19, 1941

The survey represented by this plat having been cor-
rectly executed in accordance with the requirements of
law and the regulations of this office, is hereby accepted.

W. C. Howell
ACTING ASSISTANT COMMISSIONER



Sec 22

T. 59 S., R. 79 E. C. R. M.

SEC. 23

U. S. SURVEY NO. 2465
SGOW BAY GROUP OF HOMESITES
AREA: 23.45 AGRES

MHT 9100926



NOTE: FOR THE SHOWING OF ORIGINAL LOTS 1 AND
2, SEC. 23, T. 59 S., R. 79 E., SEE PLAT
APPROVED JUNE 28, 1929.

R. O. W.

W. C. Howell
ACTING ASSISTANT COMMISSIONER