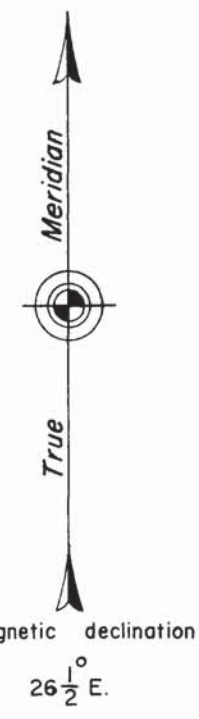
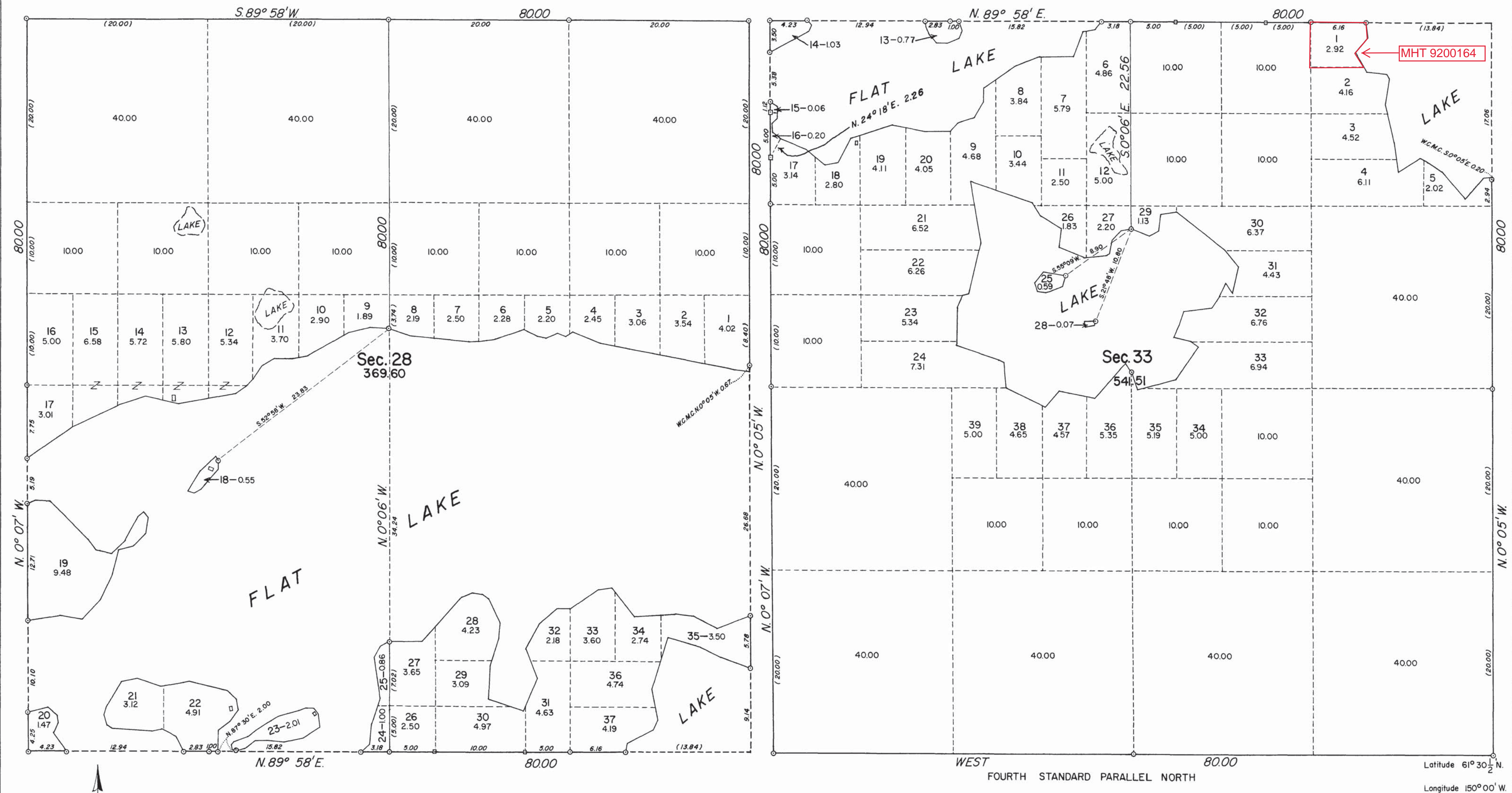


TOWNSHIP 17 NORTH, RANGE 4 WEST, OF THE SEWARD MERIDIAN, ALASKA



This plat represents a portion of the extension survey and the partial subdivision of secs. 28 and 33 executed by Hobart B. Hyatt, Cartographer (Cadastral), during the period August 15, 1955 to April 17, 1957, under Special Instructions for Group No. 75, Alaska, dated July 15, 1949.

The previous surveys in this township are shown upon the plats accepted March 27, 1952.



○ INDICATES AN IRON POST WITH BRASS CAP  
 □ INDICATES A WOODEN POST  
 Area Surveyed, 911.11 Acres

UNITED STATES DEPARTMENT OF THE INTERIOR  
 BUREAU OF LAND MANAGEMENT  
 Washington, D. C. January 19, 1959

This plat is strictly conformable to the approved field notes, and the survey, having been correctly executed in accordance with the requirements of law and the regulations of this Bureau, is hereby accepted.

For the Director  
*Earl G. Harrington*  
 Cadastral Engineering Staff Officer