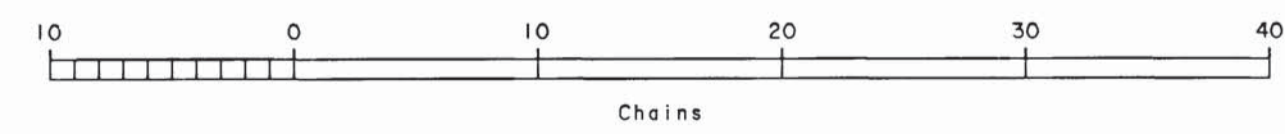
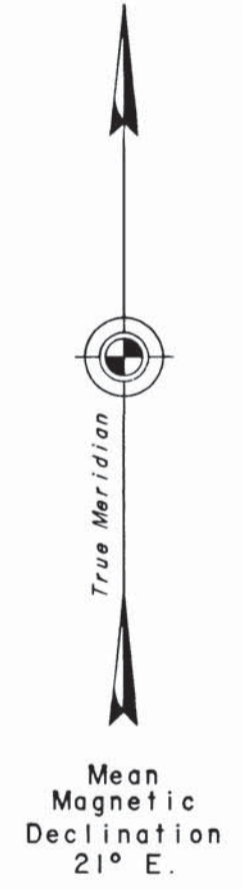
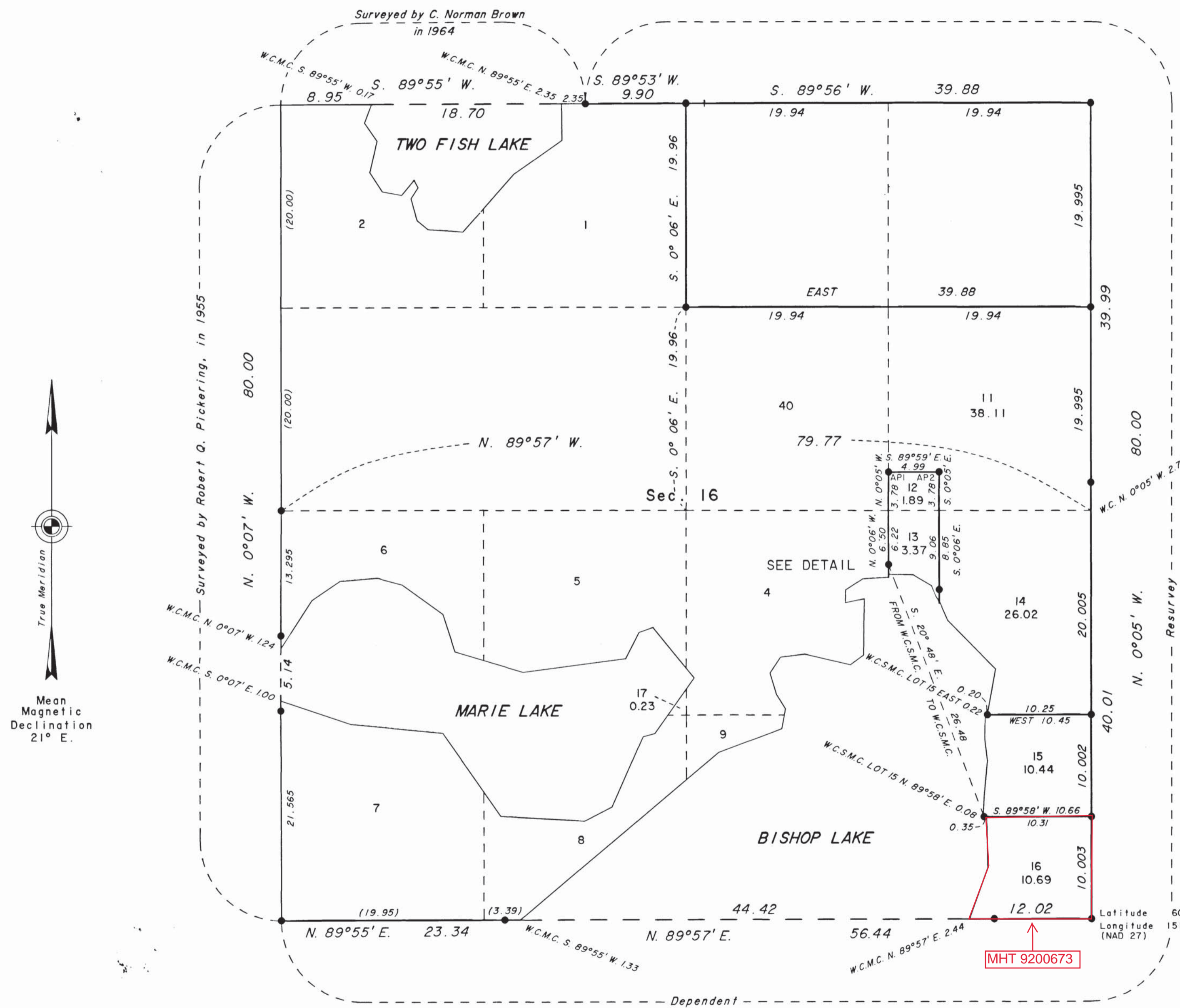
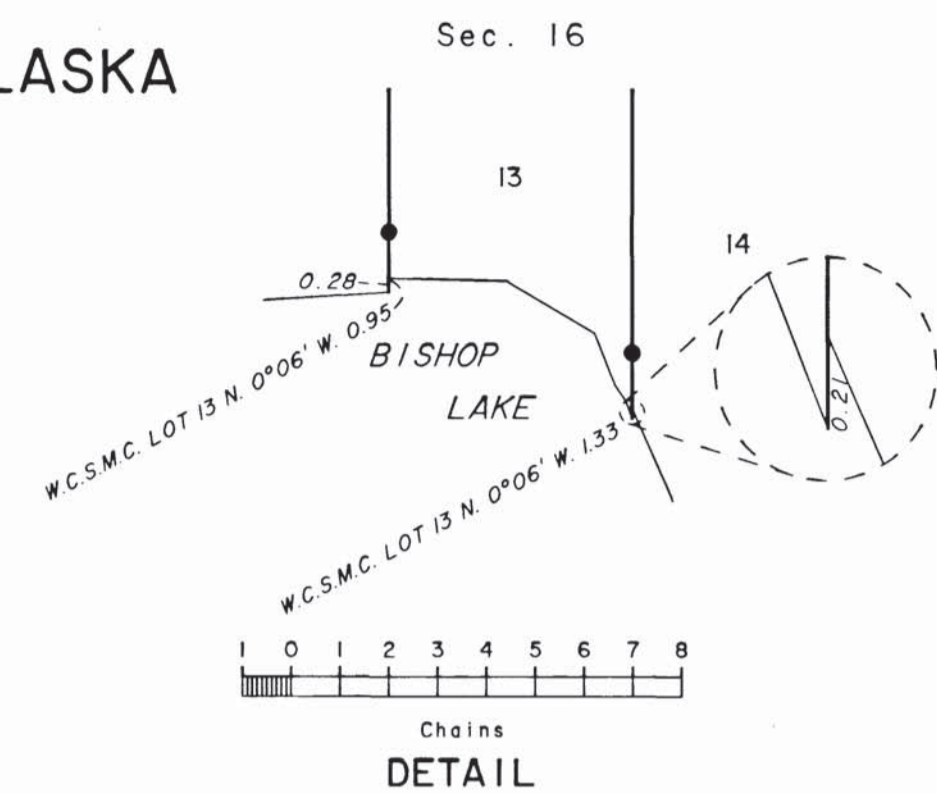


TOWNSHIP 7 NORTH, RANGE 11 WEST, OF THE SEWARD MERIDIAN, ALASKA DEPENDENT RESURVEY AND SUBDIVISION OF SECTION 16



Area Surveyed: 0.23 Acres



The history of surveys is contained in the field notes.

This plat and the field notes represent the dependent resurvey of portions of the subdivisional lines, the subdivision of Section 16 and remainders of portions of Bishop Lake, of section 16, in Township 7 North, Range 11 West, Seward Meridian, Alaska.

Except as indicated on this plat, the lottings and areas are as shown on the plat accepted May 12, 1966.

This survey was executed by Marshal D. Wade, Cadastral Surveyor, July 3 through October 25, 2000, in accordance with the specifications set forth in the Manual of Surveying Instructions, 1973, and Special Instructions for Group No. 754, Alaska, dated March 27, 2000.

Acceptance of this survey does not purport to transfer any interest in submerged lands to which the State of Alaska is entitled under the Equal Footing Doctrine and Section 6(m) of the Alaska Statehood Act, P.L. 85-508, notwithstanding the use, location, or absence of meander lines to depict water bodies.

UNITED STATES DEPARTMENT OF THE INTERIOR
BUREAU OF LAND MANAGEMENT
Anchorage, Alaska

This plat is strictly conformable to the approved field notes, and the survey, having been correctly executed in accordance with the requirements of law and the regulations of this Bureau, is hereby accepted.

For the Director

George P. Smith 11 DECEMBER 2001
Date

Deputy State Director for Cadastral Survey, Alaska