

MENTAL HEALTH TRUST BOARD PRESENTATION
MAY 4, 2017

ADOC DEMOGRAPHICS

SNAPSHOT OF ADOC

Current 2017 Costs:

	Yearly	Daily
Institutions (hard beds)	\$ 54,611.30	\$ 149.62
Community Residential Centers (soft beds)	\$ 38,416.25	\$ 105.25
Electronic Monitoring	\$ 8,073.80	\$ 22.12
Probation & Parole	\$ 3,423.70	\$ 9.38

- Minorities overrepresented
- Increase in nonviolent offenders (serving more time)
- Increase in female and elderly prisoners
- Increase in pretrial offenders

System cannot sustain as is:

Over capacity prison system

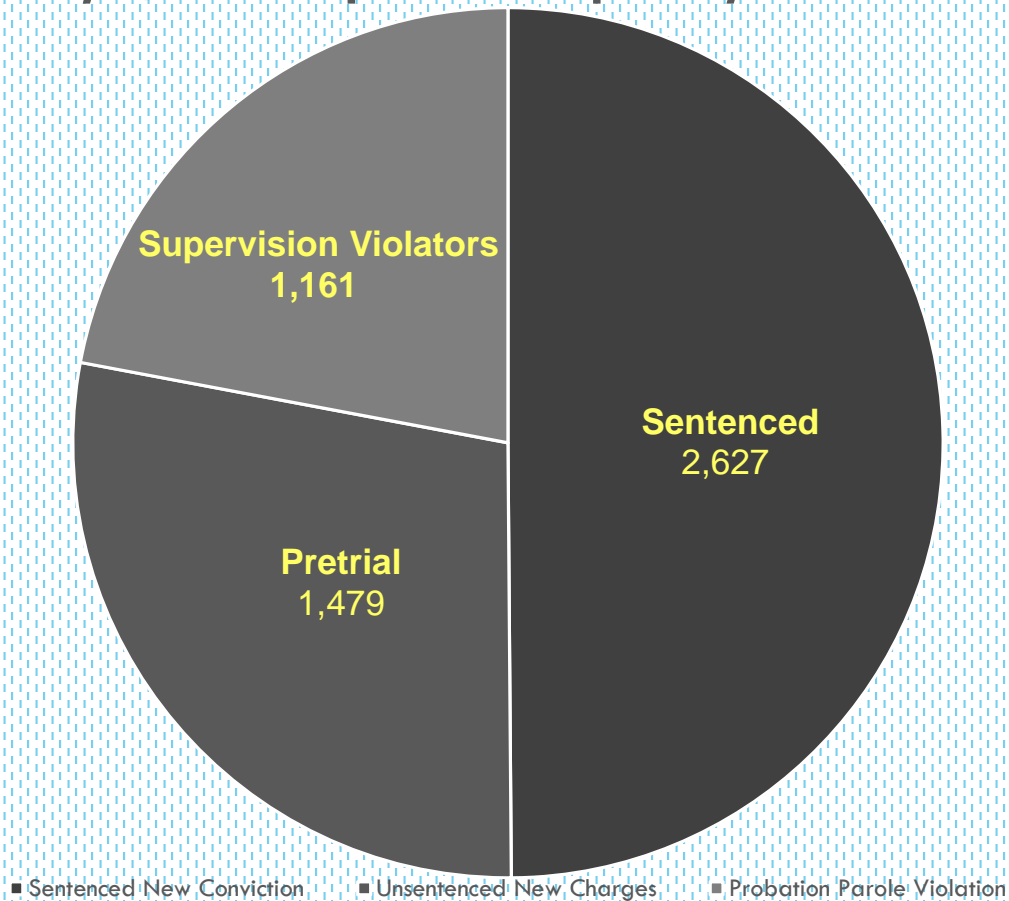
Displaced Native Alaskans

Need for increased access to treatment and services

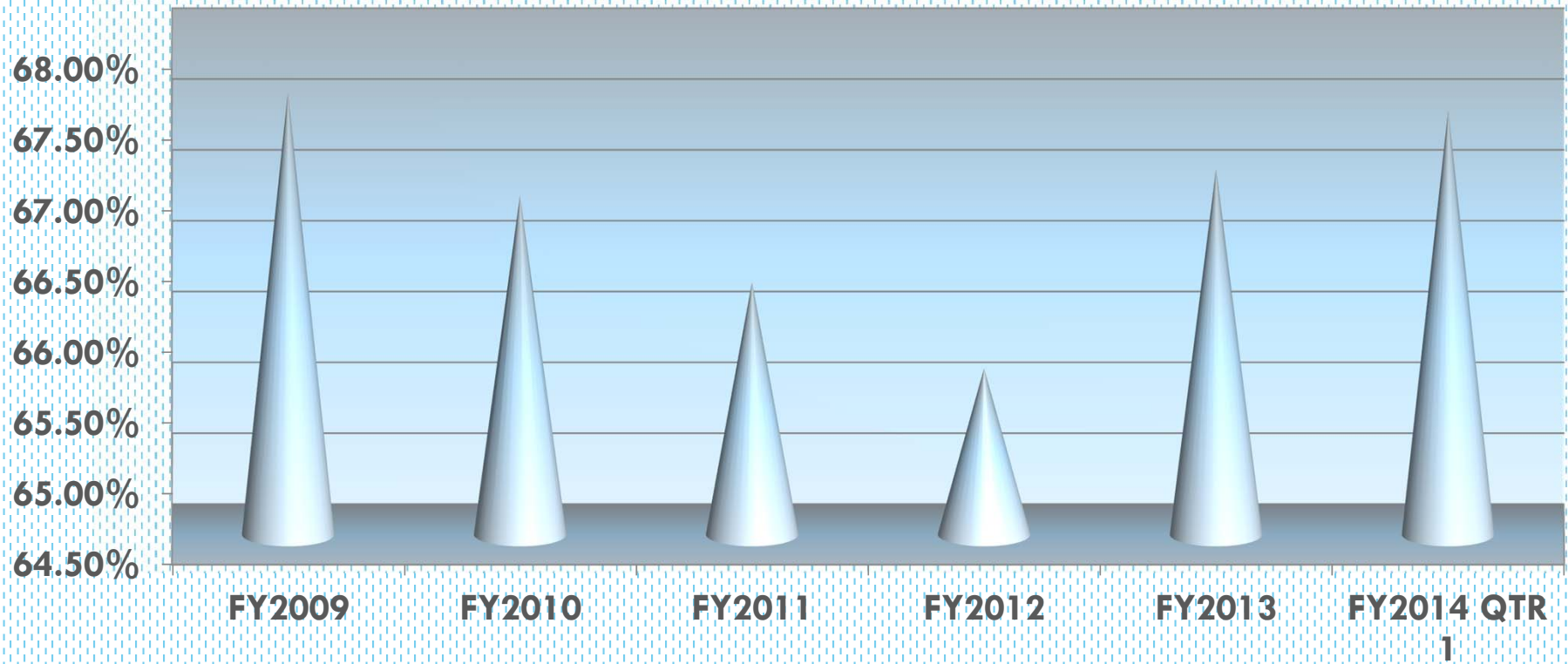
Need for more effective individualized case management

Alaska's Incarcerated Population

July 1, 2014 Population Report by Status



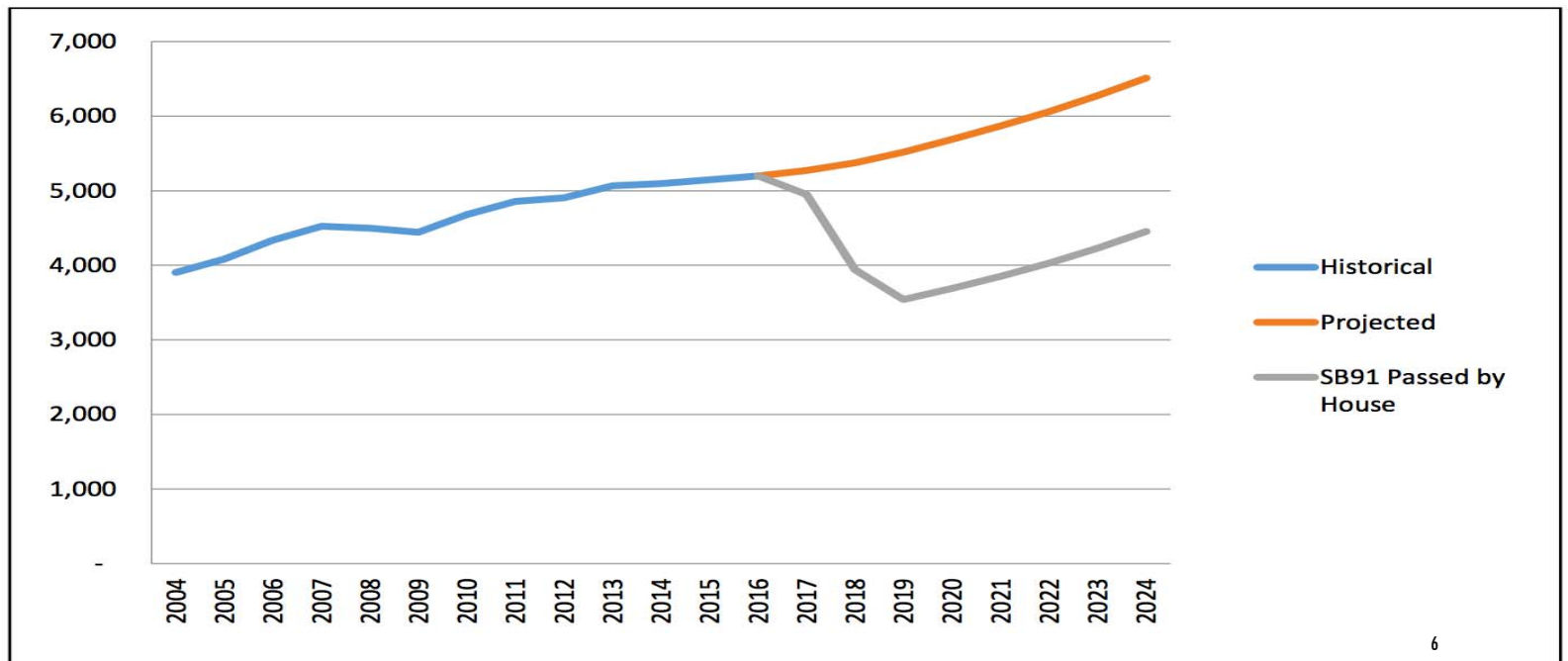
FELONY RECIDIVISM RATES



REFORM, REINVESTMENT AND ADOC

Current efforts expected to avert projected prison growth through 2024 and reduce the average prison population by 13% saving an estimated \$380 million in State spending and reinvesting \$98.8 million

- Pretrial
- Sentencing
- Parole
- Community Supervision
- Victim Rights
- Reentry



RECIDIVISM DRIVERS

Front End:

- ❑ The longer low-risk defendants are detained before trial, the more likely they are to commit a new crime within two years of case disposition.
- ❑ One study found that low-risk defendants who were held in jail for 2-3 days were 39% more likely to be arrested than those who were released on the first day. Those held 4-7 days were 50% more likely to be arrested, and 8-15 days were 56% more likely.
- ❑ Low-risk offenders will learn anti-social behaviors from higher-risk offenders

Back End:

- ❑ Unmatched treatment and supervision needs of individuals; pro-social networks of low-risk offenders is disrupted with intensive (not needed) interventions.
- ❑ Transitional and Release plan not developed through evidence-based practices
- ❑ Referrals for community made post-release

PRETRIAL DIVISION

PRETRIAL SERVICES

1973

Alaska Judicial Council

Report on Repeat Bail Recidivists
Recommendation to establish a pretrial agency

2003

Alaska Criminal Justice Council

Legislative Recommendations
Establish pretrial processes , supervision, and diversion

2009

Alaska Law Review Publication

Author Elizabeth Johnston
Alaska should develop an independent Pretrial Services Agency

2015

Alaska Judicial Council

AJC Sentencing Alternatives Workgroup Proposals
Recommendation for pretrial diversion and deferred disposition

BEST PRACTICES IN PRETRIAL



JANUARY 2018

- Implement Pretrial Services for the state of Alaska**
- Defendants will be assessed within 24 hours**
- Low risk offenders may receive monitoring if appropriate**
- Moderate and High risk offenders may receive supervision if appropriate**

PRETRIAL RISK ASSESSMENT

Measures two risk components:

- 1. The likelihood that someone will Fail To Appear (FTA) for scheduled court hearings;**
- 2. The likelihood that someone will have a New Criminal Arrest (NCA) while during pretrial release status.**

PRETRIAL FUNCTIONS

Assessment

Low, Moderate, High, with a report to the court within 24 hours



Booking or Summons

Assessment & Initial Appearance



Initial Appearance

The Court has the option for pretrial supervision at this juncture.

Monitoring

Low/Moderate risk defendants will be monitored.



LOW

MOD
HIGH

Diversion

Supervision

Moderate & High risk defendants, if released, will be supervised on standard or enhanced pretrial supervision.

Diversion

- *Mental Health
- *Tribal Courts
- *Substance Abuse

LIMITATIONS

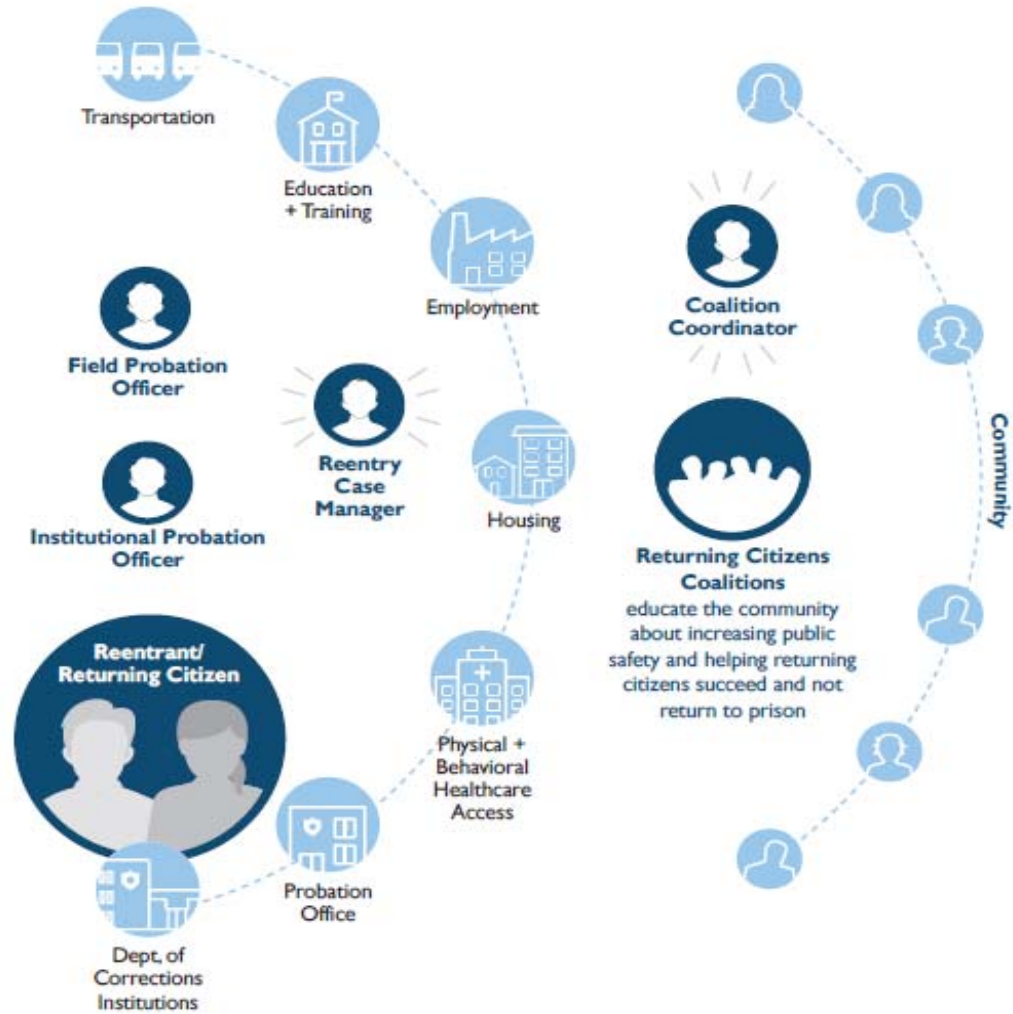
- ❖ **A risk assessment tool will not predict behavior 100% of the time for 100% of the population.**
- ❖ **A tool will not replace experienced and quality professionals, but it does lead to better decision making.**
- ❖ **Despite some limitations of a risk assessment tool, this process is an enhancement to public safety and it fulfills a gap and a request of criminal justice professionals that has existed for more than 40 years.**

**C
O
L
L
A
B
O
R
A
T
I
O
N**

**P
A
R
T
N
E
R
S
H
I
P
S**

REENTRY EFFORTS

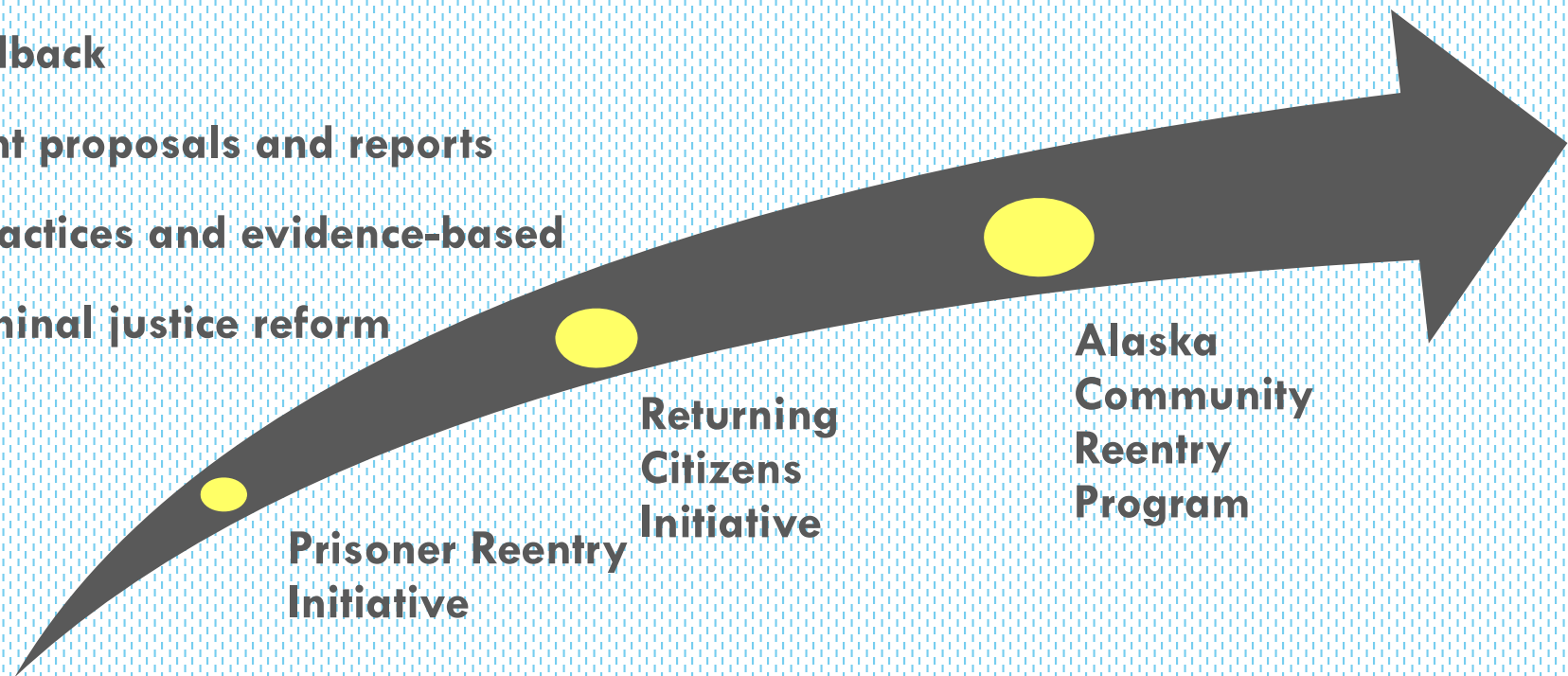
ALASKA COMMUNITY REENTRY PROGRAM



ON-GOING DEVELOPMENT

Programmatic changes occur as a result of:

- Stakeholder feedback
- Community grant proposals and reports
- National best practices and evidence-based practices for criminal justice reform



COALITIONS: FY 17 STATUS AND NEXT STEPS

Task	Existing Coalitions	Emerging + Expanding Coalitions
Coalition Development	<ul style="list-style-type: none"> Coalitions active; coordinators hired 	<ul style="list-style-type: none"> Forming coalitions Tier 2 hiring coordinator
Provider Assessment	<ul style="list-style-type: none"> Initial assessment completed 	<ul style="list-style-type: none"> Will be completed
Comprehensive Community Reentry Plan	<ul style="list-style-type: none"> Juneau: Completed Fairbanks, Mat-Su, Anchorage: Drafted 	<ul style="list-style-type: none"> Will be completed
Ongoing Community Development	<ul style="list-style-type: none"> Continuously assess community needs Collaborate with community to expand and enhance services 	<ul style="list-style-type: none"> Not addressing at this time
Institutional Presentations	<ul style="list-style-type: none"> Coordinate presentations with community partners 	<ul style="list-style-type: none"> Not addressing at this time
Case Management	<ul style="list-style-type: none"> Hire and train case managers Provide case management services 	<ul style="list-style-type: none"> Not addressing at this time

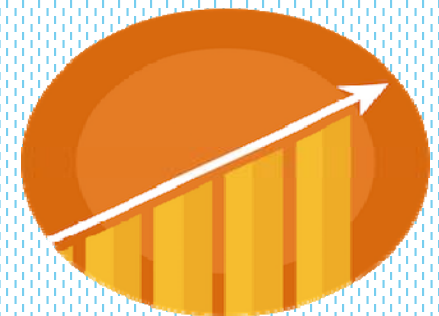
PROGRAM GOALS



1. **Promote public safety** by reducing the threat of harm to persons, families and their property by citizens returning to their communities from prison
2. **Increase success rates of reentrants** who transition from prison by fostering effective, evidence-based risk and need management and treatment, returning citizen accountability, and safe family, community and victim participation.
3. **Advance positive public health outcomes** such as access to health care services, substance use and mental health treatment, public benefit programs, and a reduction in the number of homeless reentrants.

LONG-TERM IMPACT OUTCOMES

Outcome	Measure
Reduction of Recidivism (measured at 30 days, 6 months, 1 year + 3 years)	Number of clients who stayed in the community and did not commit a felony level crime
	Number of clients who stayed in the community and did not commit any crimes
Access to Service	Number of services requested by or referred to participant
	Number of services received by participant
Public Health Advancement	Number of reentrants in permanent housing at discharge
	Number of reentrants enrolled in substance abuse treatment who successfully complete substance abuse treatment goals by discharge



WHERE TO NOW?

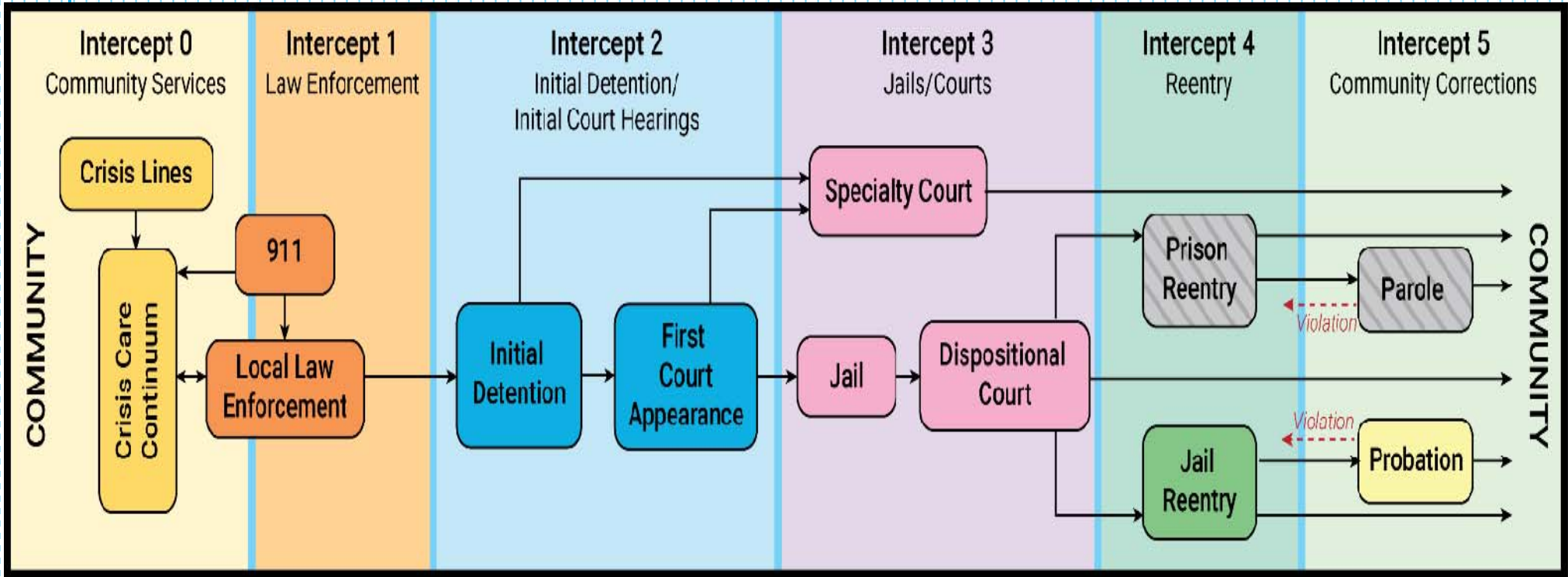
DIVERSION PROGRAM

- ❖ SB 91
- ❖ The Alaska Criminal Justice Commission (ACJC) recommending that “... the Department of Corrections (DOC) establish a voluntary pretrial diversion/intervention option for Alaskans with behavioral health disorders within DOC’s new Pretrial Services Program. ..”
- ❖ DOC requested a Diversion Planner position be funded by current BJA funding.
- ❖ The Diversion Planner will help identify a program for Alaska to divert offenders from incarceration.
 - ❖ Pretrial
 - ❖ Probation

DIVERSION PROGRAM DEVELOPER

- ❖ Collaborative partnerships to provide culturally competent and specific programming to the identified needs of the participant.
- ❖ Convene partners to assist in the development/implementation of the diversion program, including Medical Assisted Treatment (MAT) services.
- ❖ Partner with the National Behavioral Health Innovation Center, University of Colorado Anschutz Medical Campus.
- ❖ Train criminal justice and behavioral health stakeholders to work with the identified population.

SEQUENTIAL INTERCEPT MODEL



QUESTIONS?

Karen L. Cann

**Deputy Commissioner
Alaska Department of Corrections**

karen.cann@alaska.gov

Morgen Jaco

**Reentry Program Manager
Alaska Department of Corrections**

morgen.jaco@alaska.gov