



CHANGES IN THREE MAIN AREAS

Pretrial Phase Transition from use of money bail to use of risk assessment to help determine pretrial release (effective 1/1/18).

Sentencing Phase Reduce use of prison for low-level and nonviolent offenders (effective 7/11/2016).

Probation and Parole Improve supervision practices, increase use of supervision instead of prison, incentivize offenders to complete conditions of probation; increase use of parole release (effective 1/1/17).

RECOMMENDED CHANGES TO SB91

January 2017

- In response to complaints from law enforcement & prosecutors, Commission recommended changes to SB91.
- Two bills introduced last session (SB54 & SB55).
- SB55 – technical amendments – passed.
- SB54 – substantive amendments – passed Senate.
- Next session, SB54 has three committee referrals in House.

ONGOING ASSESSMENT & MONITORING

Criminal Justice Commission will:

Evaluate outcomes and impacts of changes

Measure recidivism rates

Document any savings from the reforms

Recommend to the legislature how savings should be reinvested

PRETRIAL RISK ASSESSMENT

Measures two risk components:

The likelihood that someone will Fail To Appear (FTA) for scheduled court hearings.

The likelihood that someone will have a New Criminal Arrest (NCA) while during pretrial release status.

PRETRIAL RISK ASSESSMENT

- Alaska's consultant, CJI, has delivered a risk assessment tool developed with Alaska data and stakeholder input.
- The tool is methodologically sound, but will require parties to work with two different scores – one for NCA and one for FTA.
- DOC and the Commission are now studying how best to align the tool with the existing legal framework.
- Training for attorneys and judges is planned for the fall.

PRETRIAL RISK ASSESSMENT

- DOC is standing up a new Division of Pretrial Services.
- Many logistical challenges are being worked through with stakeholders.
- A new database is being designed.

PRETRIAL RISK ASSESSMENT

Failure to Appear Scale

Six Risk Factors	Weights
Age at first arrest in DPS history	0 = 22 and older 1 = 21 and younger
Total number of prior FTA warrants ever	0 = 0 prior FTA warrants ever 1 = 1 prior FTA warrant ever 2 = 2 or more prior FTA warrants ever
Total number of prior FTA warrants in past 3 years	0 = 0 prior FTA warrants in past 3 years 1 = 1 prior FTA warrant in past 3 years 2 = 2 or more prior FTA warrants in past 3 years
Current FTA charge (or violation)	0 = No current FTA charge (or violation) 1 = Yes current FTA charge (or violation)
At least one property charge on current arrest/case	0 = No property charge on current arrest/case 1 = Yes at least one property charge on current arrest/case
At least one motor vehicle charge on current arrest/case (non-DUI)	0 = No motor vehicle charge on current arrest/case 1 = Yes at least one motor vehicle charge on current arrest/case
Total Points Possible	0 to 8 points possible

PRETRIAL RISK ASSESSMENT

New Criminal Arrest Scale

Six Risk Factors	Weights
Age at first arrest in DPS history	0 = 22 and older 1 = 21 and younger
Total number of prior arrests in past 5 years	0 = 0 prior arrests in past 5 years 1 = 1 to 2 prior arrests in past 5 years 2 = 3 or more prior arrests in past 5 years
Total number of prior convictions in past 3 years	0 = 0 prior convictions in past 3 years 1 = 1 prior conviction in past 3 years 2 = 2 or more prior convictions in past 3 years
Total number of prior probation sentences	0 = 0 prior probation sentences 1 = 1 prior probation sentence 2 = 2 or more prior probation sentences
Total number of prior probations sentences in past 5 years	0 = 0 prior probation sentences in past 5 years 1 = 1 prior probation sentence in past 5 years 2 = 2 or more prior probation sentences in past 5 years
Total number of prior incarcerations in past 3 years	0 = 0 prior incarcerations in past 3 years 1 = 1 or more prior incarcerations in past 3 years
Total Points Possible	0 to 10 points possible

PRETRIAL RISK ASSESSMENT

JOHN DOE DOB: 09/26/1986
 APSN ID: 7052264 DMV NO.: 7011580 AK ATN: 117754051
 Assessment Date <if rerun show version>: Arrest Date: 7/7/2017
 Defendant is currently on active Probation Supervision.

Case Number: 3AN-17-654348CR

Charges:

AS11.71.040 MICS 4 Misconduct Involving a Controlled Substance in the Fourth Degree
 AS25.35.030 Felony DUI Felony Driving Under the Influence (2+ Priors)

Failure to Appear Score: 3 – (Low)

OR Recommended

New Criminal Arrest Score: 8 – (Moderate)


OR Recommended

Note: The defendant has an **out of state criminal history**.

EM Recommendations: Based off of the NCA score of High it is recommended that the defendant is subject to electric monitoring (EM) with the specifications of alcohol monitoring and a curfew.

PRETRIAL RISK ASSESSMENT

#	If alcohol or illegal substance use is noted in the police report or charging documents, the court should consider and order the following conditions:
<input type="checkbox"/> 1	Do not consume or possess alcohol
<input type="checkbox"/> 2	Submit to testing for the use of alcohol.
<input type="checkbox"/> 3	Do not enter bars or liquor stores.
<input type="checkbox"/> 4	Do not use or possess illegal substances or drug paraphernalia.
<input type="checkbox"/> 5	Submit to testing for the use of illegal drugs.

	General Condition- Least restrictive required conditions to be on Division of Pretrial
1	Obey all federal, state, and local laws.
2	Obey all court orders and appear as directed.
3	Have no contact, direct, indirect, or through a third party with victim(s), potential witnesses, and/or co-defendant(s) unless specifically allowed by court order.
4	Report to the Division of Pretrial by the next business day following release from custody and as directed thereafter.
5	Notify the Division of Pretrial and your attorney of any change in physical address, telephone number and email address within 24 hours of the change.
6	Permit a Pretrial Officer or designee to visit your home for enforcement of any court-ordered conditions of release.
7	Submit to a warrantless search by a Pretrial Services Officer, upon reasonable suspicion, of your person, your personal property, your residence, or any vehicle or other property over which you have control for verifying compliance of conditions of release.
8	Do not leave the State of Alaska without written approval from the court.

PRETRIAL RISK ASSESSMENT

#	DUI Specific Conditions
<input type="checkbox"/> 1	Do not consume or possess any alcohol.
<input type="checkbox"/> 2	Do not enter bars and/or liquor stores.
<input type="checkbox"/> 3	Submit to random substance abuse testing for the use of alcohol.
<input type="checkbox"/> 4	Do not drive unless properly licensed and insured.

#	Drug Offense Specific Conditions
<input type="checkbox"/> 1	Do not use or possess inhalants, illegal drugs, un-prescribed controlled substances, and/or drug paraphernalia.
<input type="checkbox"/> 2	Submit to random substance abuse testing and refrain from obstructing or tampering with the efficiency and accuracy of such testing.
<input type="checkbox"/> 3	Do not associate with individuals who use or sell controlled substances nor enter or remain in places where illegal controlled substances are used, manufactured, grown or sold.
<input type="checkbox"/> 4	Submit to a warrantless search, upon reasonable suspicion, for inhalants, illegal drugs, un-prescribed controlled substances, and drug paraphernalia.
<input type="checkbox"/> 5	Abide by a curfew established by Pretrial Services.

PRETRIAL RISK ASSESSMENT

NCA Assessment	
SI Risk Factors	Weights
Age at first arrest in DPS history	1 = 21 and younger
Total number of prior arrests in past 5 years	2 = 3 or more prior arrests in past 5 years
Total number of prior convictions in past 3 years	2 = 2 or more prior convictions in past 3 years
Total number of prior probation sentences	2 = 2 or more prior probation sentences
Total number of prior probation sentences in past 5 years	2 = 2 or more prior probation sentences in past 5 years
Total number of prior incarcerations in past 3 years	1 = 1 or more prior incarcerations in past 3 years

FTA Assessment	
Six Risk Factors	Answers
Age at first arrest in DPS history	1 = 21 and younger
Total number of prior FTA warrants ever	1 = 1 prior FTA warrant ever
Total number of prior FTA warrants in past 3 years	0 = 0 prior FTA warrants in past 3 years
Current FTA charge (or violation)	0 = No current FTA charge (or violation)
At least one property charge on current arrest/case	1 = Yes at least one property charge on current arrest/case
At least one motor vehicle charge on current arrest/case (non-DUI)	0 = No motor vehicle charge on current arrest/case

DIVERSION PROGRAM PLANNER

Two Criminal Justice Planner positions posted:

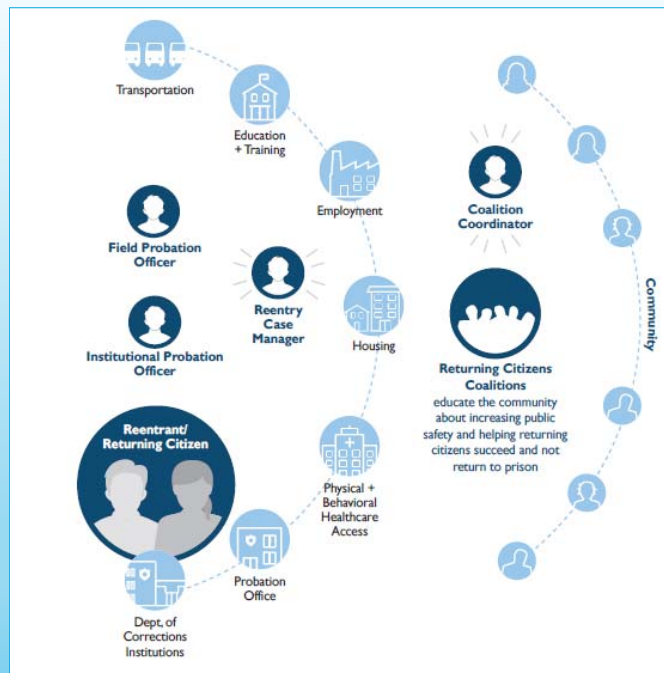
- Criminal Justice Coordinator
- Diversion Program Planner

DIVERSION PROGRAM PLANNER

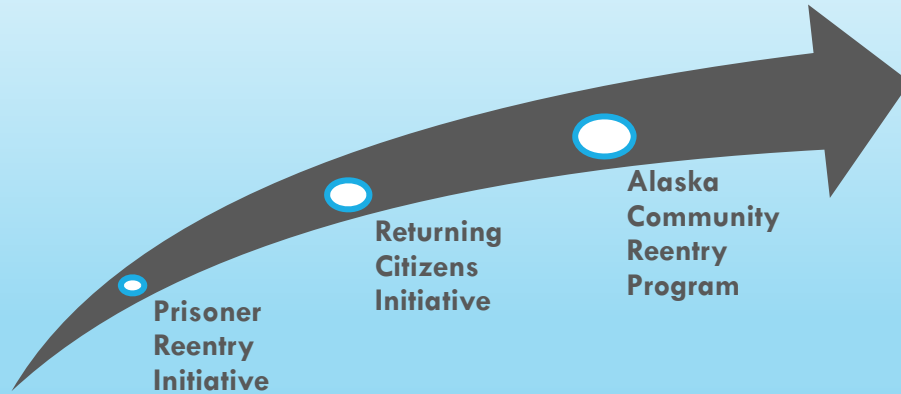
The Diversion Program Planner will:

- Work with the National Behavioral Health Innovation Center, University of Colorado and the Crime and Justice Institute for innovative ways to address behavioral health, substance abuse, comorbidity issues.
- Convene stakeholders to assist in the development of a program for Alaska to divert offenders from incarceration (Pretrial, Probation)
- Coordinate with the ACJC Behavioral Health Committee to create collaborative partnerships.

ALASKA COMMUNITY REENTRY PROGRAM



ON-GOING DEVELOPMENT



Coalition Staff Oversight



REENTRY COALITIONS

 	Community Grantee Roles + Responsibilities	COALITION Roles + Responsibilities	 
	<ul style="list-style-type: none"> • Has strong organizational commitment to safe neighborhoods and productive citizens. • Advises, informs and supports the Coalition with grants management • Manages coalition staff; works closely with coalition chairs to jointly supervise coalition staff. • Uses agency staff and other resources to help Coalition achieve results. 	<ul style="list-style-type: none"> • Has strong personal and community commitment to safe neighborhoods and productive citizens. • Supports and advises the Alaska Community Reentry Program. • Responsible for engaging community support of improved reentry services and educating on how to create safe neighborhoods. • Serve as advocates for the community's reentry efforts. 	

ON-GOING DEVELOPMENT

Programmatic changes occur as a result of:

- Stakeholder feedback
- Community grant proposals and reports
- National best practices and evidence-based practices for criminal justice reform

STATUS AND NEXT STEPS

Task	Existing Coalitions	Emerging + Expanding Coalitions
Coalition Development	Coalitions active; coordinators hired	New Coordinator: Kenai Peninsula New Coalitions: Nome, Dillingham, Ketchikan
Provider Assessment	Initial assessment: Drafted/In review	In progress
Comprehensive Community Reentry Plan	Juneau: Completed Fairbanks, Mat-Su, Anchorage: Drafted	FY18 - FY19
Ongoing Community Development	Continuously assess community needs Collaborate with community to expand and enhance services	FY18 - FY19
Institutional Presentations	Coordinate presentations with community partners	In progress
Case Management	Hire and train case managers Provide case management services	N/A at this time

PROGRAM GOALS

Promote public safety by reducing the threat of harm to persons, families and their property by citizens returning to their communities from prison

Increase success rates of reentrants who transition from prison by fostering effective, evidence-based risk and need management and treatment, returning citizen accountability, and safe family, community and victim participation.

Advance positive public health outcomes such as access to health care services, substance use and mental health treatment, public benefit programs, and a reduction in the number of homeless reentrants.

LONG-TERM IMPACT OUTCOMES

Outcome	Measure
Reduction of Recidivism <i>(measured at 30 days, 6 months, 1 year + 3 years)</i>	Number of clients who stayed in the community and did not commit a felony level crime
	Number of clients who stayed in the community and did not commit any crimes
Access to Service	Number of services requested by or referred to participant
	Number of services received by participant
Public Health Advancement	Number of reentrants in permanent housing at discharge
	Number of reentrants enrolled in substance abuse treatment who successfully complete substance abuse treatment goals by discharge

MAPPING FOR CONNECTIVITY

