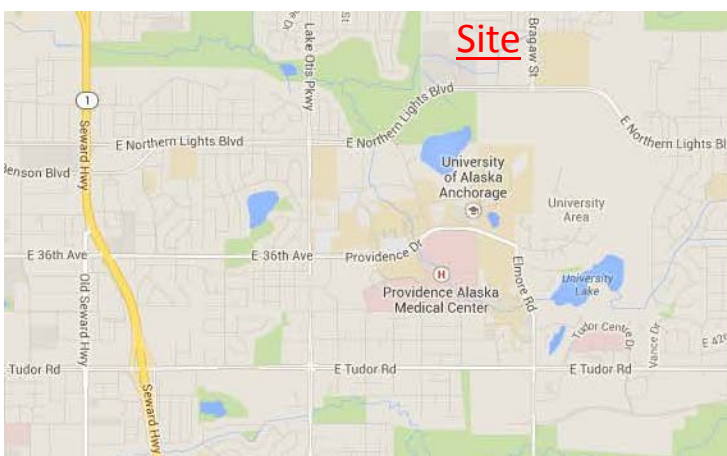
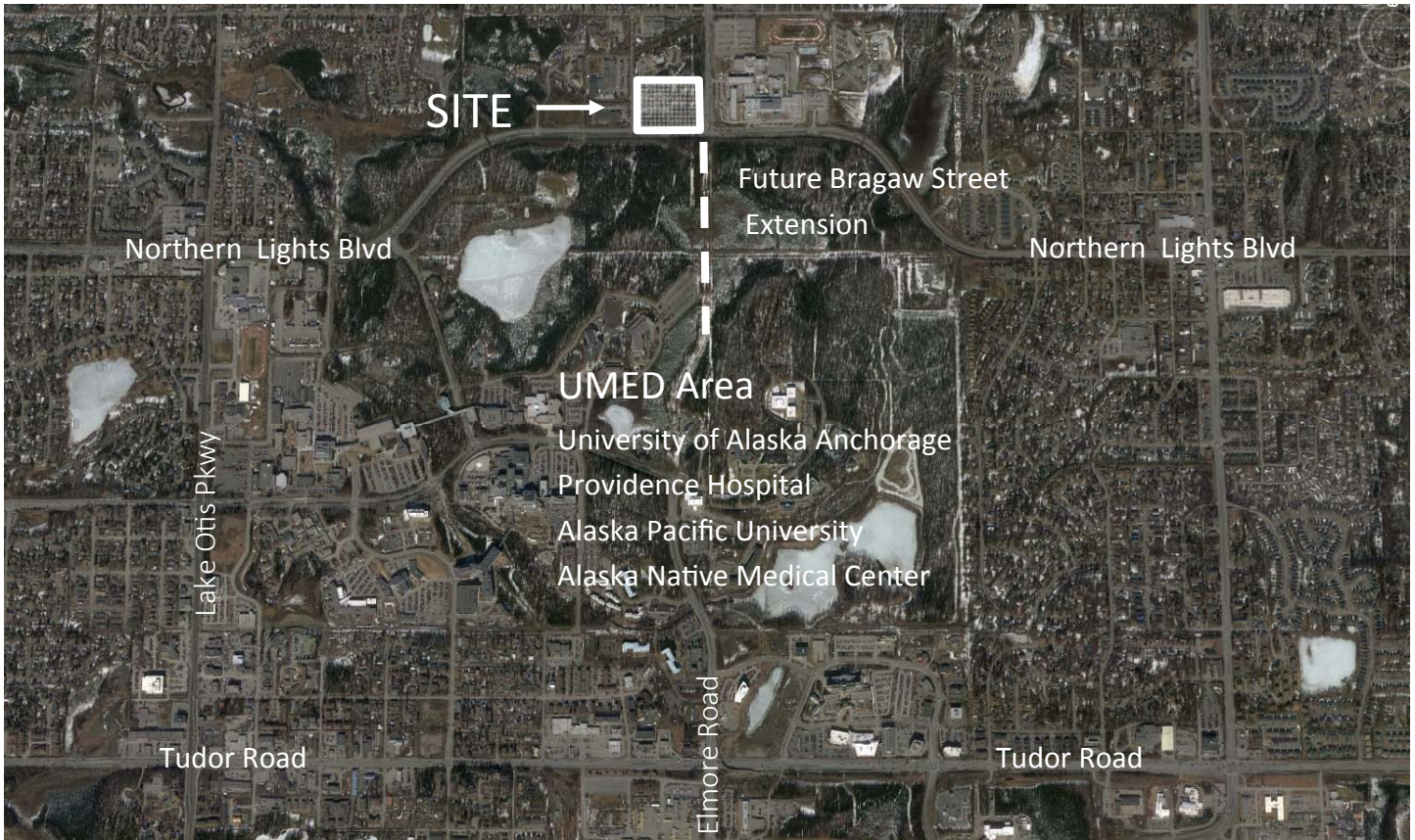


AVAILABLE FOR LEASE

UMED Development Parcel
NW Corner of Northern Lights Blvd & Bragaw Street
Anchorage, AK



Trust
Land Office

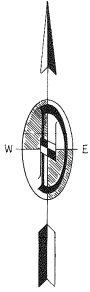


- Preferred Transaction: Build to suit or ground lease based on appraised value
- Excellent proximity within UMED area to Providence Hospital, University of Alaska - Anchorage, Alaska Pacific University, and Alaska Native Medical Center
- Frontage and high visibility on Bragaw Street & Northern Lights Blvd
- Approximately 12.09 acres; can be subdivided
- Zoning: PL -I
- All utilities to the site

7/22/14

CONTACT: Craig Driver
(907) 269-8735
Email: craig.driver@alaska.gov

2600 Cordova Street, Suite 100
Anchorage, AK 99503
www.mhtrustland.org



WINTERGREEN ST.

HUNDERBIRD

THIRD

ADD.

NORENE ST.

TERRACE

EAST

20th. AVE.

9

TRACT 5A

Existing Building

1
150,875 S.F.
3.46 AC.

Available

2
177,550 S.F.
4.08 AC.

Existing Building

Available

1
131,151 S.F.
3.01 AC.

Available

TRACT 3A
307,501 S.F.
7.06 AC.

Available

EAST

NORTHERN

LIGHTS BLVD.

BRAGAW

EAST ANCHORAGE HIGH SCHOOL

... S 89°55'45" E BASIS OF BEARINGS (66-86) ...
2638.09 (MEAS.) (263960 / 66-86)



Trust
Land Office