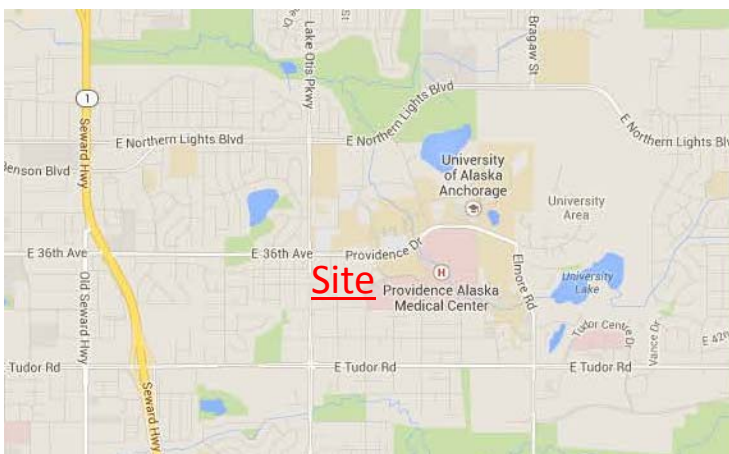


AVAILABLE FOR LEASE

UMED Development Parcel
NE Corner of 40th Avenue & Laurel Street
Anchorage, AK



Trust Land Office

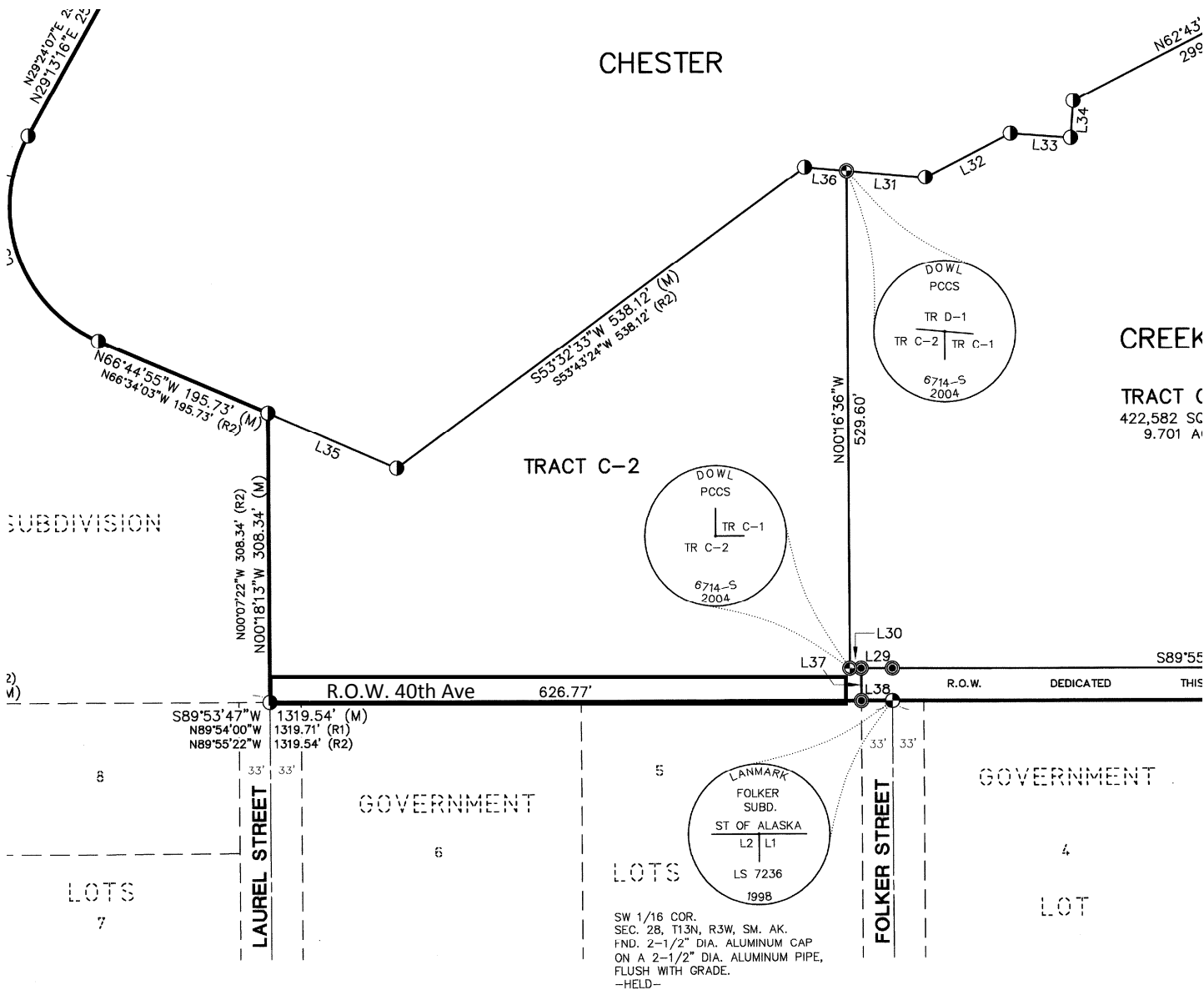


- Preferred Transaction: Build to suit or ground lease based on appraised value
- Excellent proximity within UMED area to Providence Hospital, University of Alaska - Anchorage, Alaska Pacific University, and Alaska Native Medical Center
- Frontage and high visibility on 40th Avenue
- Approximately 4.5 acres; can be subdivided
- Zoning: Residential-Office with Special Limitations (R-O SL)
- Utilities: Power, Gas, Telephone to the site; water & sewer within Laurel Street NW of the site

7/22/14

CONTACT: Craig Driver
(907) 269-8735
Email: craig.driver@alaska.gov

2600 Cordova Street, Suite 100
Anchorage, AK 99503
www.mhtrustland.org



Trust
Land Office