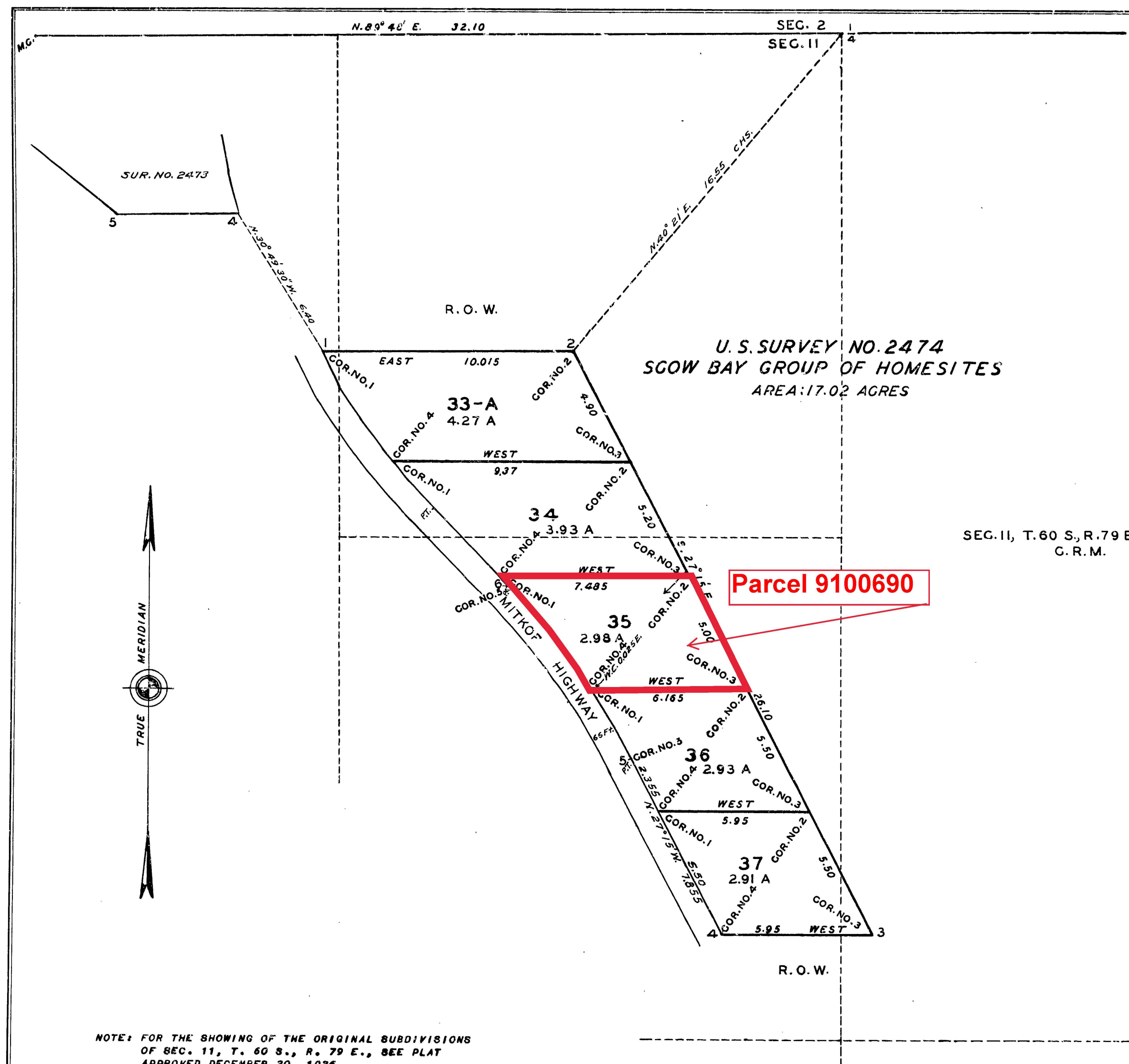


ORIGINAL



PLAT

of
U.S. SURVEY NO. 2474
of the

SCOW BAY GROUP OF HOMESITES

Executed under the Act of Congress,
Approved MAY 26, 1934

situated

IN LOTS 1 AND 2, THE N.E. $\frac{1}{4}$ N.W. $\frac{1}{4}$ AND THE N.E. $\frac{1}{4}$ SEC. II,
T. 60 S., R. 79 E., ON EAST SIDE OF MITKOF HIGHWAY,
ABOUT 10 MILES S.E. OF PETERSBURG
TERRITORY OF ALASKA

Area: 17.02 acres
Declination: 31° 00' E.
Scale: 3 chains to the inch

Latitude 56° 41' N. Longitude 132° 50' W.

Survey executed by

SEC. II, T. 60 S., R. 79 E.
C. R. M.

F. W. WILLIAMSON, CADASTRAL ENGINEER, G. L. O.

AUGUST 26-27, 1939

CERTIFICATE OF APPROVAL
PUBLIC SURVEY OFFICE

Juneau, Alaska, JULY 22, 1940.

The original field notes of Survey No. 2474, of the

SCOW BAY GROUP OF HOMESITES

from which this plat has been made, have been examined and approved, and are on file in this office, and I hereby certify that they furnish such an accurate description of said claim as will, if incorporated into a patent, serve fully to identify the premises, and that such reference is made therein to natural objects and permanent monuments, as will perpetuate and fix the Locus thereof.

And I further certify that this is a correct plat of said claim, made in conformity with said original field notes of the survey thereof, and the same is hereby approved.

Geo. A. Parks
District Cadastral Engineer

UNITED STATES
DEPARTMENT OF THE INTERIOR
GENERAL LAND OFFICE
Washington, D.C., JUNE 27, 1941

The survey represented by this plat having been correctly executed in accordance with the requirements of law and the regulations of this office, is hereby accepted.

Thos. C. Howell
ACTING ASSISTANT COMMISSIONER