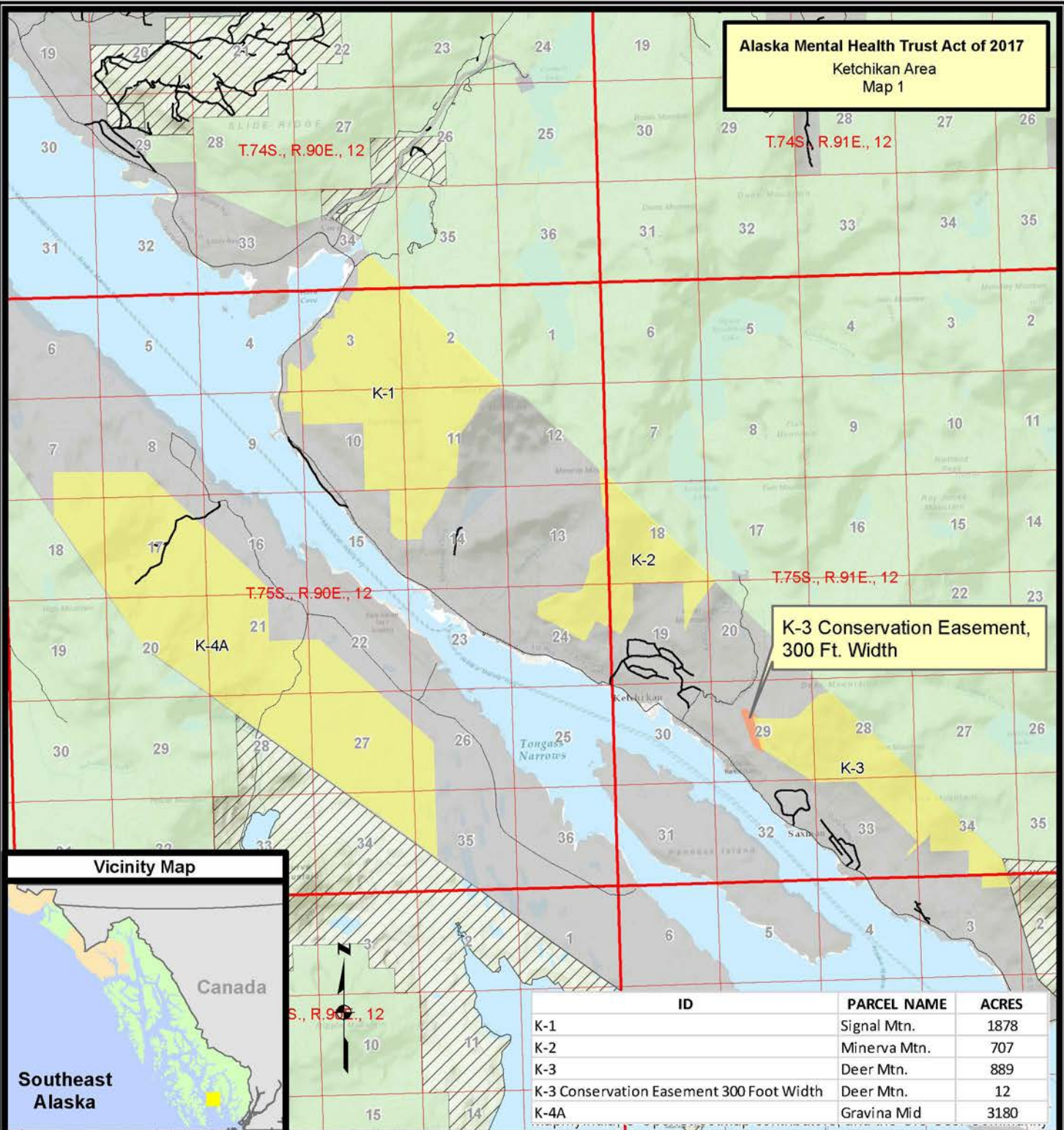


**Alaska Mental Health Trust Act of 2017**  
Ketchikan Area  
Map 1



**K-3 Conservation Easement, 300 Ft. Width**



ID	PARCEL NAME	ACRES
K-1	Signal Mtn.	1878
K-2	Minerva Mtn.	707
K-3	Deer Mtn.	889
K-3 Conservation Easement 300 Foot Width	Deer Mtn.	12
K-4A	Gravina Mid	3180

**References**

Data acquired from a variety of sources of differing accuracy, precision and reliability. Features represented by the data may not represent accurate geographic locations.

**Disclaimer**

The USDA Forest Service makes no warranty, expressed or implied regarding the data displayed on this map, and reserves the right to correct, update, modify, or replace this information without notification.

- Sheet 1 of 10
- Alaska Mental Health Trust Authority To Be Exchanged
  - Conservation Easements
  - Surface Ownership**
  - State of Alaska
  - National Forest System Lands
  - Non - National Forest System Lands



Map Creation Date - 09-19-2016  
Map Revision Date - 03-03-2017

**Alaska Mental Health Trust Act of 2017**

Legislative Map Bill Numbers: S131 & HR513

Ketchikan Area  
6666 Approximate Acres

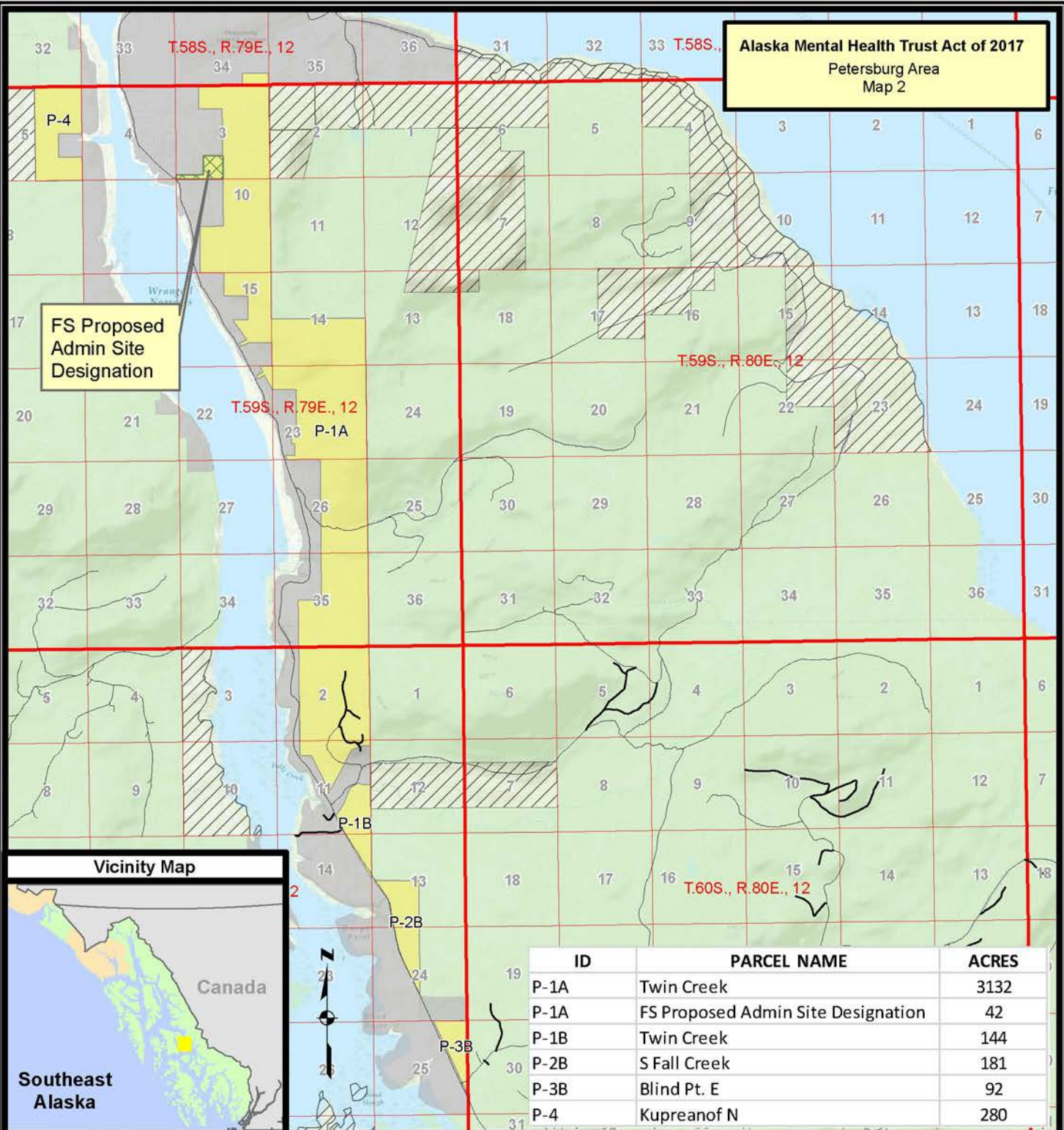


U.S. Forest Service - Alaska Region  
Tongass National Forest  
Alaska At-Large U.S. Congressional District



Copies of this map are available for public inspection in the Office of the Regional Forester, R10, Juneau, Alaska.

**Alaska Mental Health Trust Act of 2017**  
Petersburg Area  
Map 2



**FS Proposed Admin Site Designation**



ID	PARCEL NAME	ACRES
P-1A	Twin Creek	3132
P-1A	FS Proposed Admin Site Designation	42
P-1B	Twin Creek	144
P-2B	S Fall Creek	181
P-3B	Blind Pt. E	92
P-4	Kupreanof N	280

**References**

Data acquired from a variety of sources of differing accuracy, precision and reliability. Features represented by the data may not represent accurate geographic locations.

**Disclaimer**

The USDA Forest Service makes no warranty, expressed or implied regarding the data displayed on this map, and reserves the right to correct, update, modify, or replace this information without notification.

- Sheet 2 of 10
- FS Proposed Admin Site Designation
  - Alaska Mental Health Trust Authority To Be Exchanged
  - Surface Ownership**
  - State of Alaska
  - National Forest System Lands
  - Non - National Forest System Lands



Map Creation Date - 09-19-2016  
Map Revision Date - 03-03-2017

**Alaska Mental Health Trust Act of 2017**

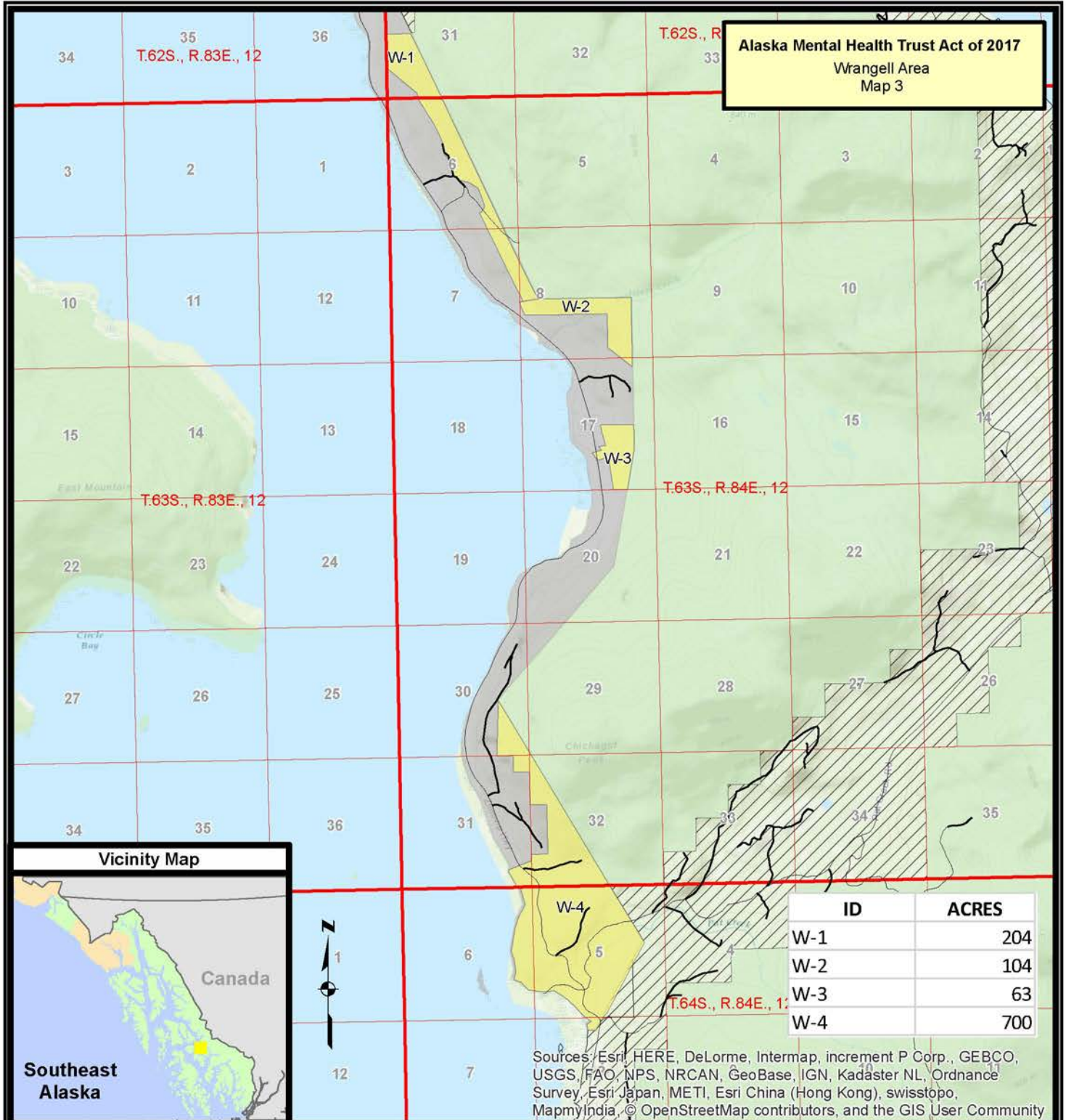
Legislative Map Bill Numbers: S131 & HR513

Petersburg Area  
3871 Approximate Acres

U.S. Forest Service - Alaska Region  
Tongass National Forest  
Alaska At-Large U.S. Congressional District

Copies of this map are available for public inspection in the Office of the Regional Forester, R10, Juneau, Alaska.

**Alaska Mental Health Trust Act of 2017**  
Wrangell Area  
Map 3



ID	ACRES
W-1	204
W-2	104
W-3	63
W-4	700

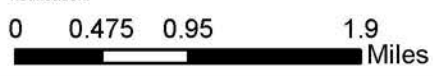
Sources: Esri, HERE, DeLorme, Intermap, increment P Corp., GEBCO, USGS, FAO, NPS, NRCAN, GeoBase, IGN, Kadaster NL, Ordnance Survey, Esri Japan, METI, Esri China (Hong Kong), swisstopo, MapmyIndia, © OpenStreetMap contributors, and the GIS User Community



**References**  
Data acquired from a variety of sources of differing accuracy, precision and reliability. Features represented by the data may not represent accurate geographic locations.

**Disclaimer**  
The USDA Forest Service makes no warranty, expressed or implied regarding the data displayed on this map, and reserves the right to correct, update, modify, or replace this information without notification.

- Sheet 3 of 10
- Alaska Mental Health Trust Authority To Be Exchanged
  - Surface Ownership**
  - State of Alaska
  - National Forest System Lands
  - Non - National Forest System Lands



Map Creation Date - 09-19-2016  
Map Revision Date - 03-03-2017

**Alaska Mental Health Trust Act of 2017**

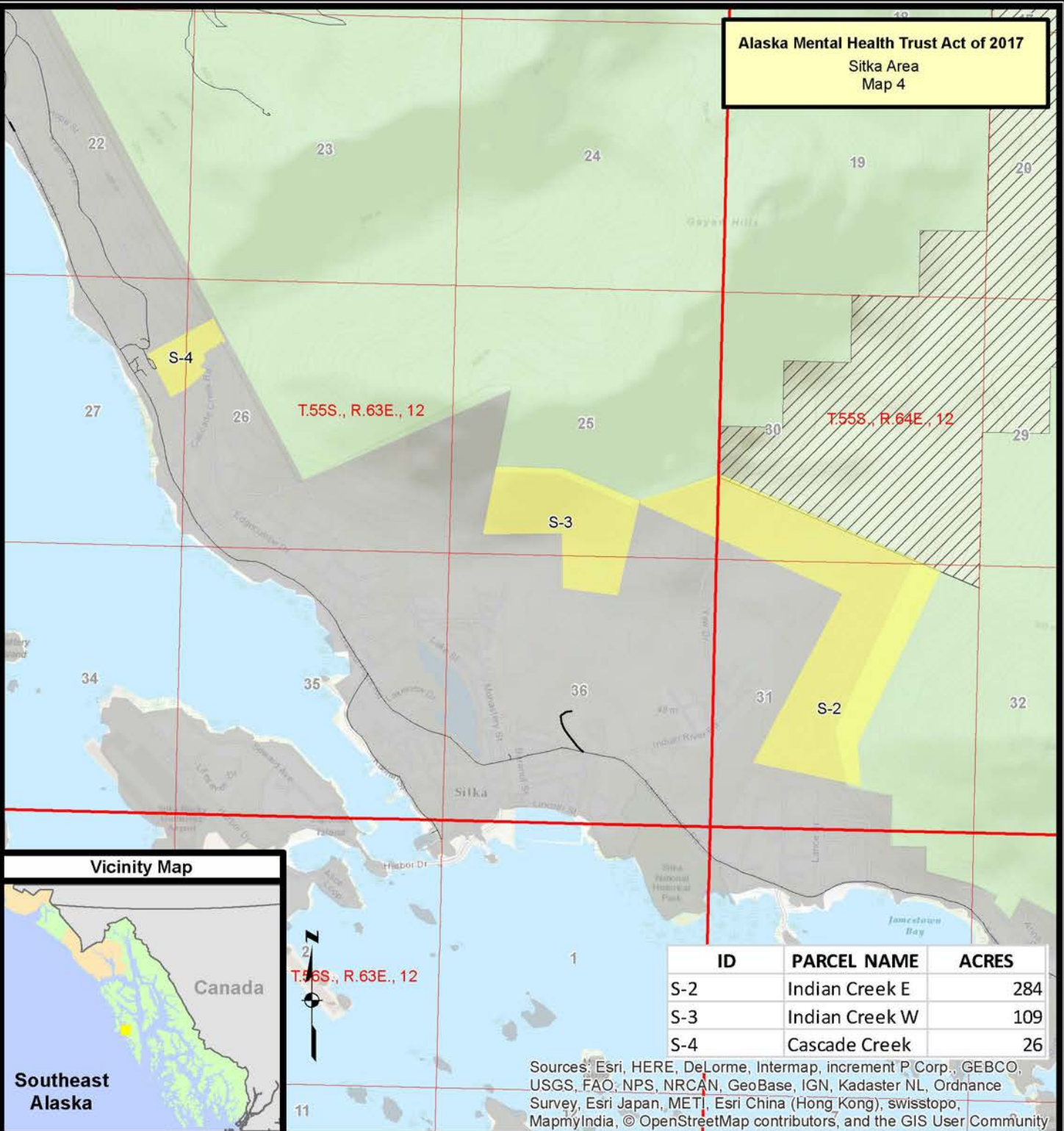
Legislative Map Bill Numbers: S131 & HR513

Wrangell Area  
1071 Approximate Acres

U.S. Forest Service - Alaska Region  
Tongass National Forest  
Alaska At-Large U.S. Congressional District

Copies of this map are available for public inspection in the Office of the Regional Forester, R10, Juneau, Alaska.

**Alaska Mental Health Trust Act of 2017**  
Sitka Area  
Map 4



ID	PARCEL NAME	ACRES
S-2	Indian Creek E	284
S-3	Indian Creek W	109
S-4	Cascade Creek	26

Sources: Esri, HERE, DeLorme, Intermap, increment P Corp., GEBCO, USGS, FAO, NPS, NRCAN, GeoBase, IGN, Kadaster NL, Ordnance Survey, Esri Japan, METI, Esri China (Hong Kong), swisstopo, MapmyIndia, © OpenStreetMap contributors, and the GIS User Community

Sheet 4 of 10

**References**

Data acquired from a variety of sources of differing accuracy, precision and reliability. Features represented by the data may not represent accurate geographic locations.

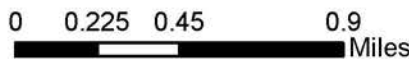
**Disclaimer**

The USDA Forest Service makes no warranty, expressed or implied regarding the data displayed on this map, and reserves the right to correct, update, modify, or replace this information without notification.

Alaska Mental Health Trust Authority To Be Exchanged

**Surface Ownership**

- State of Alaska
- National Forest System Lands
- Non - National Forest System Lands



Map Creation Date - 02-14-2017  
Map Revision Date - 03-03-2017

**Alaska Mental Health Trust Act of 2017**

Legislative Map Bill Numbers: S131 & HR513

Sitka Area  
419 Approximate Acres

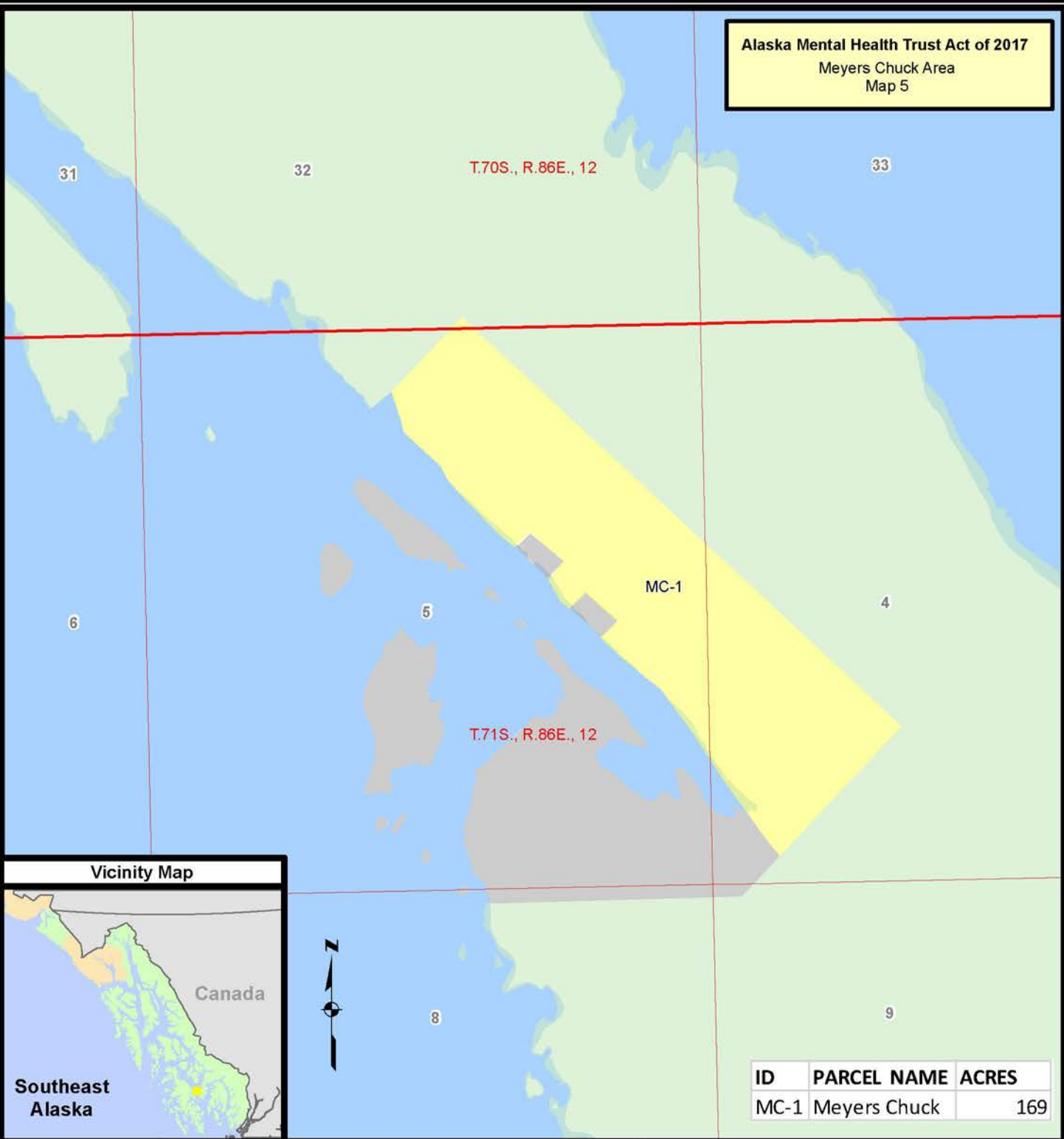


U.S. Forest Service - Alaska Region  
Tongass National Forest  
Alaska At-Large U.S. Congressional District



Copies of this map are available for public inspection in the Office of the Regional Forester, R10, Juneau, Alaska.

**Alaska Mental Health Trust Act of 2017**  
 Meyers Chuck Area  
 Map 5



ID	PARCEL NAME	ACRES
MC-1	Meyers Chuck	169



Sheet 5 of 10

**References**

Data acquired from a variety of sources of differing accuracy, precision and reliability. Features represented by the data may not represent accurate geographic locations.

**Disclaimer**

The USDA Forest Service makes no warranty, expressed or implied regarding the data displayed on this map, and reserves the right to correct, update, modify, or replace this information without notification.

- Alaska Mental Health Trust Authority To Be Exchanged
- Surface Ownership**
- National Forest System Lands
- Non - National Forest System Lands



Map Creation Date - 09-19-2016  
 Map Revision Date - 03-03-2017

**Alaska Mental Health Trust Act of 2017**

Legislative Map Bill Numbers: S131 & HR513

Meyers Chuck Area  
 169 Approximate Acres

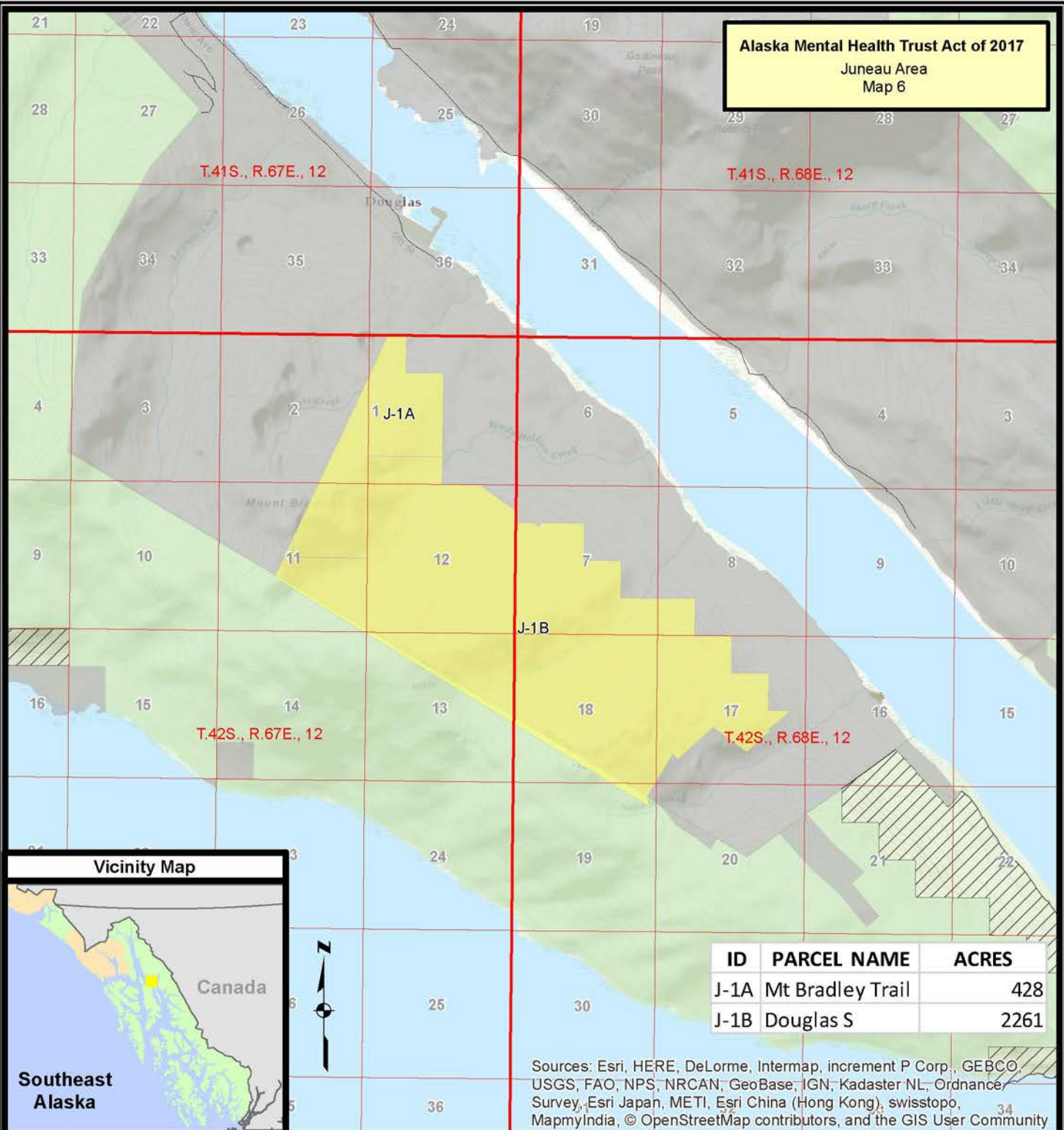


U.S. Forest Service - Alaska Region  
 Tongass National Forest  
 Alaska At-Large U.S. Congressional District



Copies of this map are available for public inspection in the Office of the Regional Forester, R10, Juneau, Alaska.

**Alaska Mental Health Trust Act of 2017**  
Juneau Area  
Map 6



ID	PARCEL NAME	ACRES
J-1A	Mt Bradley Trail	428
J-1B	Douglas S	2261

Sources: Esri, HERE, DeLorme, Intermap, increment P Corp., GEBCO, USGS, FAO, NPS, NRCAN, GeoBase, IGN, Kadaster NL, Ordnance Survey, Esri Japan, METI, Esri China (Hong Kong), swisstopo, MapmyIndia, © OpenStreetMap contributors, and the GIS User Community



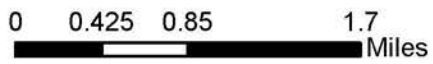
**References**

Data acquired from a variety of sources of differing accuracy, precision and reliability. Features represented by the data may not represent accurate geographic locations.

**Disclaimer**

The USDA Forest Service makes no warranty, expressed or implied regarding the data displayed on this map, and reserves the right to correct, update, modify, or replace this information without notification.

- Alaska Mental Health Trust Authority To Be Exchanged
- Surface Ownership**
- State of Alaska
- National Forest System Lands
- Non - National Forest System Lands



Map Creation Date - 09-19-2016  
Map Revision Date - 03-03-2017

Sheet 6 of 10

**Alaska Mental Health Trust Act of 2017**

Legislative Map Bill Numbers: S131 & HR513

Juneau Area  
2689 Approximate Acres



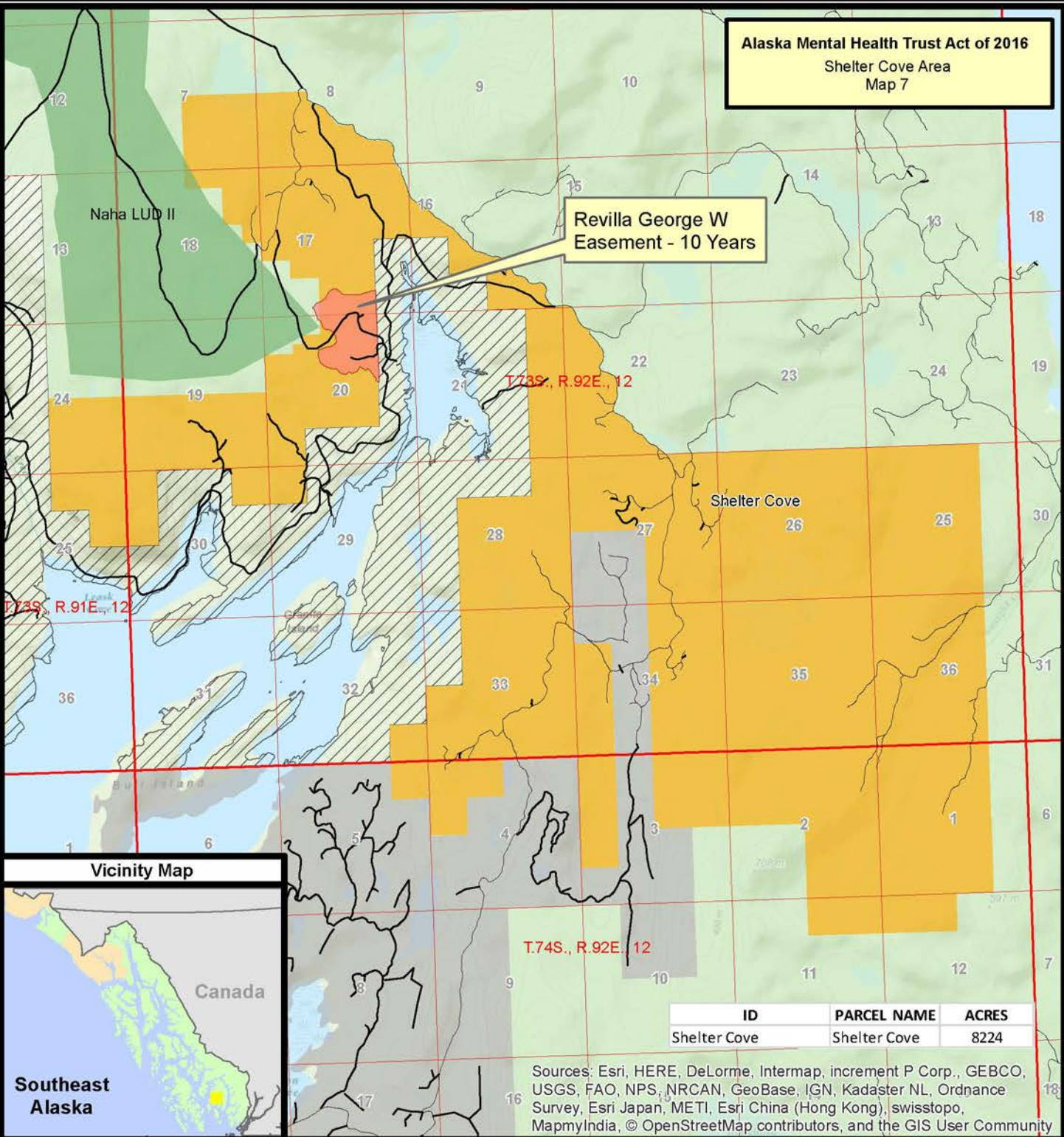
U.S. Forest Service - Alaska Region  
Tongass National Forest  
Alaska At-Large U.S. Congressional District



Copies of this map are available for public inspection in the Office of the Regional Forester, R10, Juneau, Alaska.

**Alaska Mental Health Trust Act of 2016**  
Shelter Cove Area  
Map 7

Revilla George W  
Easement - 10 Years



ID	PARCEL NAME	ACRES
Shelter Cove	Shelter Cove	8224

Sources: Esri, HERE, DeLorme, Intermap, increment P Corp., GEBCO, USGS, FAO, NPS, NRCAN, GeoBase, IGN, Kadaster NL, Ordnance Survey, Esri Japan, METI, Esri China (Hong Kong), swisstopo, MapmyIndia, © OpenStreetMap contributors, and the GIS User Community

Sheet 7 of 10

**References**

Data acquired from a variety of sources of differing accuracy, precision and reliability. Features represented by the data may not represent accurate geographic locations.

**Disclaimer**

The USDA Forest Service makes no warranty, expressed or implied regarding the data displayed on this map, and reserves the right to correct, update, modify, or replace this information without notification.



- FSL Research Sites
- Naha LUDII
- USFS to Exchange
- Surface Ownership**
- State of Alaska
- National Forest System Lands
- Non - National Forest System Lands



Map Creation Date - 09-19-2016  
Map Revision Date - 03-03-2017

**Alaska Mental Health Trust Act of 2016**

Legislative Map Bill Numbers: S131 & HR513

Shelter Cove Area  
8224 Approximate Acres

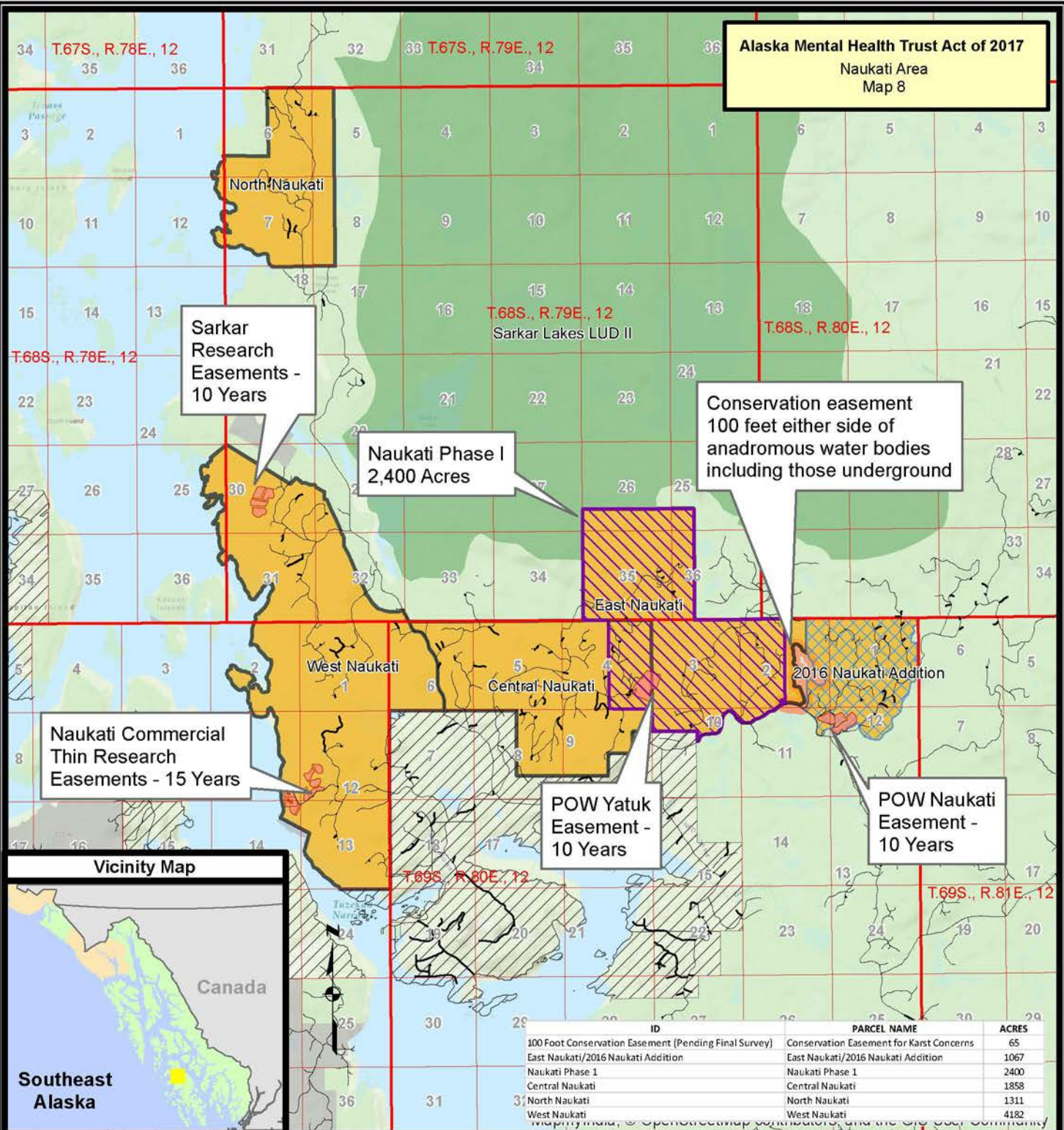


U.S. Forest Service - Alaska Region  
Tongass National Forest  
Alaska At-Large U.S. Congressional District



Copies of this map are available for public inspection in the Office of the Regional Forester, R10, Juneau, Alaska.

**Alaska Mental Health Trust Act of 2017**  
Naukati Area  
Map 8



ID	PARCEL NAME	ACRES
100 Foot Conservation Easement (Pending Final Survey)	Conservation Easement for Karst Concerns	65
East Naukati/2016 Naukati Addition	East Naukati/2016 Naukati Addition	1067
Naukati Phase 1	Naukati Phase 1	2400
Central Naukati	Central Naukati	1858
North Naukati	North Naukati	1311
West Naukati	West Naukati	4182

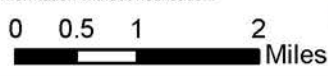
**References**

Data acquired from a variety of sources of differing accuracy, precision and reliability. Features represented by the data may not represent accurate geographic locations.

**Disclaimer**

The USDA Forest Service makes no warranty, expressed or implied regarding the data displayed on this map, and reserves the right to correct, update, modify, or replace this information without notification.

- Naukati Phase I
- Sarkar Lakes LUDII
- FSL Research Sites
- 2016 Naukati Addition
- USFS To Exchange
- 200ft Wide Underground Stream Conservation Easement
- Surface Ownership**
- State of Alaska
- National Forest System Lands
- Non - National Forest System Lands



Map Creation Date - 11-28-2016  
Map Revision Date - 03-03-2017

Sheet 8 of 10

**Alaska Mental Health Trust Act of 2017**

Legislative Map Bill Numbers: S131 & HR513

Naukati Area  
10883 Approximate Acres



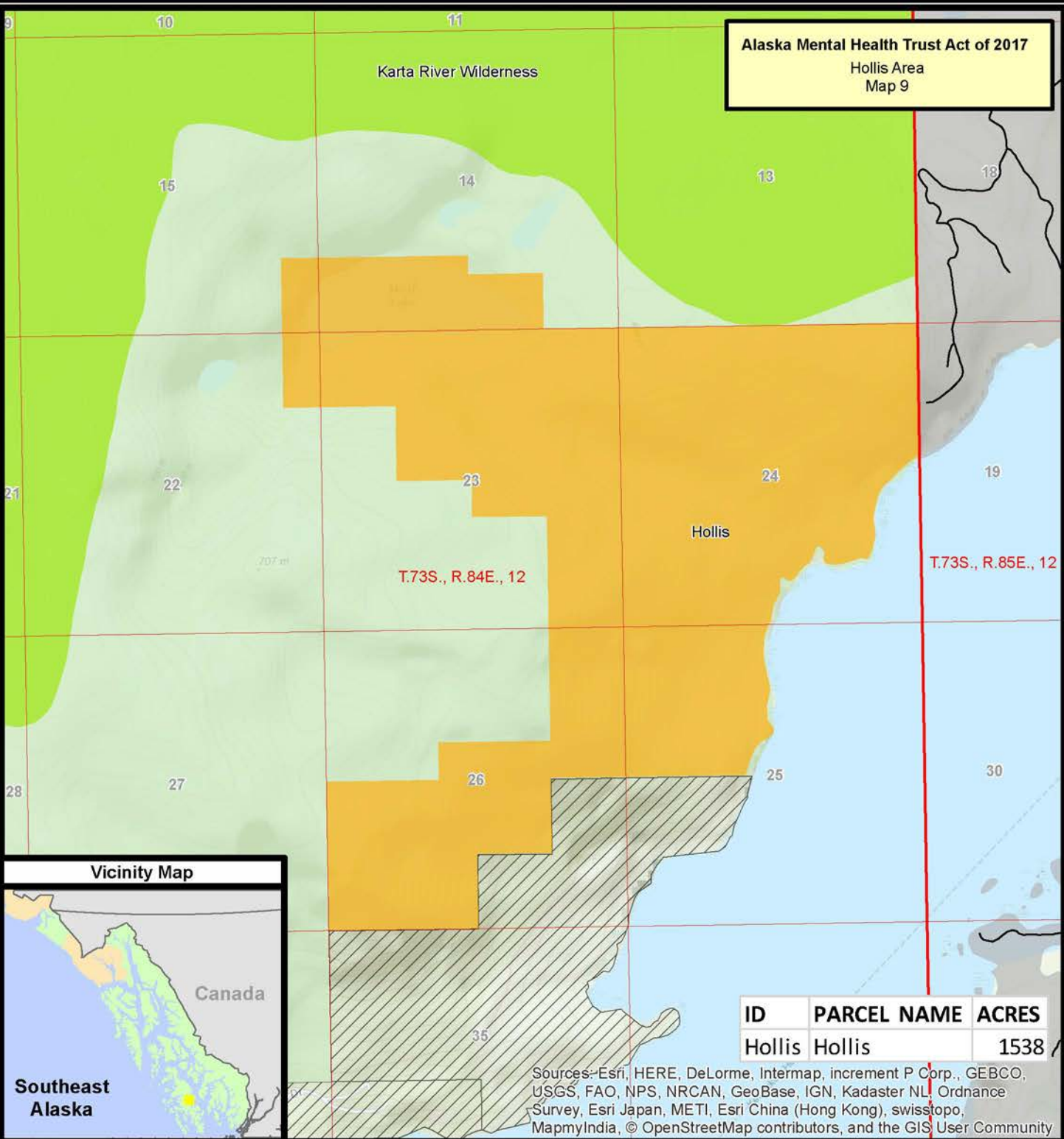
U.S. Forest Service - Alaska Region  
Tongass National Forest  
Alaska At-Large U.S. Congressional District



Copies of this map are available for public inspection in the Office of the Regional Forester, R10, Juneau, Alaska.



**Alaska Mental Health Trust Act of 2017**  
Hollis Area  
Map 9



ID	PARCEL NAME	ACRES
Hollis	Hollis	1538



Sources: Esri, HERE, DeLorme, Intermap, increment P Corp., GEBCO, USGS, FAO, NPS, NRCAN, GeoBase, IGN, Kadaster NL, Ordnance Survey, Esri Japan, METI, Esri China (Hong Kong), swisstopo, MapmyIndia, © OpenStreetMap contributors, and the GIS User Community

**References**

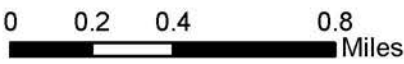
Data acquired from a variety of sources of differing accuracy, precision and reliability. Features represented by the data may not represent accurate geographic locations.

**Disclaimer**

The USDA Forest Service makes no warranty, expressed or implied regarding the data displayed on this map, and reserves the right to correct, update, modify, or replace this information without notification.



- Karta River Wilderness
- USFS to Exchange
- Surface Ownership**
- State of Alaska
- National Forest System Lands
- Non - National Forest System Lands



Map Creation Date - 09-19-2016  
Map Revision Date - 03-03-2017

Sheet 9 of 10

**Alaska Mental Health Trust Act of 2017**

Legislative Map Bill Numbers: S131 & HR513

Hollis Area  
1538 Approximate Acres

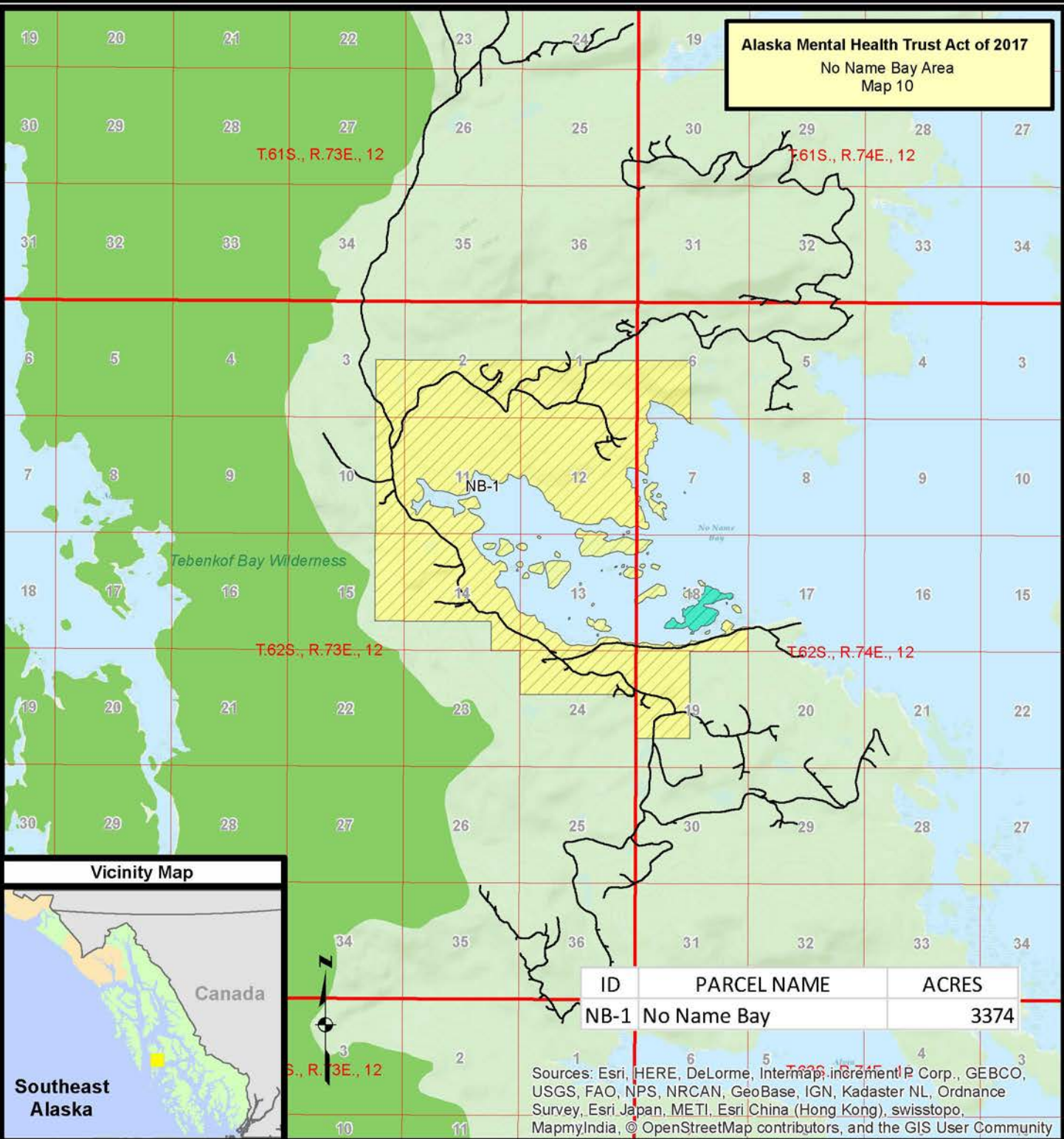


U.S. Forest Service - Alaska Region  
Tongass National Forest  
Alaska At-Large U.S. Congressional District



Copies of this map are available for public inspection in the Office of the Regional Forester, R10, Juneau, Alaska.

**Alaska Mental Health Trust Act of 2017**  
**No Name Bay Area**  
**Map 10**



ID	PARCEL NAME	ACRES
NB-1	No Name Bay	3374

Sources: Esri, HERE, DeLorme, Intermap, increment P Corp., GEBCO, USGS, FAO, NPS, NRCAN, GeoBase, IGN, Kadaster NL, Ordnance Survey, Esri Japan, METI, Esri China (Hong Kong), swisstopo, MapmyIndia, © OpenStreetMap contributors, and the GIS User Community

**References**

Data acquired from a variety of sources of differing accuracy, precision and reliability. Features represented by the data may not represent accurate geographic locations.

**Disclaimer**

The USDA Forest Service makes no warranty, expressed or implied regarding the data displayed on this map, and reserves the right to correct, update, modify, or replace this information without notification.

- Alaska Mental Health Retain
- Alaska Mental Health Trust Authority to be Exchanged
- Wilderness
- Surface Ownership**
- State of Alaska
- National Forest System Lands
- Non - National Forest System Lands



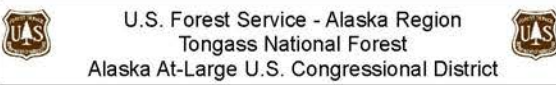
Map Creation Date - 02-14-2017  
 Map Revision Date - 03-09-2017

Sheet 10 of 10

**Alaska Mental Health Trust Act of 2017**

Legislative Map Bill Numbers: S131 & HR513

No Name Bay Area  
 3374 Approximate Acres



Copies of this map are available for public inspection in the Office of the Regional Forester, R10, Juneau, Alaska.