



Yakutat Community Update: Trust Land Activities

Virtual

April 13, 2021
5:30-7PM

Virtual Meeting

- Please mute your microphone
- Please hold questions to the end of the presentation, there will be a question & answer period
- Slides also available at alaskamentalthhealthtrust.org/icyscape

The Team

- **Wyn Menefee:** Executive Director, Trust Land Office
- **Jusdi Doucet:** Deputy Director, Trust Land Office
- **Karsten Eden:** Minerals & Energy Section Chief, Trust Land Office
- **Allison Biastock:** Trust Chief Communications Officer
- **Steve Williams:** Trust Chief Operations Officer

Trust

Alaska Mental Health Trust Authority

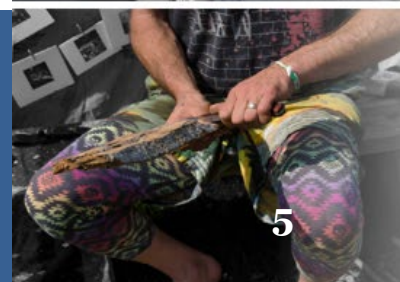
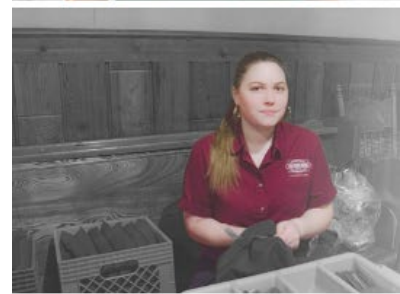
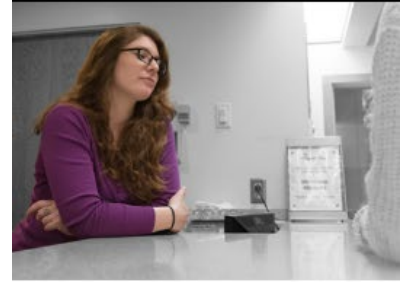
It is the duty of the Alaska Mental Health Trust Authority to provide leadership in the advocacy, planning, implementing and funding of services and programs for Trust beneficiaries.

Trust Beneficiaries

Beneficiaries include Alaskans who experience:

- Mental illnesses
- Intellectual and developmental disabilities
- Alzheimer's disease and related dementias
- Traumatic brain injuries
- Substance use disorders

The Trust also works in prevention and early intervention services for individuals at risk of becoming beneficiaries.



The Work of the Trust

Advocating for and providing grants to programs and initiatives that serve Alaska's most vulnerable populations.

- Disability Justice
- Housing & Home and Community-Based Services
- Employment & Engagement
- Mental Health & Addiction Interventions
- Workforce Development
- Early childhood Intervention and Prevention

Grant Making

Trustees authorize around **\$25 million** in grants each year to nonprofits, service providers, state and local governments, and Tribal organizations.

Recent grants in Yakutat:

- \$35,000 to the Yakutat Tlingit Tribe for the Yakutat Tlingit Tribe Domestic Violence and Sexual Assault Shelter
- An \$8,000 COVID-19 response grant to the City and Borough of Yakutat for PPE
- \$50,000 to the Yakutat Tribal Health Board to support behavioral health at the Yakutat Community Health Center



The Trust Land Office (TLO)

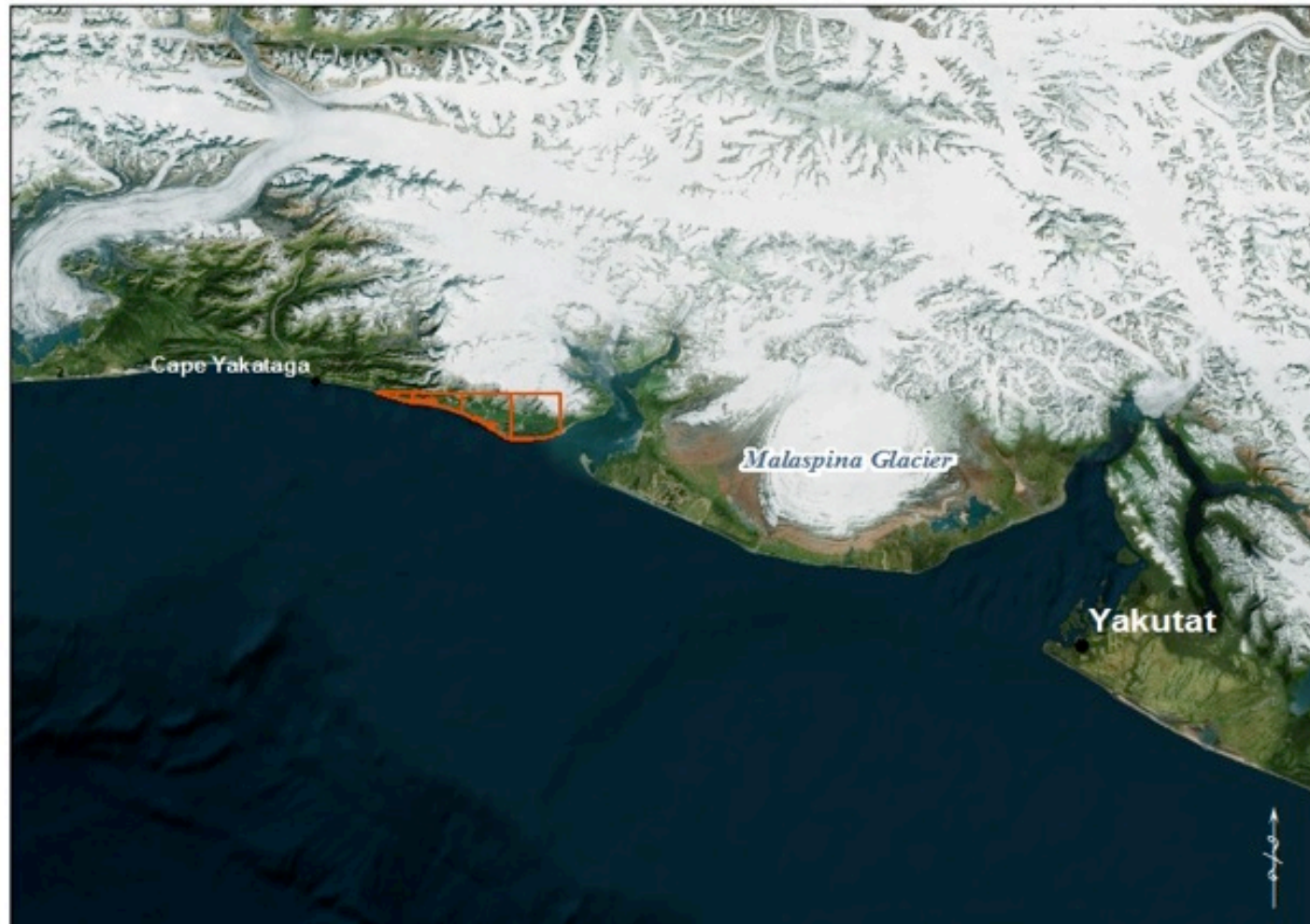
Manages Trust owned land and resources to generate revenue used by the Trust to improve the lives of the beneficiaries

The TLO protects & enhances the value of Alaska Mental Health Trust lands


Trust Land Management Principles

- Maximize long-term revenue & productivity from Trust land
- Protect corpus
- Encourage diverse revenue-producing uses of Trust land
- Manage Trust land prudently, efficiently & with accountability to the Trust & its beneficiaries

Icy Cape



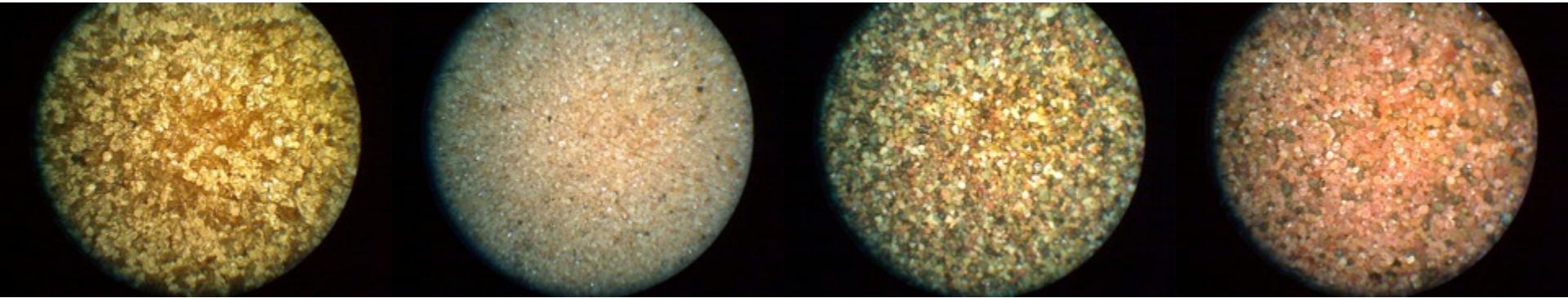
Mental Health
Trust Land
Near
Malaspina Glacier

 Mental Health
Trust Land



Icy Cape Project

The Icy Cape land block contains...



Gold

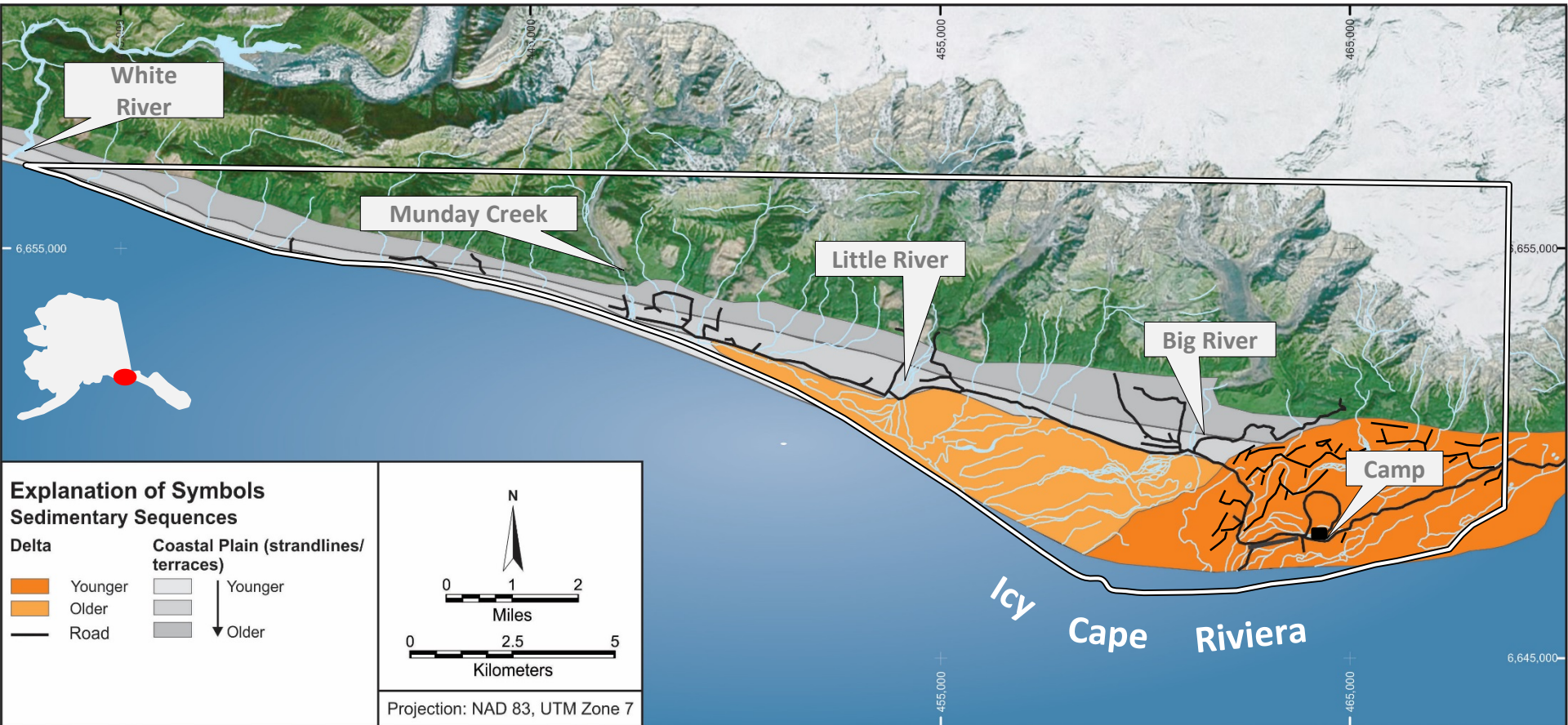
Zircon

Epidote

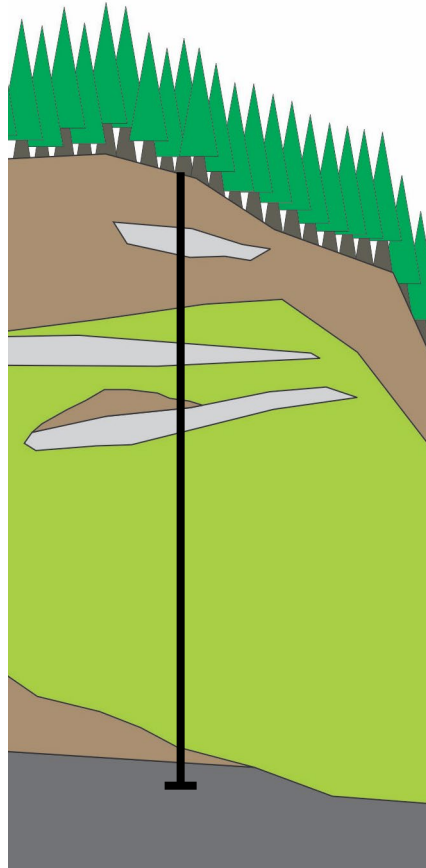
Garnet

- Significant prospects of gold & industrial heavy minerals.

Setting



Sediments



Unit A: cobbly sands with interbedded beach sands, contains gold and industrial heavy minerals



Diamicton (silt), contains gold)



Unit B: fine sands, contains gold and industrial heavy minerals



**Sand/siltstone
Yakataga Formation**

2015

- 3 people for 3 days
- Technical literature & archive documents & samples analyzed.
- Geological & mineral-resource maps compiled.



2016

- 6 people for 2 1/2 weeks
- 100 samples collected for analyses.
- Aeromagnetic survey conducted.



2017

- 16 people in camp, not including short-term visits
- Exploration team of placer gold and industrial heavy mineral sands experts
- Conducted stratigraphic framework drilling in eastern part of the property (7,000ft).



2018

- 23 people in camp, not including short-term visits
- Built sample processing facility
- Exploration team of placer gold and industrial heavy mineral sands experts
- Conducted stratigraphic framework drilling in western part of the property (6,000ft).



2019

- 6 people in camp, not including short-term visits
- Collected bulk sediment samples along new logging roads and stream sediment samples
- Analyses are consistent with large-volume gold and industrial placer mineral resource models.



2020

- Delineated Au and HM prospects
- Grade/tonnage models
- Au + HM resource estimates for selected prospects
- Independent Project review and development option scenario analysis by HATCH, a leading international consulting firm specializing in the mining industry
- Analyses are consistent with large-volume gold and industrial placer mineral resource models

What's Next?

- Board of Trustees approved \$10M for additional exploration work towards indicated resources and a pre-feasibility study
- High resolution airborne gradient magnetic survey
- Infrastructure improvements including drill access trails and camp upgrades
- Sample processing facility and onsite laboratory
- Preparation for resource definition drilling in 2022
- Anticipate 24 people in camp in the summer of 2022



Environmental Impact

- Acquiring all required permits
- Following all pertinent state & federal regulations
- Maintaining long-term stewardship



Economic Opportunity

- Jobs/internship
- Air service
- Supplies
- Room & board



Icy Bay Timber Harvest

Image: Icy Bay West, Timber Camp

The camp was pulled out last year, but the TLO maintains a presence



Icy Bay Timber Harvest

- The trees being harvested were about 100 years old.
- Trees start to become merchantable at about 60 years of age
- Harvests could begin again as early as 2030



Icy Bay Timber Harvest Employment

- The timber crew in 2019 was between 25 and 35
- About 30 people from Yakutat work as Stevedores to load each ship.
- Only two ships in 2019 and one in 2020 due to market conditions (the 20% tariff on China Spruce)
- Each Ship provides an estimated to be \$80,000* in payroll to Yakutat

* SE Stevedoring

Yakutat Crew Loading the Ship



- There was about 28 mmbf harvested by Sealaska at Icy Bay under this contract
- The contract was closed fall of 2020

Yakutat Timber Sale by Yak Timber

The TLO worked with Yak Timber to harvest wood that will also benefit future subdivision sales



Yakutat Harvest

2020 was an extremely wet year, which added challenges.

Project and roads to be completed by Yak Timber in May 2021.



Yakutat Alaska Subdivision

- Starting fall 2021 TLO plans to offer lots in the Yakutat Alaska Subdivision on the east side of Airport Road
- Accessible via Glacier Bear Ave.
- Subdivision ROW has been cleared (approx. 60') and roads have been constructed



- Anticipate offering 29 lots, average lot size is 2 acres
- Well drained, gravel/cobble substrate
- Power in vicinity, but no utilities to the lots
- Lots have not been cleared, there is second growth timber in the area
- Six parcels have been sold in the past three years

Yakutat-Arial Survey



Big Game Guide Permit Program

One exclusive commercial guiding permit per large land tract – Guiding Concession

- 5 large land tracts – Icy Bay, Tyonek, Healy, Lake Minchumina, and Ophir
 - Healy, Lake Minchumina, and Ophir currently available
- Five-year permit with a potential five-year renewal
- Permittee allowed motorized use, access, and temporary camps
- Program launched in 2020
- Evaluating <5,000 acre land tracts for annual non-exclusive permitting

www.alaskamentalhealthtrust.org/trust-land-office/land-sales/biggameguidepermits/

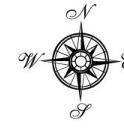


Trust
Land Office

Alaska Mental Health Trust Land and Airstrip at Icy Bay - MHT 9100992

All land within Township 22 South, Ranges 19 - 22 East and 23 South, Ranges 21 - 22 East, Copper River Meridian.
Total Acreage: Approximately 50,000 acres. Game Management Unit 6A, Guide Use Area 6-01.

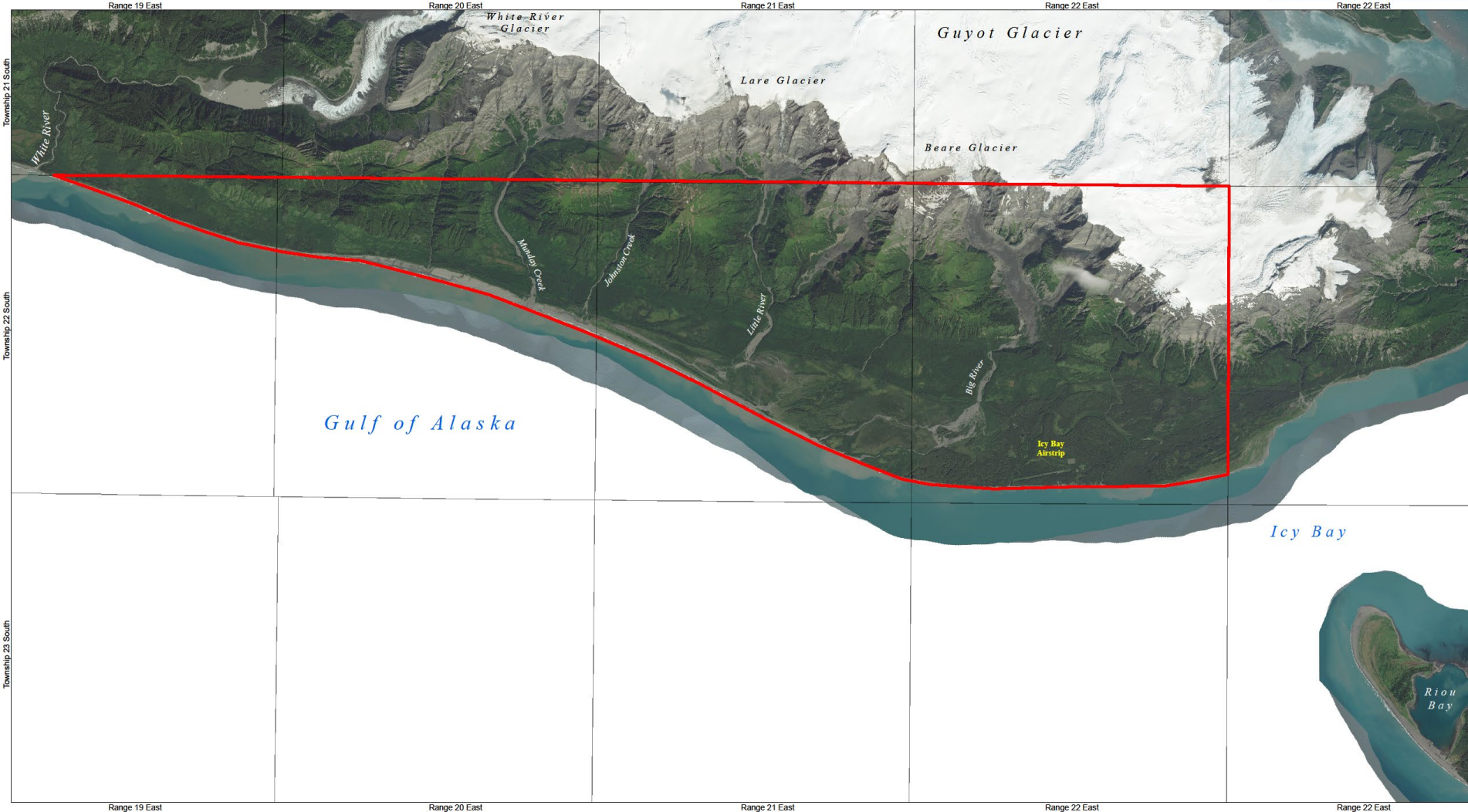
GIS Standard Map Disclaimer: This product is for informational purposes and may not have been prepared for, or be suitable for legal, engineering, or surveying purposes. Users of this information should review or consult the primary data and information sources to ascertain the usability of the information.



0 0.5 1 2 3 4 5 6 Miles



 Mental Health Parcel



Thank You

Question and Answer

- During Q&A questions may be asked via your microphone, or via the chat function
- Please reserve the chat function for questions
- Please only unmute when speaking
- Please limit your question or comment to two minutes or less
- Please ensure all attendees have an opportunity to ask a question